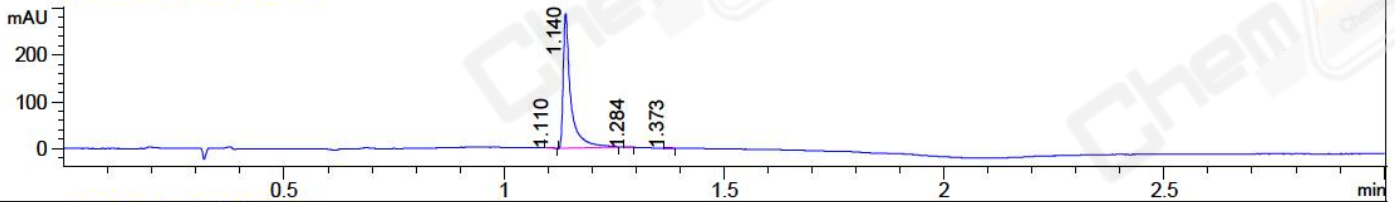
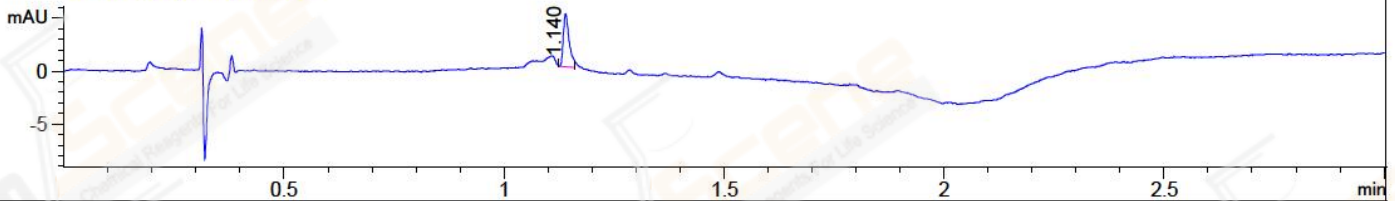


File ..EM32\1\DATA\20180613\266\BIZ2018-613-WYQ5.D Tgt Mass (CHM):
 Injection Date : 13 Jun 18 7:06 pm +0800 Seq. Line : 20
 Sample Name : BIZ2018-613-WYQ5 Location : P2-B-07
 Acq. Operator : LQ_1052 Inj : 1
 Spec. Reported : MS Integration Inj Volume : 1 ul
 Acq. Method : D:\chem32\1\DATA\20180613\266\1-POS-3MIN-1(110-1500).M
 Analysis Method : D:\CHEM32\1\DATA\20180613\266\1-POS-3MIN-1(110-1500).M
 Catalog No : CS-0578 Batch#30954 A-RP-314
 Method Info : Mobile Phase: A: water(0.01%TFA) B:ACN(0.01%TFA)
 Gradient: 5% to 95%B within 1.3 min
 Flow Rate :1.8ml/min
 Column :SunFire C18, 4.6*50mm,3.5um A-RP-186
 Oven Temperature : 45C

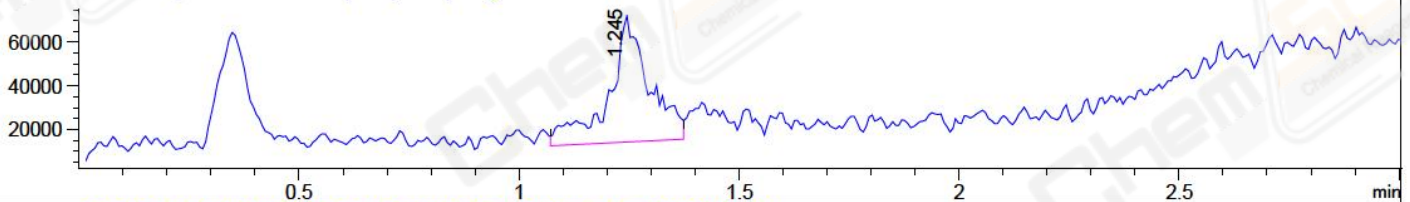
DAD1 B, Sig=214,4 Ref=off



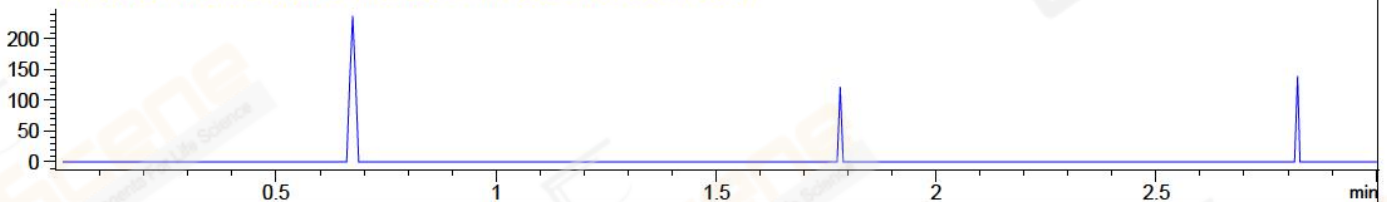
DAD1 C, Sig=254,4 Ref=off



MSD1 TIC, MS File ES-API, Pos, Scan, Frag: 70



Ion 1213.6, MSD1 1213.6, Target Mass 1212.6 +H Positive, EIC=1213.3:1214.3



Integration Results for DAD1 B, Sig=214,4 Ref=off

RetTim	Width	Area	Height	Area%	MS (+)
1.11	0.01	0.78	1.00	0.22	128
1.14	0.02	346.33	288.78	99.48	547
1.28	0.01	0.53	0.89	0.15	547
1.37	0.01	0.50	0.66	0.14	547

Integration Results for DAD1 C, Sig=254,4 Ref=off

RetTim	Width	Area	Height	Area%	MS (+)
1.14	0.01	4.64	5.03	100.00	128

Integration Results for MSD1 TIC, MS File

RetTim	Width	Area	Height	Area%	MS (+)
1.24	0.08	368073.25	58213.52	100.00	547

Ret. Time: 1.24

<<<< POSITIVE SPECTRA >>>>

