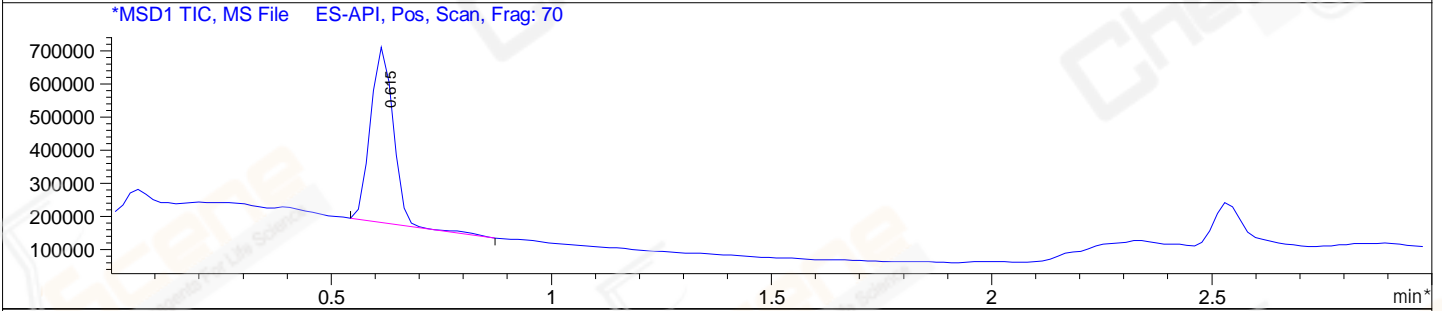
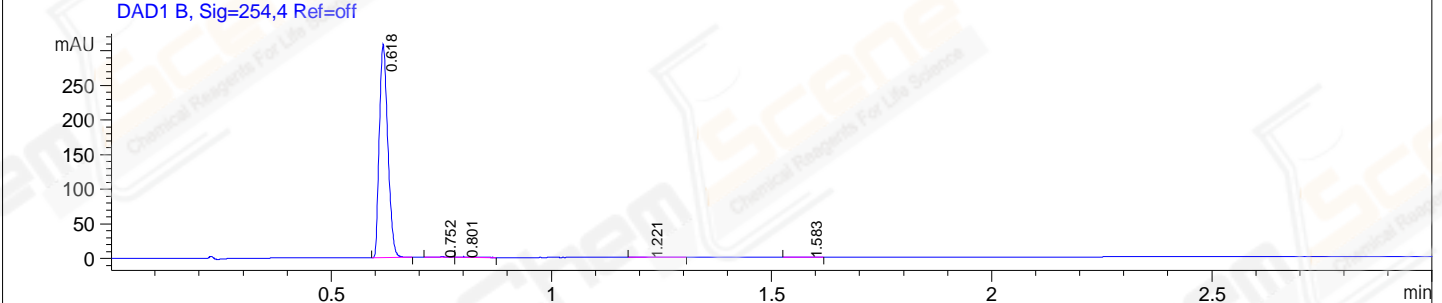
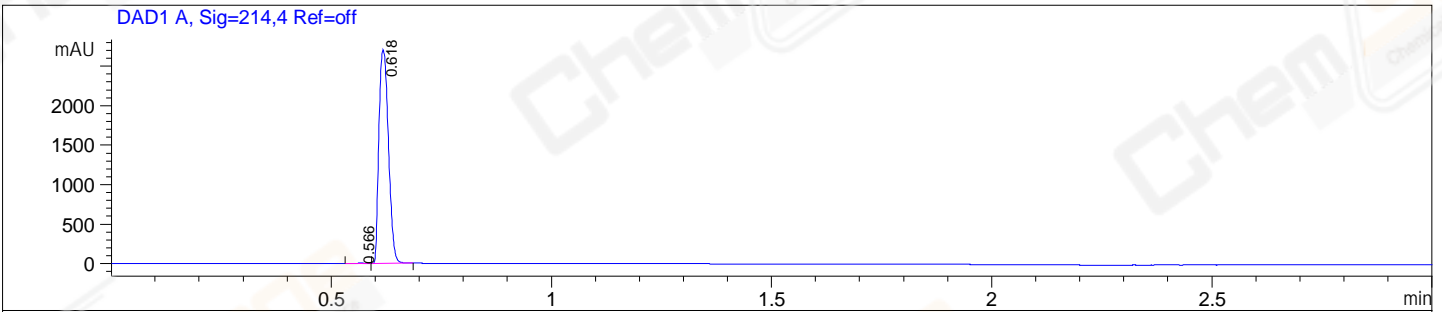


File E:\ChemStation\1\DATA\2023\2023-11\2023-11-03\BIZ2023-N03-SCH3-UPLC-MS-10-018670.D
 Injection Date : 03-Nov-23, 18:57:36 Tgt Mass(EZX) :
 Sample Name : BIZ2023-N03-SCH3 Location : P2-C-09
 Acq. Operator : LY_2278 Inj : 1
 Spec. Reported : MS Integration Inj Volume : 0.8 ul
 Acq. Method : E:\ChemStation\1\Methods\1-POS-UPLC3.0MIN(1.2)(150-1000).M
 Analysis Method : E:\CHEMSTATION\1\METHODS\1-POS-UPLC3.0MIN(1.2)(150-1000).M
 CAS NO. : 153-91-3 WalkUp method: '1-POS-3MIN' Project: BIZ2023
 Method Info : Mobile Phase: A: water(0.01%TFA) B:ACN(0.01%TFA)
 Gradient: 5% to 95%B within 2.0 min
 Flow Rate :1.2ml/min
 Column :Shim-pack Scepter C18-120, 3.0*33mm,3um
 Oven Temperature : 45C



Integration Results for DAD1 A, Sig=214,4 Ref=off

RetTim	Width	Area	Height	Area%
0.57	0.02	3.25	2.66	0.08
0.62	0.02	4058.34	2702.17	99.92

Integration Results for DAD1 B, Sig=254,4 Ref=off

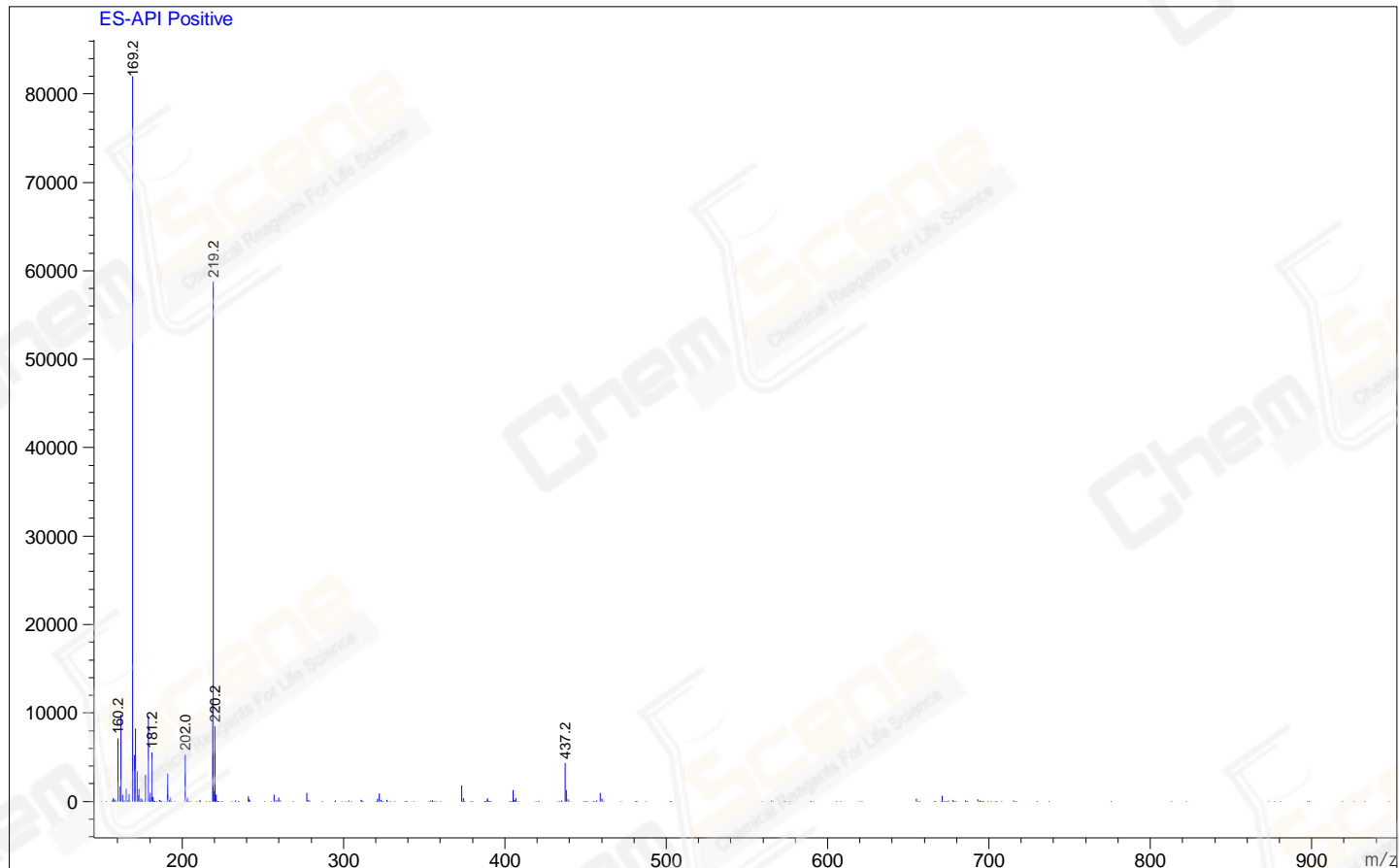
RetTim	Width	Area	Height	Area%
0.62	0.02	413.48	307.70	98.96
0.75	0.03	1.58	0.73	0.38
0.80	0.02	1.10	0.74	0.26
1.22	0.03	1.11	0.54	0.27
1.58	0.03	0.55	0.33	0.13

Integration Results for MSD1 TIC, MS File

RetTim	Width	Area	Height	Area%
0.61	0.06	1915206.13	527925.06	100.00

Ret. Time: 0.61

<<<< POSITIVE SPECTRA >>>>



*** End of Report ***