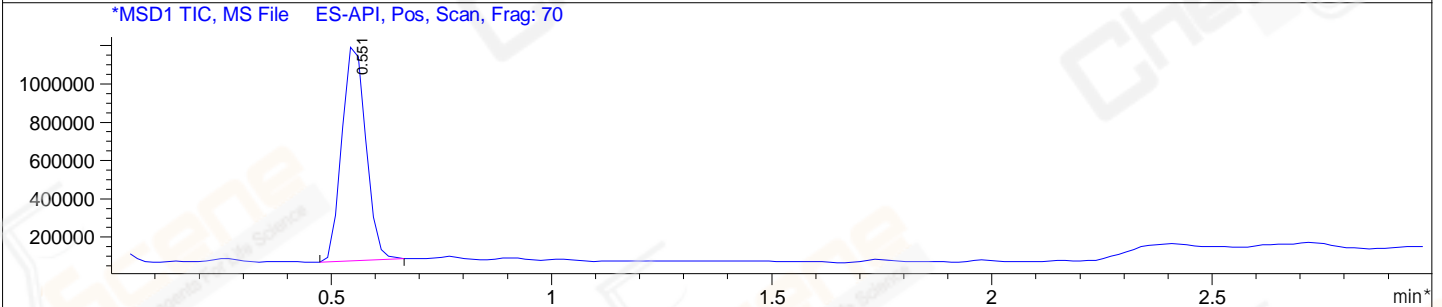
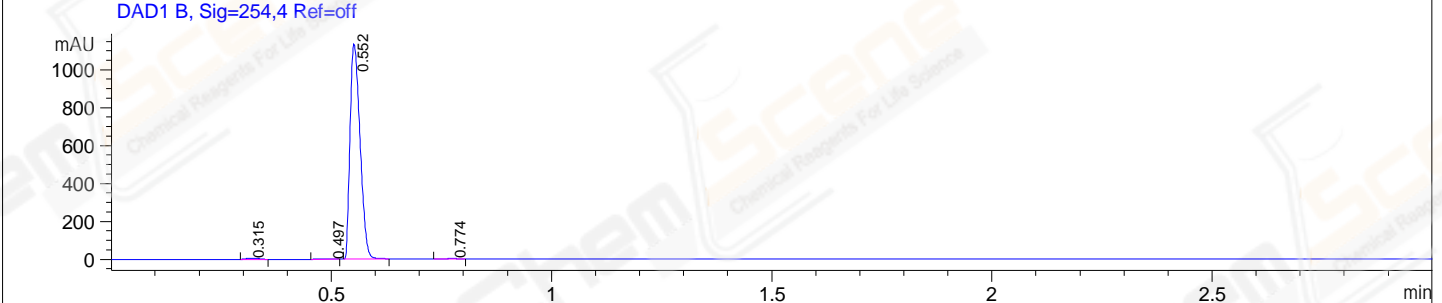
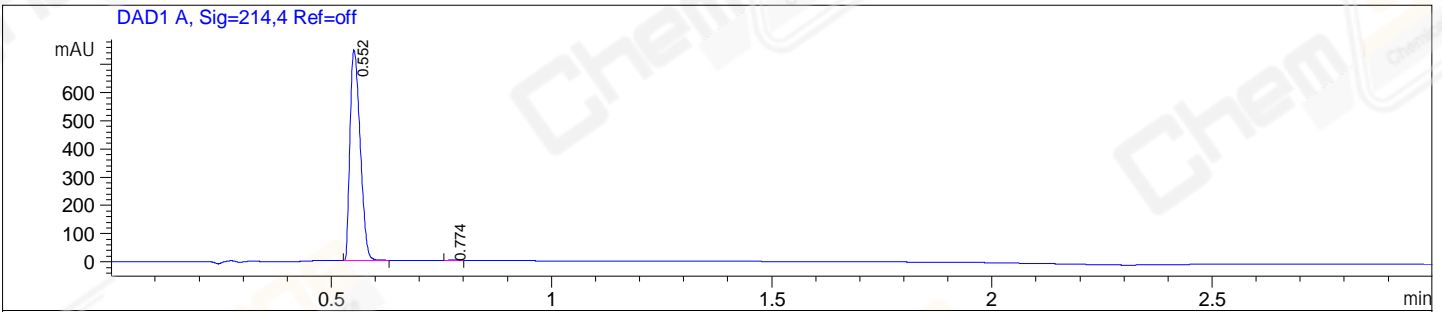


File E:\ChemStation\1\DATA\2023\2023-09\2023-09-06\CPK2023-906-31059-UPLC-MS-10-013756.D
 Injection Date : 06-Sep-23, 18:14:43 Tgt Mass(EZX) :
 Sample Name : CPK2023-906-31059 Location : P1-F-06
 Acq. Operator : LY_2278 Inj : 1
 Spec. Reported : MS Integration Inj Volume : 0.8 ul
 Acq. Method : E:\ChemStation\1\Methods\1-POS-UPLC3.0MIN(1.2)(150-1000).M
 Analysis Method : E:\CHEMSTATION\1\METHODS\1-POS-UPLC3.0MIN(1.2)(150-1000).M
 CAS NO. : 129830-38-2 WalkUp method: '1-POS-3MIN' Project: CPK2023
 Method Info : Mobile Phase: A: water(0.01%TFA) B:ACN(0.01%TFA)
 Gradient: 5% to 95%B within 2.0 min
 Flow Rate :1.2ml/min
 Column :Shim-pack Scepter C18-120, 3.0*33mm,3um
 Oven Temperature : 45C



Integration Results for DAD1 A, Sig=214,4 Ref=off

RetTim	Width	Area	Height	Area%
0.55	0.03	1200.45	745.02	99.72
0.77	0.02	3.33	3.06	0.28

Integration Results for DAD1 B, Sig=254,4 Ref=off

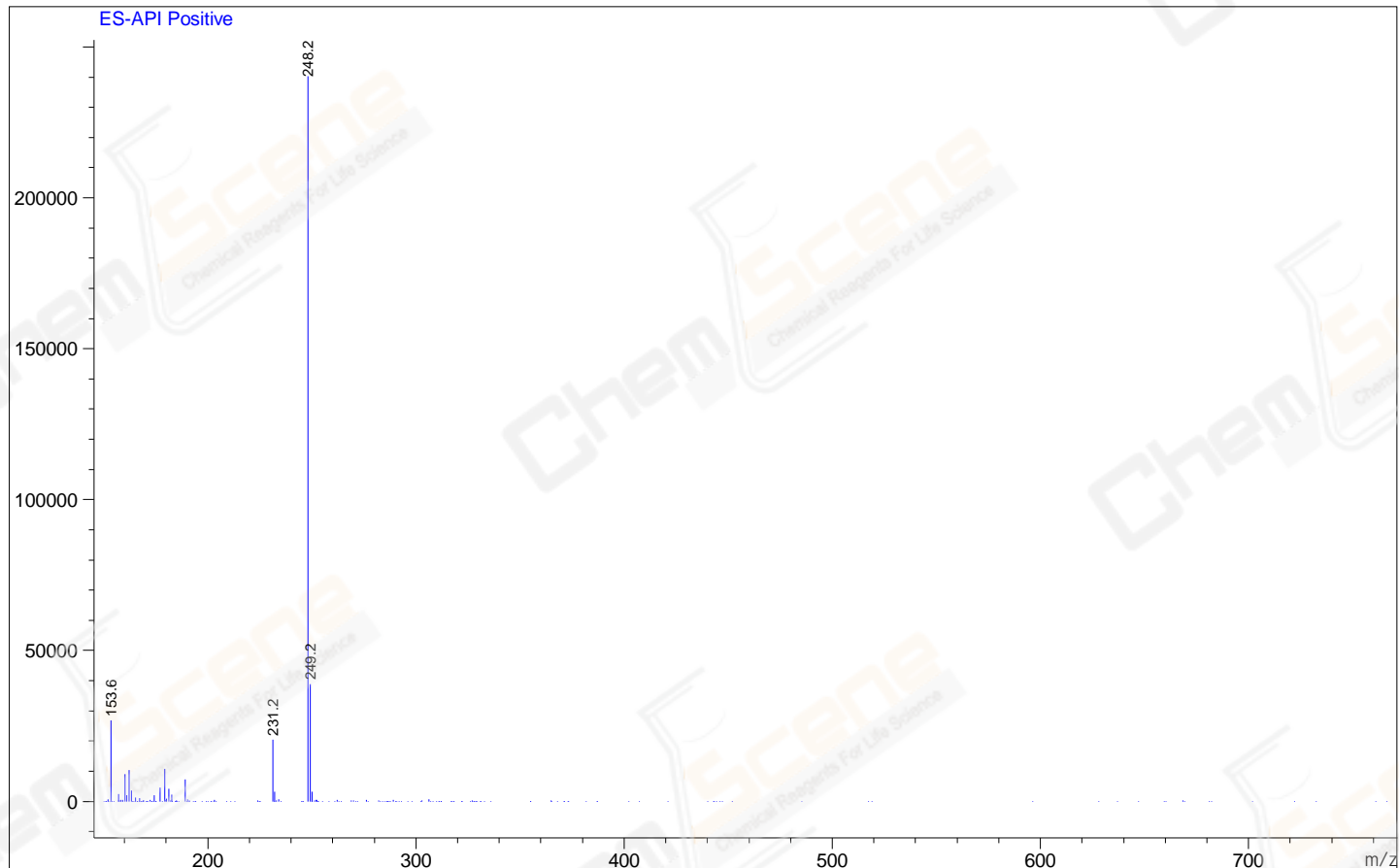
RetTim	Width	Area	Height	Area%
0.32	0.03	10.62	5.46	0.59
0.50	0.02	1.98	1.31	0.11
0.55	0.02	1787.93	1131.10	99.07
0.77	0.02	4.14	3.62	0.23

Integration Results for MSD1 TIC, MS File

RetTim	Width	Area	Height	Area%
0.55	0.06	4214869.50	1169300.63	100.00

Ret. Time: 0.55

<<<< POSITIVE SPECTRA >>>>



*** End of Report ***