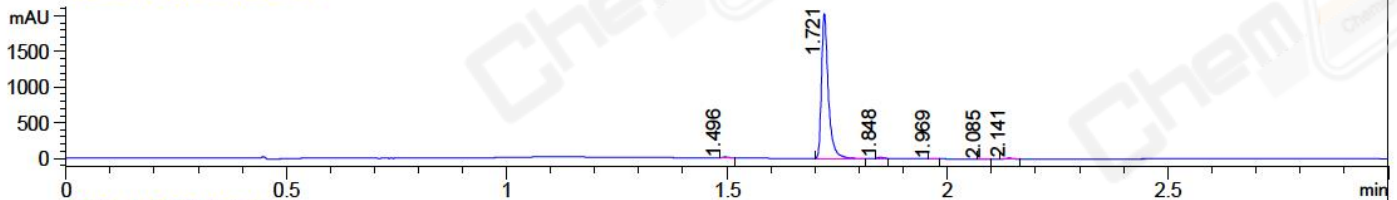
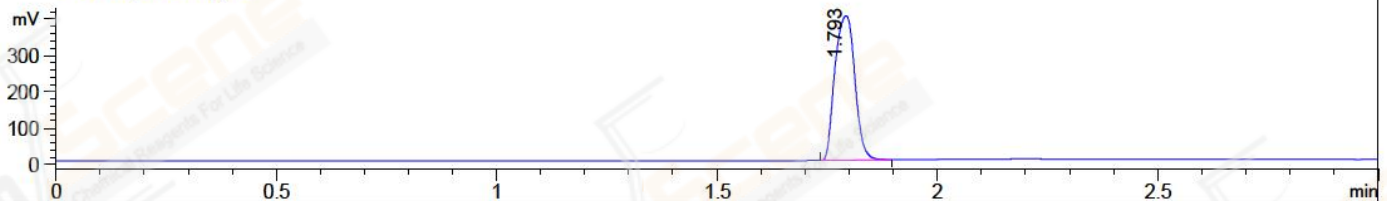


File ..ta\2018\20180625\20180625-1\TJH5556-033-1.D Tgt Mass (CHM):  
Injection Date : 25 Jun 18 10:58 am +0800 Seq. Line : 16  
Sample Name : TJH5556-033-1 Location : P2-B-02  
Acq. Operator : SYSTEM Inj : 1  
Spec. Reported : MS Integration Inj Volume : 1 ul  
Acq. Method : D:\LCMS03\Data\2018\20180625\20180625-1\1-POS-3MIN.M  
Analysis Method : D:\LCMS03\Data\2018\20180625\20180625-1\1-POS-3MIN.M  
Catalog No : CS-0028478 Batch#31115  
Method Info : Mobile Phase: A: water(0.01%TFA) B:ACN(0.01%TFA)  
Gradient: 5% to 95%B within 1.3 min  
Flow Rate :1.8ml/min  
Column :SunFire C18, 4.6\*50mm,3.5um A-RP-186  
Oven Temperature : 45C

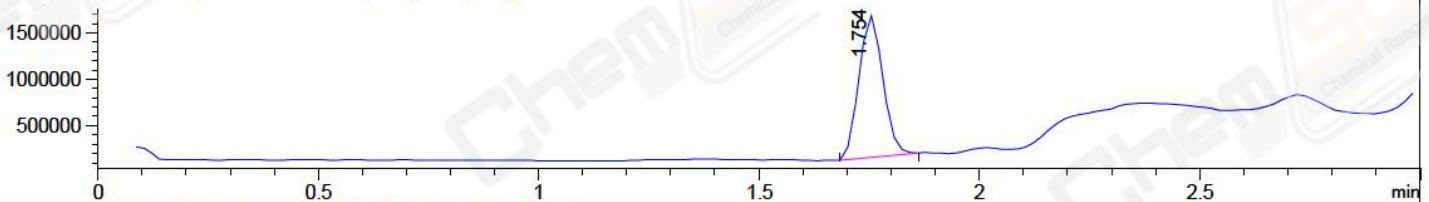
DAD1 A, Sig=214,4 Ref=off



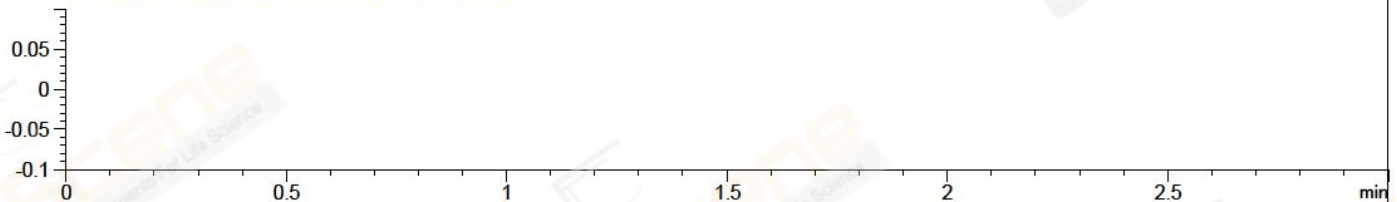
ELS1 A, ELSD Signal



MSD1 TIC, MS File ES-API, Pos, Scan, Frag: 70



Ion 1, MSD1 1, Target Mass 0 +H Positive, EIC=0.7:1.7



Integration Results for DAD1 A, Sig=214,4 Ref=off

| RetTim | Width | Area    | Height  | Area% | MS (+) |
|--------|-------|---------|---------|-------|--------|
| 1.50   | 0.02  | 13.69   | 14.71   | 0.62  | 102    |
| 1.72   | 0.02  | 2168.78 | 2034.64 | 98.01 | 614    |
| 1.85   | 0.01  | 11.46   | 12.89   | 0.52  | 233    |
| 1.97   | 0.02  | 2.78    | 3.06    | 0.13  | 233    |
| 2.08   | 0.02  | 2.81    | 2.97    | 0.13  | 233    |
| 2.14   | 0.02  | 13.36   | 12.46   | 0.60  | 338    |

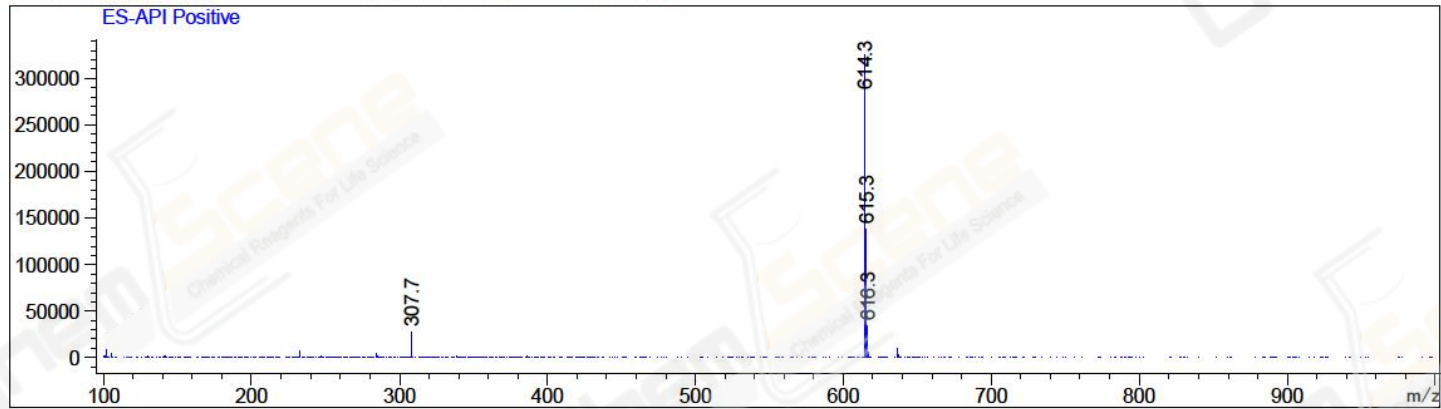
Integration Results for ELS1 A, ELSD Signal

| RetTim | Width | Area    | Height | Area%  | MS (+) |
|--------|-------|---------|--------|--------|--------|
| 1.79   | 0.05  | 1249.56 | 397.70 | 100.00 | 614    |

Integration Results for MSD1 TIC, MS File

| RetTim | Width | Area       | Height     | Area%  | MS (+) |
|--------|-------|------------|------------|--------|--------|
| 1.75   | 0.06  | 5799698.50 | 1523416.63 | 100.00 | 614    |

Ret. Time: 1.75 <<<< POSITIVE SPECTRA >>>>



\*\*\* End of Report \*\*\*