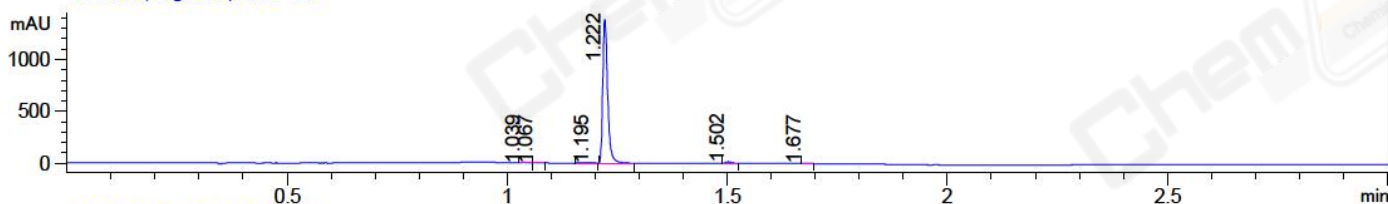
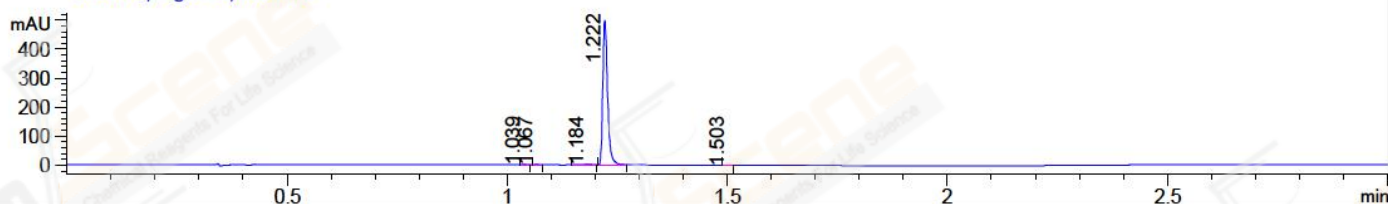


File ..1\DATA\2018\20180626\282\BIZ2018-625-CXL3.D Tgt Mass (CHM):
 Injection Date : 26 Jun 18 6:49 pm +0800 Seq. Line : 21
 Sample Name : BIZ2018-625-CXL3 Location : P2-B-05
 Acq. Operator : LQ_1052 Inj : 1
 Spec. Reported : MS Integration Inj Volume : 0.5 ul
 Acq. Method : D:\Chem32\1\data\2018\20180626\282\1-POS-3MIN-1.M
 Analysis Method : D:\CHEM32\1\DATA\2018\20180626\282\1-POS-3MIN-1.M
 Catalog No : CS-0002653 Batch#31173 A-RP-314
 Method Info : Mobile Phase: A: water(0.01%TFA) B:ACN(0.01%TFA)
 Gradient: 5% to 95%B within 1.3 min
 Flow Rate :1.8ml/min
 Column :SunFire C18, 4.6*50mm,3.5um A-RP-314
 Oven Temperature : 45□

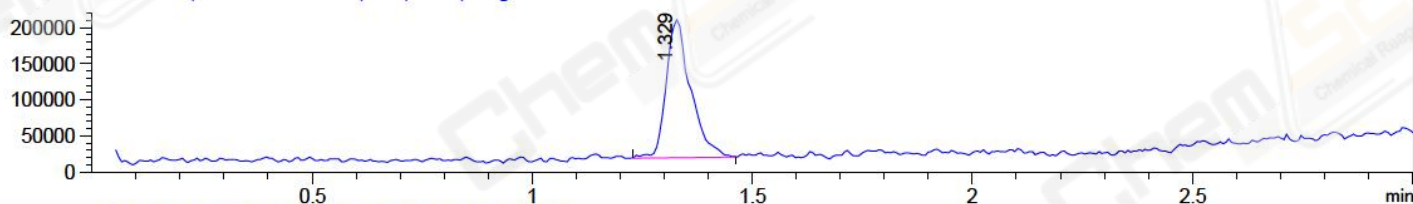
DAD1 B, Sig=214,4 Ref=off



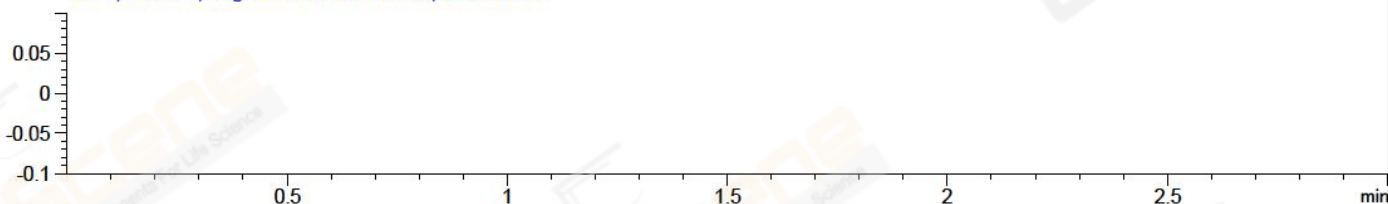
DAD1 C, Sig=254,4 Ref=off



MSD1 TIC, MS File ES-API, Pos, Scan, Frag: 70



Ion 1, MSD1 1, Target Mass 0 +H Positive, EIC=0.7:1.7



Integration Results for DAD1 B, Sig=214,4 Ref=off

RetTim	Width	Area	Height	Area%	MS (+)
1.04	0.01	2.58	4.02	0.24	260
1.07	0.01	2.62	4.10	0.24	260
1.19	0.03	5.76	3.06	0.53	389
1.22	0.01	1055.82	1385.84	97.59	260
1.50	0.01	13.25	14.55	1.22	260
1.68	0.01	1.90	2.35	0.18	260

Integration Results for DAD1 C, Sig=254,4 Ref=off

RetTim	Width	Area	Height	Area%	MS (+)
1.04	0.01	1.36	2.05	0.36	260
1.07	0.01	1.45	2.31	0.38	260
1.18	0.03	3.91	2.58	1.03	389
1.22	0.01	372.71	499.08	98.14	260
1.50	0.01	0.35	0.50	0.09	260

Integration Results for MSD1 TIC, MS File

1.33 0.06 742966.19 191266.20 100.00 437

RetTim	Width	Area	Height	Area%	MS (+)
--------	-------	------	--------	-------	--------

Ret. Time: 1.33

<<<< POSITIVE SPECTRA >>>>

