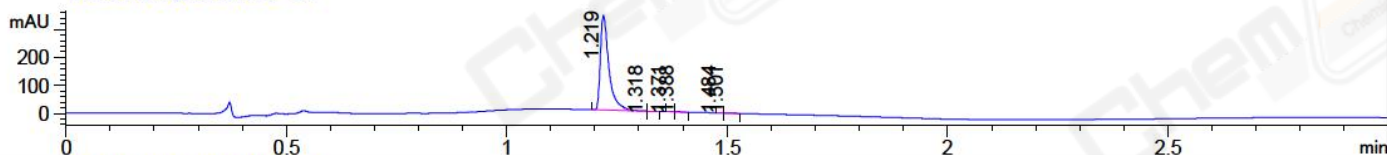
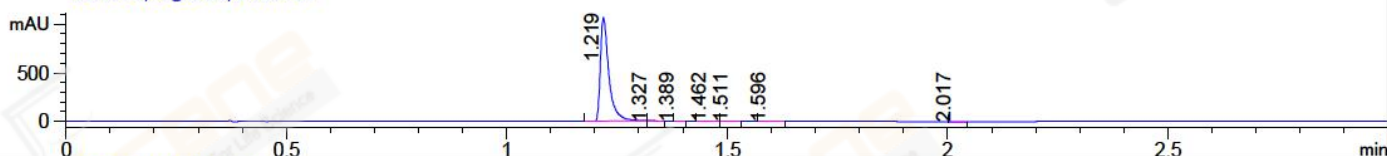


File ..2018\20180517\20180517-1\BIZ2018-517-CXL4.D Tgt Mass (CHM):
Injection Date : 17 May 18 6:53 pm +0800 Seq. Line : 119
Sample Name : BIZ2018-517-CXL4 Location : P2-E-03
Acq. Operator : SYSTEM Inj : 1
Spec. Reported : MS Integration Inj Volume : 2 ul
Acq. Method : D:\LCMS03\Data\2018\20180517\20180517-1\1-POS-3MIN.M
Analysis Method : D:\LCMS03\Data\2018\20180517\20180517-1\1-POS-3MIN.M
Catalog No : CS-5863 Batch#31198
Method Info : Mobile Phase: A: water(0.01%TFA) B:ACN(0.01%TFA)
Gradient: 5% to 95%B within 1.3 min
Flow Rate :1.8ml/min
Column :SunFire C18, 4.6*50mm,3.5um A-RP-186
Oven Temperature : 45C

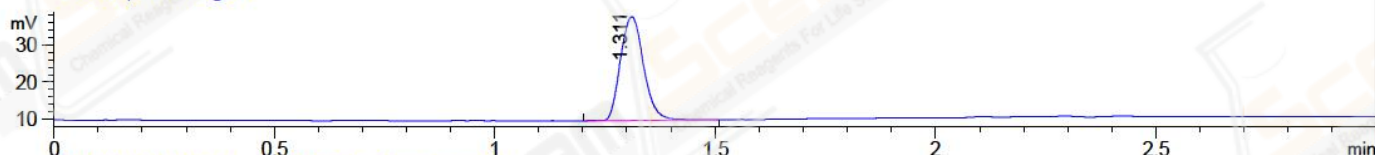
DAD1 A, Sig=214,4 Ref=off



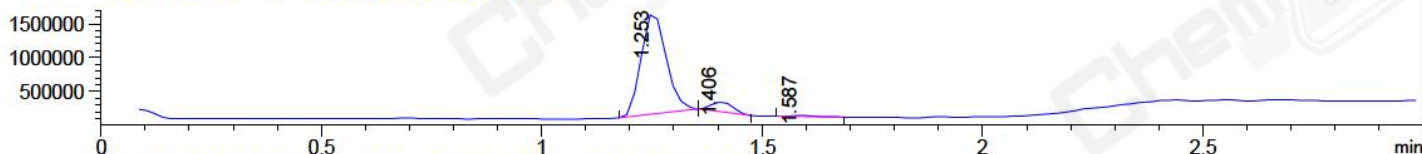
DAD1 B, Sig=254,4 Ref=off



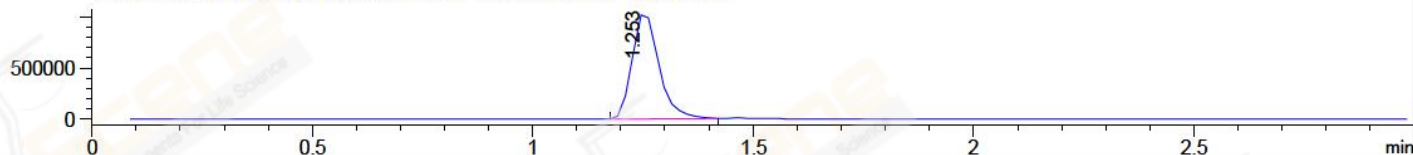
ELS1 A, ELSD Signal



MSD1 TIC, MS File ES-API, Pos, Scan, Frag: 70



Ion 380.1, MSD1 380.1, Target Mass 379.1 +H Positive, EIC=379.8:380.8



Integration Results for DAD1 A, Sig=214,4 Ref=off

RetTim	Width	Area	Height	Area%	MS (+)
1.22	0.02	455.22	336.93	99.17	380
1.32	0.01	0.40	0.13	0.09	380
1.37	0.01	0.97	1.16	0.21	702
1.39	0.02	1.39	1.52	0.30	702
1.48	0.01	0.09	0.16	0.02	233
1.50	0.02	0.97	0.93	0.21	233

Integration Results for DAD1 B, Sig=254,4 Ref=off

RetTim	Width	Area	Height	Area%	MS (+)
1.22	0.02	1425.80	1061.69	99.62	380
1.33	0.01	0.91	0.94	0.06	380
1.39	0.01	1.16	1.47	0.08	702
1.46	0.02	0.93	0.69	0.06	815
1.51	0.02	0.62	0.53	0.04	233
1.60	0.02	1.24	0.66	0.09	233
2.02	0.01	0.58	0.66	0.04	233

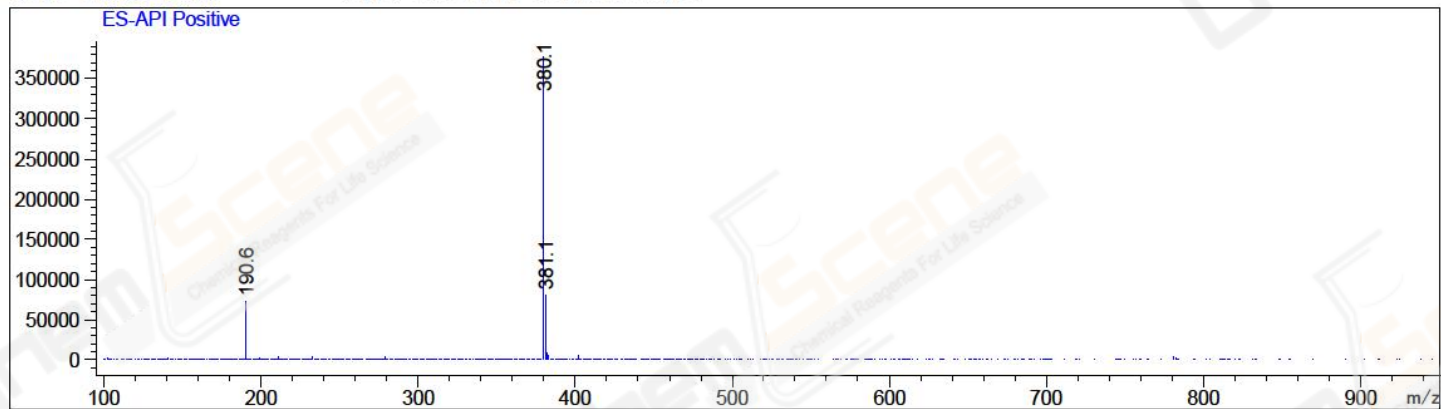
Integration Results for ELS1 A, ELSD Signal

RetTim	Width	Area	Height	Area%	MS (+)
1.31	0.06	102.57	28.07	100.00	380

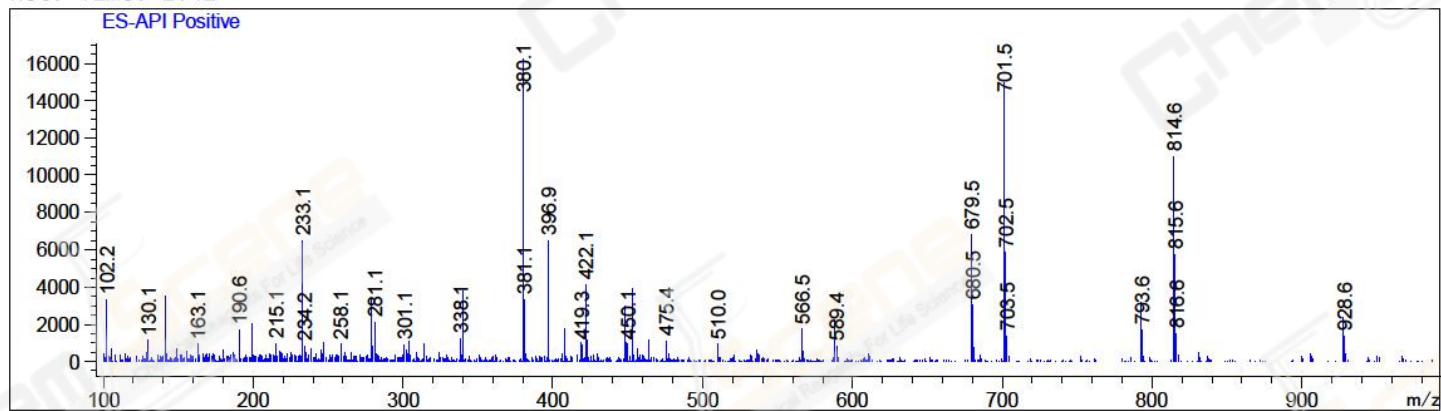
Integration Results for MSD1 TIC, MS File

RetTim	Width	Area	Height	Area%	MS (+)
1.25	0.06	5924320.50	1505981.13	91.72	380
1.41	0.05	472244.63	142430.63	7.31	380
1.59	0.07	62658.98	15708.60	0.97	233

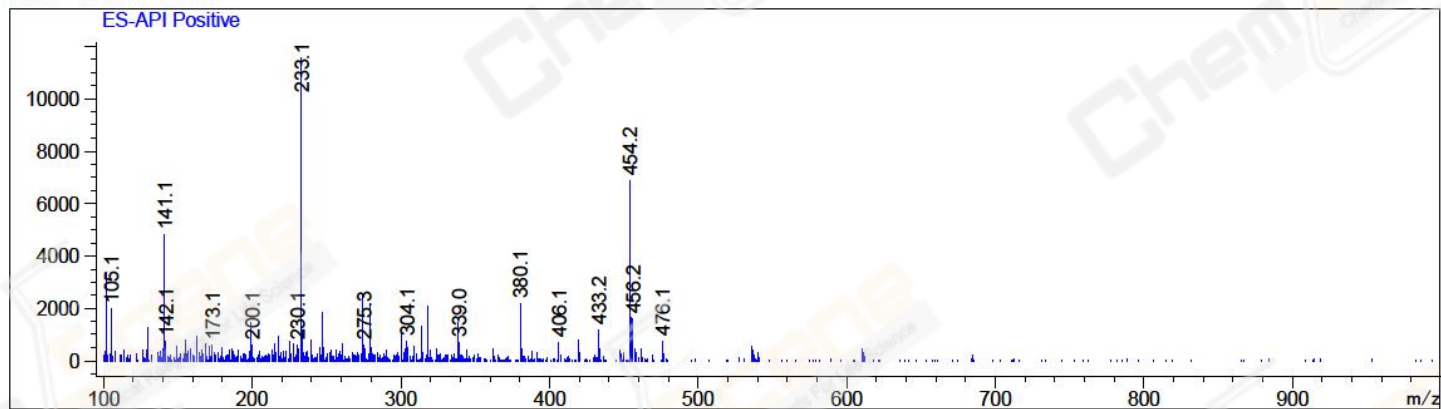
Ret. Time: 1.25 <<<< POSITIVE SPECTRA >>>>



Ret. Time: 1.41



Ret. Time: 1.59



*** End of Report ***