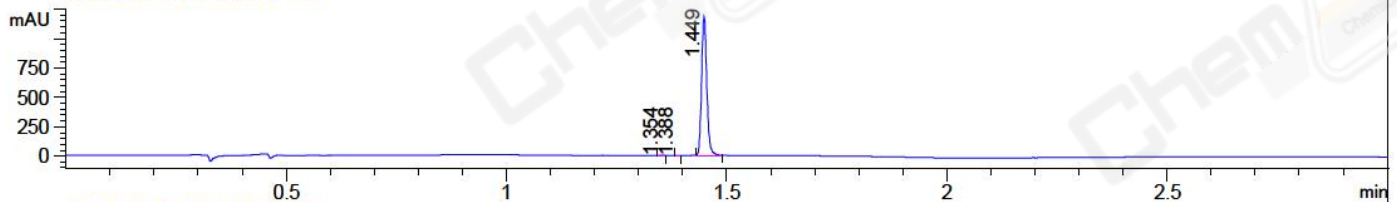
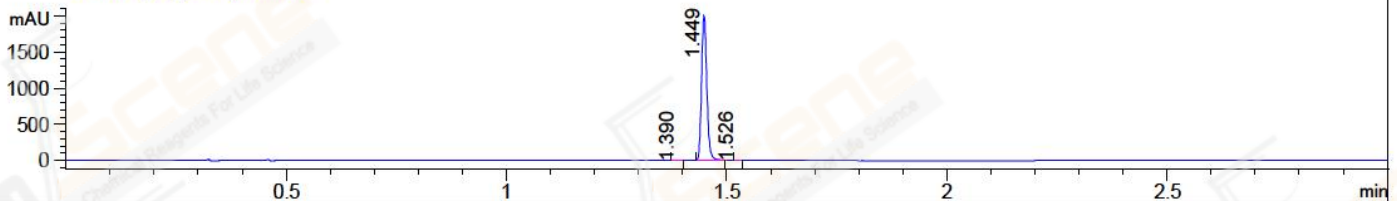


File ..\DATA\2018\20180713\311\BIZ2018-713-WYQ9.D Tgt Mass (CHM):
 Injection Date : 13 Jul 18 5:27 pm +0800 Seq. Line : 18
 Sample Name : BIZ2018-713-WYQ9 Location : P1-B-05
 Acq. Operator : LQ_1052 Inj : 1
 Spec. Reported : MS Integration Inj Volume : 5 ul
 Acq. Method : D:\Chem32\1\data\2018\20180713\311\1-POS-3MIN-1.M
 Analysis Method : D:\CHEM32\1\DATA\2018\20180713\311\1-POS-3MIN-1.M
 Catalog No : CS-0007086 Batch#31498 A-RP-314
 Method Info : Mobile Phase: A: water(0.01%TFA) B:ACN(0.01%TFA)
 Gradient: 5% to 95%B within 1.3 min
 Flow Rate :1.8ml/min
 Column :SunFire C18, 4.6*50mm,3.5um A-RP-314
 Oven Temperature : 45□

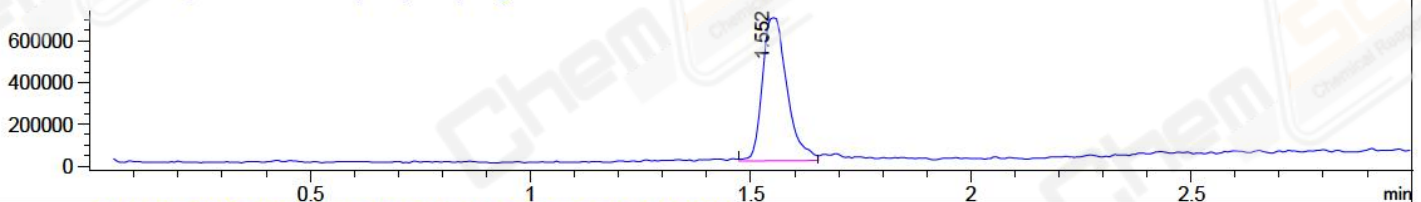
DAD1 B, Sig=214,4 Ref=off



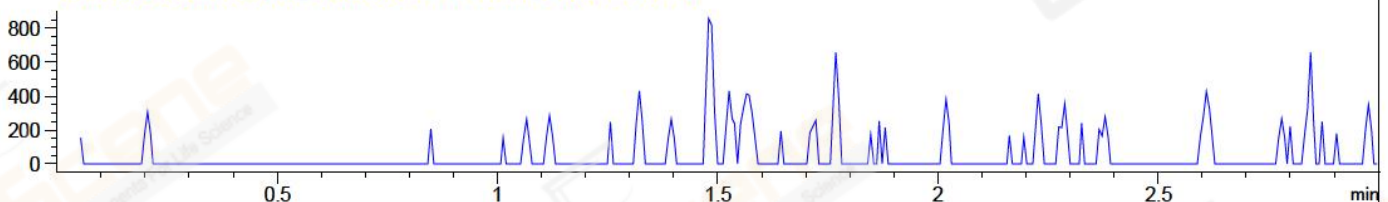
DAD1 C, Sig=254,4 Ref=off



MSD1 TIC, MS File ES-API, Pos, Scan, Frag: 70



Ion 365.1, MSD1 365.1, Target Mass 364.1 +H Positive, EIC=364.8:365.8



Integration Results for DAD1 B, Sig=214,4 Ref=off

RetTim	Width	Area	Height	Area%	MS (+)
1.35	0.01	1.12	1.61	0.11	163
1.39	0.01	0.38	0.62	0.04	163
1.45	0.01	976.38	1190.87	99.85	163

Integration Results for DAD1 C, Sig=254,4 Ref=off

RetTim	Width	Area	Height	Area%	MS (+)
1.39	0.01	1.11	1.35	0.07	163
1.45	0.01	1674.81	2001.12	99.92	163
1.53	0.01	0.26	0.40	0.02	347

Integration Results for MSD1 TIC, MS File

RetTim	Width	Area	Height	Area%	MS (+)
1.55	0.06	2657093.00	683719.13	100.00	347

Ret. Time: 1.55

<<<< POSITIVE SPECTRA >>>>

