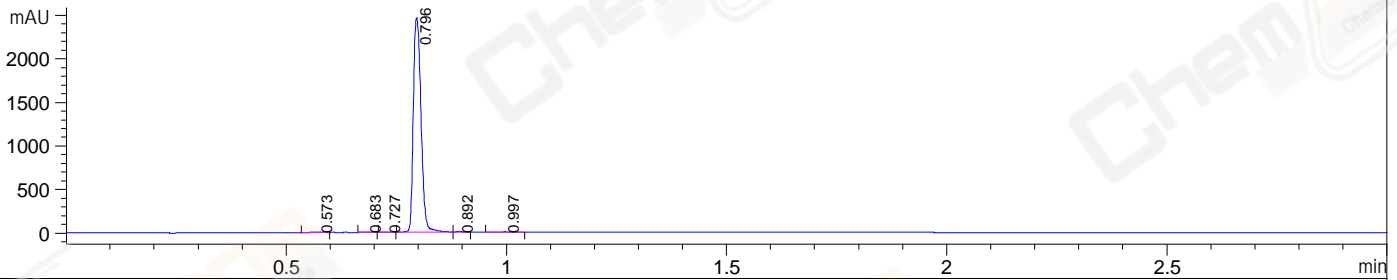
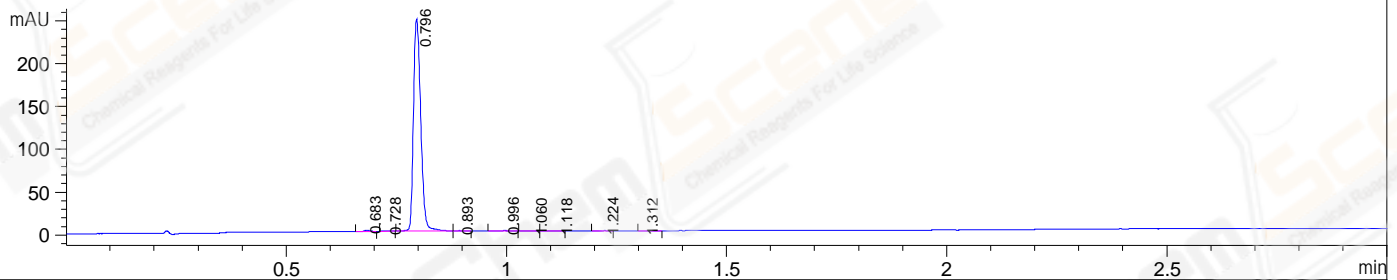


File E:\ChemStation\1\DATA\2023\2023-11\2023-11-22\BIZ2023-N22-WLQ28-UPLC-MS-10-020260.D
 Injection Date : 22-Nov-23, 16:17:20 Tgt Mass(EZX) :
 Sample Name : BIZ2023-N22-WLQ28 Location : P2-B-05
 Acq. Operator : LY_2278 Inj : 1
 Spec. Reported : MS Integration Inj Volume : 0.8 ul
 Acq. Method : E:\ChemStation\1\Methods\1-POS-UPLC3.0MIN(1.2)(150-1000).M
 Analysis Method : E:\CHEMSTATION\1\METHODS\1-POS-UPLC3.0MIN(1.2)(150-1000).M
 CAS NO. : 130405-40-2 WalkUp method: '1-POS-3MIN' Project: BIZ2023
 Method Info : Mobile Phase: A: water(0.01%TFA) B:ACN(0.01%TFA)
 Gradient: 5% to 95%B within 2.0 min
 Flow Rate :1.2ml/min
 Column :Shim-pack Scepter C18-120, 3.0*33mm,3um
 Oven Temperature : 45C

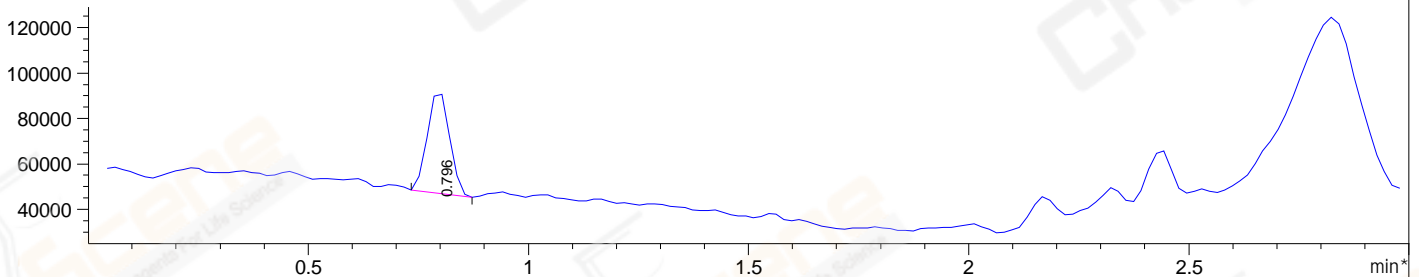
DAD1 A, Sig=214,4 Ref=off



DAD1 B, Sig=254,4 Ref=off



*MSD1 TIC, MS File ES-API, Pos, Scan, Frag: 70



Integration Results for DAD1 A, Sig=214,4 Ref=off

RetTim	Width	Area	Height	Area%
0.57	0.03	1.65	0.79	0.05
0.68	0.02	3.36	3.48	0.11
0.73	0.02	5.59	5.05	0.19
0.80	0.02	2978.96	2458.87	99.30
0.89	0.02	3.22	2.92	0.11
1.00	0.02	7.10	4.48	0.24

Integration Results for DAD1 B, Sig=254,4 Ref=off

RetTim	Width	Area	Height	Area%
0.68	0.02	1.21	1.27	0.42
0.73	0.02	0.63	0.57	0.22
0.80	0.02	282.21	247.02	98.67
0.89	0.01	0.30	0.28	0.10
1.00	0.03	0.77	0.42	0.27
1.06	0.01	0.17	0.17	0.06
1.12	0.03	0.20	0.09	0.07
1.22	0.02	0.34	0.24	0.12

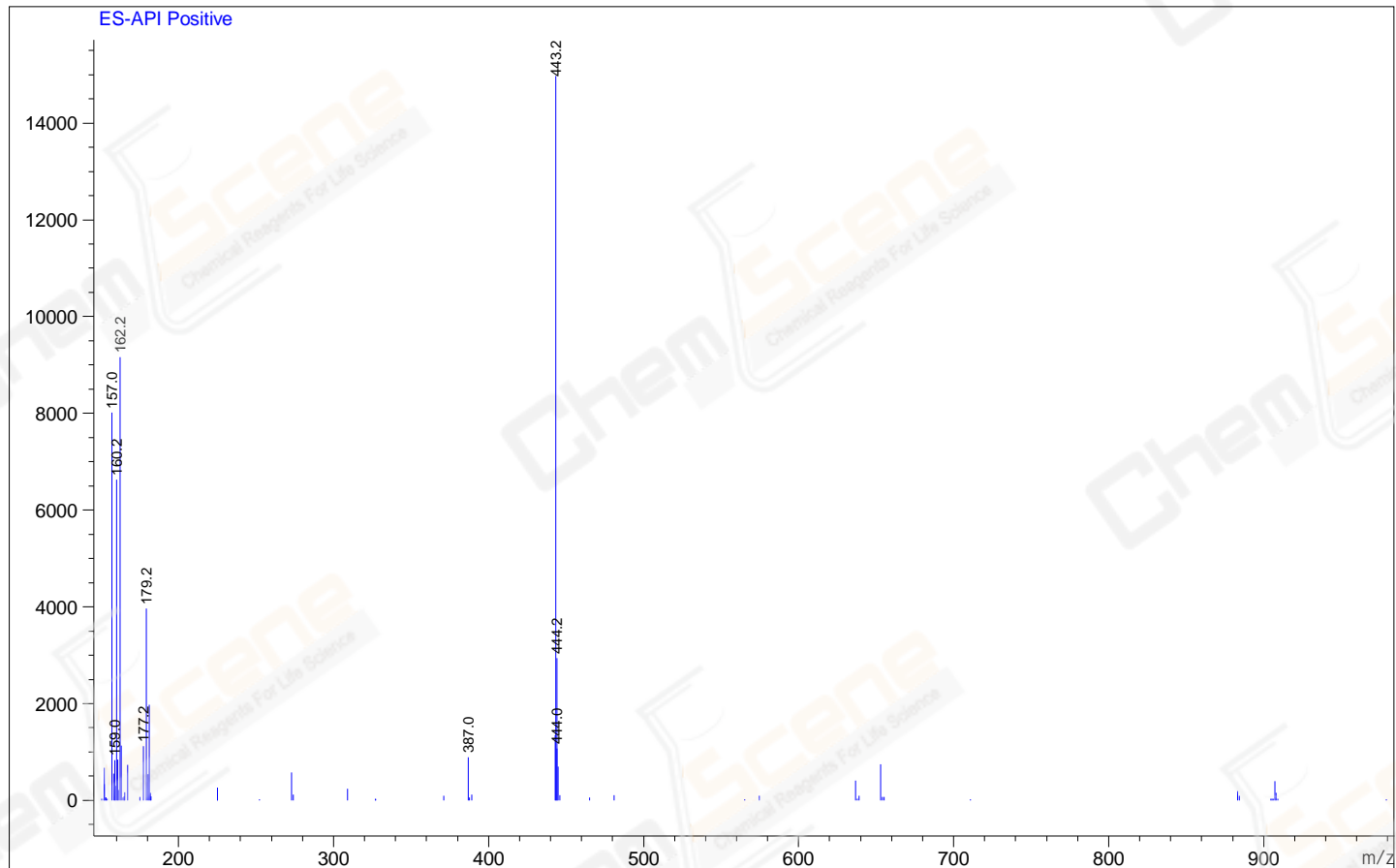
1.31 0.03 0.18 0.09 0.06

Integration Results for MSD1 TIC, MS File

RetTime	Width	Area	Height	Area%
0.80	0.06	157927.17	45418.61	100.00

Ret. Time: 0.80

<<<< POSITIVE SPECTRA >>>>



*** End of Report ***