

File ..2 2019-11-12 08-32-14\CPK2019-N11-31537_1.D Tgt Mass (CHM):

Injection Date : 12 Nov 19 9:57 am +0800 Seq. Line : 18

Sample Name : CPK2019-N11-31537 Location : P2-F-06

Acq. Operator : SYSTEM Inj : 1

Spec. Reported : MS Integration Inj Volume : 3 ul

Acq. Method : D:\LCMS03\Data\20191112\20191112 2019-11-12 08-32-14\1-POS-3MIN(100-3000).M

Analysis Method : D:\LCMS03\Data\20191112\20191112 2019-11-12 08-32-14\1-POS-3MIN(100-3000).M

Catalog No : CS-3577 Batch#31537

Method Info : Mobile Phase: A: water(0.01%TFA) B:ACN(0.01%TFA)

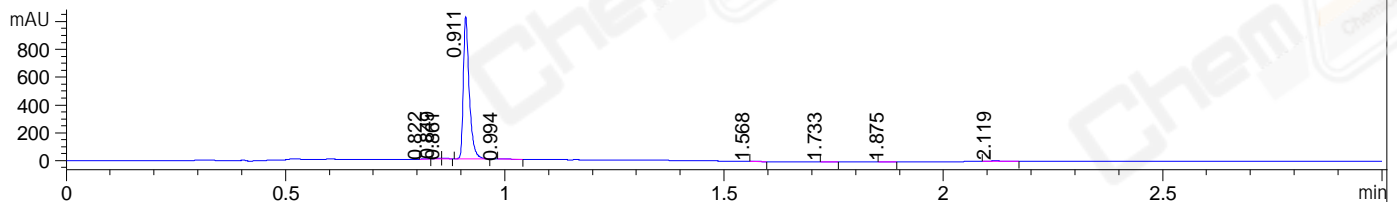
Gradient: 5% to 95%B within 1.3 min

Flow Rate :1.8ml/min

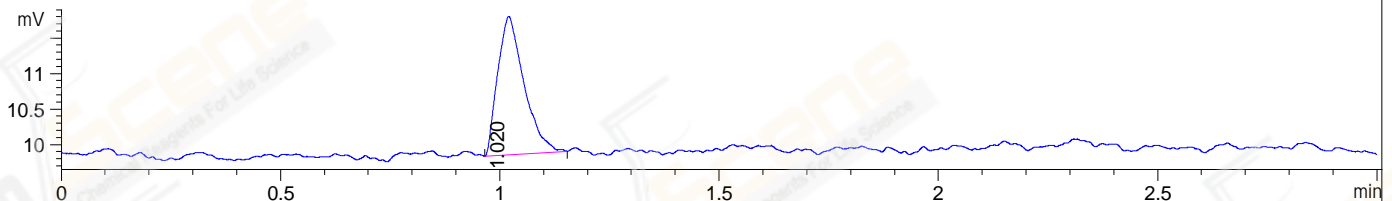
Column :SunFire C18, 4.6*50mm,3.5um A-RP-446

Oven Temperature : 45C

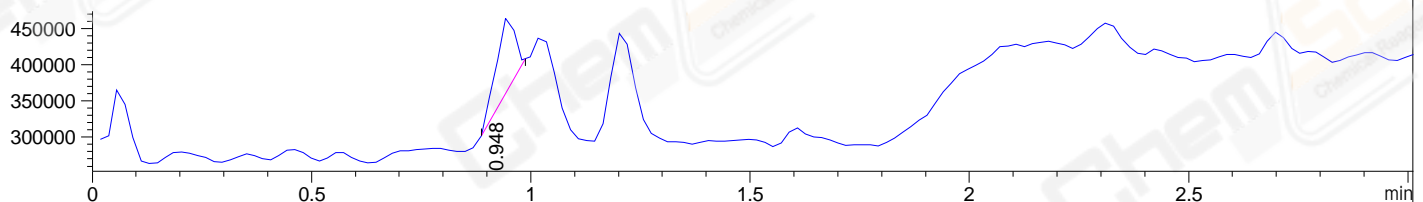
DAD1 A, Sig=214,4 Ref=off



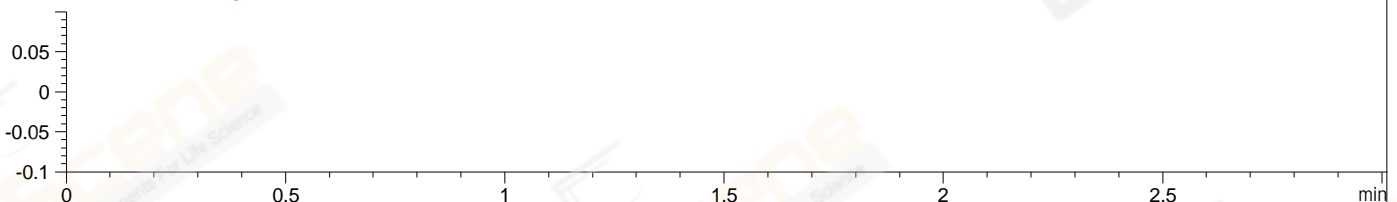
ELS1 A, ELSD Signal



MSD1 TIC, MS File ES-API, Pos, Scan, Frag: 70



Ion 1, MSD1 1, Target Mass 0 +H Positive, EIC=0.7:1.7



Integration Results for DAD1 A, Sig=214,4 Ref=off

RetTim	Width	Area	Height	Area%	MS (+)
0.82	0.01	1.50	1.78	0.15	114
0.85	0.01	5.33	6.25	0.54	114
0.86	0.01	4.45	5.52	0.45	114
0.91	0.01	965.37	1019.08	97.42	114
0.99	0.03	2.88	1.46	0.29	114
1.57	0.02	0.79	0.81	0.08	114
1.73	0.02	0.55	0.49	0.06	114
1.87	0.02	1.08	1.00	0.11	114
2.12	0.02	9.01	6.01	0.91	114

Integration Results for ELS1 A, ELSD Signal

RetTim	Width	Area	Height	Area%	MS (+)
1.02	0.06	8.11	1.95	100.00	114

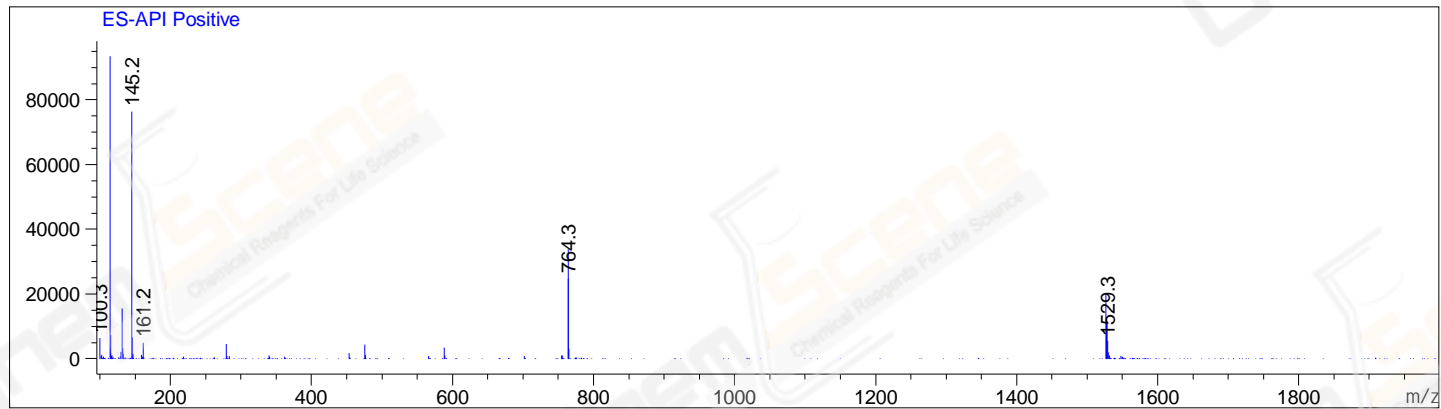
Integration Results for MSD1 TIC, MS File

RetTim	Width	Area	Height	Area%	MS (+)
--------	-------	------	--------	-------	--------

-----|-----|-----|-----|-----|-----|
0.95 0.05 303460.59 100917.61 100.00 114

Ret. Time: 0.95

<<<< POSITIVE SPECTRA >>>>



*** End of Report ***