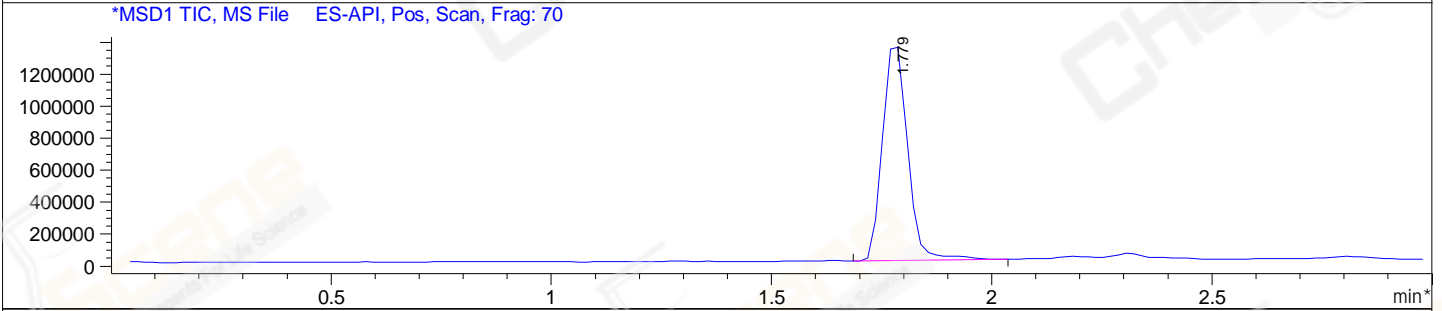
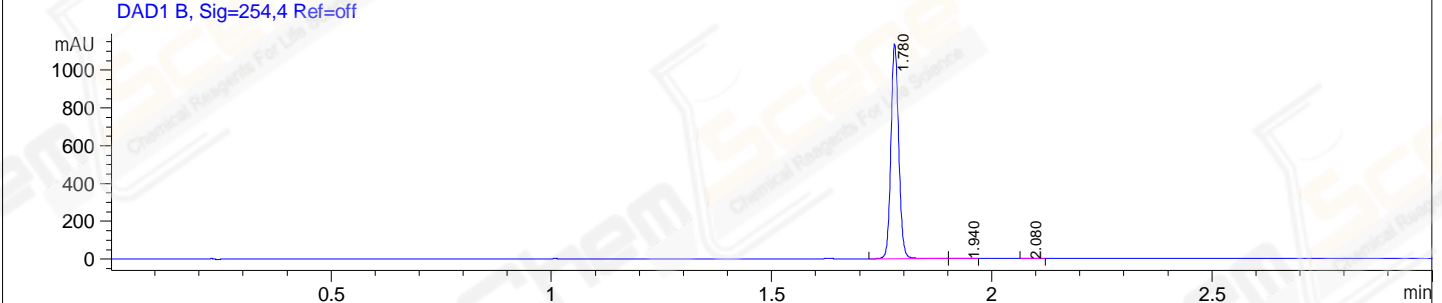
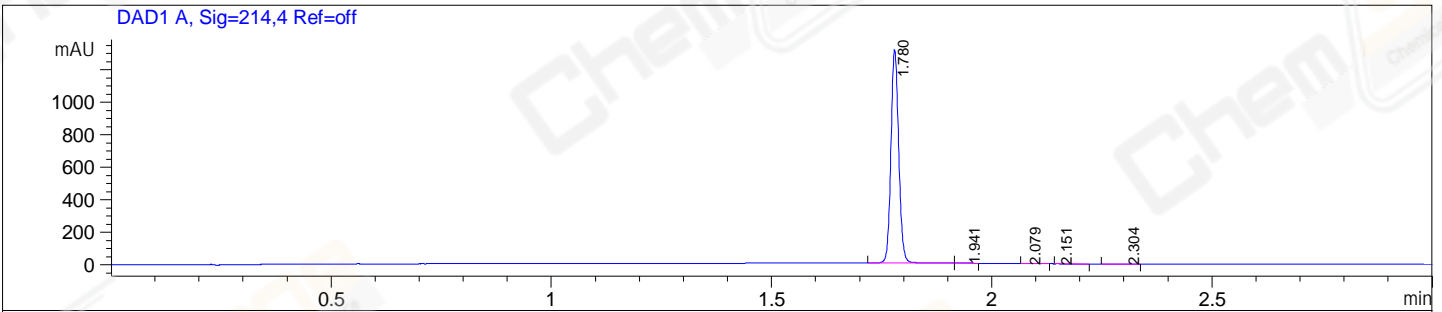


File E:\ChemStation\1\DATA\2023\2023-11\2023-11-27\BIZ2023-N27-SCH23-UPLC-MS-10-020667.D
 Injection Date : 27-Nov-23, 17:27:26 Tgt Mass(EZX) :
 Sample Name : BIZ2023-N27-SCH23 Location : P2-A-10
 Acq. Operator : LY_2278 Inj : 1
 Spec. Reported : MS Integration Inj Volume : 0.8 ul
 Acq. Method : E:\ChemStation\1\Methods\1-POS-UPLC3.0MIN(1.2)(150-1000).M
 Analysis Method : E:\CHEMSTATION\1\METHODS\1-POS-UPLC3.0MIN(1.2)(150-1000).M
 CAS NO. : 2097938-73-1 WalkUp method: '1-POS-3MIN' Project: BIZ2023
 Method Info : Mobile Phase: A: water(0.01%TFA) B:ACN(0.01%TFA)
 Gradient: 5% to 95%B within 2.0 min
 Flow Rate :1.2ml/min
 Column :Shim-pack Scepter C18-120, 3.0*33mm,3um
 Oven Temperature : 45C



Integration Results for DAD1 A, Sig=214,4 Ref=off

RetTim	Width	Area	Height	Area%
1.78	0.02	1613.65	1310.23	99.45
1.94	0.02	2.72	2.09	0.17
2.08	0.03	1.98	0.99	0.12
2.15	0.06	1.43	0.27	0.09
2.30	0.03	2.76	1.26	0.17

Integration Results for DAD1 B, Sig=254,4 Ref=off

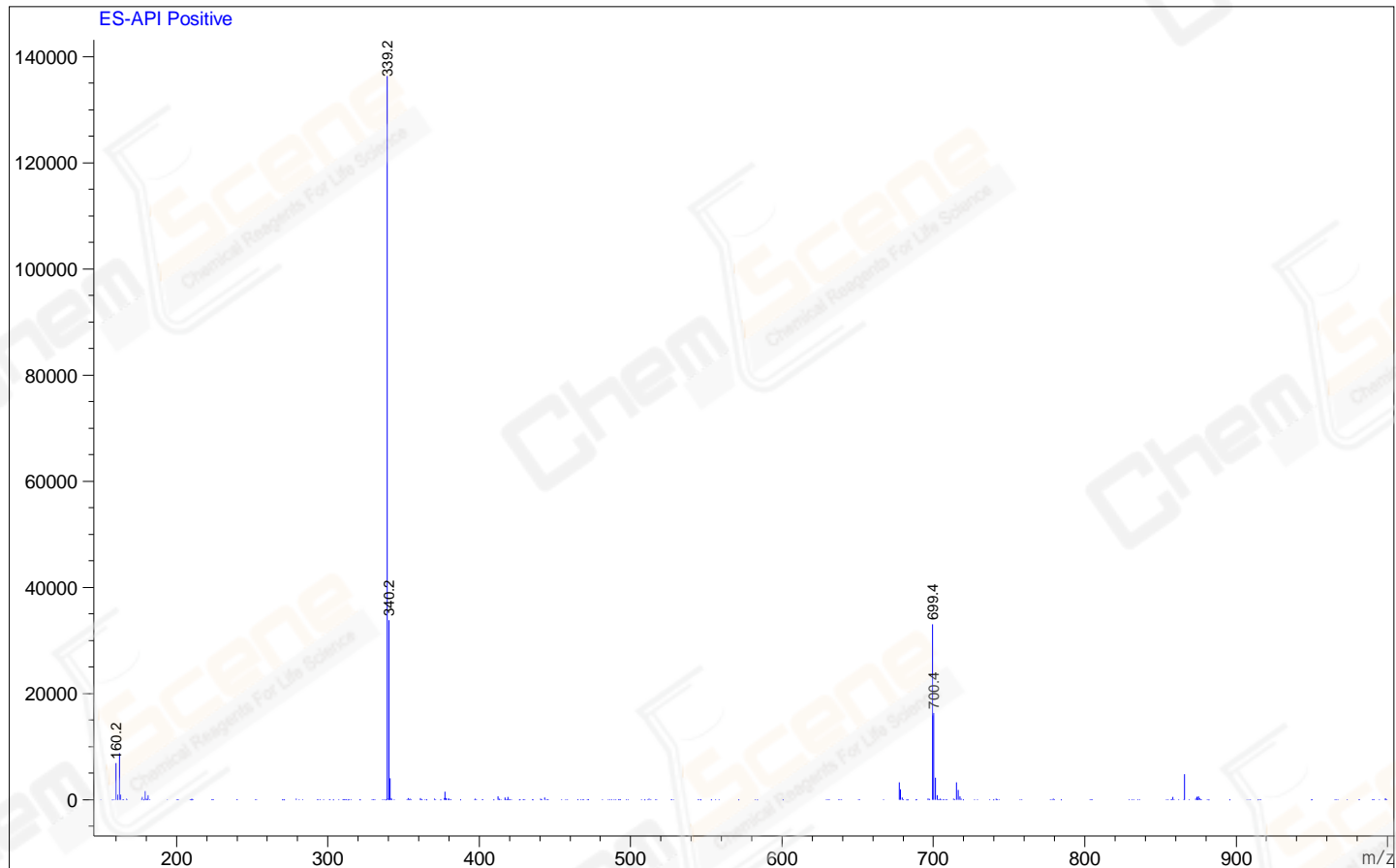
RetTim	Width	Area	Height	Area%
1.78	0.02	1397.92	1134.39	99.71
1.94	0.02	2.51	1.77	0.18
2.08	0.02	1.58	0.88	0.11

Integration Results for MSD1 TIC, MS File

RetTim	Width	Area	Height	Area%
1.78	0.07	5385102.00	1388549.88	100.00

Ret. Time: 1.78

<<<< POSITIVE SPECTRA >>>>



*** End of Report ***