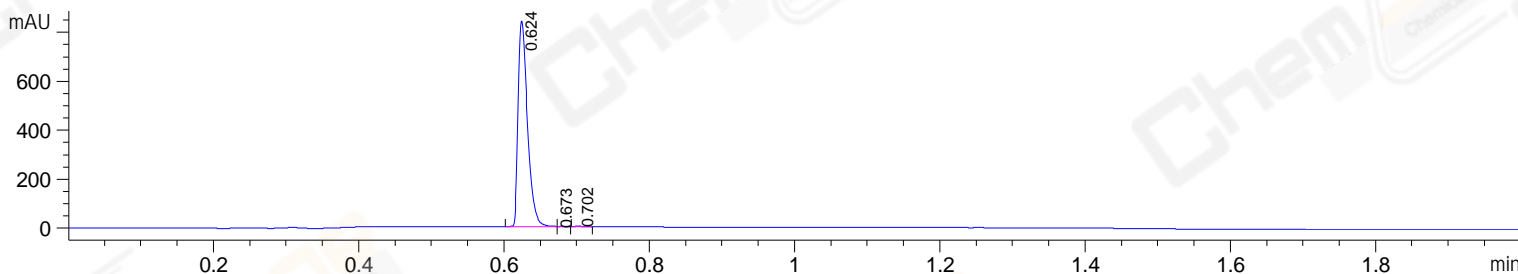
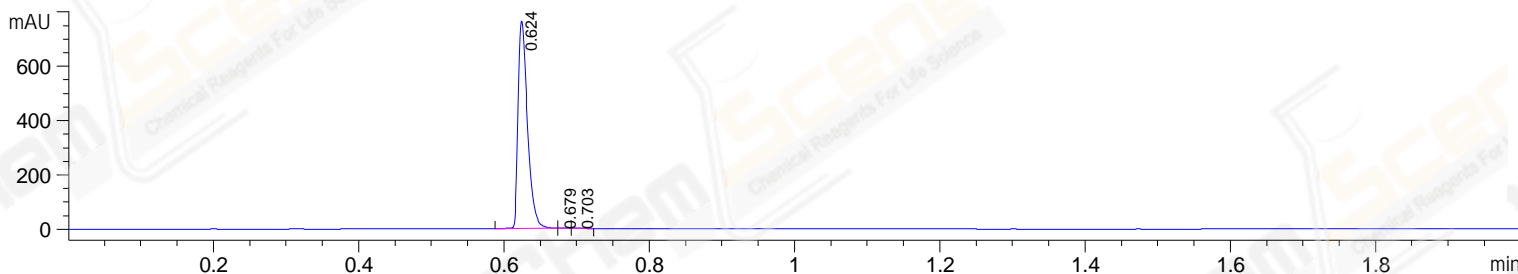


File E:\DATA\2023\2023-12\2023-12-01\ZSS33405-001-8_2-UPLC-MS-03-028126.D
 Injection Date : 01-Dec-23, 10:45:01 Tgt Mass(EZX) :
 Sample Name : ZSS33405-001-8_2 Location :
 Acq. Operator : LY_2278 Inj : 1
 Spec. Reported : MS Integration Inj Volume : 0.2 ul
 Acq. Method : E:\Chem32\1\Methods\1-POS-UPLC2.0MIN(0.8)(150-1000).M
 Analysis Method : E:\CHEM32\1\METHODS\1-POS-UPLC2.0MIN(0.8)(150-1000).M
 CAS NO. : 842148-40-7 WalkUp method: '1-POS-2MIN' Project: LD2111
 Method Info : Mobile Phase: A: water(0.01%TFA) B:ACN(0.01%TFA)
 Gradient: 5% to 95%B within 1.3 min
 Flow Rate :0.8ml/min
 Column :Poroshell 120 EC- C18, 2.1*50mm,1.9um
 Oven Temperature : 45C

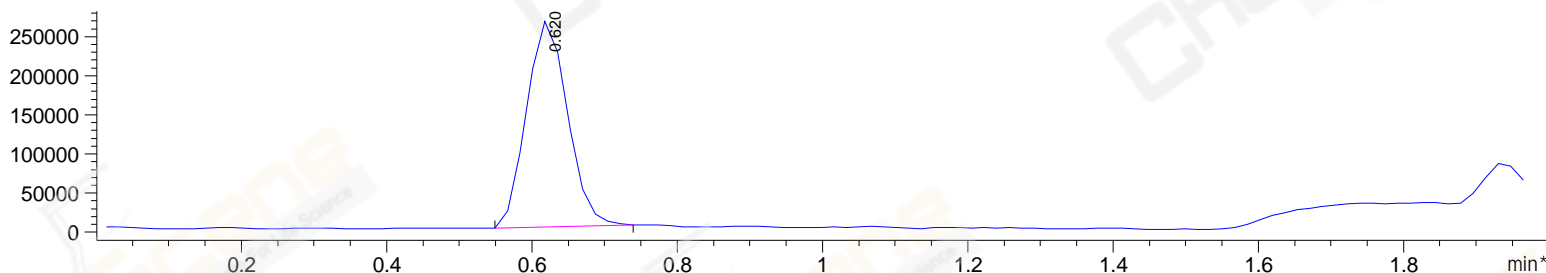
DAD1 A, Sig=214,4 Ref=off



DAD1 B, Sig=254,4 Ref=off



*MSD1 TIC, MS File ES-API, Pos, Scan, Frag: 70



Integration Results for DAD1 A, Sig=214,4 Ref=off

RetTim	Width	Area	Height	Area%
0.62	0.01	753.15	847.21	99.72
0.67	0.01	0.83	1.07	0.11
0.70	0.01	1.26	2.02	0.17

Integration Results for DAD1 B, Sig=254,4 Ref=off

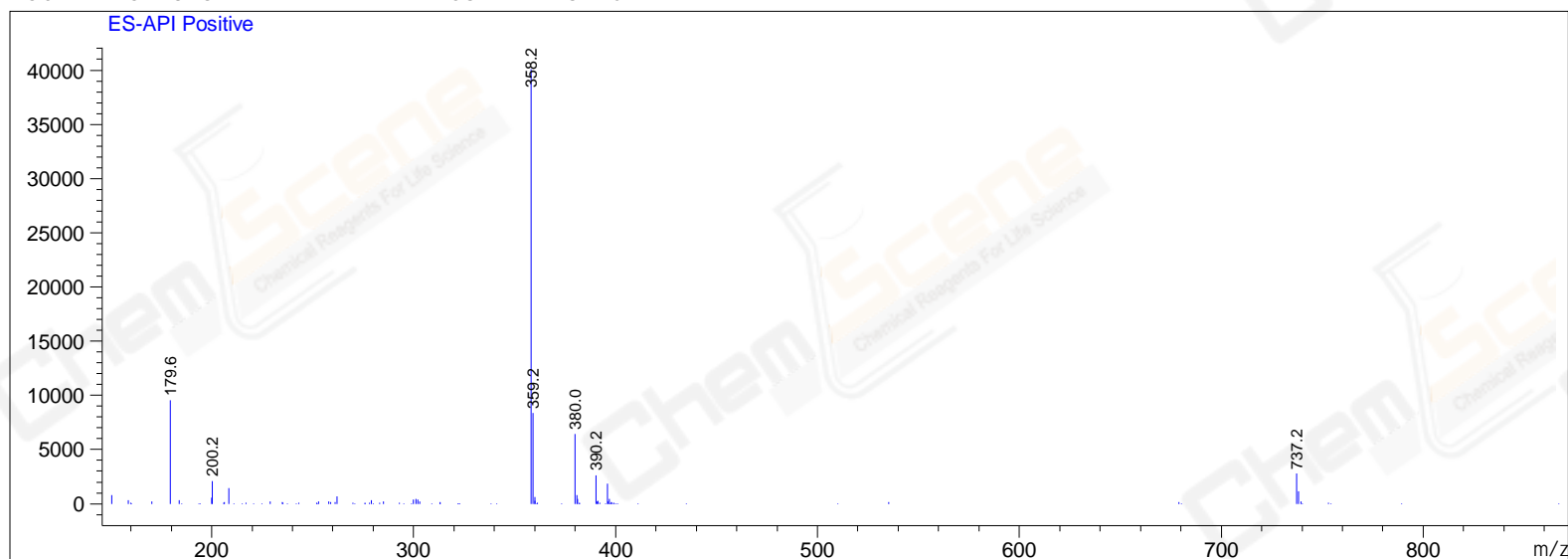
RetTim	Width	Area	Height	Area%
0.62	0.01	686.10	767.46	99.71
0.68	0.01	0.76	1.18	0.11
0.70	0.01	1.23	1.91	0.18

Integration Results for MSD1 TIC, MS File

RetTim	Width	Area	Height	Area%
0.62	0.06	1032964.44	263369.94	100.00

Ret. Time: 0.62

<<<< POSITIVE SPECTRA >>>>



*** End of Report ***