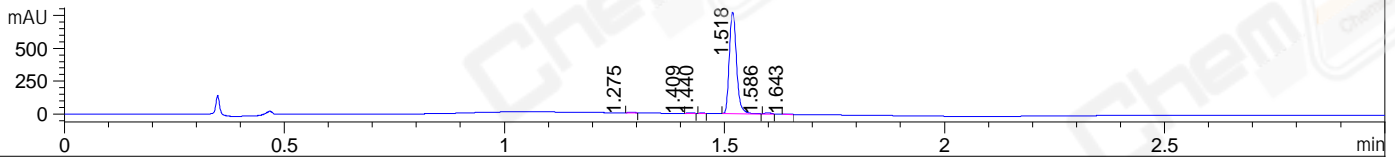
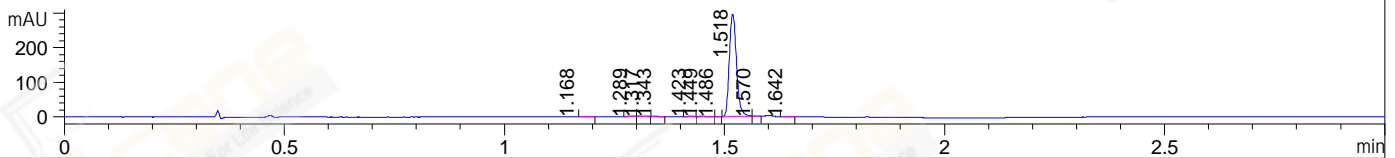


File ..ata\2018\20180806\20180806\LYF5633-036-P2.D Tgt Mass (CHM):
Injection Date : 6 Aug 18 5:34 pm +0800 Seq. Line : 104
Sample Name : LYF5633-036-P2 Location : P2-C-02
Acq. Operator : SYSTEM Inj : 1
Spec. Reported : MS Integration Inj Volume : 2 ul
Acq. Method : D:\LCMS03\Data\2018\20180806\20180806\1-POS-3MIN.M
Analysis Method : D:\LCMS03\Data\2018\20180806\20180806\1-POS-3MIN.M
CAS NO. : 1698055-85-4
Method Info : Mobile Phase: A: water(0.01%TFA) B:ACN(0.01%TFA)
Gradient: 5% to 95%B within 1.3 min
Flow Rate :1.8ml/min
Column :SunFire C18, 4.6*50mm,3.5um A-RP-186
Oven Temperature : 45C

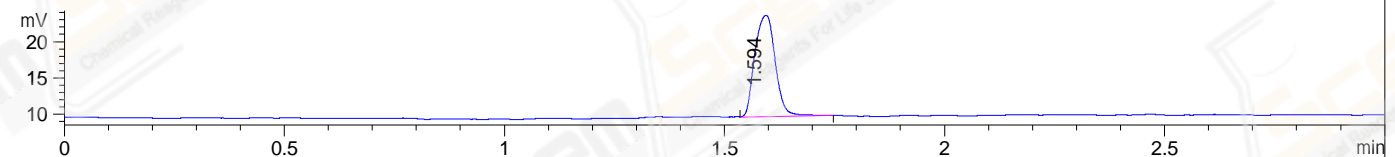
DAD1 A, Sig=214,4 Ref=off



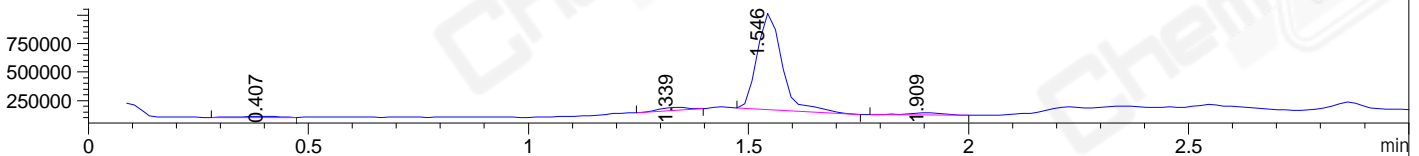
DAD1 B, Sig=254,4 Ref=off



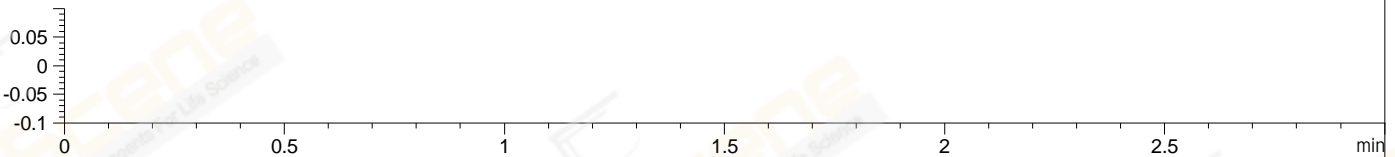
ELS1 A, ELSD Signal



MSD1 TIC, MS File ES-API, Pos, Scan, Frag: 70



Ion 1, MSD1 1, Target Mass 0 +H Positive, EIC=0.7:1.7



Integration Results for DAD1 A, Sig=214,4 Ref=off

RetTim	Width	Area	Height	Area%	MS (+)
1.27	0.02	2.79	-0.22	0.31	315
1.41	0.01	3.28	-0.19	0.37	321
1.44	0.01	1.33	-0.11	0.15	321
1.52	0.02	875.65	769.07	98.02	431
1.59	0.02	8.21	0.29	0.92	431
1.64	0.01	2.11	2.35	0.24	315

Integration Results for DAD1 B, Sig=254,4 Ref=off

RetTim	Width	Area	Height	Area%	MS (+)
1.17	0.02	0.67	0.02	0.20	315
1.29	0.02	0.69	0.75	0.20	315
1.32	0.02	0.60	0.62	0.18	315
1.34	0.02	0.55	0.57	0.16	315
1.42	0.02	1.06	1.17	0.31	321
1.45	0.01	0.86	0.95	0.25	321
1.49	0.01	0.05	0.10	0.02	315
1.52	0.02	332.94	293.76	98.28	431

1.57	0.01	0.47	0.56	0.14	431
1.64	0.02	0.85	0.89	0.25	445

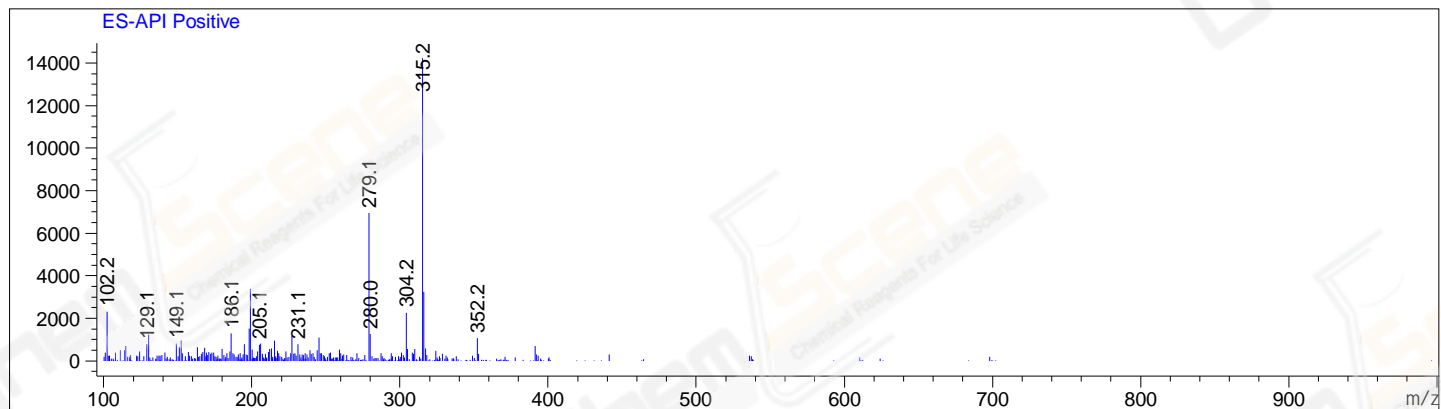
Integration Results for ELS1 A, ELSD Signal

RetTim	Width	Area	Height	Area%	MS (+)
1.59	0.05	44.86	13.90	100.00	431

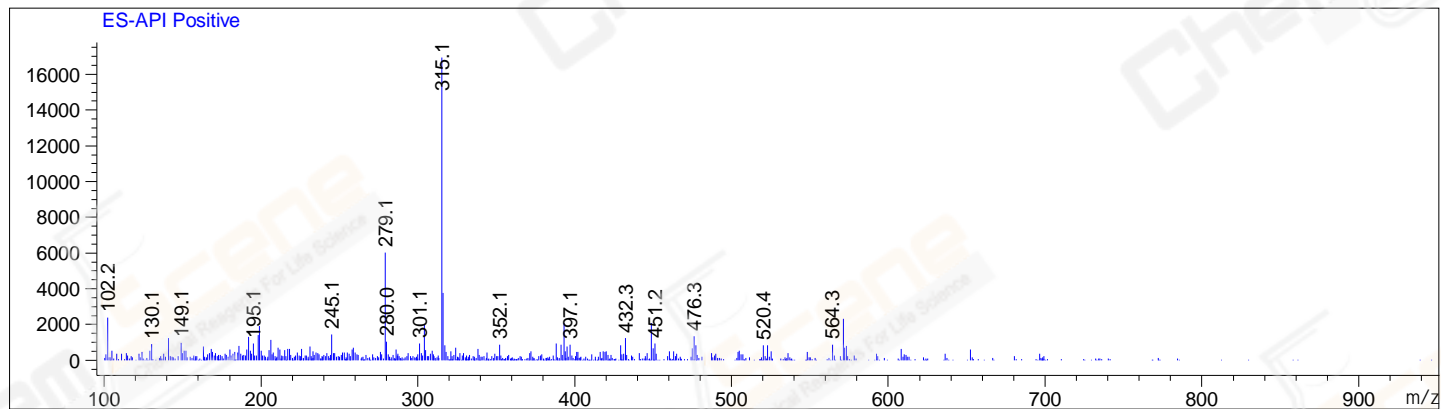
Integration Results for MSD1 TIC, MS File

RetTim	Width	Area	Height	Area%	MS (+)
0.41	0.09	64057.77	10846.17	1.78	315
1.34	0.07	116522.25	25544.28	3.25	315
1.55	0.06	3288471.00	844835.44	91.61	431
1.91	0.08	120544.47	21960.87	3.36	315

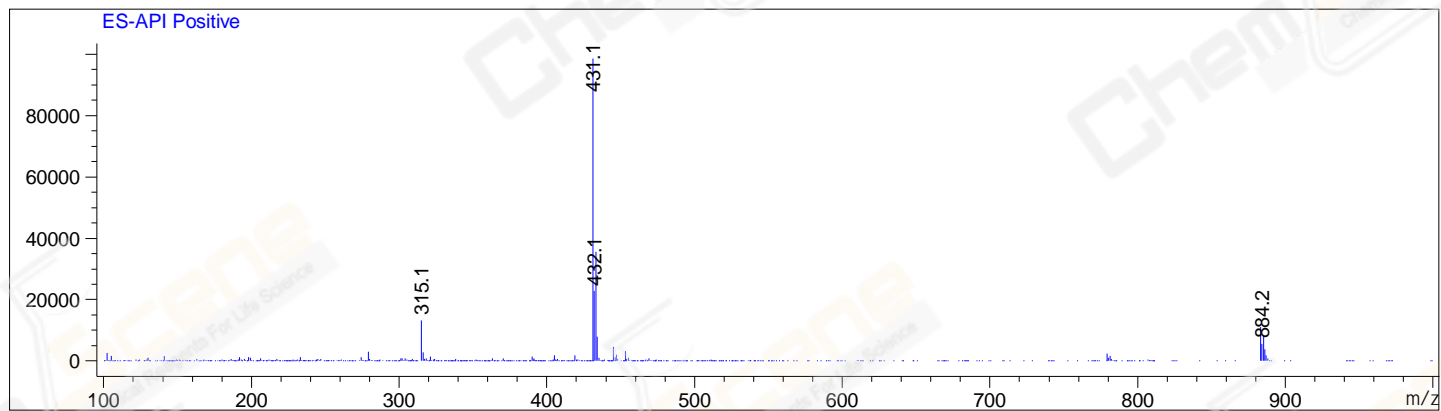
Ret. Time: 0.41 <<<< POSITIVE SPECTRA >>>>



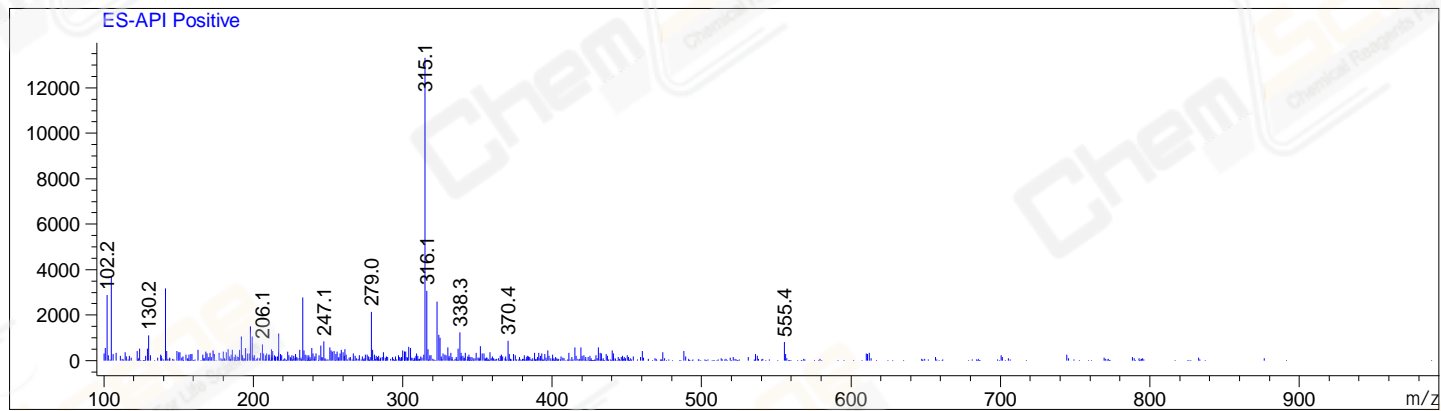
Ret. Time: 1.34



Ret. Time: 1.55



Ret. Time: 1.91



*** End of Report ***