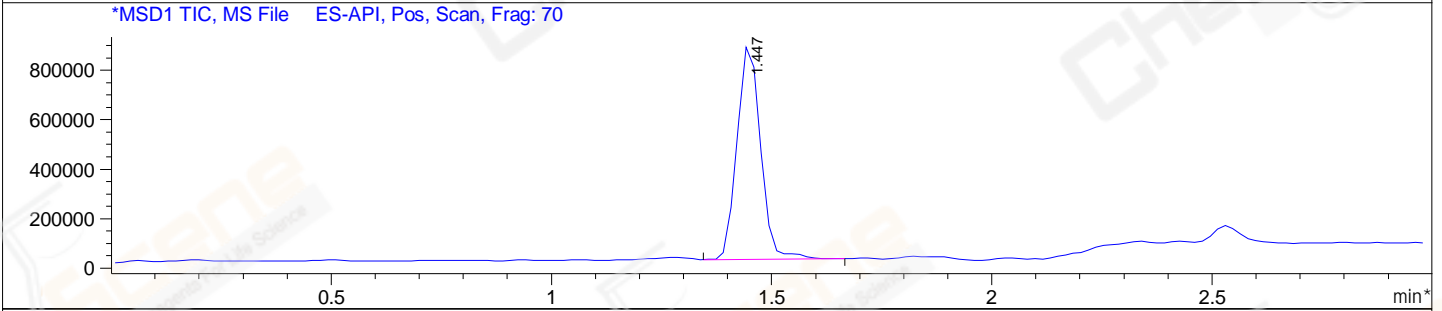
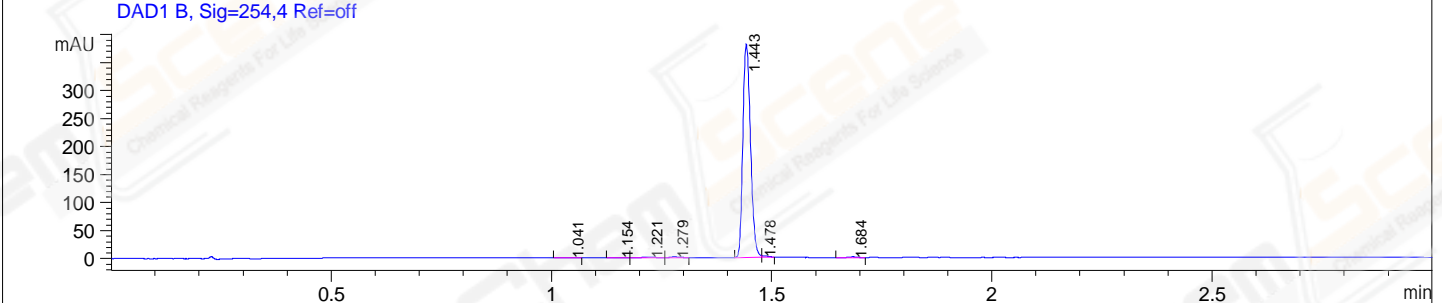
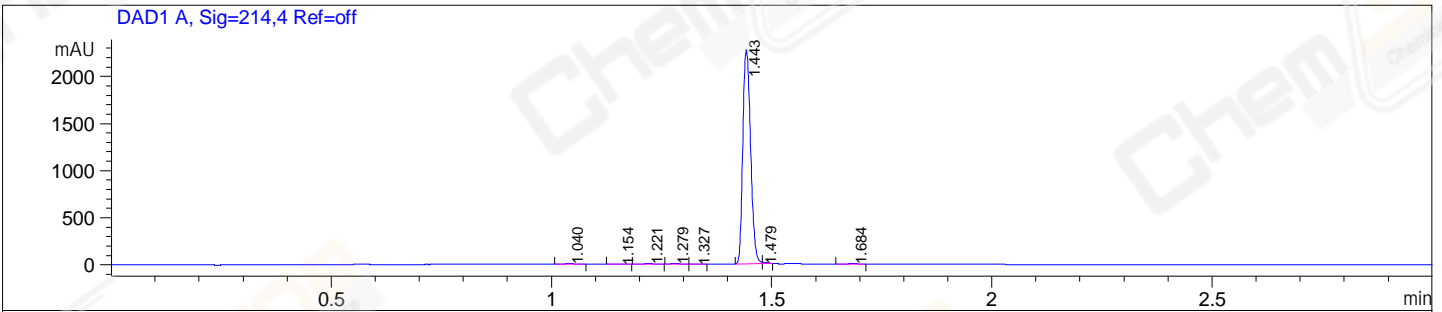


File E:\ChemStation\1\DATA\2023\2023-11\2023-11-21\CPK2023-N21-32005-UPLC-MS-10-020165.D
 Injection Date : 21-Nov-23, 16:15:59 Tgt Mass(EZX) :
 Sample Name : CPK2023-N21-32005 Location : P1-E-11
 Acq. Operator : LY_2278 Inj : 1
 Spec. Reported : MS Integration Inj Volume : 0.8 ul
 Acq. Method : E:\ChemStation\1\Methods\1-POS-UPLC3.0MIN(1.2)(150-1000).M
 Analysis Method : E:\CHEMSTATION\1\METHODS\1-POS-UPLC3.0MIN(1.2)(150-1000).M
 CAS NO. : 2118356-96-8 WalkUp method: '1-POS-3MIN' Project: CPK2023
 Method Info : Mobile Phase: A: water(0.01%TFA) B:ACN(0.01%TFA)
 Gradient: 5% to 95%B within 2.0 min
 Flow Rate :1.2ml/min
 Column :Shim-pack Scepter C18-120, 3.0*33mm,3um
 Oven Temperature : 45C



Integration Results for DAD1 A, Sig=214,4 Ref=off

RetTim	Width	Area	Height	Area%
1.04	0.02	12.35	10.83	0.43
1.15	0.02	1.93	1.32	0.07
1.22	0.02	9.97	6.27	0.35
1.28	0.02	9.91	7.91	0.35
1.33	0.02	1.48	1.45	0.05
1.44	0.02	2794.03	2272.13	98.03
1.48	0.01	10.98	15.19	0.39
1.68	0.02	9.55	8.41	0.34

Integration Results for DAD1 B, Sig=254,4 Ref=off

RetTim	Width	Area	Height	Area%
1.04	0.02	0.35	0.28	0.07
1.15	0.02	0.43	0.28	0.09
1.22	0.02	1.99	1.31	0.42
1.28	0.02	2.07	1.62	0.44
1.44	0.02	461.24	381.15	98.07
1.48	0.01	2.73	3.13	0.58

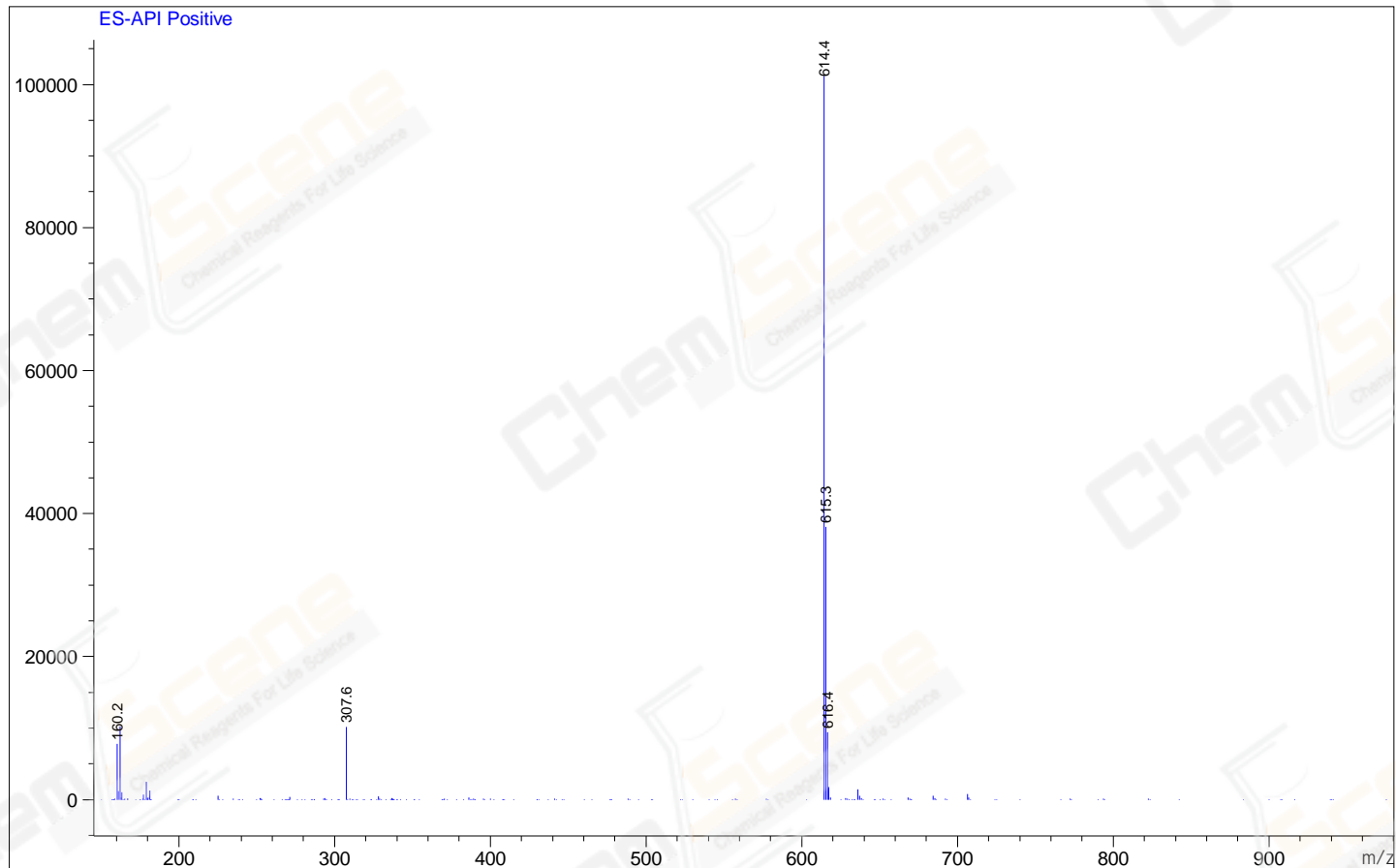
1.68 0.02 1.49 1.30 0.32

Integration Results for MSD1 TIC, MS File

RetTime	Width	Area	Height	Area%
1.45	0.06	3229016.75	871054.19	100.00

Ret. Time: 1.45

<<<< POSITIVE SPECTRA >>>>



*** End of Report ***