

File ..ata\2018\20180814\20180814-1\LP5852-005-1.D Tgt Mass (CHM):

Injection Date : 14 Aug 18 11:42 am +0800 Seq. Line : 19

Sample Name : LP5852-005-1 Location : P1-C-09

Acq. Operator : SYSTEM Inj : 1

Spec. Reported : MS Integration Inj Volume : 1 ul

Acq. Method : D:\LCMS03\Data\2018\20180814\20180814-1\1-POS-3MIN.M

Analysis Method : D:\LCMS03\Data\2018\20180814\20180814-1\1-POS-3MIN.M

Catalog No : CS-0047717 Batch#32191

Method Info : Mobile Phase: A: water(0.01%TFA) B:ACN(0.01%TFA)

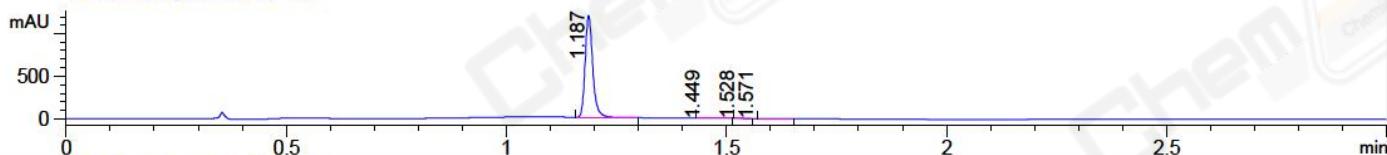
Gradient: 5% to 95%B within 1.3 min

Flow Rate :1.8ml/min

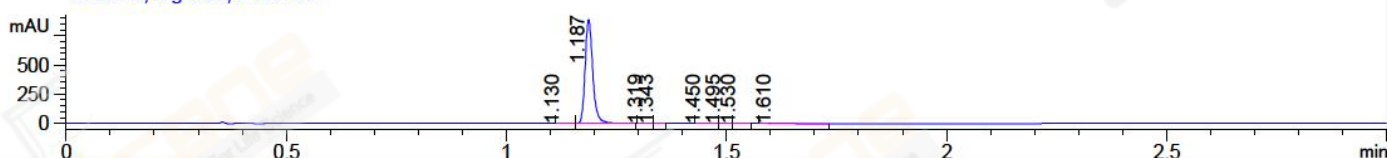
Column :SunFire C18, 4.6*50mm,3.5um A-RP-186

Oven Temperature : 45C

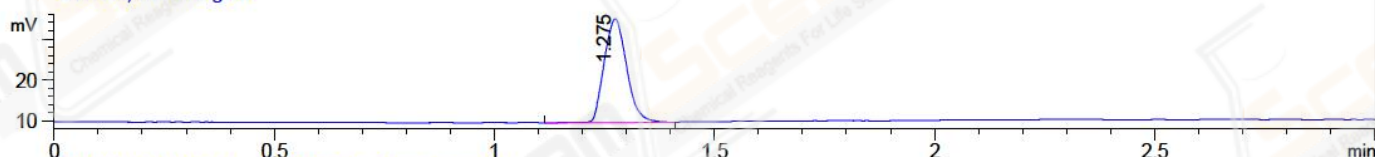
DAD1 A, Sig=214,4 Ref=off



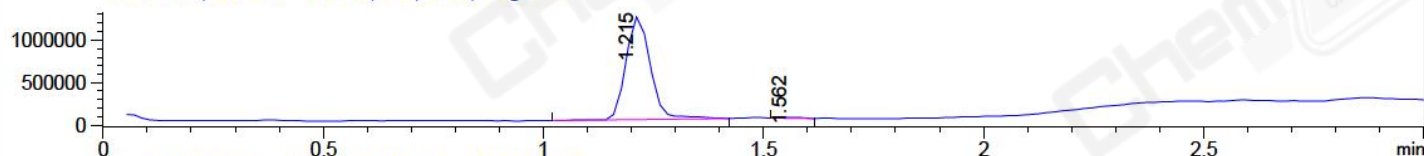
DAD1 B, Sig=254,4 Ref=off



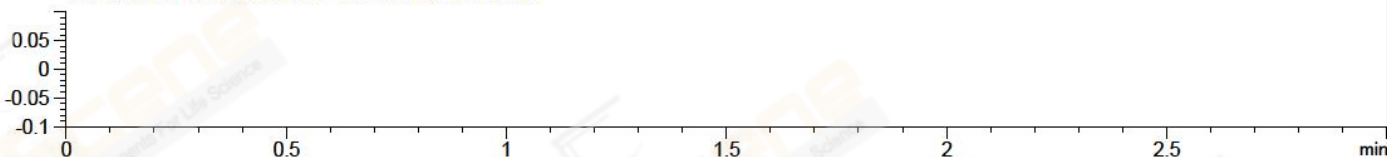
ELS1 A, ELSD Signal



MSD1 TIC, MS File ES-API, Pos, Scan, Frag: 70



Ion 1, MSD1 1, Target Mass 0 +H Positive, EIC=0.7:1.7



Integration Results for DAD1 A, Sig=214,4 Ref=off

RetTim	Width	Area	Height	Area%	MS (+)
1.19	0.02	1441.23	1197.05	99.63	378
1.45	0.02	3.08	1.76	0.21	233
1.53	0.02	0.83	0.75	0.06	233
1.57	0.03	1.45	-0.15	0.10	233

Integration Results for DAD1 B, Sig=254,4 Ref=off

RetTim	Width	Area	Height	Area%	MS (+)
1.13	0.02	0.25	0.22	0.02	378
1.19	0.02	1067.50	883.39	99.32	378
1.32	0.02	0.62	0.60	0.06	233
1.34	0.01	0.32	0.35	0.03	233
1.45	0.02	2.29	2.00	0.21	233
1.49	0.02	0.48	0.52	0.04	233
1.53	0.02	0.92	0.86	0.09	233
1.61	0.03	2.44	1.06	0.23	233

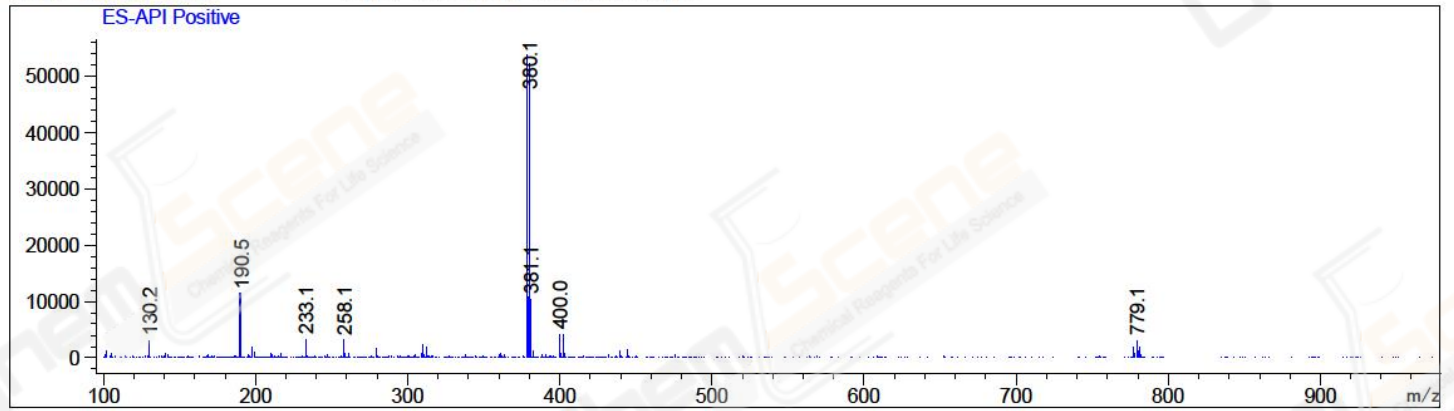
Integration Results for ELS1 A, ELSD Signal

RetTim	Width	Area	Height	Area%	MS (+)
1.28	0.06	89.79	25.26	100.00	378

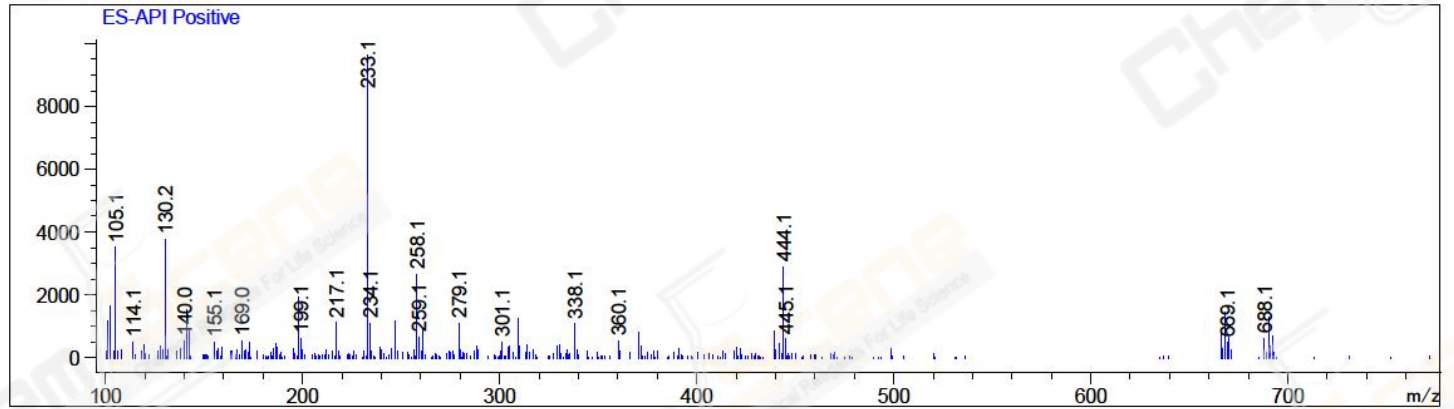
Integration Results for MSD1 TIC, MS File

RetTim	Width	Area	Height	Area%	MS (+)
1.21	0.06	4691277.00	1213504.88	99.35	378
1.56	0.05	30670.92	10338.54	0.65	233

Ret. Time: 1.21 <<<< POSITIVE SPECTRA >>>>



Ret. Time: 1.56



*** End of Report ***