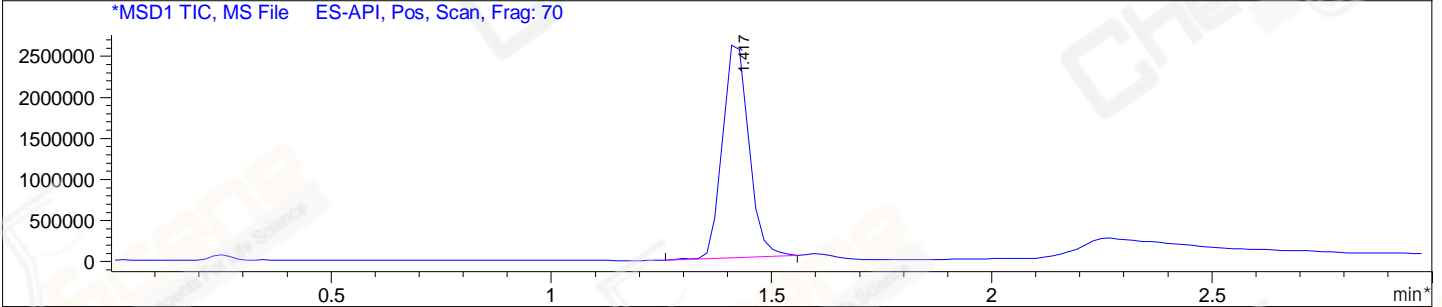
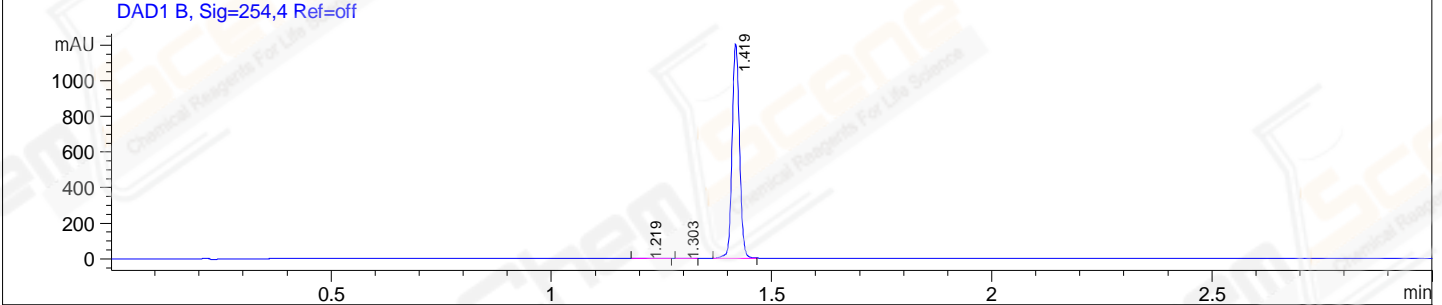
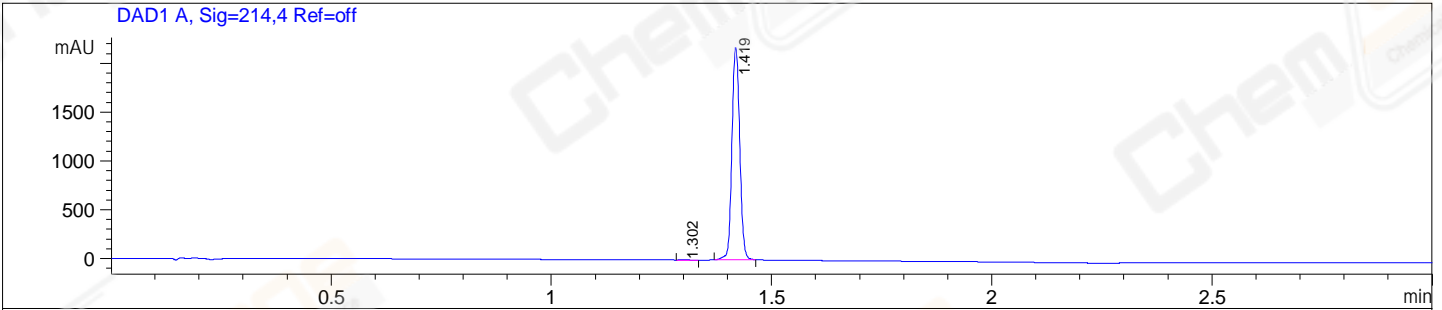


File E:\ChemStation\1\DATA\2023\2023-12\2023-12-27\BIZ2023-D27-SCH21-UPLC-MS-10-023249.D
 Injection Date : 27-Dec-23, 14:03:27 Tgt Mass(EZX) :
 Sample Name : BIZ2023-D27-SCH21 Location : P2-A-10
 Acq. Operator : LY_2278 Inj : 1
 Spec. Reported : MS Integration Inj Volume : 3 ul
 Acq. Method : E:\ChemStation\1\Methods\1-POS-UPLC3.0MIN(1.2)(150-2000).M
 Analysis Method : E:\CHEMSTATION\1\METHODS\1-POS-UPLC3.0MIN(1.2)(150-2000).M
 CAS NO. : 2170484-59-8 WalkUp method: '1-POS-3MIN-(150-2000)' Project: BIZ2023
 Method Info : Mobile Phase: A: water(0.01%TFA) B:ACN(0.01%TFA)
 Gradient: 5% to 95%B within 2.0 min
 Flow Rate :1.2ml/min
 Column :Shim-pack Scepter C18-120, 3.0*33mm,3um
 Oven Temperature : 45C



Integration Results for DAD1 A, Sig=214,4 Ref=off

RetTim	Width	Area	Height	Area%
1.30	0.02	2.30	1.90	0.09
1.42	0.02	2684.95	2174.98	99.91

Integration Results for DAD1 B, Sig=254,4 Ref=off

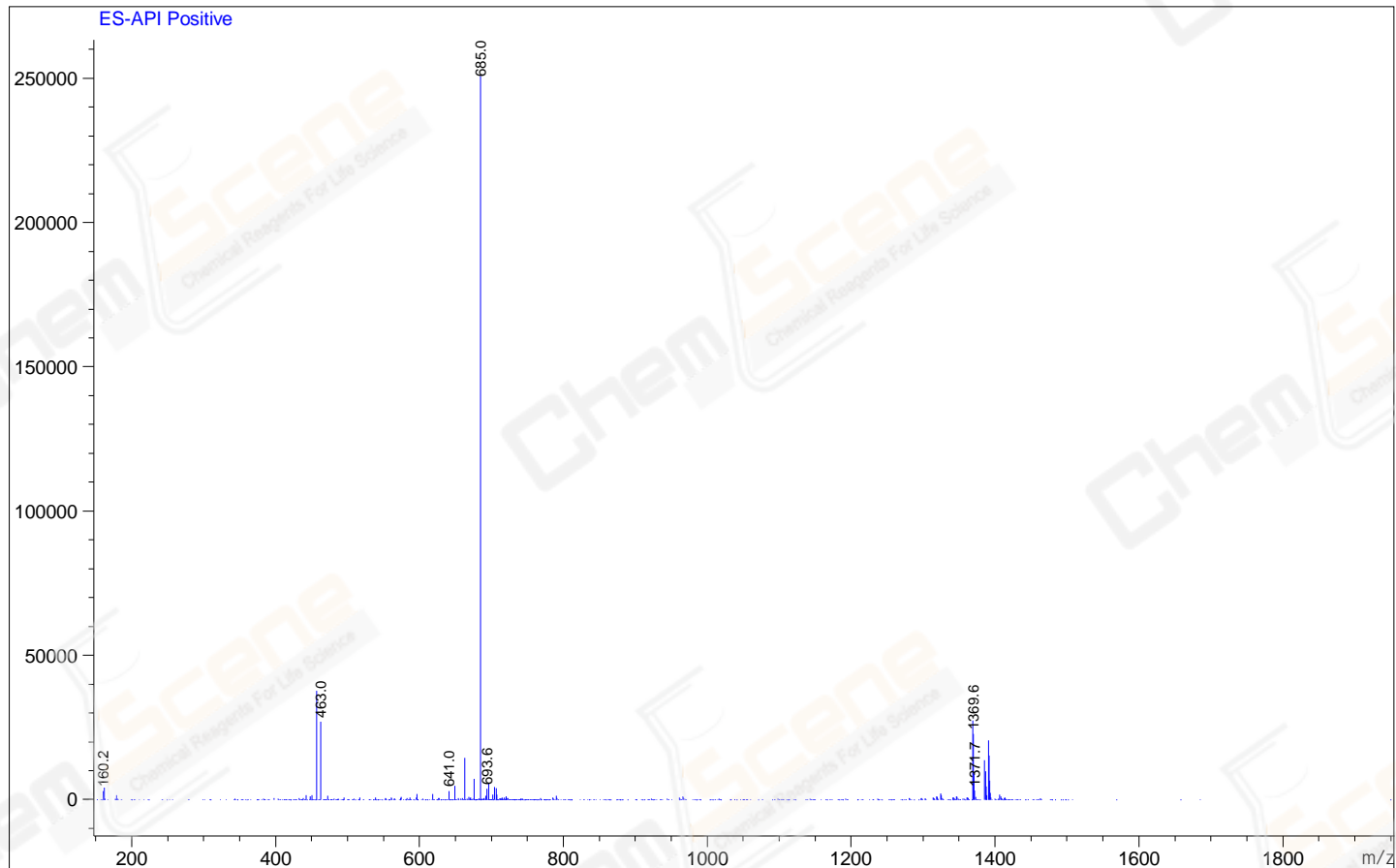
RetTim	Width	Area	Height	Area%
1.22	0.03	0.80	0.45	0.06
1.30	0.02	0.73	0.59	0.05
1.42	0.02	1408.55	1205.10	99.89

Integration Results for MSD1 TIC, MS File

RetTim	Width	Area	Height	Area%
1.42	0.10	10833825.00	2695558.25	100.00

Ret. Time: 1.42

<<<< POSITIVE SPECTRA >>>>



*** End of Report ***