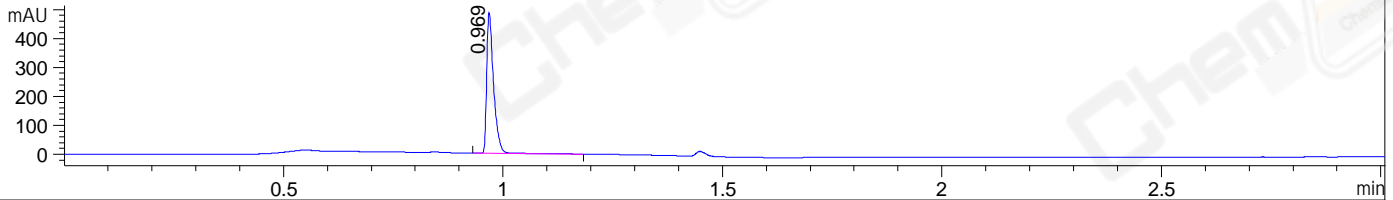
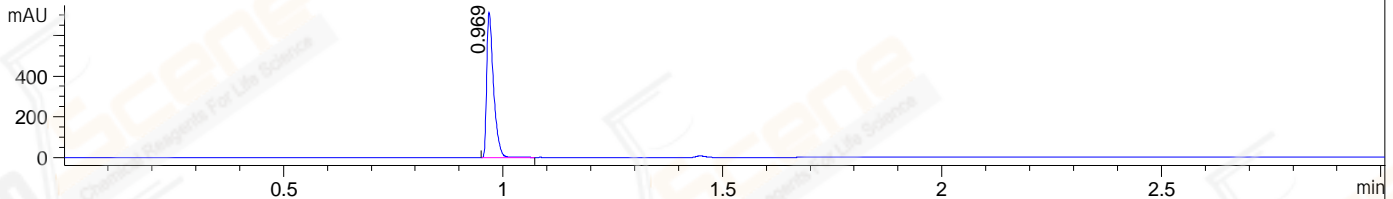


File ..\2023-12-19\ZX34843-1-P-UPLC-MS-09-046207.D Tgt Mass (EZX):  
 Injection Date : 19-Dec-23, 16:16:32 Seq. Line : 0  
 Sample Name : ZX34843-1-P Location : P1-B-04  
 Acq. Operator : admin Inj : 1  
 Spec. Reported : MS Integration Inj Volume : 0.2 ul  
 Acq. Method : D:\data\1\Methods\1-POS-3MIN(0.6min BQ) C1.M  
 Analysis Method : D:\data\1\Methods\1-POS-3MIN(0.6min BQ) C1.M  
 CAS NO. : 1109283-93-3 WalkUp method: '0.6MIN(BQ)' Leader: HCY  
 Method Info : Mobile Phase: A: water(0.01%TFA) B:ACN(0.01%TFA)  
 Gradient: 5% to95%B within1.3 min  
 Flow Rate :1.8ml/min  
 Column :Shim-pack Scepter C18-120, 4.5\*50mm,3um A-RP-1243  
 Oven Temperature : 45C

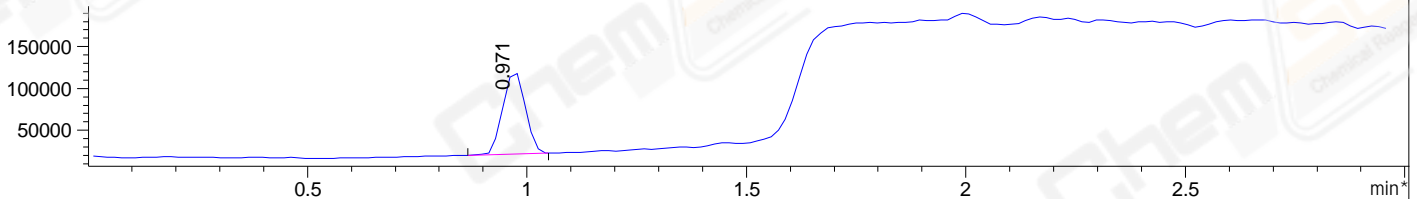
DAD1 A, Sig=214,4 Ref=off



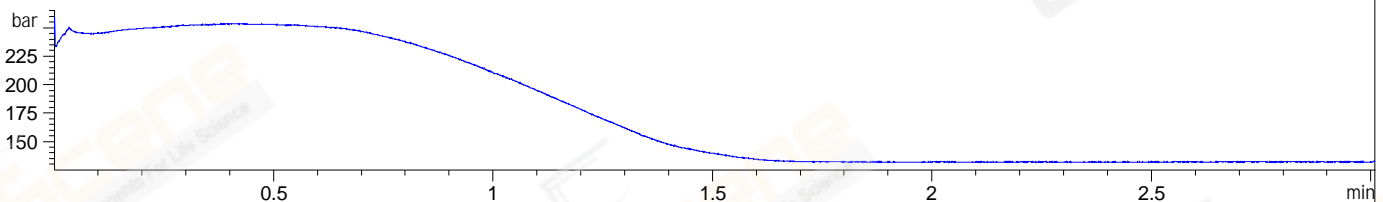
DAD1 B, Sig=254,4 Ref=off



\*MSD1 TIC, MS File ES-API, Pos, Scan, Frag: 70



PMP1, PMP1B, Pressure



Integration Results for DAD1 A, Sig=214,4 Ref=off

RetTim	Width	Area	Height	Area%	MS (+)
0.97	0.02	523.80	483.41	100.00	130

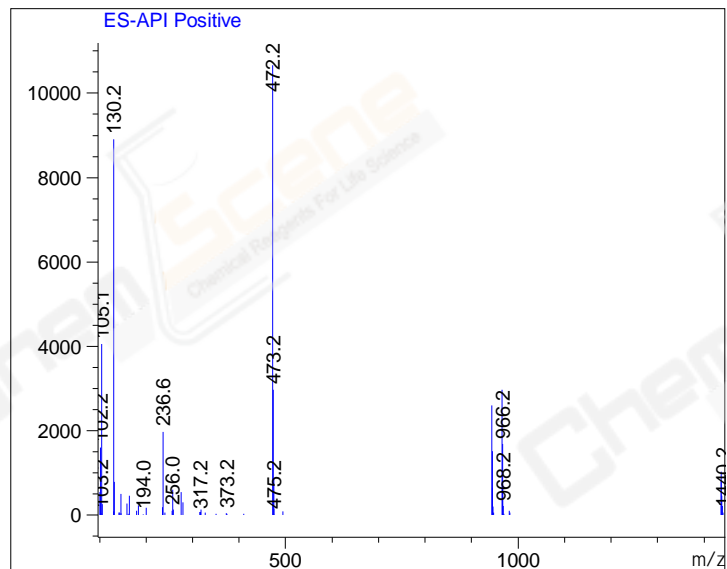
Integration Results for DAD1 B, Sig=254,4 Ref=off

RetTim	Width	Area	Height	Area%	MS (+)
0.97	0.02	760.94	706.26	100.00	130

Integration Results for MSD1 TIC, MS File

RetTim	Width	Area	Height	Area%	MS (+)
0.97	0.06	346676.59	98472.70	100.00	472

Ret. Time: 0.97 <<<< POSITIVE SPECTRA >>>>



\*\*\* End of Report \*\*\*