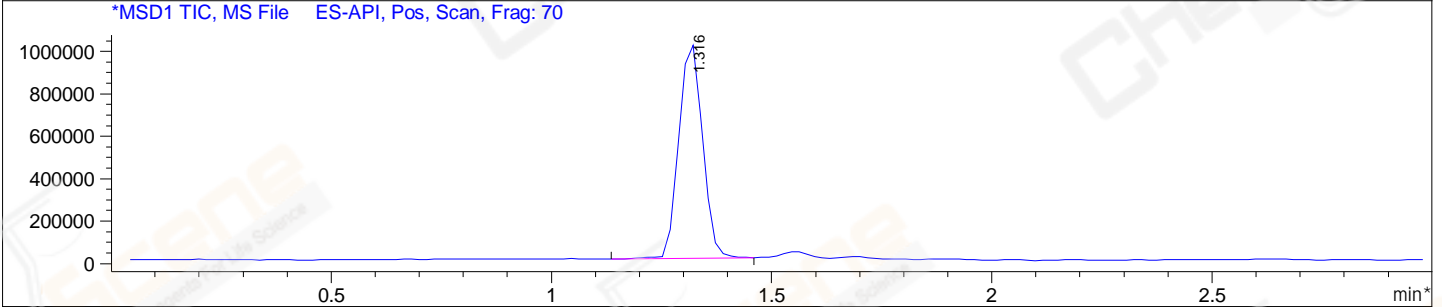
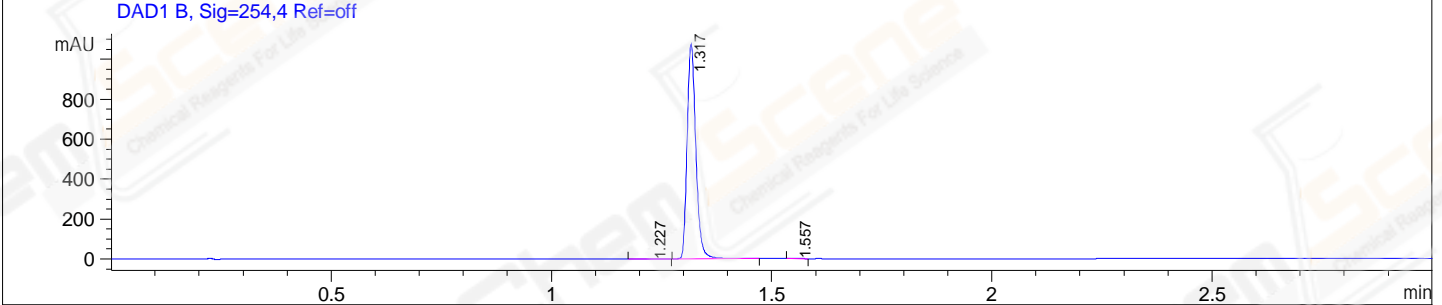
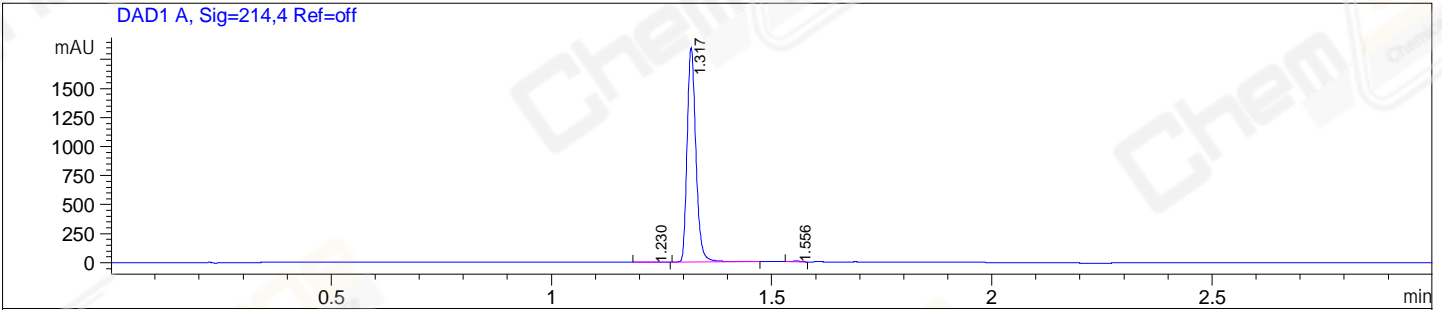


File E:\ChemStation\1\DATA\2024\2024-01\2024-01-08\BIZ2024-104-WLQ39-UPLC-MS-10-024016.D
 Injection Date : 08-Jan-24, 09:59:19 Tgt Mass(EZX) :
 Sample Name : BIZ2024-104-WLQ39 Location : P1-A-03
 Acq. Operator : LY_2278 Inj : 1
 Spec. Reported : MS Integration Inj Volume : 0.8 ul
 Acq. Method : E:\ChemStation\1\Methods\1-POS-UPLC3.0MIN(1.2)(150-1000).M
 Analysis Method : E:\CHEMSTATION\1\METHODS\1-POS-UPLC3.0MIN(1.2)(150-1000).M
 CAS NO. : 627518-40-5 WalkUp method: '1-POS-3MIN' Project: BIZ2024
 Method Info : Mobile Phase: A: water(0.01%TFA) B:ACN(0.01%TFA)
 Gradient: 5% to 95%B within 2.0 min
 Flow Rate :1.2ml/min
 Column :Shim-pack Scepter C18-120, 3.0*33mm,3um
 Oven Temperature : 45C



Integration Results for DAD1 A, Sig=214,4 Ref=off

RetTim	Width	Area	Height	Area%
1.23	0.03	2.30	1.16	0.09
1.32	0.02	2558.24	1840.64	99.57
1.56	0.02	8.65	6.89	0.34

Integration Results for DAD1 B, Sig=254,4 Ref=off

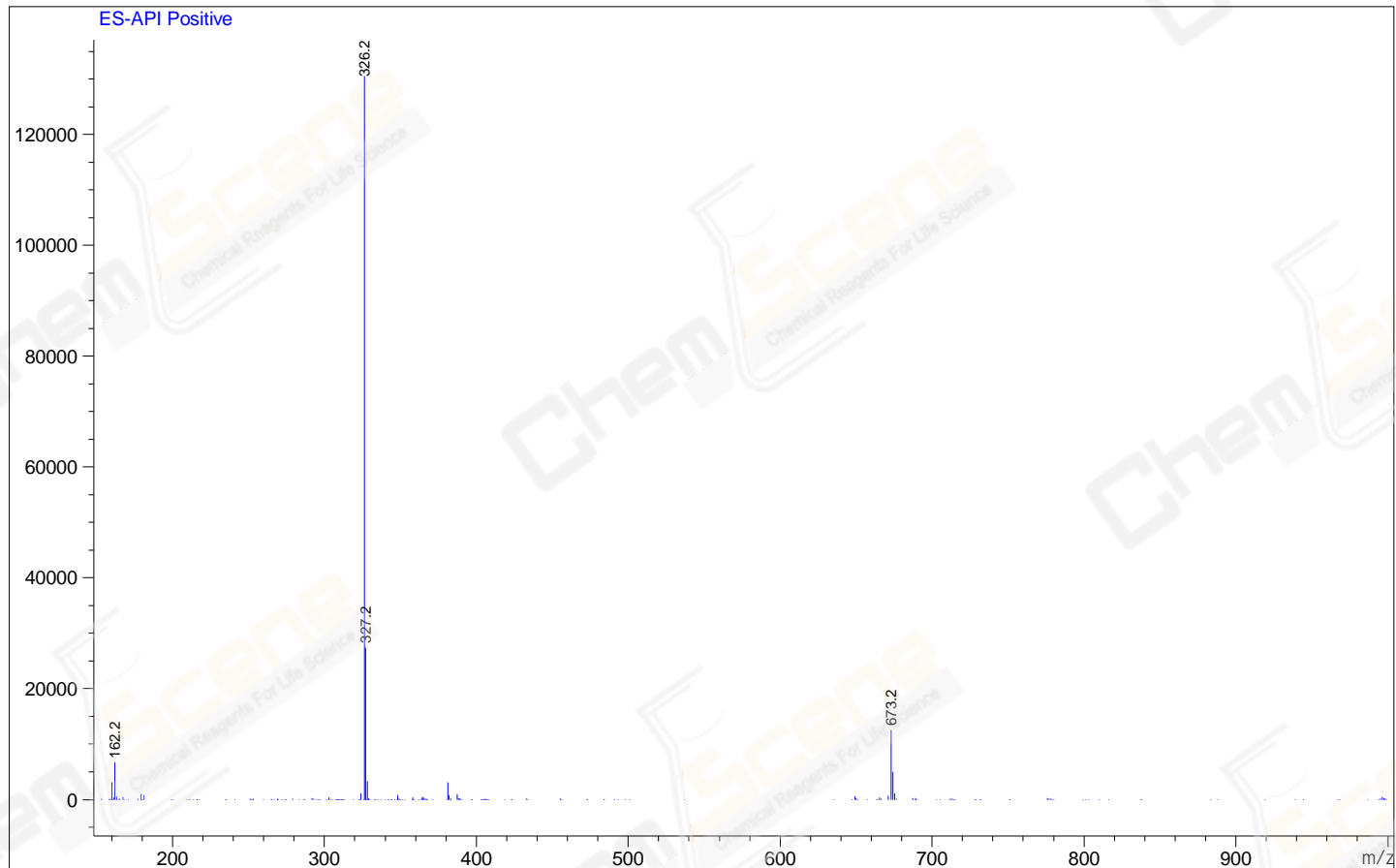
RetTim	Width	Area	Height	Area%
1.23	0.03	1.28	0.58	0.09
1.32	0.02	1479.77	1072.13	99.67
1.56	0.02	3.69	3.02	0.25

Integration Results for MSD1 TIC, MS File

RetTim	Width	Area	Height	Area%
1.32	0.06	3787330.50	1019814.19	100.00

Ret. Time: 1.32

<<<< POSITIVE SPECTRA >>>>



*** End of Report ***