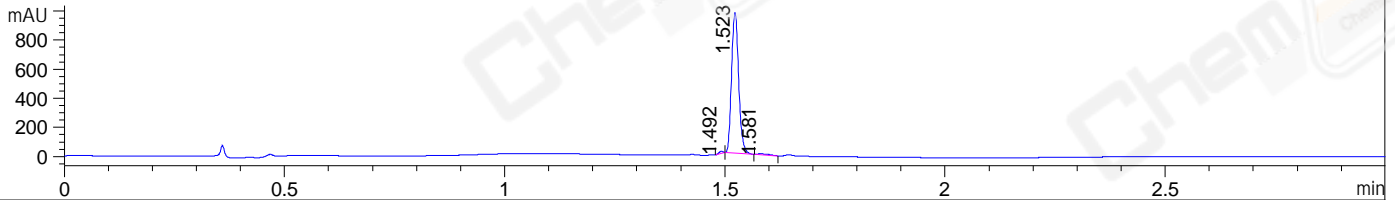
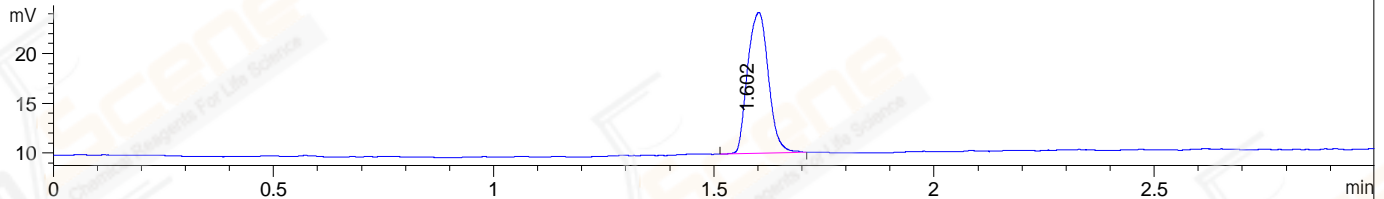


File ..ata\2018\20180903\20180903\LYF5633-043-P2.D Tgt Mass (CHM):
Injection Date : 3 Sep 18 9:55 am +0800 Seq. Line : 19
Sample Name : LYF5633-043-P2 Location : P1-D-04
Acq. Operator : SYSTEM Inj : 1
Spec. Reported : MS Integration Inj Volume : 1 ul
Acq. Method : D:\LCMS03\Data\2018\20180903\20180903\1-POS-3MIN.M
Analysis Method : D:\LCMS03\Data\2018\20180903\20180903\1-POS-3MIN.M
CAS NO. : 1698055-85-4
Method Info : Mobile Phase: A: water(0.01%TFA) B:ACN(0.01%TFA)
Gradient: 5% to 95%B within 1.3 min
Flow Rate :1.8ml/min
Column :SunFire C18, 4.6*50mm,3.5um A-RP-186
Oven Temperature : 45C

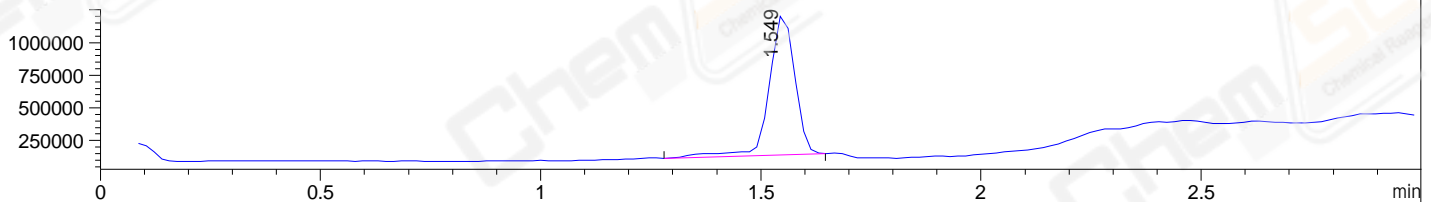
DAD1 A, Sig=214,4 Ref=off



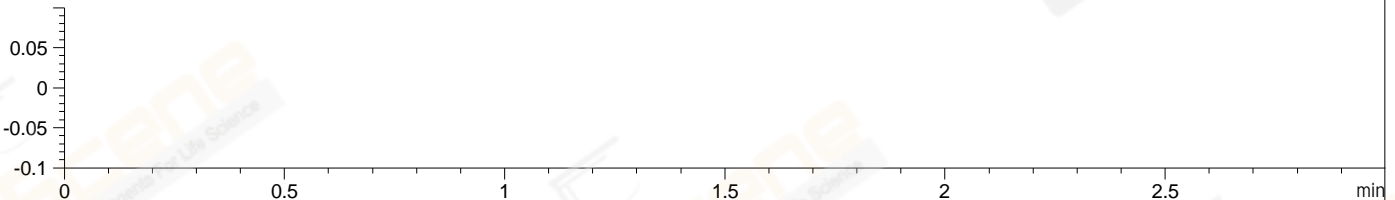
ELS1 A, ELSD Signal



MSD1 TIC, MS File ES-API, Pos, Scan, Frag: 70



Ion 1, MSD1 1, Target Mass 0 +H Positive, EIC=0.7:1.7



Integration Results for DAD1 A, Sig=214,4 Ref=off

RetTim	Width	Area	Height	Area%	MS (+)
1.49	0.01	9.11	13.08	0.82	233
1.52	0.02	1084.47	965.33	98.01	431
1.58	0.02	12.86	8.13	1.16	431

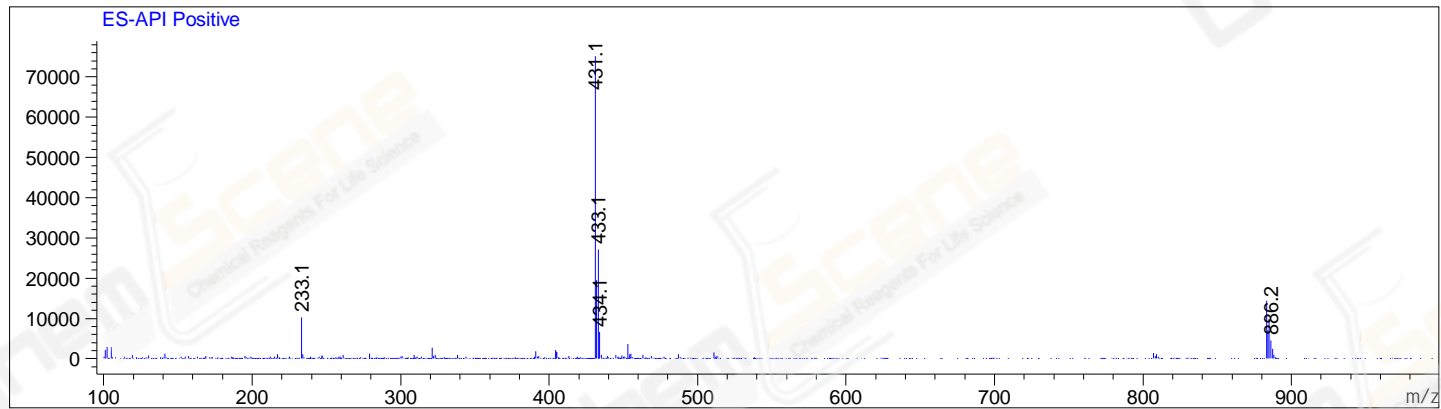
Integration Results for ELS1 A, ELSD Signal

RetTim	Width	Area	Height	Area%	MS (+)
1.60	0.05	46.69	14.16	100.00	431

Integration Results for MSD1 TIC, MS File

RetTim	Width	Area	Height	Area%	MS (+)
1.55	0.06	4301812.50	1080580.63	100.00	431

Ret. Time: 1.55 <<<< POSITIVE SPECTRA >>>>



*** End of Report ***