

File ..ata\2018\20180903\20180903\LYF5633-043-P1.D Tgt Mass (CHM):

Injection Date : 3 Sep 18 9:59 am +0800 Seq. Line : 20

Sample Name : LYF5633-043-P1 Location : P1-D-05

Acq. Operator : SYSTEM Inj : 1

Spec. Reported : MS Integration Inj Volume : 1 ul

Acq. Method : D:\LCMS03\Data\2018\20180903\20180903\1-POS-3MIN.M

Analysis Method : D:\LCMS03\Data\2018\20180903\20180903\1-POS-3MIN.M

Catalog No : CS-0035117 Batch#32553

Method Info : Mobile Phase: A: water(0.01%TFA) B:ACN(0.01%TFA)

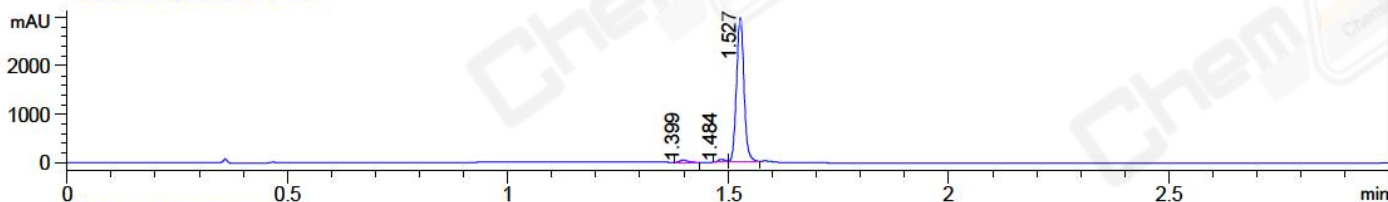
Gradient: 5% to 95%B within 1.3 min

Flow Rate :1.8ml/min

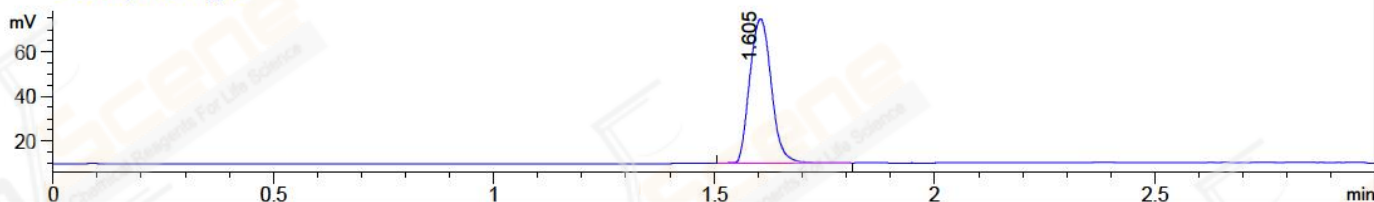
Column :SunFire C18, 4.6*50mm,3.5um A-RP-186

Oven Temperature : 45C

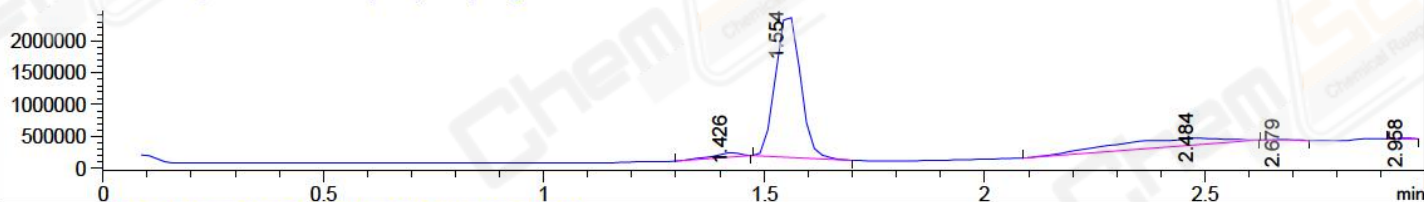
DAD1 A, Sig=214,4 Ref=off



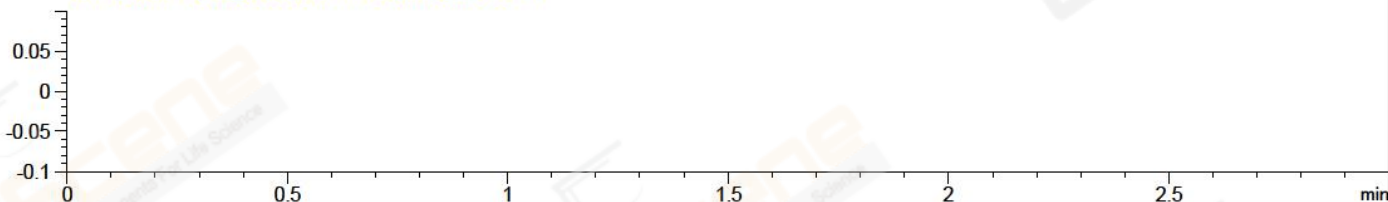
ELS1 A, ELSD Signal



MSD1 TIC, MS File ES-API, Pos, Scan, Frag: 70



Ion 1, MSD1 1, Target Mass 0 +H Positive, EIC=0.7:1.7



Integration Results for DAD1 A, Sig=214,4 Ref=off

RetTim	Width	Area	Height	Area%	MS (+)
1.40	0.02	52.39	43.96	1.47	413
1.48	0.02	45.75	47.62	1.28	431
1.53	0.02	3473.54	2958.05	97.25	431

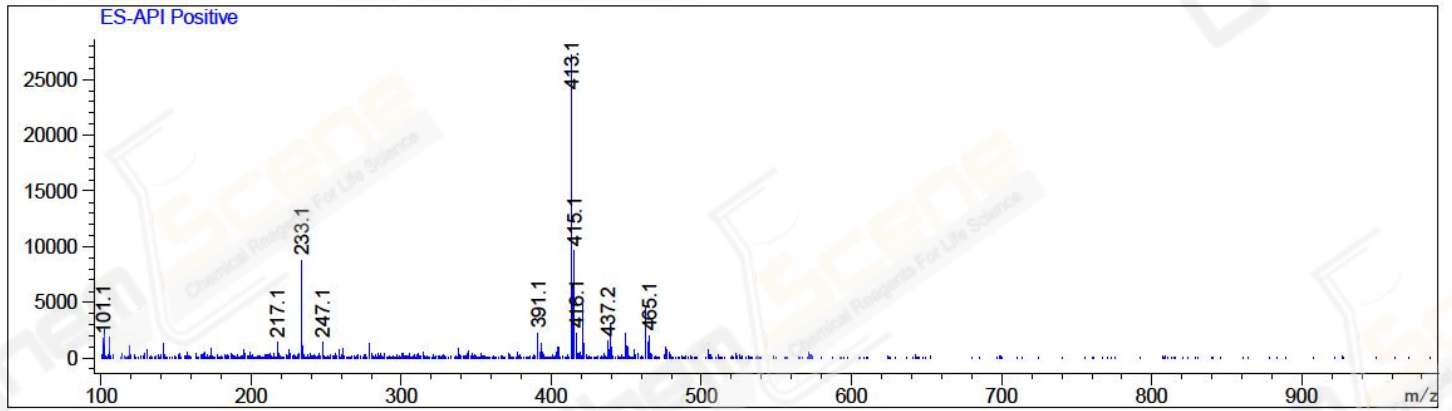
Integration Results for ELS1 A, ELSD Signal

RetTim	Width	Area	Height	Area%	MS (+)
1.61	0.05	221.70	64.91	100.00	431

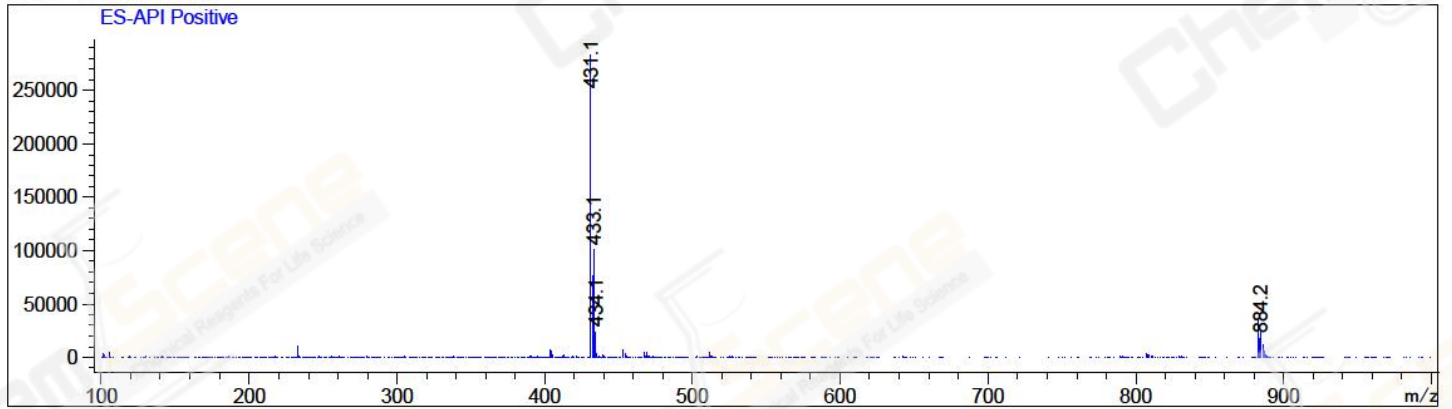
Integration Results for MSD1 TIC, MS File

RetTim	Width	Area	Height	Area%	MS (+)
1.43	0.06	285254.63	70347.70	2.52	413
1.55	0.06	8805690.00	2283844.25	77.66	431
2.48	0.26	2173654.50	102965.43	19.17	105
2.68	0.06	50023.39	14222.68	0.44	105
2.96	0.04	23648.52	10499.99	0.21	105

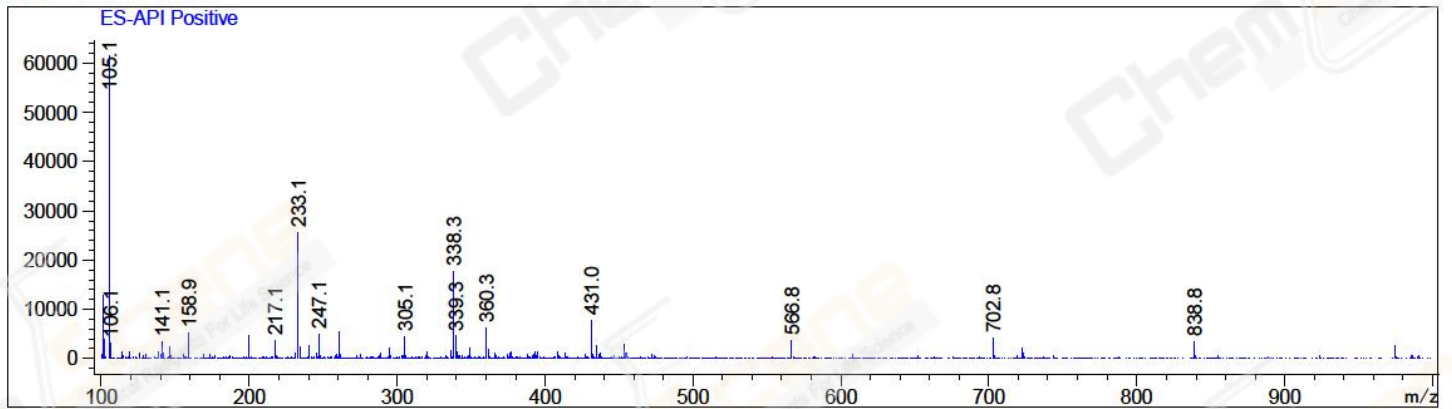
Ret. Time: 1.43 <<<< POSITIVE SPECTRA >>>>



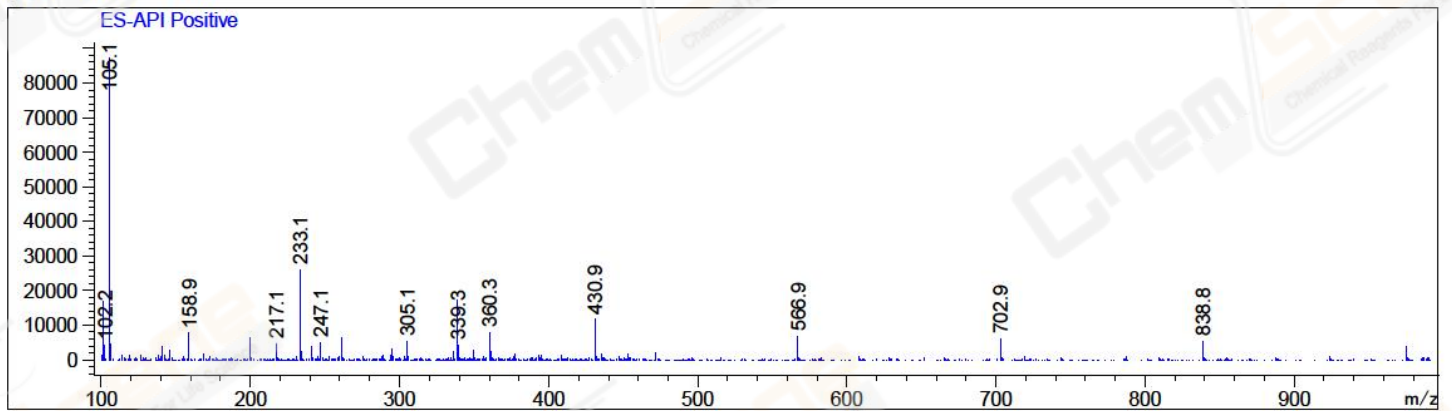
Ret. Time: 1.55



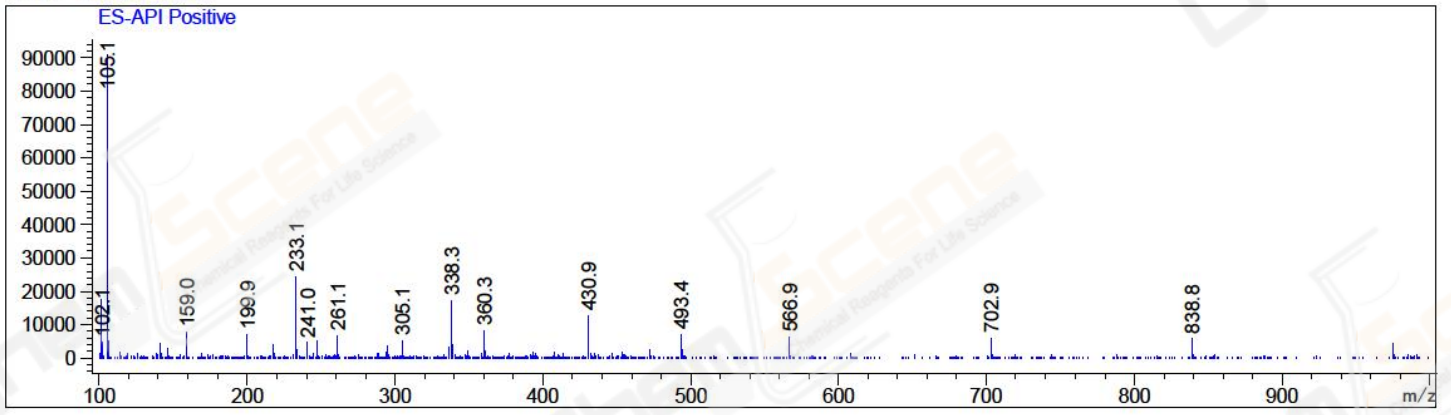
Ret. Time: 2.48



Ret. Time: 2.68



Ret. Time: 2.96



*** End of Report ***