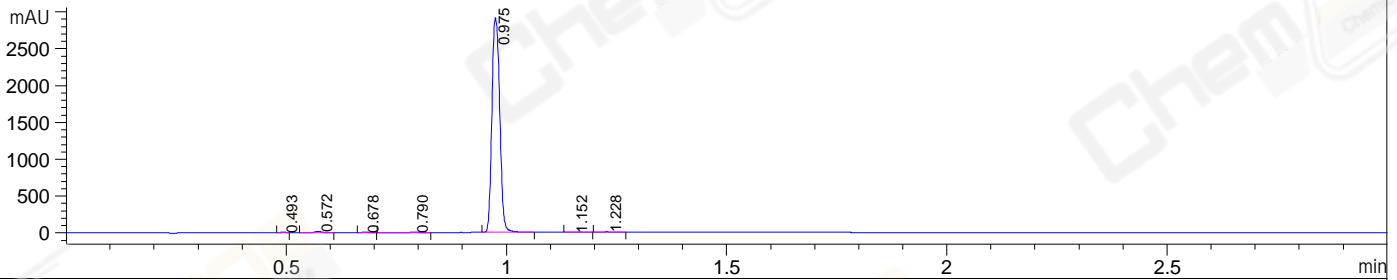
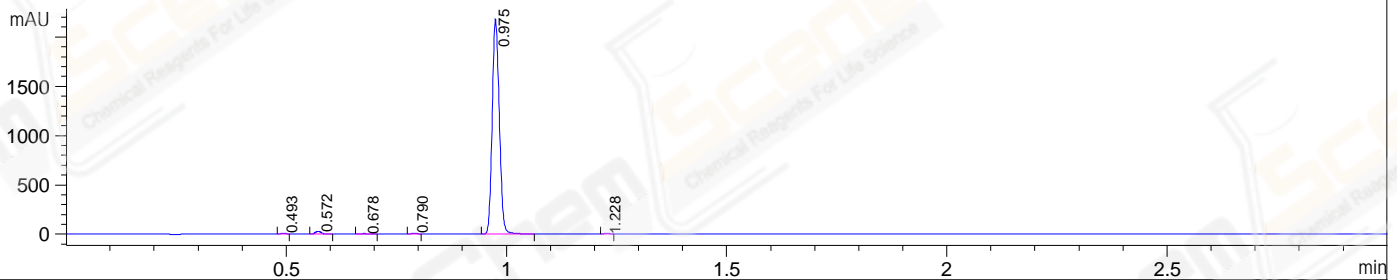


File E:\ChemStation\1\DATA\2023\2023-11\2023-11-21\CPK2023-N21-32626-UPLC-MS-10-020152.D  
 Injection Date : 21-Nov-23, 15:17:25 Tgt Mass(EZX) :  
 Sample Name : CPK2023-N21-32626 Location : P1-D-10  
 Acq. Operator : LY\_2278 Inj : 1  
 Spec. Reported : MS Integration Inj Volume : 0.8 ul  
 Acq. Method : E:\ChemStation\1\Methods\1-POS-UPLC3.0MIN(1.2)(150-1000).M  
 Analysis Method : E:\CHEMSTATION\1\METHODS\1-POS-UPLC3.0MIN(1.2)(150-1000).M  
 CAS NO. : 943540-74-7 WalkUp method: '1-POS-3MIN' Project: CPK2023  
 Method Info : Mobile Phase: A: water(0.01%TFA) B:ACN(0.01%TFA)  
 Gradient: 5% to 95%B within 2.0 min  
 Flow Rate :1.2ml/min  
 Column :Shim-pack Scepter C18-120, 3.0\*33mm,3um  
 Oven Temperature : 45C

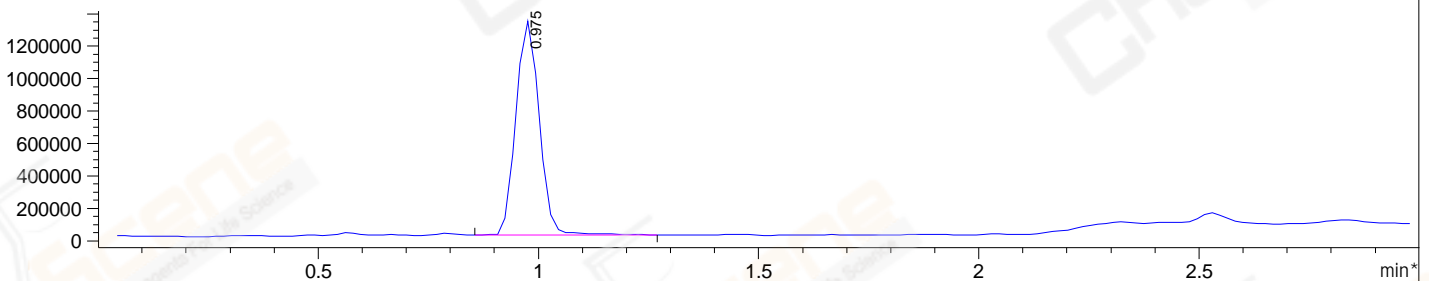
DAD1 A, Sig=214,4 Ref=off



DAD1 B, Sig=254,4 Ref=off



\*MSD1 TIC, MS File ES-API, Pos, Scan, Frag: 70



Integration Results for DAD1 A, Sig=214,4 Ref=off

RetTim	Width	Area	Height	Area%
0.49	0.02	6.45	5.90	0.18
0.57	0.02	16.51	16.10	0.45
0.68	0.02	3.71	3.78	0.10
0.79	0.02	5.12	4.13	0.14
0.98	0.02	3586.71	2912.37	98.76
1.15	0.03	2.93	1.55	0.08
1.23	0.02	10.43	7.82	0.29

Integration Results for DAD1 B, Sig=254,4 Ref=off

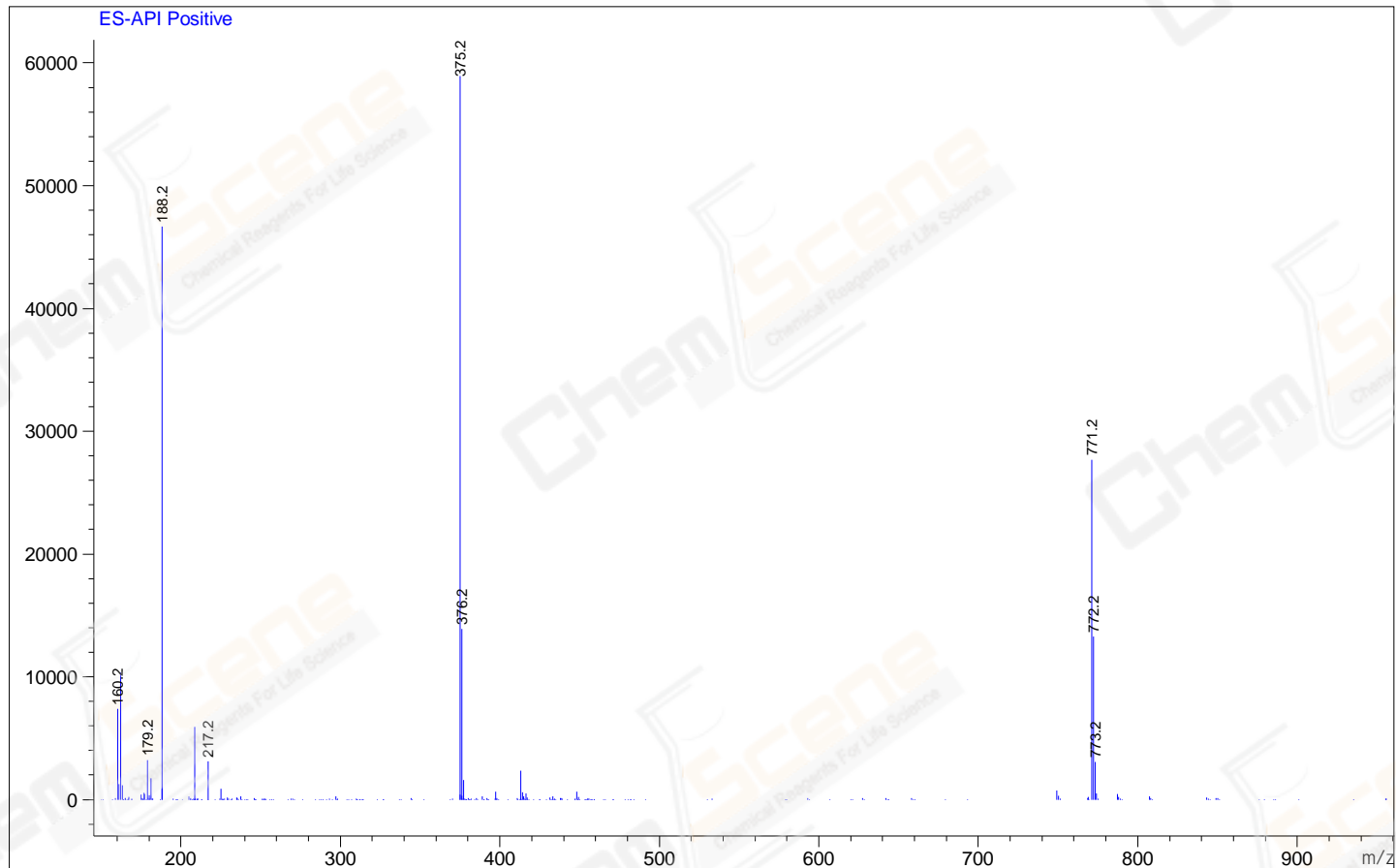
RetTim	Width	Area	Height	Area%
0.49	0.01	7.39	8.76	0.30
0.57	0.02	26.11	27.58	1.05
0.68	0.02	4.63	4.53	0.19
0.79	0.02	6.21	6.36	0.25
0.98	0.02	2432.31	2178.01	98.02
1.23	0.02	4.78	4.56	0.19

## Integration Results for MSD1 TIC, MS File

RetTim	Width	Area	Height	Area%
0.98	0.06	4867852.00	1318941.63	100.00

Ret. Time: 0.98

<<<< POSITIVE SPECTRA >>>>



\*\*\* End of Report \*\*\*