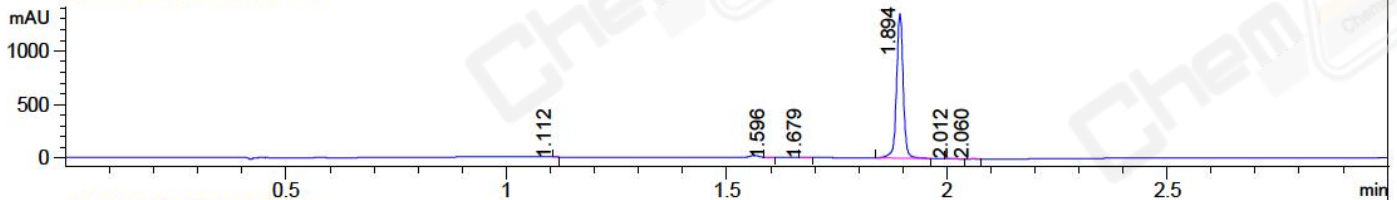
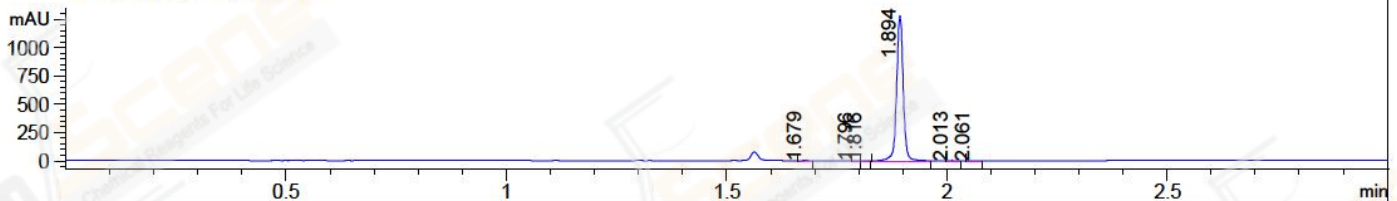


File ..1\DATA\2018\20180919\392\BIZ2018-919-CXL2.D Tgt Mass (CHM):
 Injection Date : 19 Sep 18 5:55 pm +0800 Seq. Line : 20
 Sample Name : BIZ2018-919-CXL2 Location : P1-C-04
 Acq. Operator : LQ_1052 Inj : 1
 Spec. Reported : MS Integration Inj Volume : 1 ul
 Acq. Method : D:\Chem32\1\data\2018\20180919\392\1-POS-3MIN-1.M
 Analysis Method : D:\CHEM32\1\DATA\2018\20180919\392\1-POS-3MIN-1.M
 Catalog No : CS-0063874 Batch#32801 A-RP-314
 Method Info : Mobile Phase: A: water(0.01%TFA) B:ACN(0.01%TFA)
 Gradient: 5% to 95%B within 1.3 min
 Flow Rate :1.8ml/min
 Column :SunFire C18, 4.6*50mm,3.5um A-RP-314
 Oven Temperature : 45□

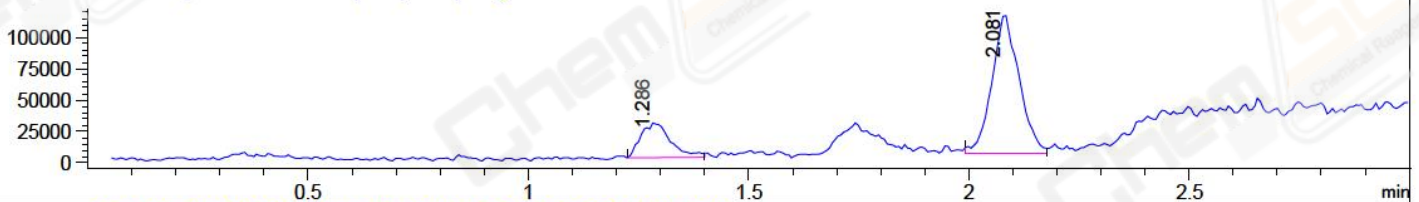
DAD1 B, Sig=214,4 Ref=off



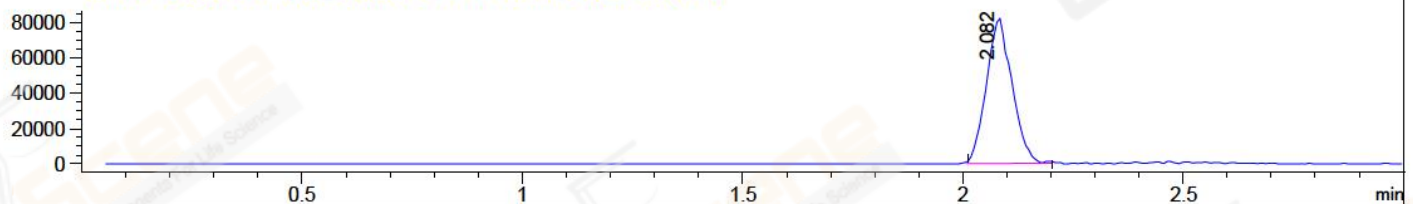
DAD1 C, Sig=254,4 Ref=off



MSD1 TIC, MS File ES-API, Pos, Scan, Frag: 70



Ion 417.1, MSD1 417.1, Target Mass 416.1 +H Positive, EIC=416.8:417.8



Integration Results for DAD1 B, Sig=214,4 Ref=off

RetTim	Width	Area	Height	Area%	MS (+)
1.11	0.01	0.55	0.88	0.04	ND
1.60	0.01	0.46	0.65	0.03	ND
1.68	0.01	1.92	2.21	0.14	345
1.89	0.02	1409.60	1349.08	99.37	ND
2.01	0.02	3.96	4.16	0.28	417
2.06	0.01	1.99	2.33	0.14	417

Integration Results for DAD1 C, Sig=254,4 Ref=off

RetTim	Width	Area	Height	Area%	MS (+)
1.68	0.02	1.85	1.95	0.14	345
1.80	0.01	0.37	0.45	0.03	345
1.82	0.01	1.08	1.30	0.08	345
1.89	0.02	1336.66	1286.16	99.43	345
2.01	0.02	2.96	3.25	0.22	417
2.06	0.01	1.46	1.69	0.11	417

Integration Results for MSD1 TIC, MS File

RetTim	Width	Area	Height	Area%	MS (+)
1.29	0.06	129637.27	27997.39	21.43	183
2.08	0.06	475295.84	111436.84	78.57	417

Ret. Time: 1.29

<<<< POSITIVE SPECTRA >>>>

ES-API Positive



Ret. Time: 2.08

ES-API Positive

