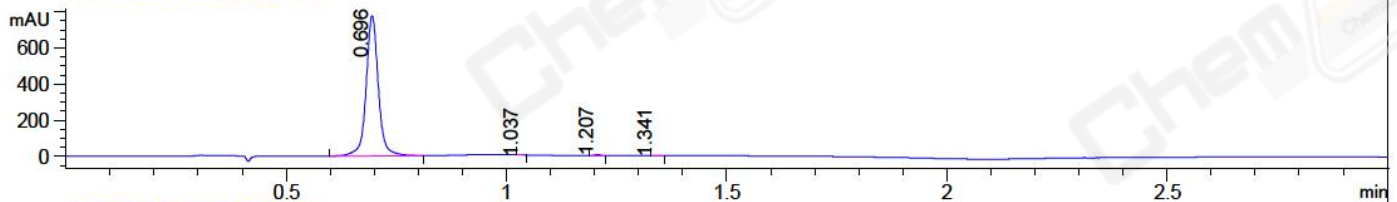


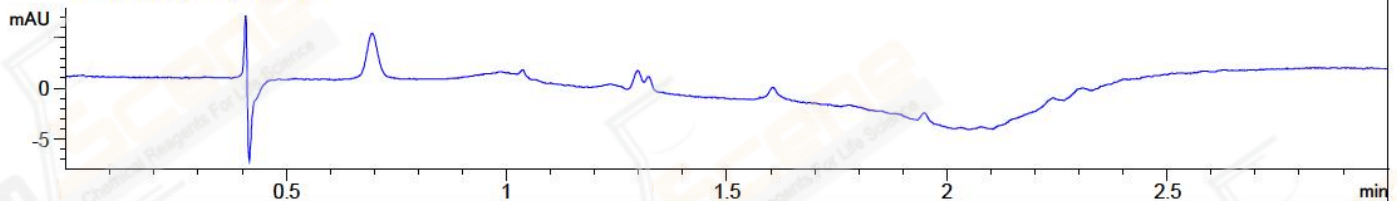
File ..DATA\2018\20180918\399\BIZ2018-918-WYQ1.D Tgt Mass (CHM):

Injection Date : 18 Sep 18 5:48 pm +0800 Seq. Line : 8
 Sample Name : BIZ2018-918-WYQ1 Location : P1-E-03
 Acq. Operator : LQ_1052 Inj : 1
 Spec. Reported : MS Integration Inj Volume : 2 ul
 Acq. Method : D:\Chem32\1\data\2018\20180918\399\1-POS-3MIN-1.M
 Analysis Method : D:\CHEM32\1\DATA\2018\20180918\399\1-POS-3MIN-1.M
 Catalog No : CS-W013591 Batch#32872 A-RP-314
 Method Info : Mobile Phase: A: water(0.01%TFA) B:ACN(0.01%TFA)
 Gradient: 5% to 95%B within 1.3 min
 Flow Rate :1.8ml/min
 Column :SunFire C18, 4.6*50mm,3.5um A-RP-314
 Oven Temperature : 45□

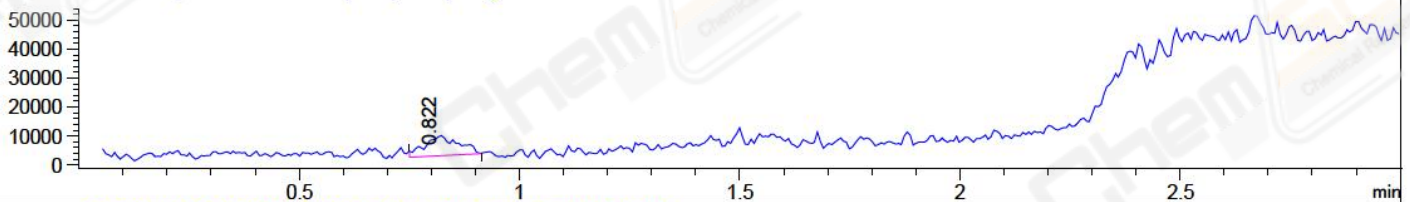
DAD1 B, Sig=214,4 Ref=off



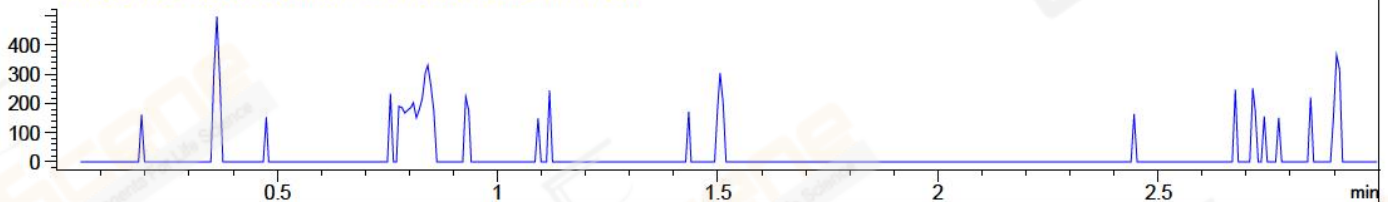
DAD1 C, Sig=254,4 Ref=off



MSD1 TIC, MS File ES-API, Pos, Scan, Frag: 70



Ion 120, MSD1 120, Target Mass 119 +H Positive, EIC=119.7:120.7



Integration Results for DAD1 B, Sig=214,4 Ref=off

RetTim	Width	Area	Height	Area%	MS (+)
0.70	0.03	1501.86	776.65	99.46	ND
1.04	0.01	0.53	0.73	0.04	ND
1.21	0.02	6.12	6.34	0.41	ND
1.34	0.02	1.52	1.60	0.10	ND

Integration Results for DAD1 C, Sig=254,4 Ref=off

RetTim	Width	Area	Height	Area%	MS (+)
--------	-------	------	--------	-------	--------

Integration Results for MSD1 TIC, MS File

RetTim	Width	Area	Height	Area%	MS (+)
0.82	0.07	36744.11	6882.67	100.00	ND

Sample Name: BIZ2018-918-WYQ1

MS Signal: MSD1 TIC, MS File, ES-API, Pos, Scan, Frag: 70

Spectra averaged over upper half of peaks.

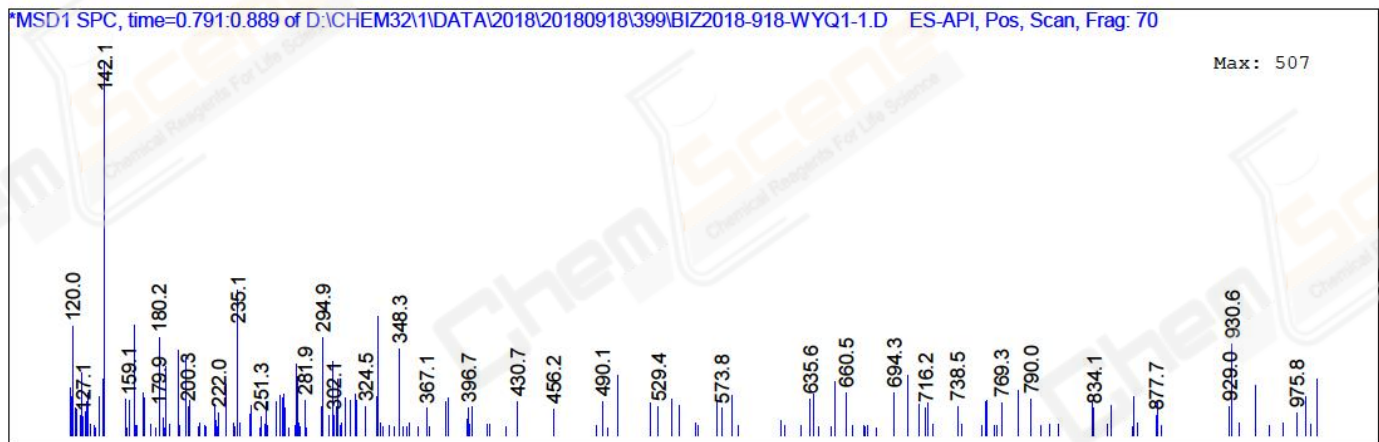
Noise Cutoff: 1000 counts.

Reportable Ion Abundance: > 10%.

LC Signal: DAD1 B, Sig=214,4 Ref=off

Peak matching window: 0.1 min

Retention Time (LC)	LC Area	Retention Time (MS)	MS Area	Mol. Weight or Ion
0.696	1502	-	-	
-	-	0.822	36744	
1.037	1	-	-	
1.207	6	-	-	
1.341	2	-	-	



*** End of Report ***