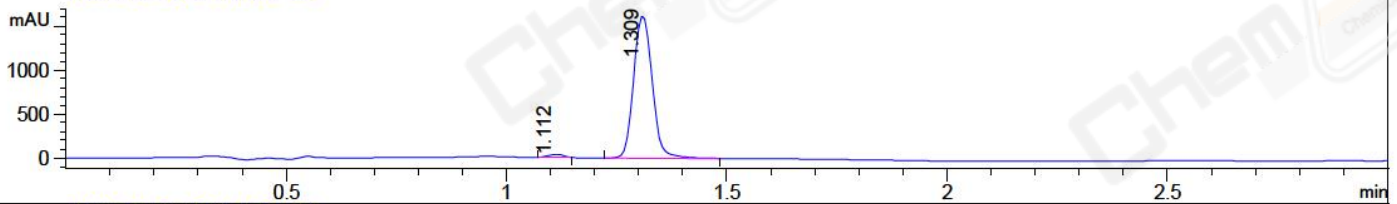
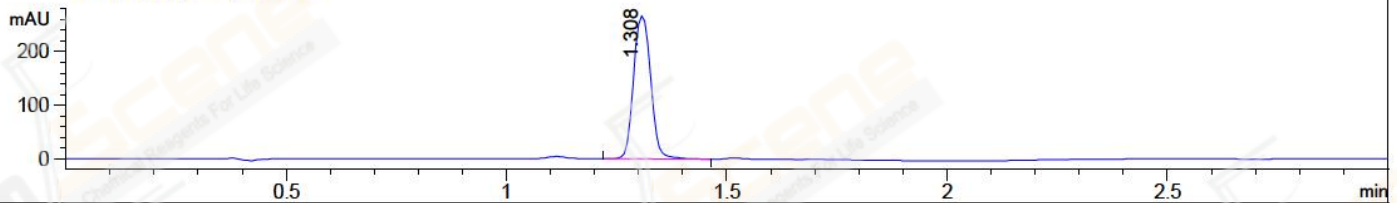


File ..ATA\2018\20181009\418 1\BIZ2018-930-WYQ12.D Tgt Mass (CHM):
 Injection Date : 9 Oct 18 1:46 pm +0800 Seq. Line : 9
 Sample Name : BIZ2018-930-WYQ12 Location : P2-F-05
 Acq. Operator : LQ_1052 Inj : 1
 Spec. Reported : MS Integration Inj Volume : 5 ul
 Acq. Method : D:\Chem32\1\data\2018\20181009\418 1\1-POS-3MIN-1(500-2000).M
 Analysis Method : D:\CHEM32\1\DATA\2018\20181009\418 1\1-POS-3MIN-1(500-2000).M
 Catalog No : CS-3579 Batch#33228 A-RP-314
 Method Info : Mobile Phase: A: water(0.01%TFA) B:ACN(0.01%TFA)
 Gradient: 5% to 95%B within 1.3 min
 Flow Rate :1.8ml/min
 Column :SunFire C18, 4.6*50mm,3.5um A-RP-314
 Oven Temperature : 45C
 Postive,MS:500-2000

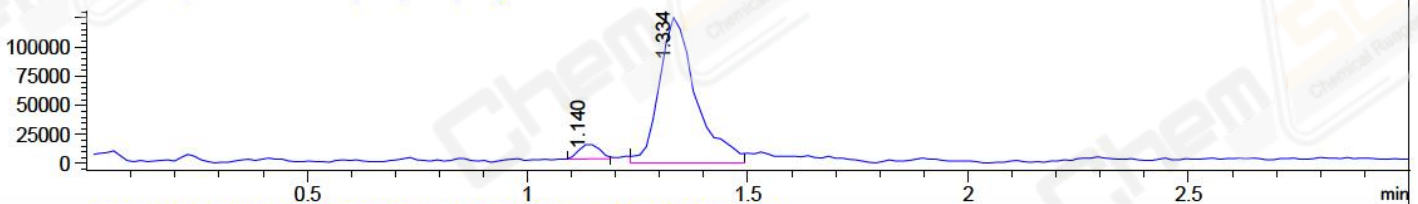
DAD1 B, Sig=214,4 Ref=off



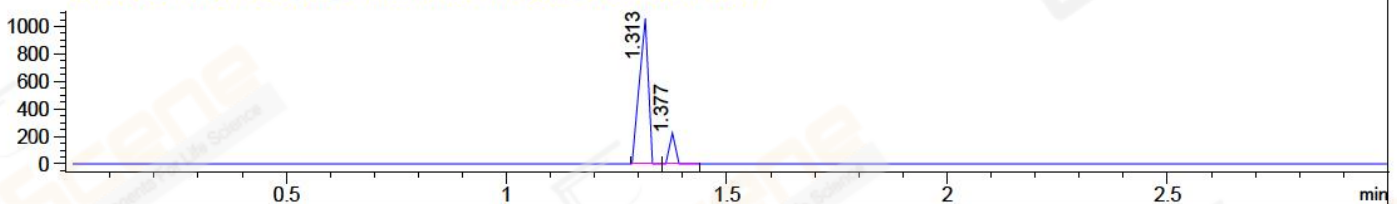
DAD1 C, Sig=254,4 Ref=off



MSD1 TIC, MS File ES-API, Pos, Scan, Frag: 70



Ion 1815.6, MSD1 1815.6, Target Mass 1814.6 +H Positive, EIC=1815.3:1816.3



Integration Results for DAD1 B, Sig=214,4 Ref=off

RetTim	Width	Area	Height	Area%	MS (+)
1.11	0.04	92.57	36.17	1.90	ND
1.31	0.05	4778.72	1639.47	98.10	908

Integration Results for DAD1 C, Sig=254,4 Ref=off

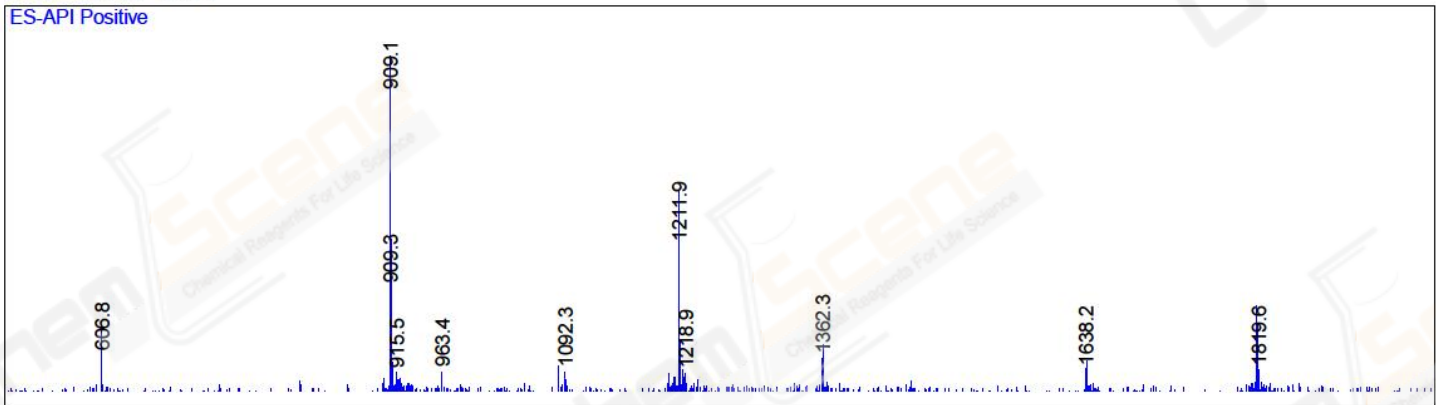
RetTim	Width	Area	Height	Area%	MS (+)
1.31	0.04	726.12	269.22	100.00	908

Integration Results for MSD1 TIC, MS File

RetTim	Width	Area	Height	Area%	MS (+)
1.14	0.05	40459.70	13104.20	5.30	ND
1.33	0.09	722344.88	125298.77	94.70	908

Ret. Time: 1.33

ES-API Positive



*MSD1 SPC, time=1.346 of D:\CHEM32\1\DATA\2018\20181009\418 1\BIZ2018-930-WYQ12.

