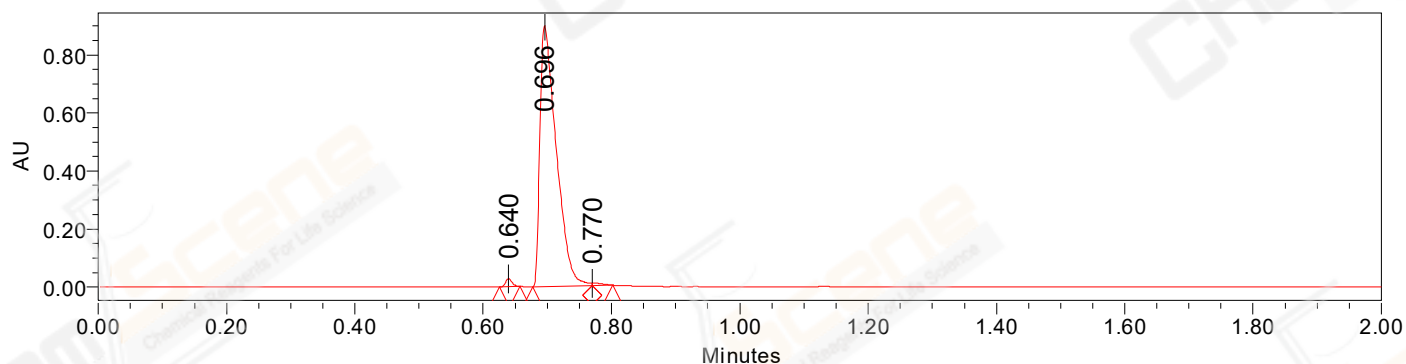


SAMPLE INFORMATION

CAS NO.: 1234015-54-3
Sample information:
Vial: 1:F,8
Injection #: 1
Injection Volume: 0.50 ul
Run Time: 2.8 Minutes
Sample Set Name: 20220606

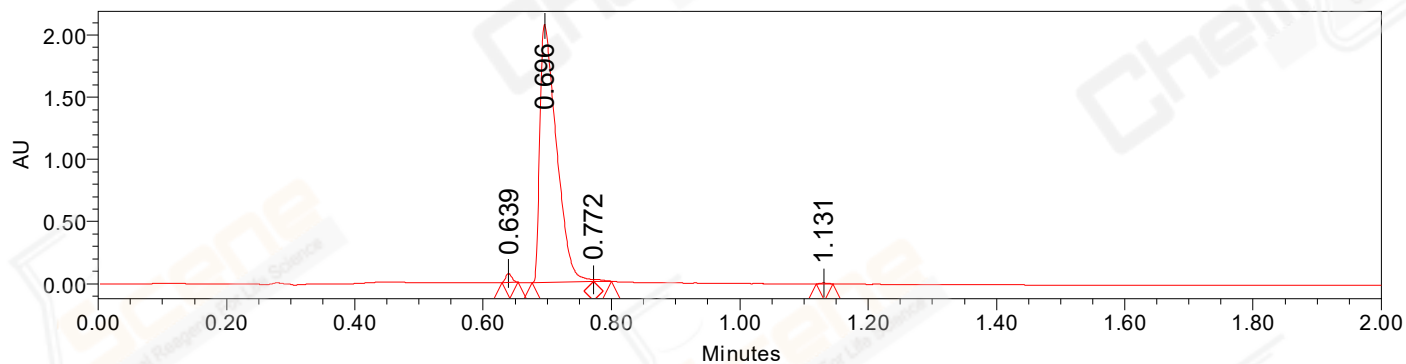
Acquired By: LY
Date Acquired: 6/6/2022 4:16:48 PM CST
Acq. Method Set: 1_POS_2MIN
Date Processed: 6/7/2022 11:02:32 AM CST,
Processing Method: PDA_01, MS_scan
Channel Name: PDA Ch1 214nm@4.8nm, MS TIC,
Column Name: A-RP-985

Auto-Scaled Chromatogram



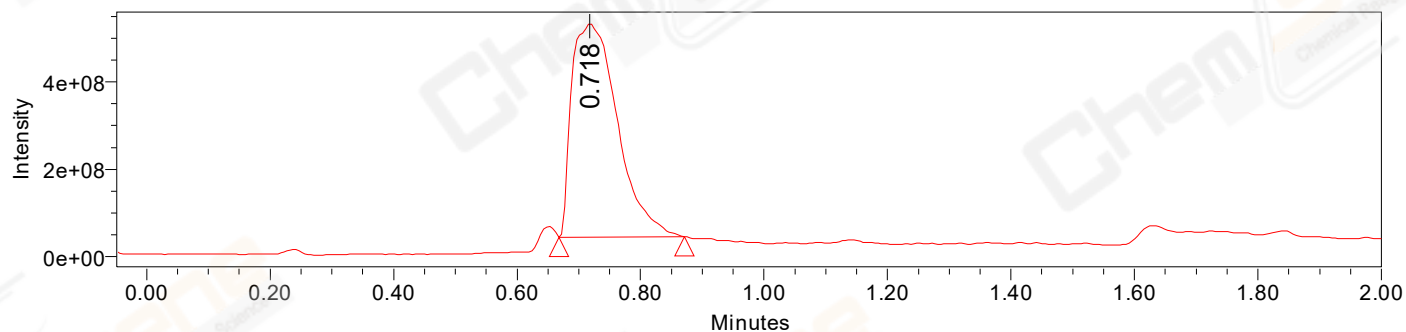
Processed Channel Descr. PDA Ch2 254nm@4.8nm

Auto-Scaled Chromatogram



Processed Channel Descr. PDA Ch1 214nm@4.8nm

Auto-Scaled Chromatogram



Processed Channel Descr. ACQ-SQD2 1: MS Scan MS TIC, Smoothed by 9 point Savitzky-Golay Filter., Time offset by -0.053 mins. (1: 150.00-1000.00 ES+, Centroid, CV=30)

Peak Results
Channel Name: PDA Ch2 254nm@4.8nm

| | RT | Width (sec) | Area | Height | % Area | Base Peak (Combined) (m/z) | Channel Name |
|---|-------|-------------|---------|--------|--------|----------------------------|---------------------|
| 1 | 0.640 | 1.950 | 19180 | 27415 | 1.19 | 152.20 | PDA Ch2 254nm@4.8nm |
| 2 | 0.696 | 5.550 | 1585468 | 897492 | 98.26 | 213.52 | PDA Ch2 254nm@4.8nm |
| 3 | 0.770 | 1.900 | 8907 | 7611 | 0.55 | 367.12 | PDA Ch2 254nm@4.8nm |

Peak Results
Channel Name: PDA Ch1 214nm@4.8nm

| | RT | Width (sec) | Area | Height | % Area | Base Peak (Combined) (m/z) | Channel Name |
|---|-------|-------------|---------|---------|--------|----------------------------|---------------------|
| 1 | 0.639 | 1.500 | 47934 | 71360 | 1.26 | 164.17 | PDA Ch1 214nm@4.8nm |
| 2 | 0.696 | 5.750 | 3726244 | 2075330 | 98.14 | 213.52 | PDA Ch1 214nm@4.8nm |
| 3 | 0.772 | 1.700 | 17149 | 16157 | 0.45 | 367.12 | PDA Ch1 214nm@4.8nm |
| 4 | 1.131 | 1.550 | 5498 | 6889 | 0.14 | 228.22 | PDA Ch1 214nm@4.8nm |

Peak Results
Channel Name: MS TIC

| | RT | Width (sec) | Area | Height | % Area | Base Peak (Combined) (m/z) | Channel Name |
|---|-------|-------------|------------|-----------|--------|----------------------------|--------------|
| 1 | 0.718 | 12.186 | 2502423709 | 487639161 | 100.00 | 204.14 | MS TIC |

Match Plot

