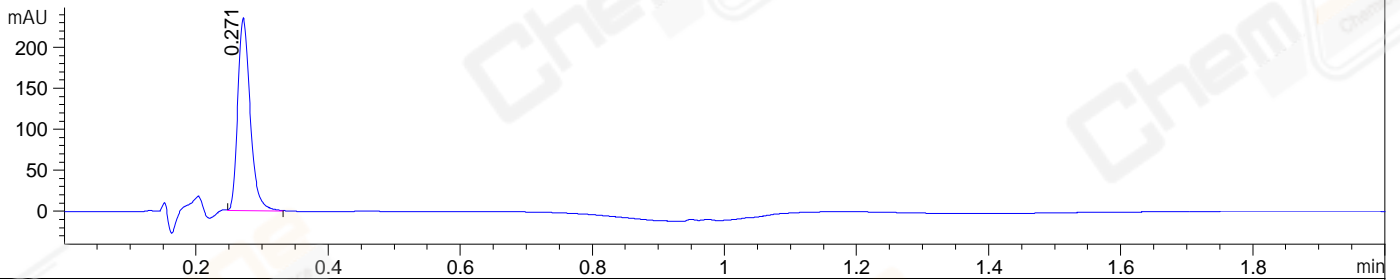
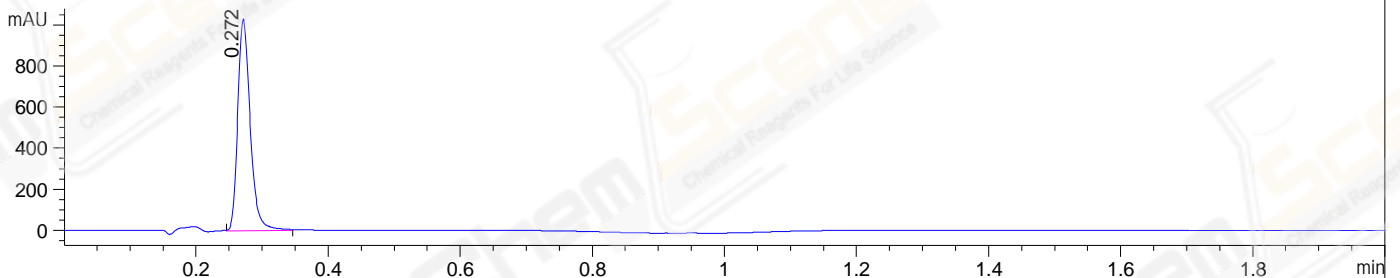


File ..-59-22\007-P2-B2-LJC202401150329-S1910143.D Tgt Mass (EZX):
Injection Date : 16-Jan-24, 16:23:25 Seq. Line : 7
Sample Name : LJC202401150329-S1910143 Location : P2-B-02
Acq. Operator : LY Inj : 1
Spec. Reported : MS Integration Inj Volume : 1 ul
Acq. Method : D:\ChemStation\1\Data\20240116\20240116-3 2024-01-16 15-59-22\1-POS-2MIN(50
Analysis Method : D:\ChemStation\1\Data\20240116\20240116-3 2024-01-16 15-59-22\1-POS-2MIN(50
CAS NO. : 35344-95-7
Method Info : Mobile Phase: A: Water (0.01%TFA) B: ACN (0.01%TFA)
Gradient: 5% to 95%B within 0.6min
Flow Rate: 1.5ml/min
Column: Shim-pack Scepter_C18-120_3.0*33mm,3.0µm
Oven Temperature: 45 degree Celsius

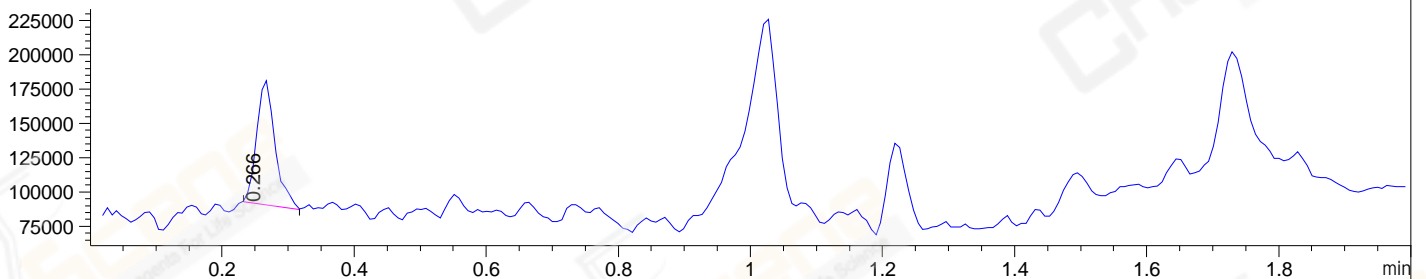
DAD1 A, Sig=214,4 Ref=off



DAD1 B, Sig=254,4 Ref=off



MSD1 TIC, MS File ES-API, Pos, Scan, Frag: 135



Integration Results for DAD1 A, Sig=214,4 Ref=off

RetTim	Width	Area	Height	Area%	MS(+)
0.27	0.02	306.89	235.16	100.00	79

Integration Results for DAD1 B, Sig=254,4 Ref=off

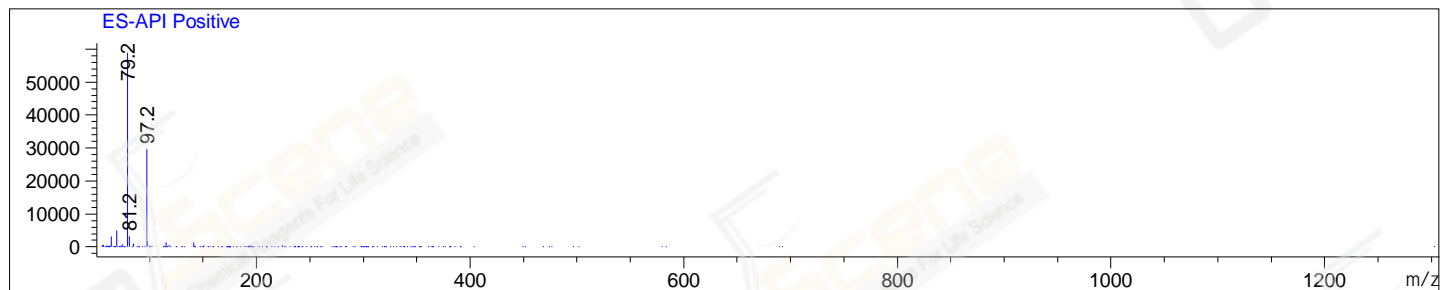
RetTim	Width	Area	Height	Area%	MS(+)
0.27	0.02	1353.73	1032.68	100.00	79

Integration Results for MSD1 TIC, MS File

RetTim	Width	Area	Height	Area%	MS(+)
0.27	0.03	176698.83	92681.25	100.00	79

Ret. Time: 0.27

<<<< POSITIVE SPECTRA >>>>



Base Peak Ion Ratios:

Ion	Mass	Abundance	Ratio
A	79.20	58942	100.00
A + 2	81.20	3165	5.37
A + 4	83.40	29	0.05

2nd Largest Peak Ion Ratios:

Ion	Mass	Abundance	Ratio
B	97.20	29664	100.00
B + 1	98.20	1720	5.80
B + 2	99.40	50	0.17
B + 3	100.00	489	1.65
B + 4	100.85	55	0.19
B + 5	102.20	322	1.09

*** End of Report ***