

SAMPLE INFORMATION

CAS NO.: 2097938-73-1

Sample information:

Vial: 2:E,8

Injection #: 1

Injection Volume: 0.30 ul

Run Time: 2.8 Minutes

Sample Set Name: 20221111

Acquired By: LY

Date Acquired: 11/11/2022 2:26:37 PM CST

Acq. Method Set: 1_POS_2MIN

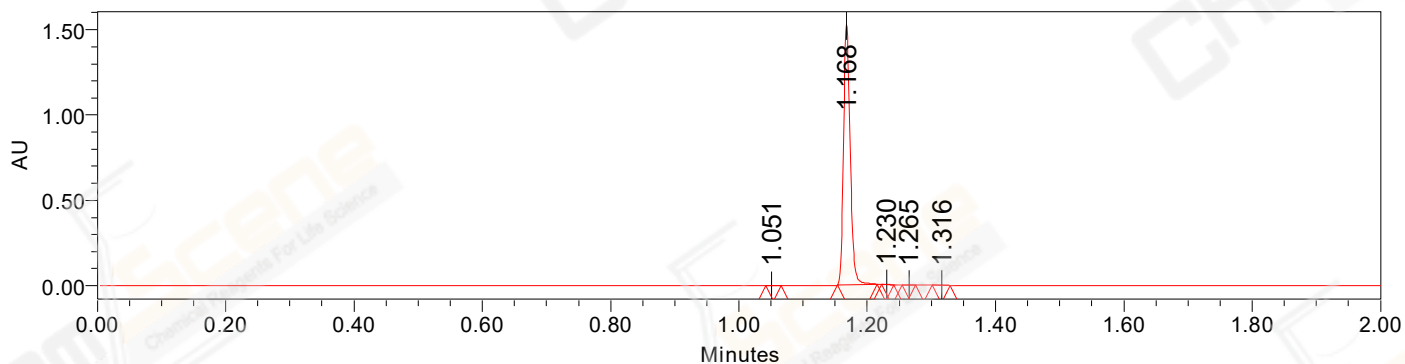
Date Processed: 11/11/2022 2:30:11 PM CST,

Processing Method: PDA_01, MS_scan

Channel Name: PDA Ch1 214nm@4.8nm, MS TIC,

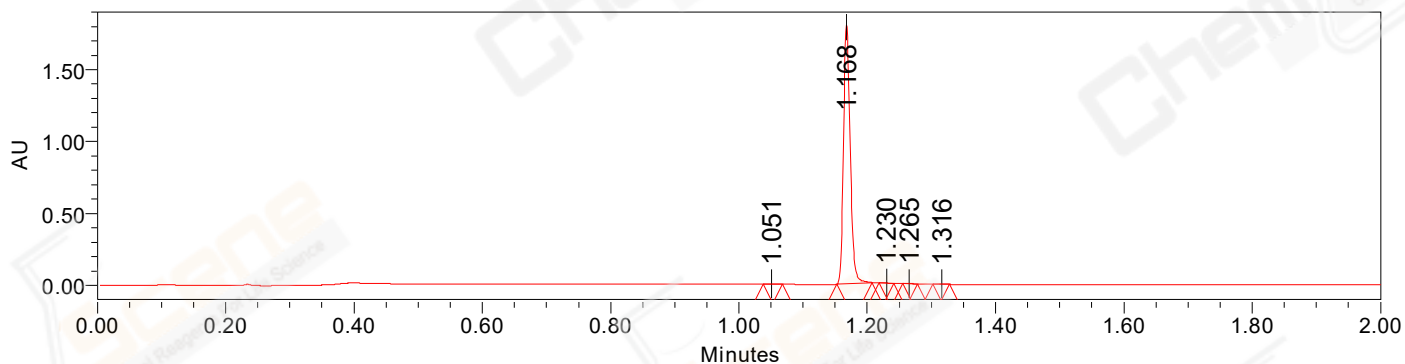
Column Name: A-RP-985

Auto-Scaled Chromatogram



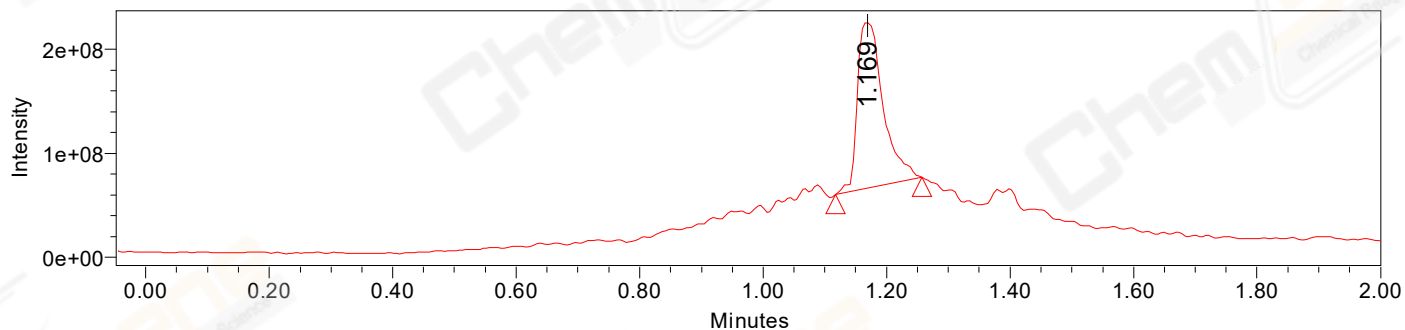
Processed Channel Descr. PDA Ch2 254nm@4.8nm

Auto-Scaled Chromatogram



Processed Channel Descr. PDA Ch1 214nm@4.8nm

Auto-Scaled Chromatogram



Processed Channel Descr. ACQ-SQD2 1: MS Scan MS TIC, Smoothed by 9 point Savitzky-Golay Filter., Time offset by -0.053 mins. (1: 150.00-1000.00 ES+, Centroid, CV=30)

Peak Results
Channel Name: PDA Ch2 254nm@4.8nm

	RT	Width (sec)	Area	Height	% Area	Base Peak (Combined) (m/z)	Channel Name
1	1.051	1.450	696	1092	0.06	152.99	PDA Ch2 254nm@4.8nm
2	1.168	3.750	1108521	1527293	99.65	152.06	PDA Ch2 254nm@4.8nm
3	1.230	1.100	517	947	0.05	677.37	PDA Ch2 254nm@4.8nm
4	1.265	1.250	812	1344	0.07	152.99	PDA Ch2 254nm@4.8nm
5	1.316	1.650	1820	2772	0.16	151.98	PDA Ch2 254nm@4.8nm

Peak Results
Channel Name: PDA Ch1 214nm@4.8nm

	RT	Width (sec)	Area	Height	% Area	Base Peak (Combined) (m/z)	Channel Name
1	1.051	1.800	1377	1999	0.10	153.01	PDA Ch1 214nm@4.8nm
2	1.168	3.300	1311246	1801817	99.64	152.06	PDA Ch1 214nm@4.8nm
3	1.230	1.350	661	1163	0.05	677.35	PDA Ch1 214nm@4.8nm
4	1.265	1.400	1069	1610	0.08	152.02	PDA Ch1 214nm@4.8nm
5	1.316	1.550	1669	2556	0.13	151.98	PDA Ch1 214nm@4.8nm

Peak Results
Channel Name: MS TIC

	RT	Width (sec)	Area	Height	% Area	Base Peak (Combined) (m/z)	Channel Name
1	1.169	8.414	460855841	162132836	100.00	339.18	MS TIC

Match Plot

