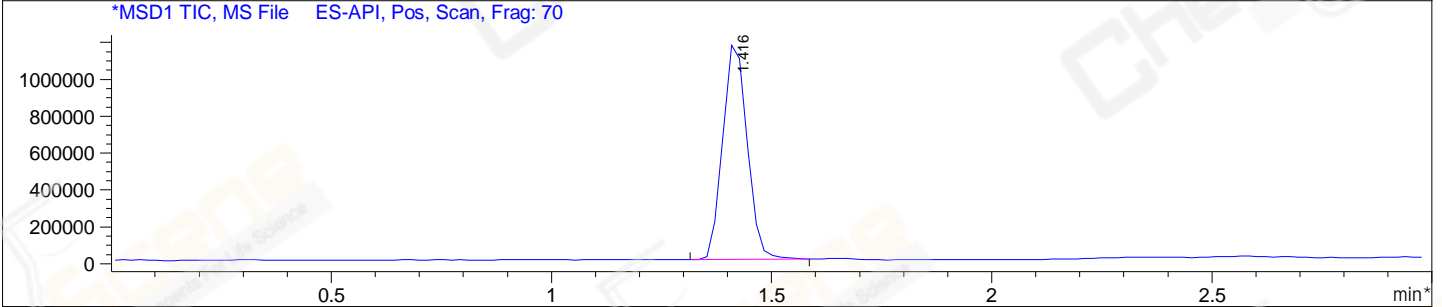
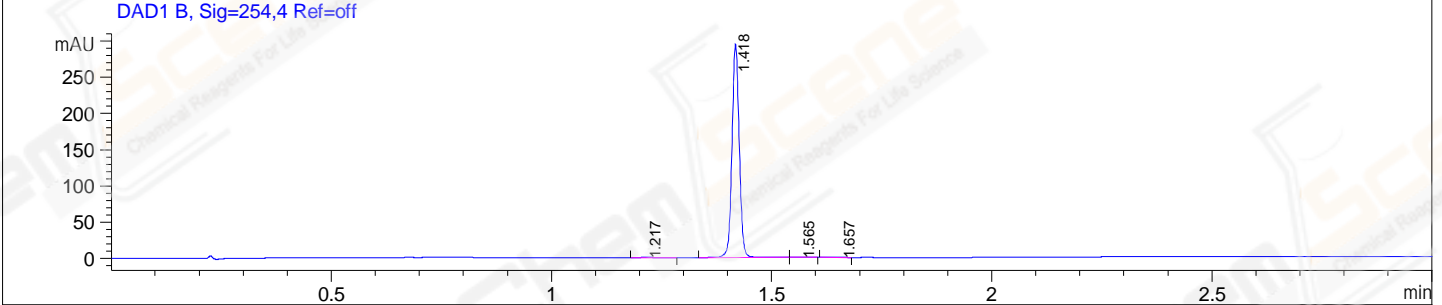
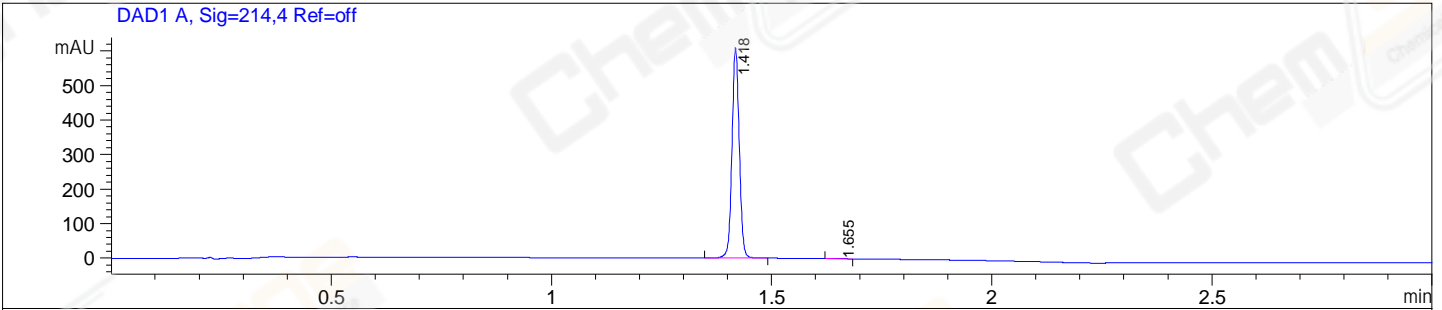


File E:\ChemStation\1\DATA\2024\2024-01\2024-01-24\BIZ2024-119-WLQ46-UPLC-MS-10-025357.D
 Injection Date : 24-Jan-24, 14:44:41 Tgt Mass(EZX) :
 Sample Name : BIZ2024-119-WLQ46 Location : P2-D-04
 Acq. Operator : LY_2278 Inj : 1
 Spec. Reported : MS Integration Inj Volume : 0.8 ul
 Acq. Method : E:\ChemStation\1\Methods\1-POS-UPLC3.0MIN(1.2)(150-2000).M
 Analysis Method : E:\CHEMSTATION\1\METHODS\1-POS-UPLC3.0MIN(1.2)(150-2000).M
 CAS NO. : 2170484-59-8 WalkUp method: '1-POS-3MIN-(150-2000)' Project: BIZ2024
 Method Info : Mobile Phase: A: water(0.01%TFA) B:ACN(0.01%TFA)
 Gradient: 5% to 95%B within 2.0 min
 Flow Rate :1.2ml/min
 Column :Shim-pack Scepter C18-120, 3.0*33mm,3um
 Oven Temperature : 45C



Integration Results for DAD1 A, Sig=214,4 Ref=off

RetTim	Width	Area	Height	Area%
1.42	0.02	700.73	610.53	99.84
1.66	0.02	1.09	0.65	0.16

Integration Results for DAD1 B, Sig=254,4 Ref=off

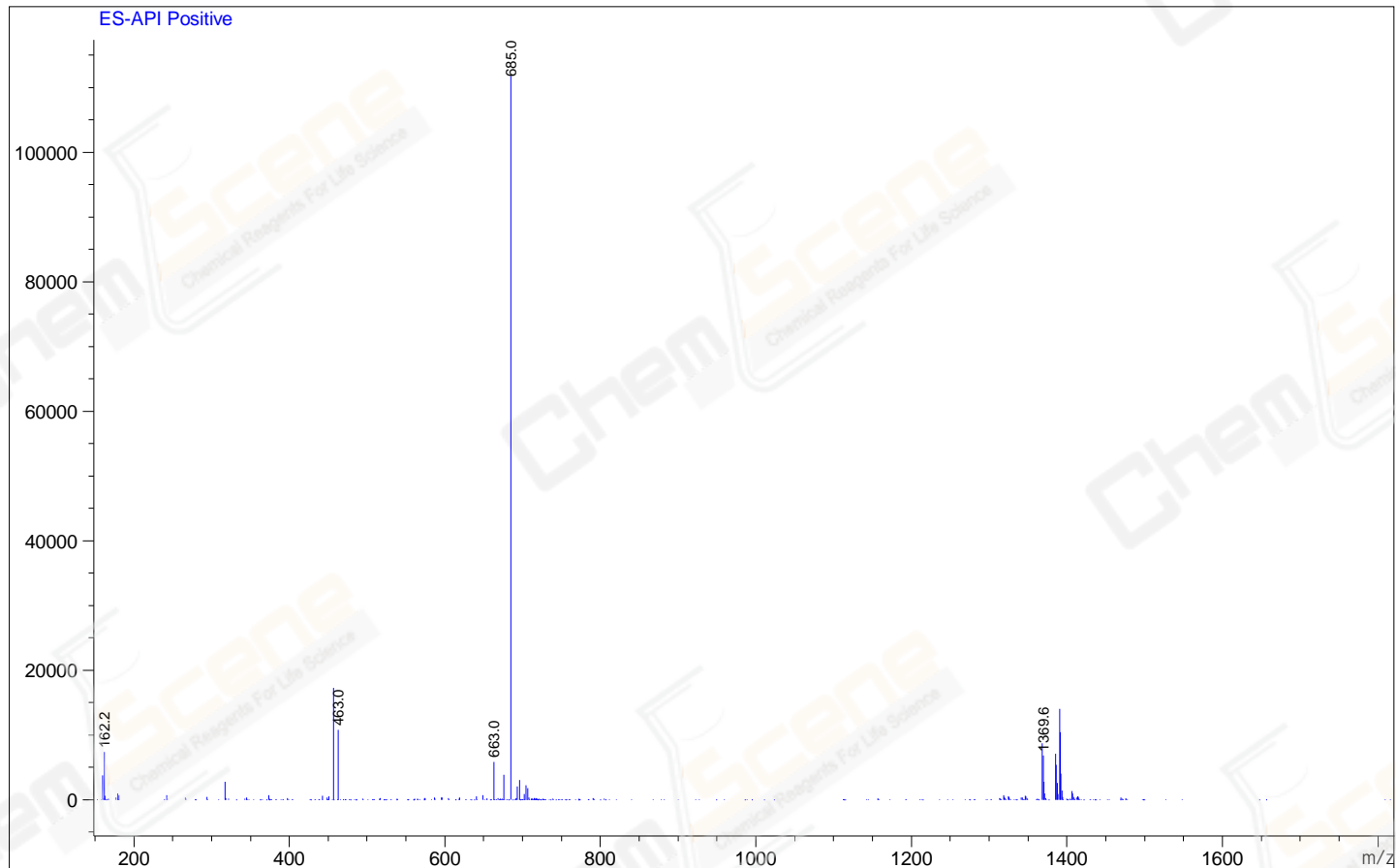
RetTim	Width	Area	Height	Area%
1.22	0.03	0.62	0.36	0.18
1.42	0.02	337.10	294.29	99.56
1.57	0.02	0.40	0.27	0.12
1.66	0.02	0.45	0.30	0.13

Integration Results for MSD1 TIC, MS File

RetTim	Width	Area	Height	Area%
1.42	0.06	4510359.00	1197306.13	100.00

Ret. Time: 1.42

<<<< POSITIVE SPECTRA >>>>



*** End of Report ***