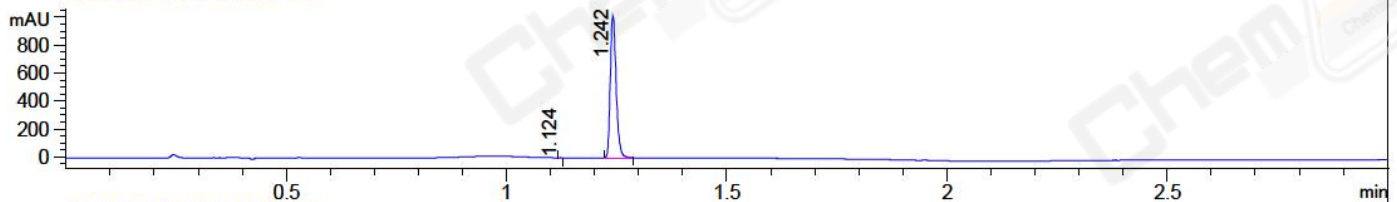


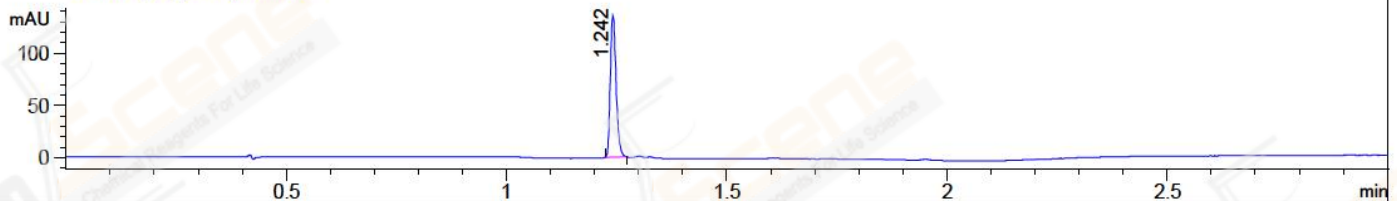
File ..\DATA\2018\20181030\470\BIZ2018-029-WYQ10.D Tgt Mass (CHM):

Injection Date : 30 Oct 18 11:19 am +0800 Seq. Line : 21  
 Sample Name : BIZ2018-029-WYQ10 Location : P1-C-06  
 Acq. Operator : LQ\_1052 Inj : 1  
 Spec. Reported : MS Integration Inj Volume : 1 ul  
 Acq. Method : D:\Chem32\1\data\2018\20181030\470\1-POS-3MIN-1.M  
 Analysis Method : D:\CHEM32\1\DATA\2018\20181030\470\1-POS-3MIN-1.M  
 Catalog No : CS-6150 Batch#33762 A-RP-314  
 Method Info : Mobile Phase: A: water(0.01%TFA) B:ACN(0.01%TFA)  
 Gradient: 5% to 95%B within 1.3 min  
 Flow Rate :1.8ml/min  
 Column :SunFire C18, 4.6\*50mm,3.5um A-RP-314  
 Oven Temperature : 45□

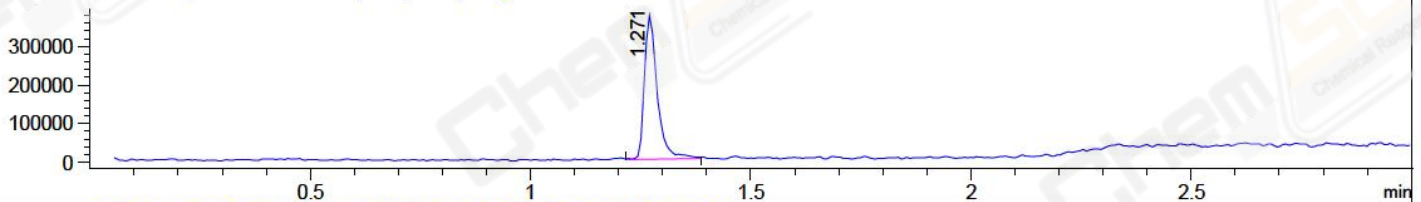
DAD1 B, Sig=214,4 Ref=off



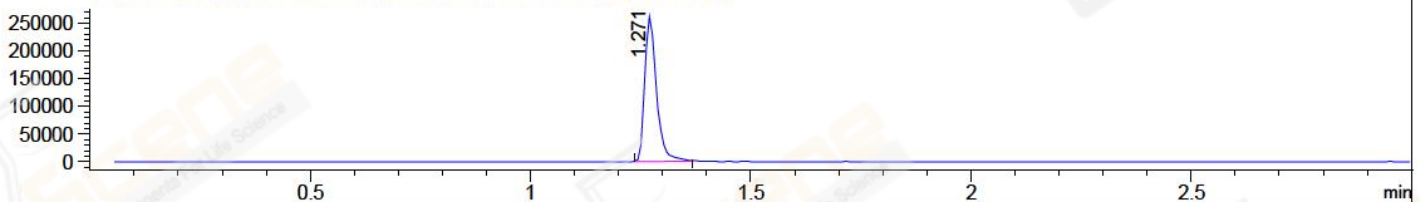
DAD1 C, Sig=254,4 Ref=off



MSD1 TIC, MS File ES-API, Pos, Scan, Frag: 70



Ion 381.1, MSD1 381.1, Target Mass 380.1 +H Positive, EIC=380.8:381.8



## Integration Results for DAD1 B, Sig=214,4 Ref=off

RetTim	Width	Area	Height	Area%	MS (+)
1.12	0.01	0.34	0.67	0.04	ND
1.24	0.01	934.08	1021.23	99.96	381

## Integration Results for DAD1 C, Sig=254,4 Ref=off

RetTim	Width	Area	Height	Area%	MS (+)
1.24	0.01	122.79	135.61	100.00	381

## Integration Results for MSD1 TIC, MS File

RetTim	Width	Area	Height	Area%	MS (+)
1.27	0.03	755712.25	371767.78	100.00	381

Ret. Time: 1.27

<<<< POSITIVE SPECTRA >>>>

ES-API Positive

