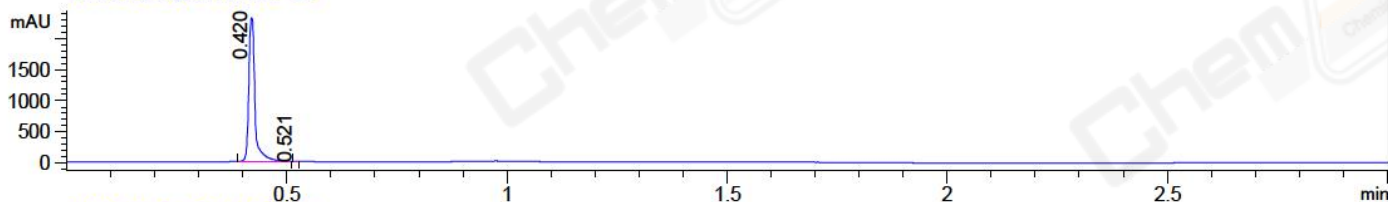
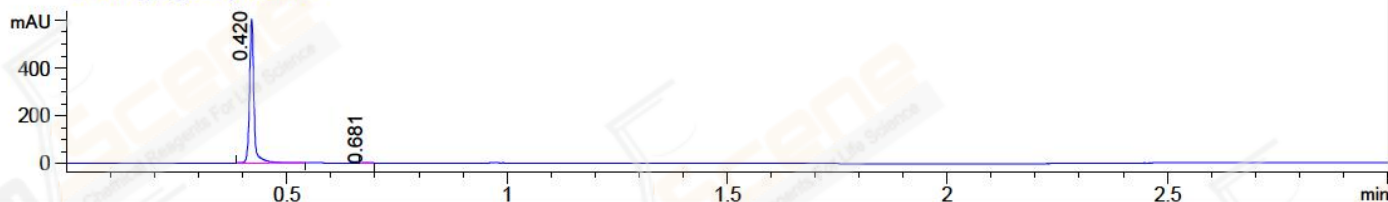


File ..DATA\2018\20181030\470\BIZ2018-030-WYQ13.D Tgt Mass (CHM):  
 Injection Date : 30 Oct 18 3:46 pm +0800 Seq. Line : 78  
 Sample Name : BIZ2018-030-WYQ13 Location : P2-D-04  
 Acq. Operator : LQ\_1052 Inj : 1  
 Spec. Reported : MS Integration Inj Volume : 1 ul  
 Acq. Method : D:\Chem32\1\data\2018\20181030\470\1-POS-3MIN-1.M  
 Analysis Method : D:\CHEM32\1\DATA\2018\20181030\470\1-POS-3MIN-1.M  
 Catalog No : CS-0013171 Batch#33826 A-RP-314  
 Method Info : Mobile Phase: A: water(0.01%TFA) B:ACN(0.01%TFA)  
 Gradient: 5% to 95%B within 1.3 min  
 Flow Rate :1.8ml/min  
 Column :SunFire C18, 4.6\*50mm,3.5um A-RP-314  
 Oven Temperature : 45□

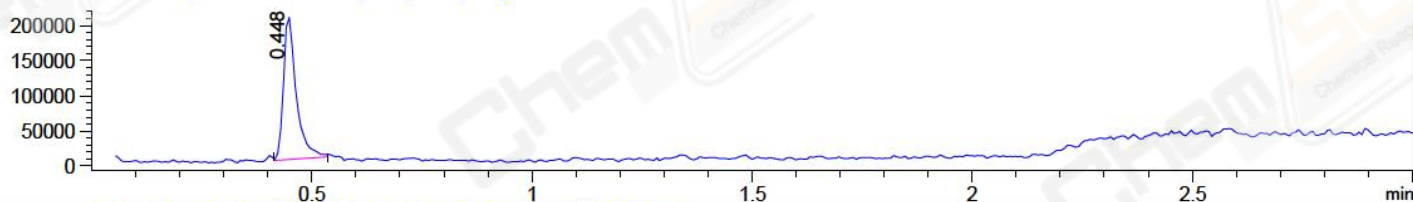
DAD1 B, Sig=214,4 Ref=off



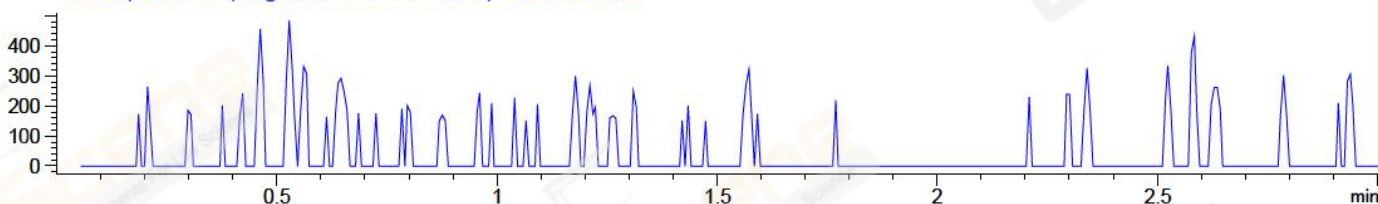
DAD1 C, Sig=254,4 Ref=off



MSD1 TIC, MS File ES-API, Pos, Scan, Frag: 70



Ion 213, MSD1 213, Target Mass 212 +H Positive, EIC=212.7:213.7



## Integration Results for DAD1 B, Sig=214,4 Ref=off

RetTim	Width	Area	Height	Area%	MS (+)
0.42	0.02	2284.54	2326.01	99.97	177
0.52	0.01	0.66	1.39	0.03	177

## Integration Results for DAD1 C, Sig=254,4 Ref=off

RetTim	Width	Area	Height	Area%	MS (+)
0.42	0.01	428.70	608.35	99.93	177
0.68	0.02	0.28	0.22	0.07	217

## Integration Results for MSD1 TIC, MS File

RetTim	Width	Area	Height	Area%	MS (+)
0.45	0.03	411135.59	203704.27	100.00	177

Ret. Time: 0.45

<<<< POSITIVE SPECTRA >>>>

ES-API Positive

