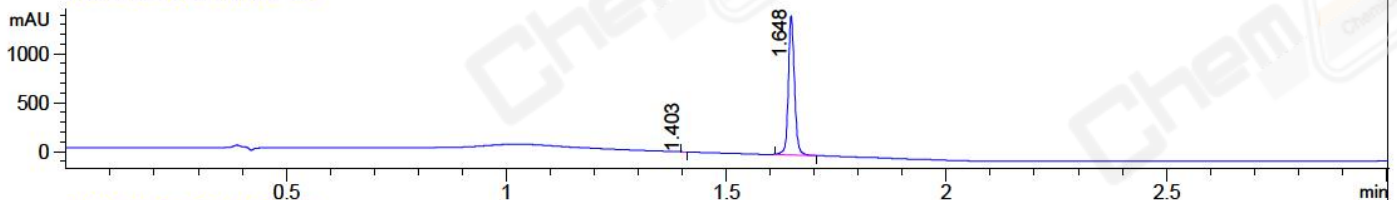


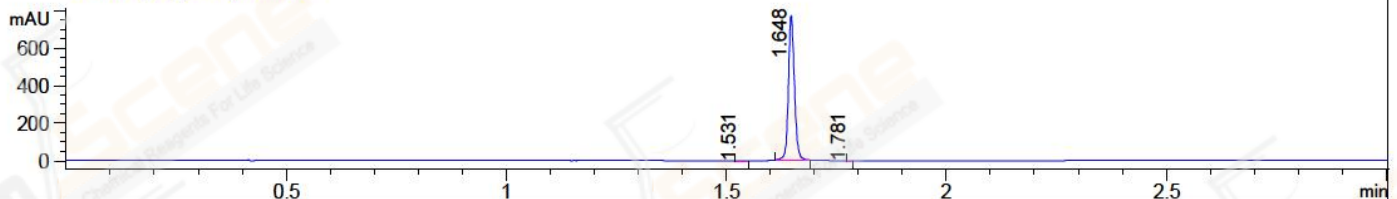
File ..\DATA\2018\20181107\481\BIZ2018-N06-WYQ14.D Tgt Mass (CHM):

Injection Date : 7 Nov 18 11:45 am +0800 Seq. Line : 26  
 Sample Name : BIZ2018-N06-WYQ14 Location : P2-D-07  
 Acq. Operator : LQ\_1052 Inj : 1  
 Spec. Reported : MS Integration Inj Volume : 1 ul  
 Acq. Method : D:\Chem32\1\data\2018\20181107\481\1-POS-3MIN-1.M  
 Analysis Method : D:\CHEM32\1\DATA\2018\20181107\481\1-POS-3MIN-1.M  
 Catalog No : CS-3263 Batch#34035 A-RP-314  
 Method Info : Mobile Phase: A: water(0.01%TFA) B:ACN(0.01%TFA)  
 Gradient: 5% to 95%B within 1.3 min  
 Flow Rate :1.8ml/min  
 Column :SunFire C18, 4.6\*50mm,3.5um A-RP-314  
 Oven Temperature : 45□

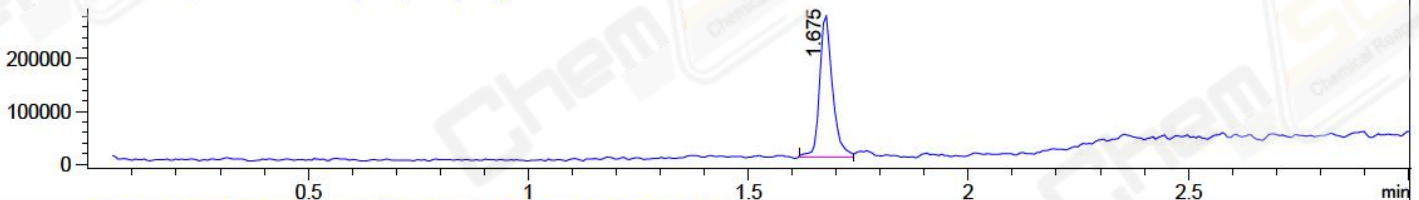
DAD1 B, Sig=214,4 Ref=off



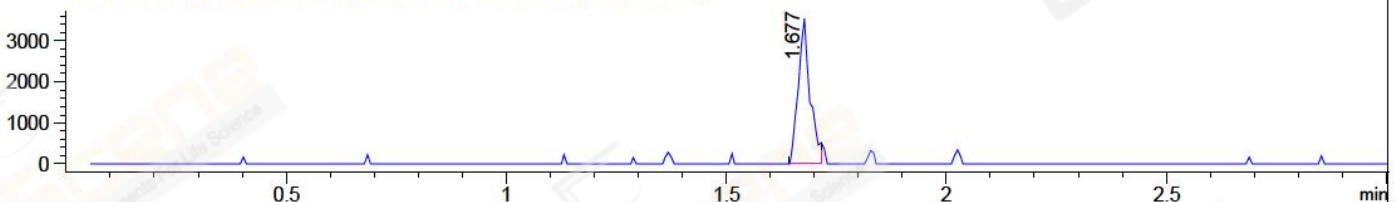
DAD1 C, Sig=254,4 Ref=off



MSD1 TIC, MS File ES-API, Pos, Scan, Frag: 70



Ion 483.1, MSD1 483.1, Target Mass 482.1 +H Positive, EIC=482.8:483.8



## Integration Results for DAD1 B, Sig=214,4 Ref=off

RetTim	Width	Area	Height	Area%	MS (+)
1.40	0.01	0.54	0.88	0.04	160
1.65	0.01	1397.97	1427.51	99.96	445

## Integration Results for DAD1 C, Sig=254,4 Ref=off

RetTim	Width	Area	Height	Area%	MS (+)
1.53	0.02	0.21	0.22	0.03	160
1.65	0.01	747.43	774.00	99.96	445
1.78	0.01	0.11	0.22	0.02	279

## Integration Results for MSD1 TIC, MS File

RetTim	Width	Area	Height	Area%	MS (+)
1.68	0.03	543692.94	269998.97	100.00	445

Ret. Time: 1.68

<<<< POSITIVE SPECTRA >>>>

ES-API Positive

