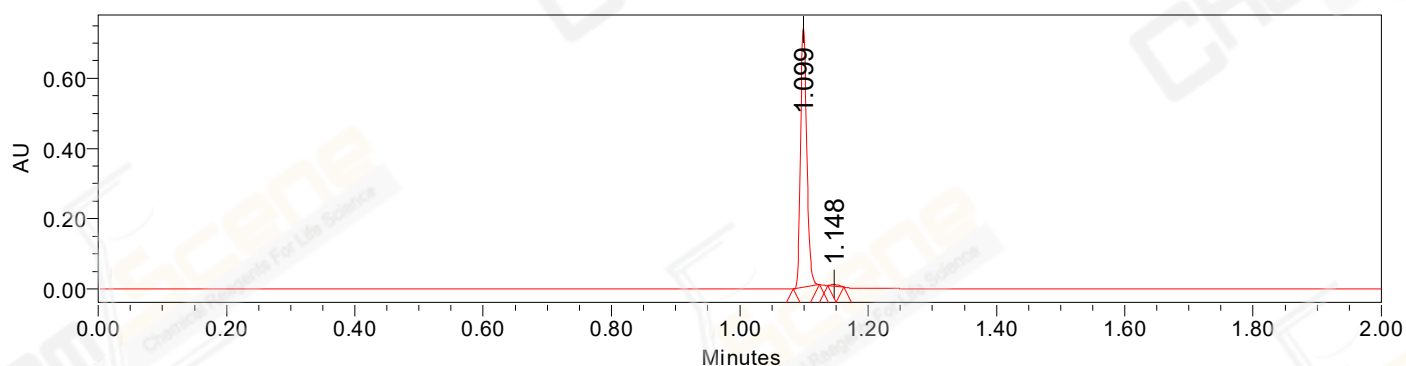


## SAMPLE INFORMATION

CAS NO.: 256373-96-3  
Sample information:  
Vial: 1:E,6  
Injection #: 1  
Injection Volume: 0.50 ul  
Run Time: 2.8 Minutes  
Sample Set Name: 20220726

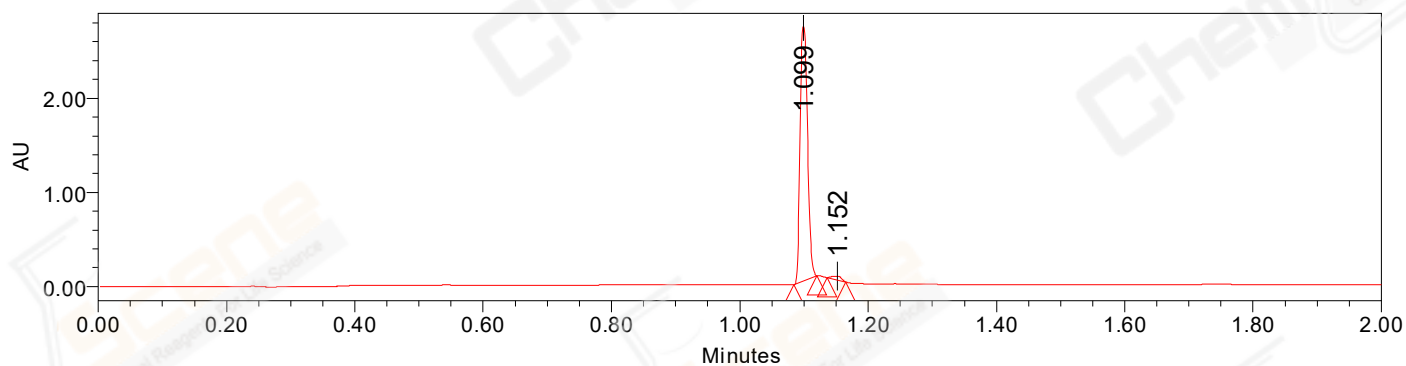
Acquired By: LY  
Date Acquired: 7/26/2022 5:10:53 PM CST  
Acq. Method Set: 1\_POS\_2MIN  
Date Processed: 7/27/2022 9:39:48 AM CST,  
Processing Method: PDA\_01, MS\_scan  
Channel Name: PDA Ch1 214nm@4.8nm, MS TIC,  
Column Name: A-RP-985

### Auto-Scaled Chromatogram



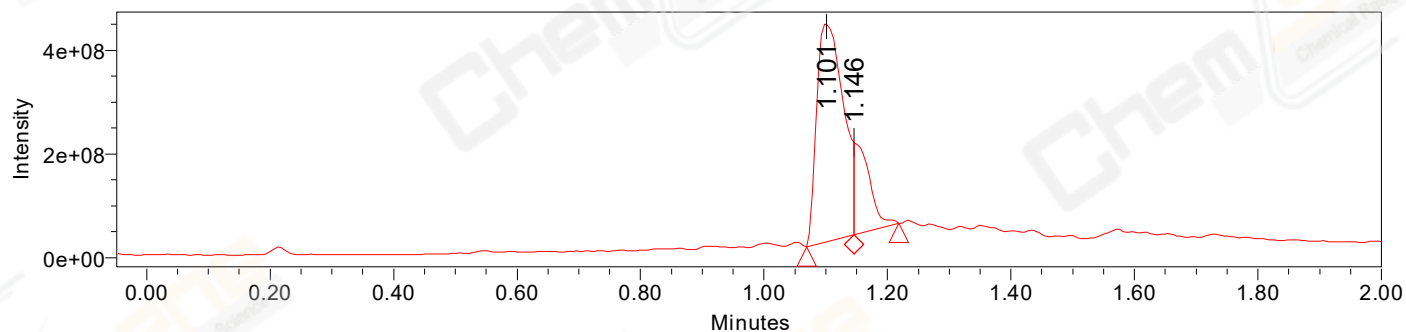
Processed Channel Descr. PDA Ch2 254nm@4.8nm

### Auto-Scaled Chromatogram



Processed Channel Descr. PDA Ch1 214nm@4.8nm

### Auto-Scaled Chromatogram



Processed Channel Descr. ACQ-SQD2 1: MS Scan MS TIC, Smoothed by 9 point Savitzky-Golay Filter., Time offset by -0.053 mins. (1: 150.00-1000.00 ES+, Centroid, CV=30)

Peak Results  
Channel Name: PDA Ch2 254nm@4.8nm

	RT	Width (sec)	Area	Height	% Area	Base Peak (Combined) (m/z)	Channel Name
1	1.099	2.450	499008	737983	99.14	151.98	PDA Ch2 254nm@4.8nm
2	1.148	1.450	4340	4797	0.86	809.19	PDA Ch2 254nm@4.8nm

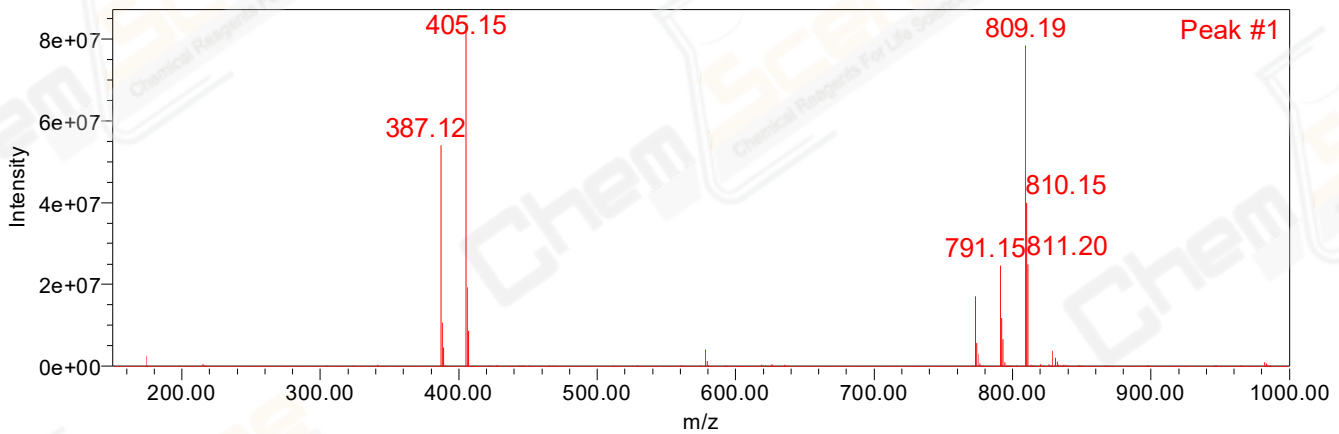
Peak Results  
Channel Name: PDA Ch1 214nm@4.8nm

	RT	Width (sec)	Area	Height	% Area	Base Peak (Combined) (m/z)	Channel Name
1	1.099	2.150	2172808	2705743	98.14	152.02	PDA Ch1 214nm@4.8nm
2	1.152	1.750	41135	41458	1.86	809.19	PDA Ch1 214nm@4.8nm

Peak Results  
Channel Name: MS TIC

	RT	Width (sec)	Area	Height	% Area	Base Peak (Combined) (m/z)	Channel Name
1	1.101	4.642	1270209840	426314312	80.77	405.14	MS TIC
2	1.146	4.352	302378124	177436186	19.23	174.07	MS TIC

Match Plot



Match Plot

