

## SAMPLE INFORMATION

CAS NO.: 1628805-46-8

Sample information:

Vial: 2:B,5

Injection #: 1

Injection Volume: 0.30 ul

Run Time: 2.8 Minutes

Sample Set Name: 20221213

Acquired By: LY

Date Acquired: 12/13/2022 5:58:23 PM CST

Acq. Method Set: 1\_POS\_2MIN

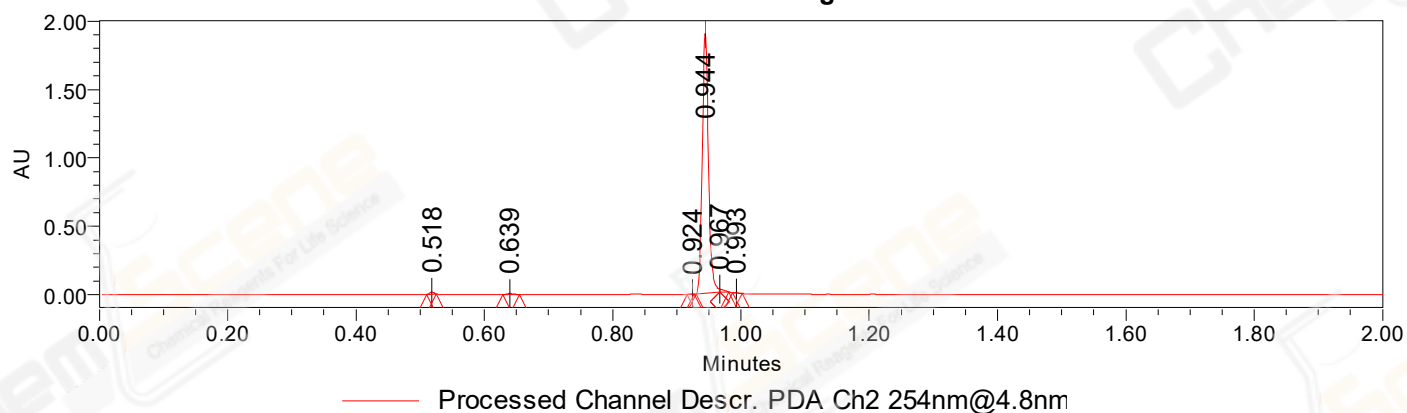
Date Processed: 12/14/2022 9:30:49 AM CST,

Processing Method: PDA\_01, MS\_scan

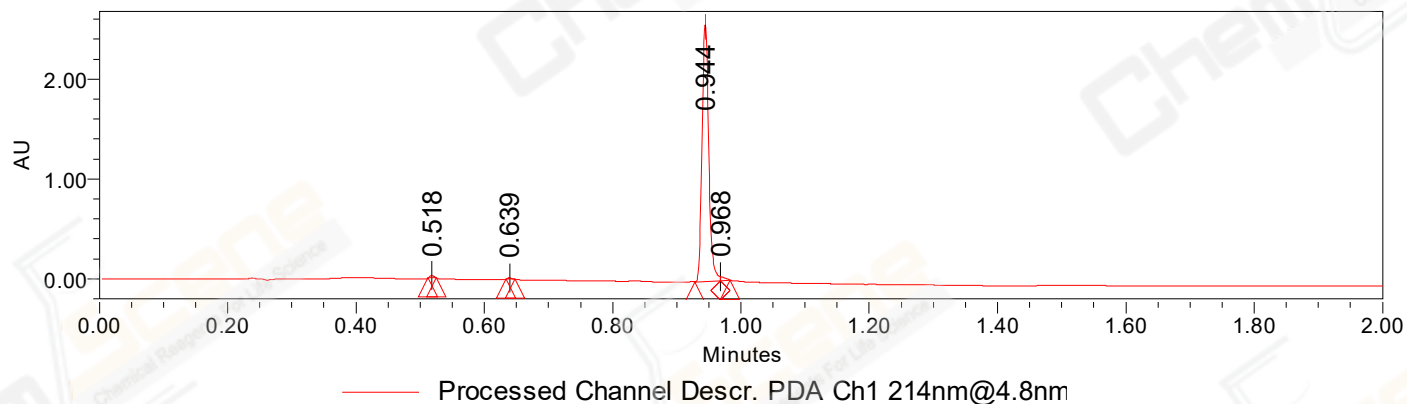
Channel Name: PDA Ch1 214nm@4.8nm, MS TIC,

Column Name: A-RP-985

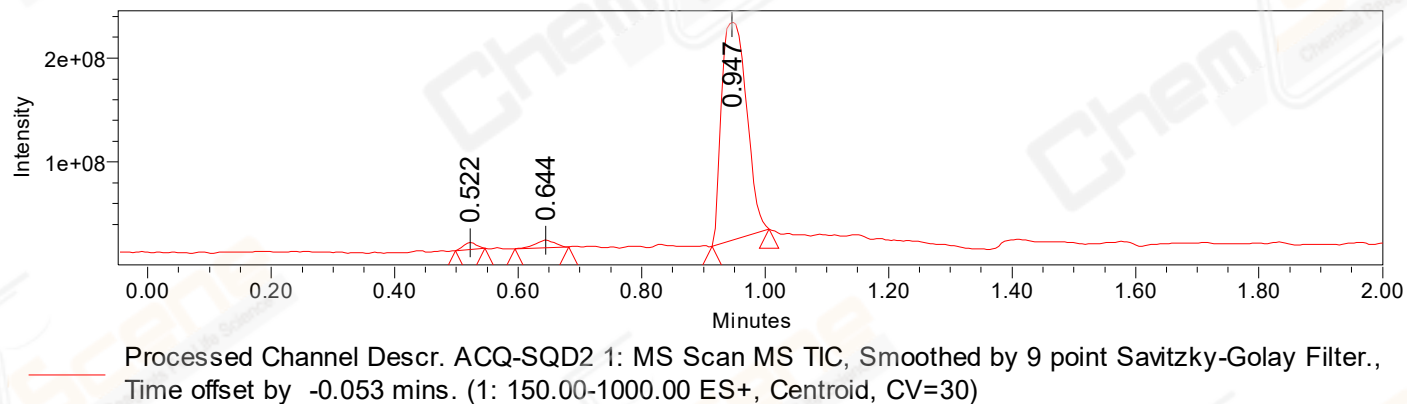
### Auto-Scaled Chromatogram



### Auto-Scaled Chromatogram



### Auto-Scaled Chromatogram



Peak Results  
Channel Name: PDA Ch2 254nm@4.8nm

	RT	Width (sec)	Area	Height	% Area	Base Peak (Combined) (m/z)	Channel Name
1	0.518	0.900	6885	14224	0.53	847.28	PDA Ch2 254nm@4.8nm
2	0.639	1.550	5639	8521	0.44	206.71	PDA Ch2 254nm@4.8nm
3	0.924	0.700	669	1887	0.05	213.10	PDA Ch2 254nm@4.8nm
4	0.944	2.200	1264197	1897841	98.09	152.01	PDA Ch2 254nm@4.8nm
5	0.967	0.850	10807	23518	0.84	152.05	PDA Ch2 254nm@4.8nm
6	0.993	0.850	673	1597	0.05	491.05	PDA Ch2 254nm@4.8nm

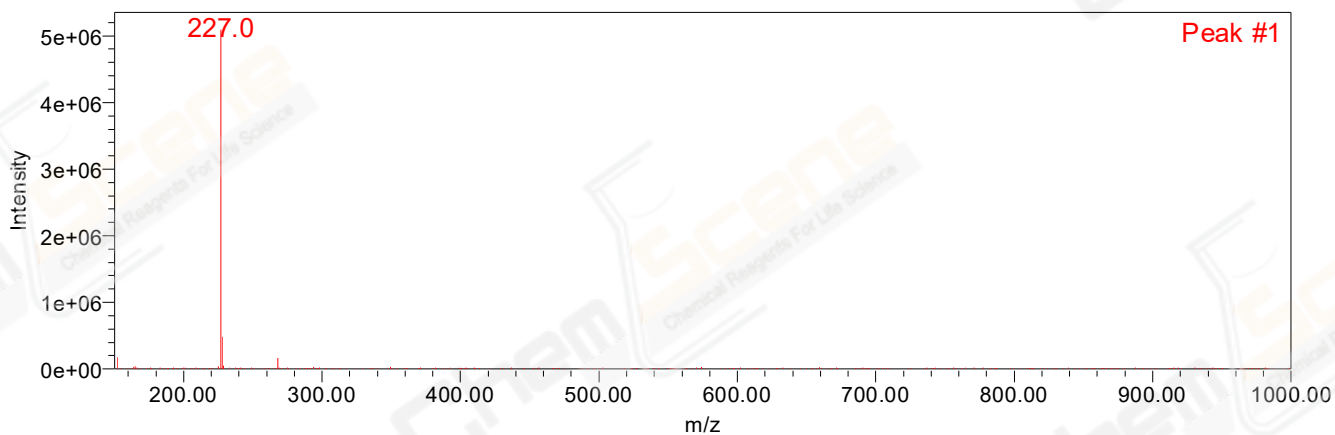
Peak Results  
Channel Name: PDA Ch1 214nm@4.8nm

	RT	Width (sec)	Area	Height	% Area	Base Peak (Combined) (m/z)	Channel Name
1	0.518	0.750	10419	23901	0.55	847.28	PDA Ch1 214nm@4.8nm
2	0.639	0.850	6785	14072	0.36	258.76	PDA Ch1 214nm@4.8nm
3	0.944	2.400	1854344	2570602	98.07	152.01	PDA Ch1 214nm@4.8nm
4	0.968	0.900	19233	40149	1.02	152.05	PDA Ch1 214nm@4.8nm

Peak Results  
Channel Name: MS TIC

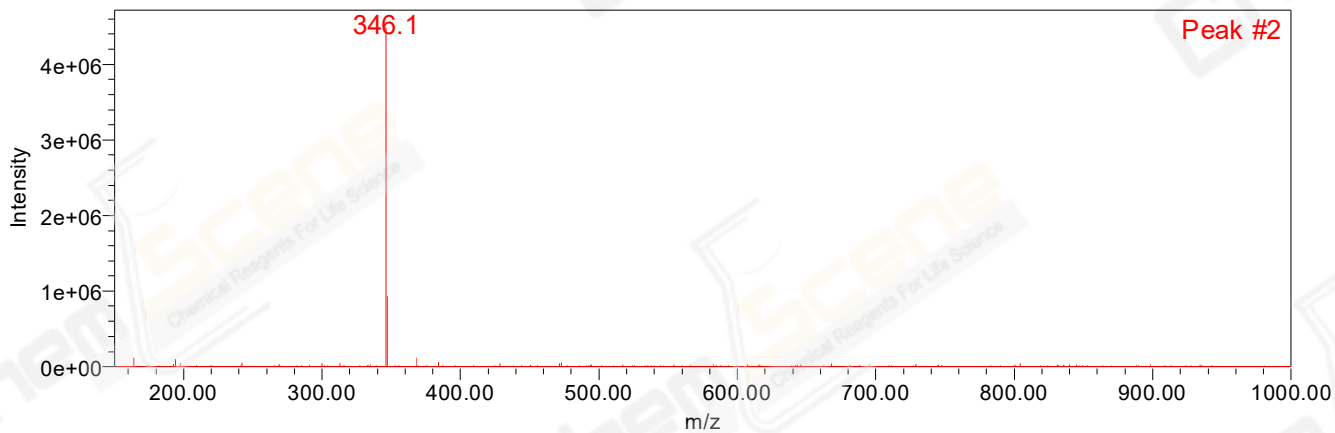
	RT	Width (sec)	Area	Height	% Area	Base Peak (Combined) (m/z)	Channel Name
1	0.522	2.902	9564403	6452808	1.55	227.00	MS TIC
2	0.644	5.223	16215303	7334117	2.63	346.07	MS TIC
3	0.947	5.513	590493153	210777763	95.82	491.07	MS TIC

Match Plot



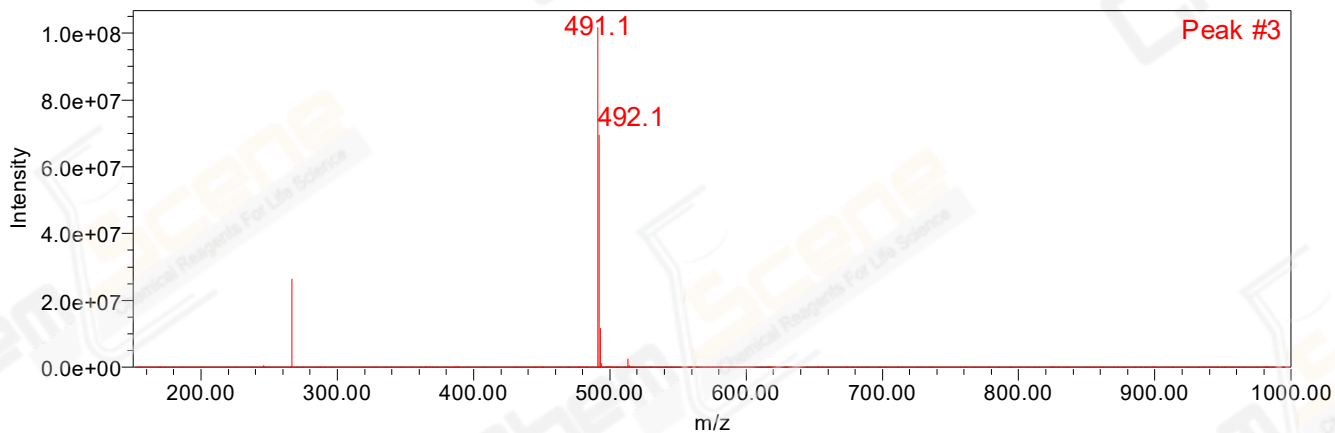
Retention Time 0.522 Channel Name MS TIC

### Match Plot



Retention Time 0.644 Channel Name MS TIC

### Match Plot



Retention Time 0.947 Channel Name MS TIC