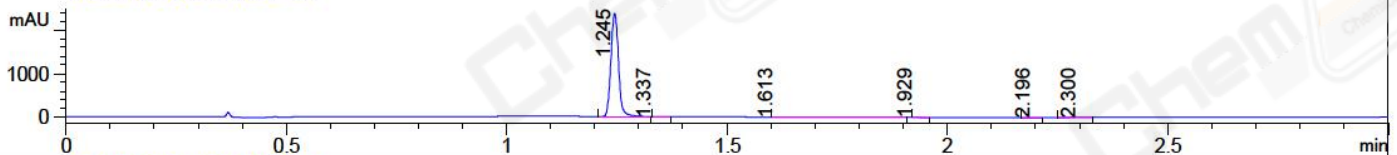
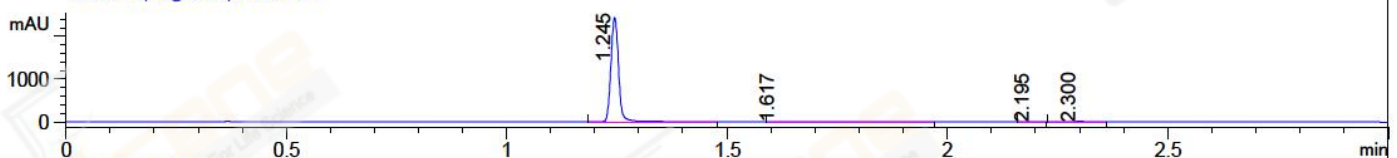


File ..Data\2018\20181204\20181204\LCD6249-001-1.D Tgt Mass (CHM):
Injection Date : 4 Dec 18 8:35 am +0800 Seq. Line : 5
Sample Name : LCD6249-001-1 Location : P1-A-04
Acq. Operator : SYSTEM Inj : 1
Spec. Reported : MS Integration Inj Volume : 1 ul
Acq. Method : D:\LCMS03\Data\2018\20181204\20181204\1-POS-3MIN.M
Analysis Method : D:\LCMS03\Data\2018\20181204\20181204\1-POS-3MIN.M
Catalog No : CS-1229 Batch#34796
Method Info : Mobile Phase: A: water(0.01%TFA) B:ACN(0.01%TFA)
Gradient: 5% to 95%B within 1.3 min
Flow Rate :1.8ml/min
Column :SunFire C18, 4.6*50mm,3.5um A-RP-186
Oven Temperature : 45C

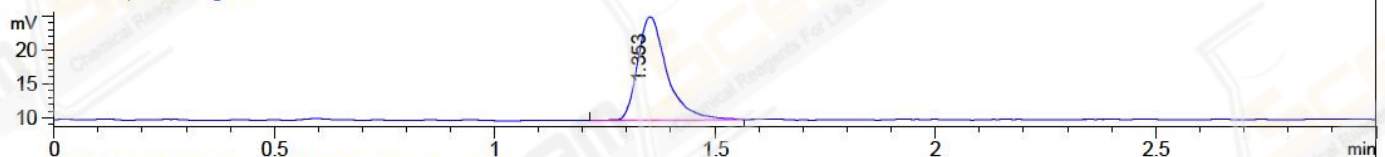
DAD1 A, Sig=214,4 Ref=off



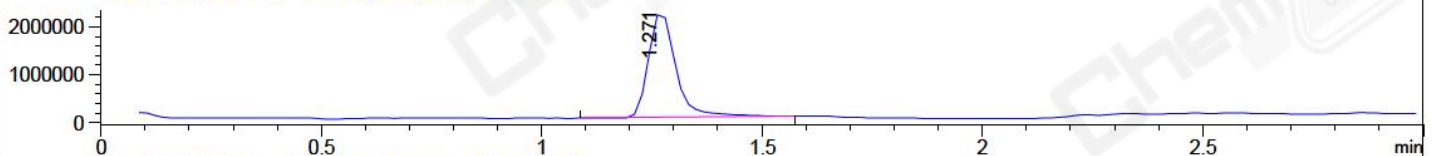
DAD1 B, Sig=254,4 Ref=off



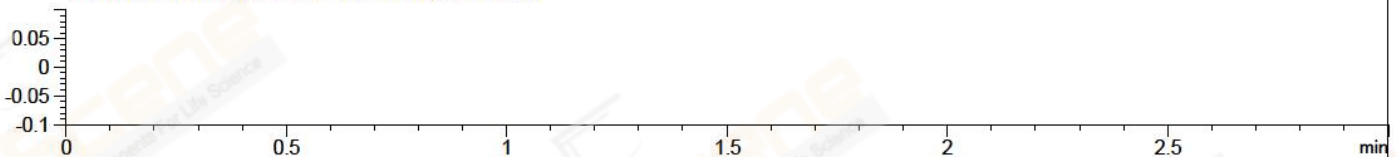
ELS1 A, ELSD Signal



MSD1 TIC, MS File ES-API, Pos, Scan, Frag: 70



Ion 1, MSD1 1, Target Mass 0 +H Positive, EIC=0.7:1.7



Integration Results for DAD1 A, Sig=214,4 Ref=off

| RetTim | Width | Area | Height | Area% | MS (+) |
|--------|-------|---------|---------|-------|--------|
| 1.25 | 0.02 | 2834.21 | 2363.55 | 99.42 | 254 |
| 1.34 | 0.02 | 0.76 | 0.48 | 0.03 | 507 |
| 1.61 | 0.08 | 7.01 | 1.10 | 0.25 | 102 |
| 1.93 | 0.03 | 0.80 | 0.49 | 0.03 | 102 |
| 2.20 | 0.02 | 2.06 | 1.50 | 0.07 | 102 |
| 2.30 | 0.03 | 5.84 | 3.51 | 0.21 | 102 |

Integration Results for DAD1 B, Sig=254,4 Ref=off

| RetTim | Width | Area | Height | Area% | MS (+) |
|--------|-------|---------|---------|-------|--------|
| 1.25 | 0.02 | 2919.07 | 2436.07 | 99.60 | 254 |
| 1.62 | 0.08 | 4.55 | 0.69 | 0.16 | 102 |
| 2.20 | 0.02 | 1.82 | 1.18 | 0.06 | 102 |
| 2.30 | 0.03 | 5.36 | 2.76 | 0.18 | 102 |

Integration Results for ELS1 A, ELSD Signal

| RetTim | Width | Area | Height | Area% | MS (+) |
|--------|-------|------|--------|-------|--------|
|--------|-------|------|--------|-------|--------|

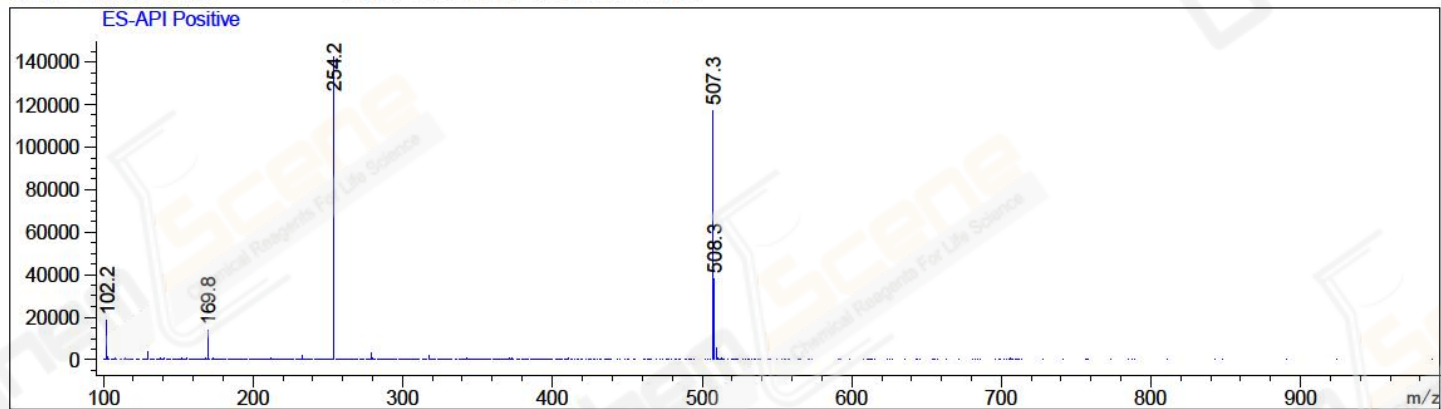
| | | | | | |
|------|------|-------|-------|--------|-----|
| 1.35 | 0.07 | 70.55 | 15.25 | 100.00 | 254 |
|------|------|-------|-------|--------|-----|

Integration Results for MSD1 TIC, MS File

| RetTim | Width | Area | Height | Area% | MS (+) |
|--------|-------|------------|------------|--------|--------|
| 1.27 | 0.07 | 9431447.00 | 2210987.25 | 100.00 | 254 |

Ret. Time: 1.27

<<<< POSITIVE SPECTRA >>>>



*** End of Report ***