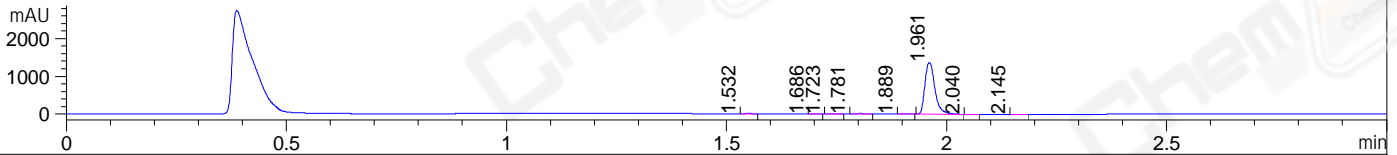
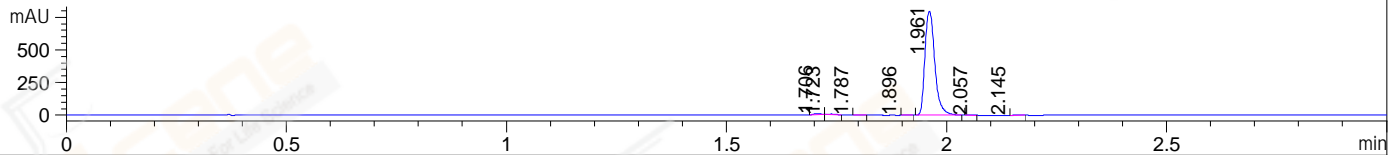


File ..Data\2018\20181128\20181128\JGL6161-011-5.D Tgt Mass (CHM):
Injection Date : 28 Nov 18 10:41 am +0800 Seq. Line : 30
Sample Name : JGL6161-011-5 Location : P1-C-07
Acq. Operator : SYSTEM Inj : 1
Spec. Reported : MS Integration Inj Volume : 1 ul
Acq. Method : D:\LCMS03\Data\2018\20181128\20181128\1-POS-3MIN.M
Analysis Method : D:\LCMS03\Data\2018\20181128\20181128\1-POS-3MIN.M
Catalog No : CS-0029985 Batch#34832
Method Info : Mobile Phase: A: water(0.01%TFA) B:ACN(0.01%TFA)
Gradient: 5% to 95%B within 1.3 min
Flow Rate :1.8ml/min
Column :SunFire C18, 4.6*50mm,3.5um A-RP-186
Oven Temperature : 45C

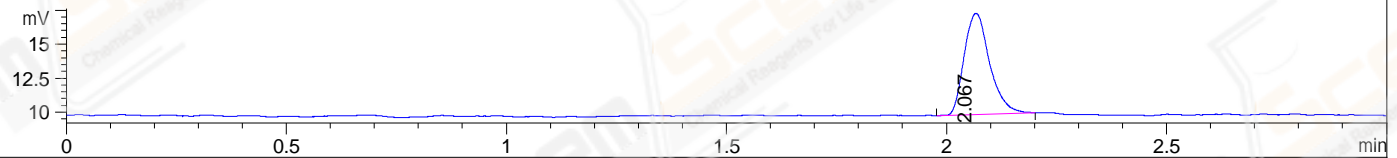
DAD1 A, Sig=214,4 Ref=off



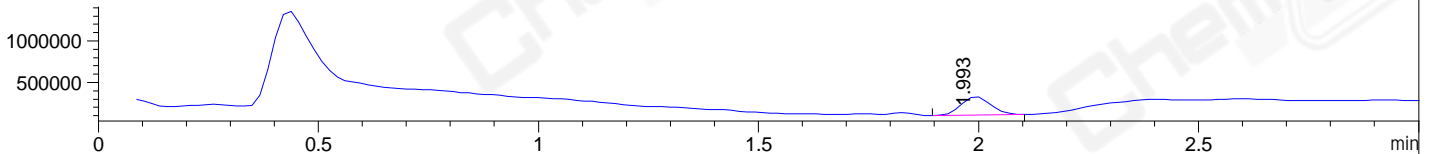
DAD1 B, Sig=254,4 Ref=off



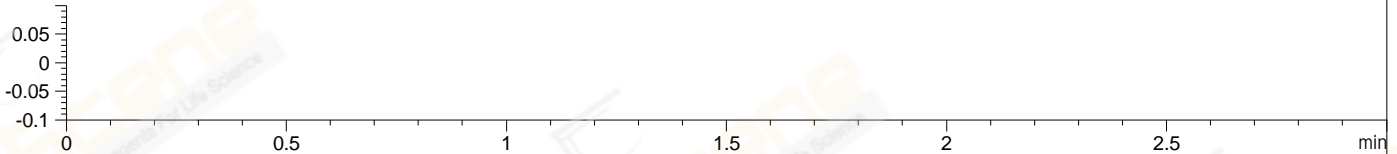
ELS1 A, ELSD Signal



MSD1 TIC, MS File ES-API, Pos, Scan, Frag: 70



Ion 1, MSD1 1, Target Mass 0 +H Positive, EIC=0.7:1.7



Integration Results for DAD1 A, Sig=214,4 Ref=off

RetTim	Width	Area	Height	Area%	MS (+)
1.53	0.02	6.45	-0.26	0.29	102
1.69	0.02	3.43	0.23	0.16	102
1.72	0.02	3.99	-0.13	0.18	102
1.78	0.02	17.24	-0.29	0.78	102
1.89	0.02	5.42	0.21	0.25	102
1.96	0.03	2154.17	1372.81	98.06	467
2.04	0.02	1.36	-0.05	0.06	102
2.14	0.02	4.70	0.13	0.21	102

Integration Results for DAD1 B, Sig=254,4 Ref=off

RetTim	Width	Area	Height	Area%	MS (+)
1.71	0.02	10.79	9.50	0.85	102
1.72	0.02	6.70	0.06	0.53	102
1.79	0.02	3.15	-0.00	0.25	102
1.90	0.02	1.89	0.10	0.15	102
1.96	0.03	1238.16	795.57	98.04	467
2.06	0.02	0.79	0.76	0.06	102

2.14 0.02 1.48 -0.06 0.12 102

Integration Results for ELS1 A, ELSD Signal

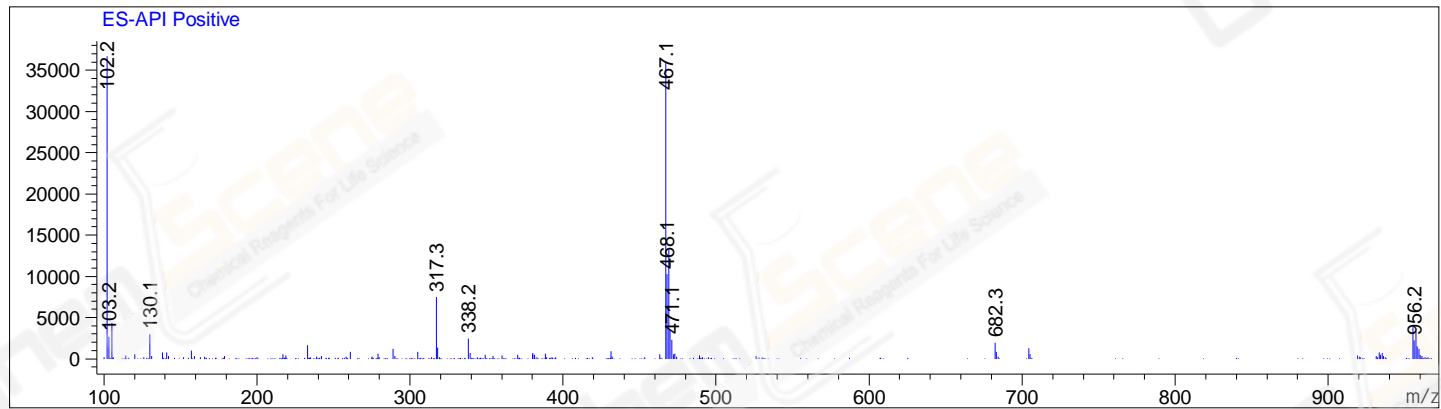
RetTim	Width	Area	Height	Area%	MS (+)
2.07	0.06	30.04	7.43	100.00	102

Integration Results for MSD1 TIC, MS File

RetTim	Width	Area	Height	Area%	MS (+)
1.99	0.08	1028858.38	220010.05	100.00	102

Ret. Time: 1.99

<<<< POSITIVE SPECTRA >>>>



*** End of Report ***