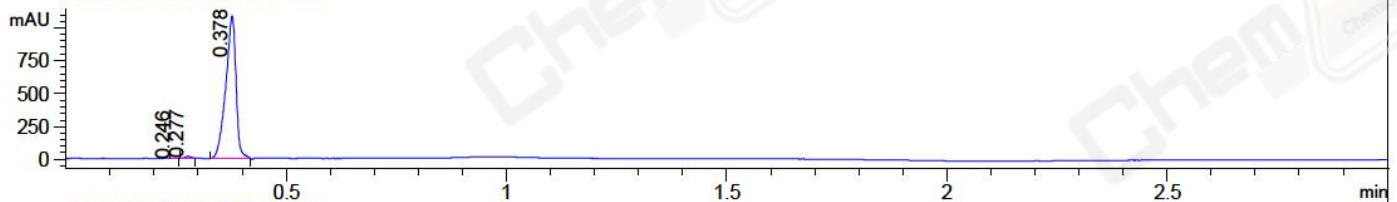
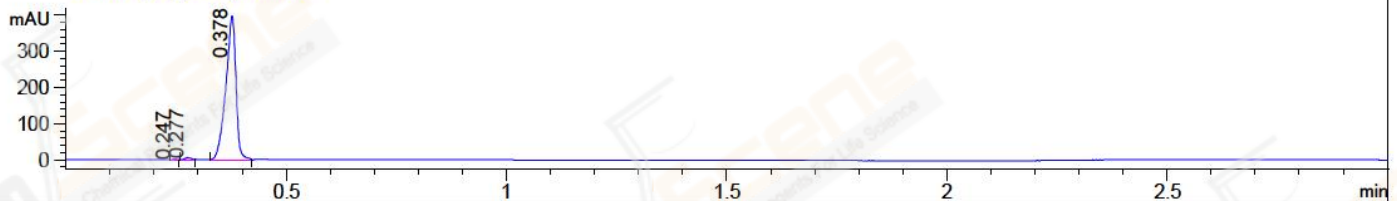


File ..1\DATA\2018\20181214\519\BIZ2018-D14-WYQ2.D Tgt Mass (CHM):
 Injection Date : 14 Dec 18 1:18 pm +0800 Seq. Line : 6
 Sample Name : BIZ2018-D14-WYQ2 Location : P2-C-05
 Acq. Operator : LQ_1052 Inj : 1
 Spec. Reported : MS Integration Inj Volume : 1 ul
 Acq. Method : D:\Chem32\1\data\2018\20181214\519\1-POS-3MIN-1.M
 Analysis Method : D:\CHEM32\1\DATA\2018\20181214\519\1-POS-3MIN-1.M
 Catalog No : CS-1110 Batch#35386 A-RP-314
 Method Info : Mobile Phase: A: water(0.01%TFA) B:ACN(0.01%TFA)
 Gradient: 5% to 95%B within 1.3 min
 Flow Rate :1.8ml/min
 Column :SunFire C18, 4.6*50mm,3.5um A-RP-314
 Oven Temperature : 45□

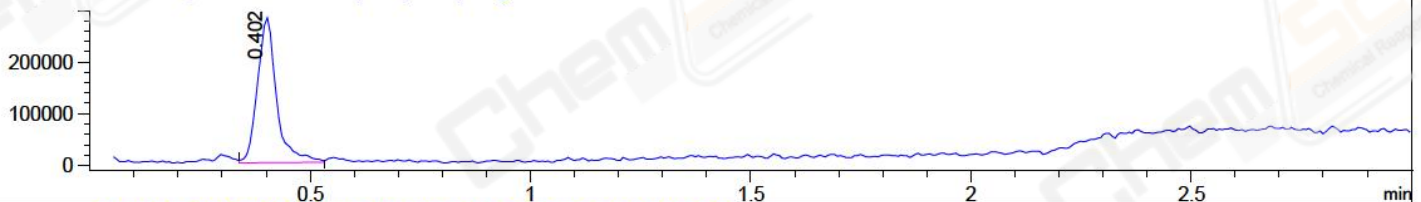
DAD1 B, Sig=214,4 Ref=off



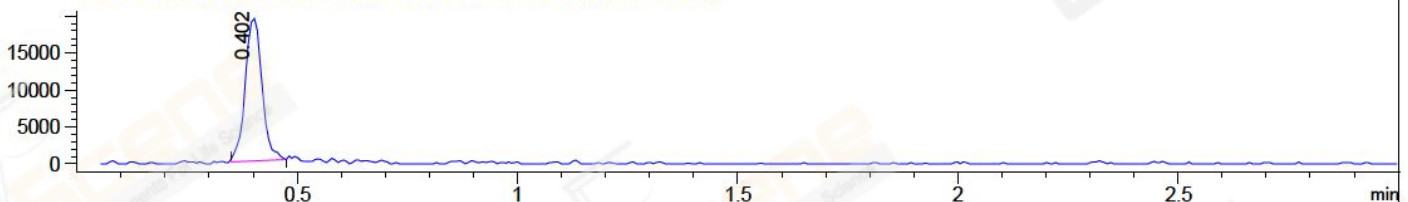
DAD1 C, Sig=254,4 Ref=off



MSD1 TIC, MS File ES-API, Pos, Scan, Frag: 70



Ion 212.1, MSD1 212.1, Target Mass 211.1 +H Positive, EIC=211.8:212.8



Integration Results for DAD1 B, Sig=214,4 Ref=off

RetTim	Width	Area	Height	Area%	MS (+)
0.25	0.01	0.74	1.22	0.04	187
0.28	0.01	13.29	13.73	0.76	187
0.38	0.03	1743.64	1084.48	99.20	423

Integration Results for DAD1 C, Sig=254,4 Ref=off

RetTim	Width	Area	Height	Area%	MS (+)
0.25	0.01	0.46	0.65	0.07	187
0.28	0.01	5.22	5.56	0.82	187
0.38	0.03	633.72	398.94	99.11	423

Integration Results for MSD1 TIC, MS File

RetTim	Width	Area	Height	Area%	MS (+)
0.40	0.04	844014.31	281017.06	100.00	423

Ret. Time: 0.40

<<<< POSITIVE SPECTRA >>>>

