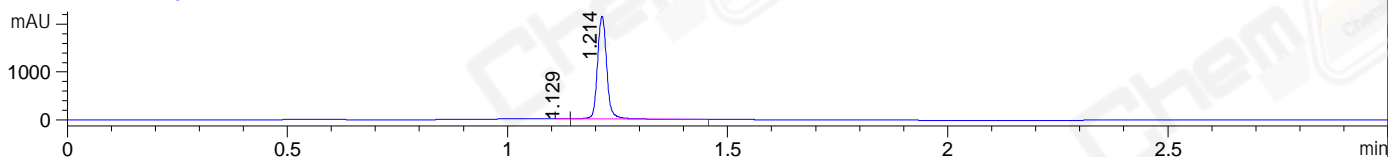
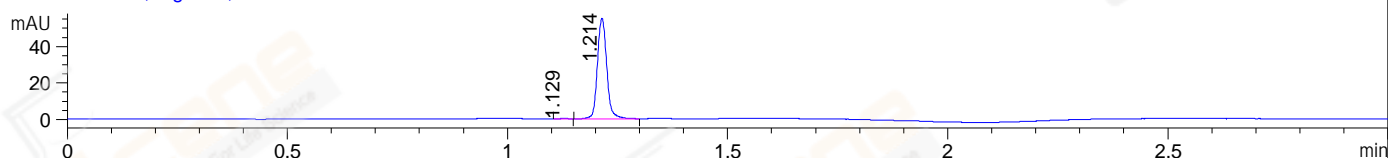


File ..Data\2018\20181214\20181214\SQS6263-003-1.D Tgt Mass (CHM):  
 Injection Date : 14 Dec 18 1:49 pm +0800 Seq. Line : 61  
 Sample Name : SQS6263-003-1 Location : P1-D-09  
 Acq. Operator : SYSTEM Inj : 1  
 Spec. Reported : MS Integration Inj Volume : 1 ul  
 Acq. Method : D:\LCMS03\Data\2018\20181214\20181214\1-POS-3MIN.M  
 Analysis Method : D:\LCMS03\Data\2018\20181214\20181214\1-POS-3MIN.M  
 Catalog No : CS-5982 Batch#35518  
 Method Info : Mobile Phase: A: water(0.01%TFA) B:ACN(0.01%TFA)  
 Gradient: 5% to 95%B within 1.3 min  
 Flow Rate :1.8ml/min  
 Column :SunFire C18, 4.6\*50mm,3.5um A-RP-186  
 Oven Temperature : 45C

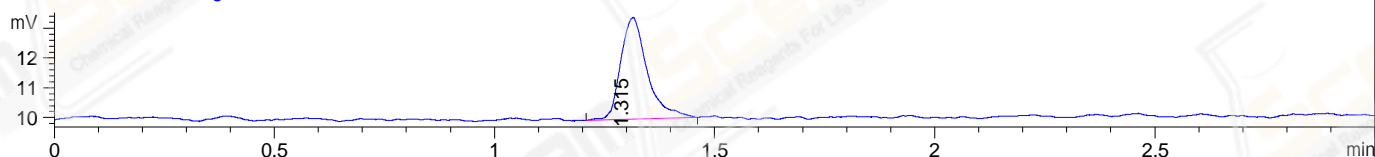
DAD1 A, Sig=214,4 Ref=off



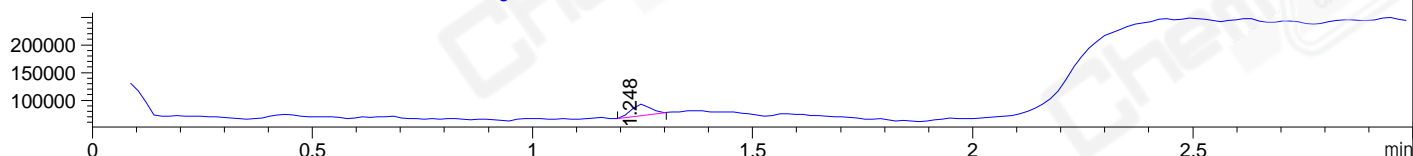
DAD1 B, Sig=254,4 Ref=off



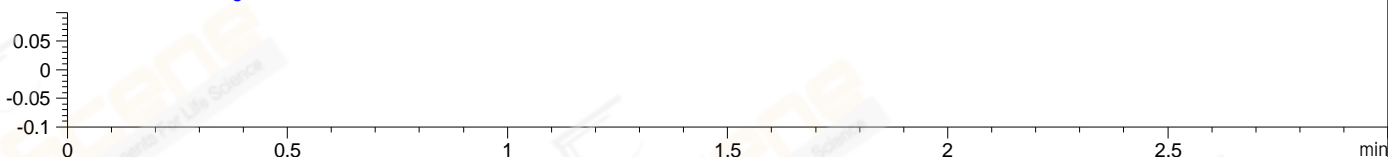
ELS1 A, ELSD Signal



MSD1 TIC, MS File ES-API, Pos, Scan, Frag: 70



Ion 1, MSD1 1, Target Mass 0 +H Positive, EIC=0.7:1.7



Integration Results for DAD1 A, Sig=214,4 Ref=off

RetTim	Width	Area	Height	Area%	MS (+)
1.13	0.02	1.51	1.46	0.05	130
1.21	0.02	3115.36	2140.20	99.95	130

Integration Results for DAD1 B, Sig=254,4 Ref=off

RetTim	Width	Area	Height	Area%	MS (+)
1.13	0.02	0.49	0.39	0.60	130
1.21	0.02	81.60	55.12	99.40	130

Integration Results for ELS1 A, ELSD Signal

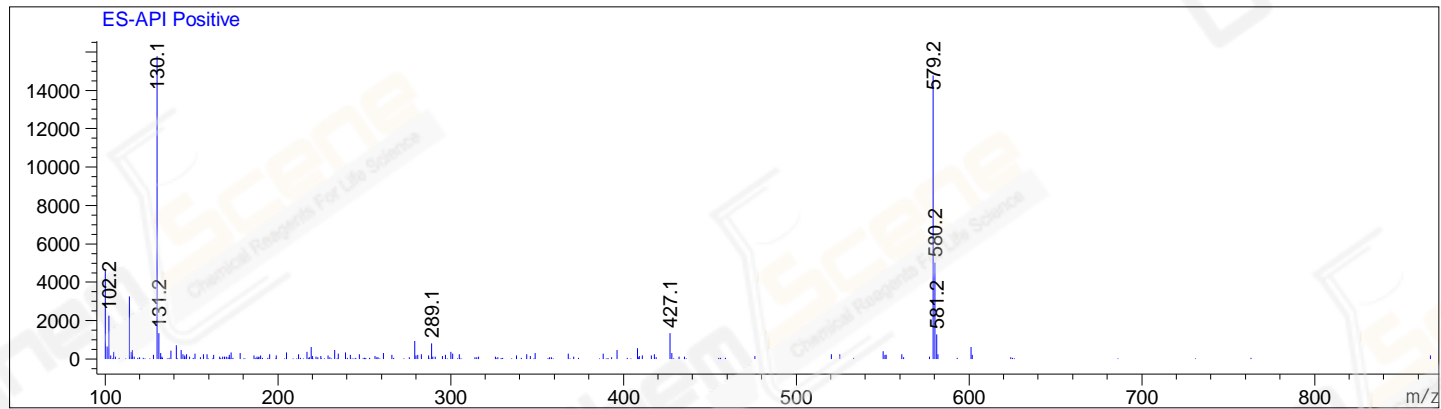
RetTim	Width	Area	Height	Area%	MS (+)
1.31	0.07	14.37	3.42	100.00	130

Integration Results for MSD1 TIC, MS File

1.25      0.05      64807.18      20743.85      100.00      130

RetTim	Width	Area	Height	Area%	MS (+)
1.25	0.05	64807.18	20743.85	100.00	130

Ret. Time: 1.25 <<<< POSITIVE SPECTRA >>>>



\*\*\* End of Report \*\*\*