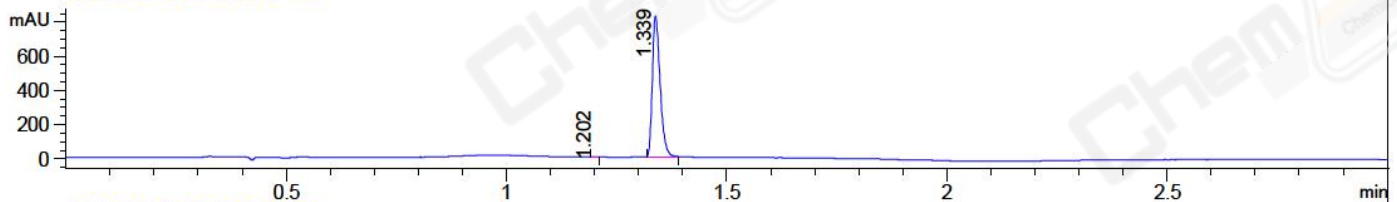
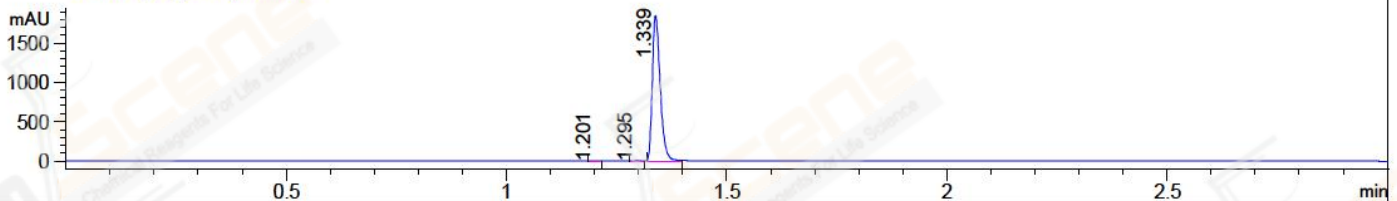


File ..1\DATA\2018\20181225\546\BIZ2018-D25-WYQ2.D Tgt Mass (CHM):  
 Injection Date : 25 Dec 18 5:07 pm +0800 Seq. Line : 6  
 Sample Name : BIZ2018-D25-WYQ2 Location : P2-B-04  
 Acq. Operator : LQ\_1052 Inj : 1  
 Spec. Reported : MS Integration Inj Volume : 1 ul  
 Acq. Method : D:\Chem32\1\data\2018\20181225\546\1-POS-3MIN-1.M  
 Analysis Method : D:\CHEM32\1\DATA\2018\20181225\546\1-POS-3MIN-1.M  
 Catalog No : CS-7513 Batch#36014  
 Method Info : Mobile Phase: A: water(0.01%TFA) B:ACN(0.01%TFA)  
 Gradient: 5% to 95%B within 1.3 min  
 Flow Rate :1.8ml/min  
 Column :SunFire C18, 4.6\*50mm,3.5um A-RP-314  
 Oven Temperature : 45□

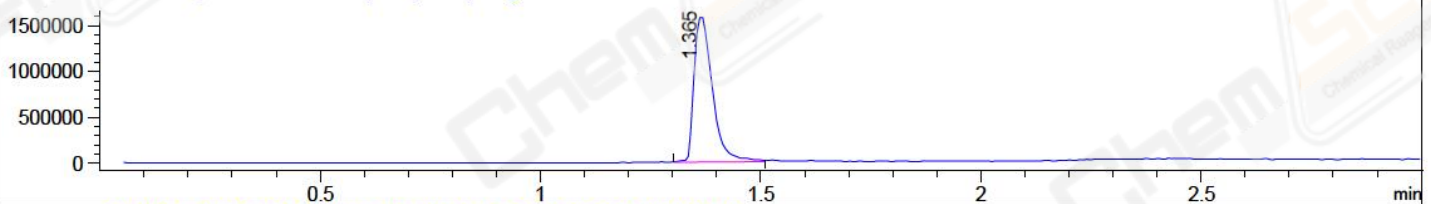
DAD1 B, Sig=214,4 Ref=off



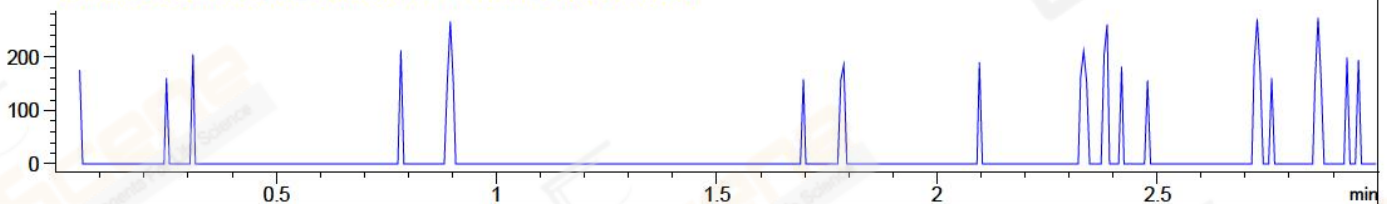
DAD1 C, Sig=254,4 Ref=off



MSD1 TIC, MS File ES-API, Pos, Scan, Frag: 70



Ion 302.1, MSD1 302.1, Target Mass 301.1 +H Positive, EIC=301.8:302.8



Integration Results for DAD1 B, Sig=214,4 Ref=off

| RetTim | Width | Area    | Height | Area% | MS (+) |
|--------|-------|---------|--------|-------|--------|
| 1.20   | 0.01  | 1.42    | 1.78   | 0.14  | ND     |
| 1.34   | 0.02  | 1022.88 | 828.38 | 99.86 | 266    |

Integration Results for DAD1 C, Sig=254,4 Ref=off

| RetTim | Width | Area    | Height  | Area% | MS (+) |
|--------|-------|---------|---------|-------|--------|
| 1.20   | 0.02  | 2.01    | 2.06    | 0.09  | 280    |
| 1.29   | 0.02  | 3.34    | 2.83    | 0.14  | 252    |
| 1.34   | 0.02  | 2305.05 | 1844.76 | 99.77 | 266    |

Integration Results for MSD1 TIC, MS File

| RetTim | Width | Area       | Height     | Area%  | MS (+) |
|--------|-------|------------|------------|--------|--------|
| 1.37   | 0.05  | 4638879.50 | 1596570.75 | 100.00 | 266    |

Ret. Time: 1.37

<<<< POSITIVE SPECTRA >>>>

ES-API Positive

