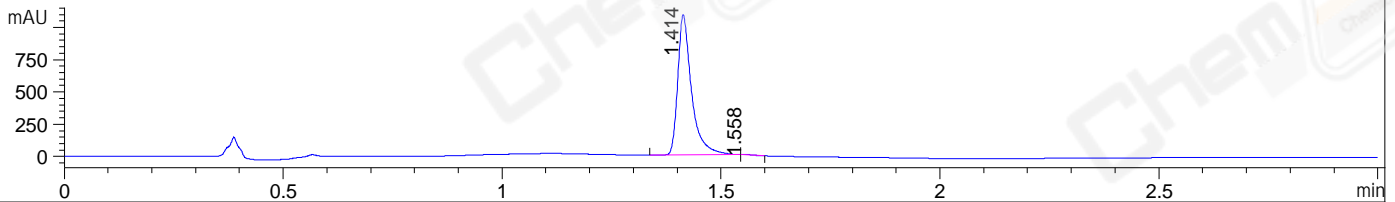
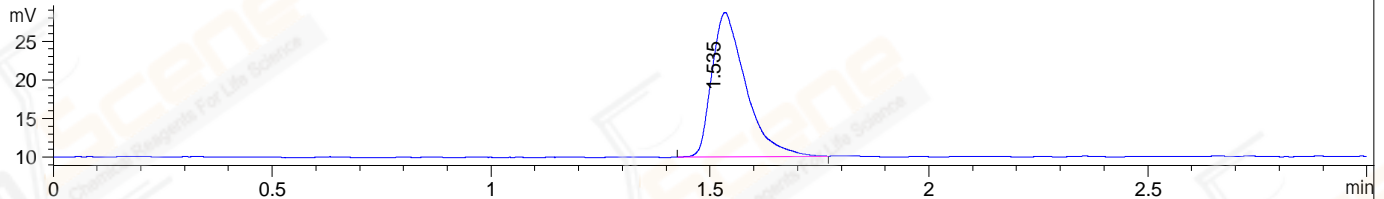


File ..2018\20181228\20181228\BIZ2018-D28-WYQ4.D Tgt Mass (CHM):
 Injection Date : 28 Dec 18 2:15 pm +0800 Seq. Line : 66
 Sample Name : BIZ2018-D28-WYQ4 Location : P1-E-07
 Acq. Operator : SYSTEM Inj : 1
 Spec. Reported : MS Integration Inj Volume : 10 ul
 Acq. Method : D:\LCMS03\Data\2018\20181228\20181228\1-POS-3MIN(100-1500).M
 Analysis Method : D:\LCMS03\Data\2018\20181228\20181228\1-POS-3MIN(100-1500).M
 Catalog No : CS-0578 Batch#36198
 Method Info : Mobile Phase: A: water(0.01%TFA) B:ACN(0.01%TFA)
 Gradient: 5% to 95%B within 1.3 min
 Flow Rate :1.8ml/min
 Column :SunFire C18, 4.6*50mm,3.5um A-RP-186
 Oven Temperature : 45C

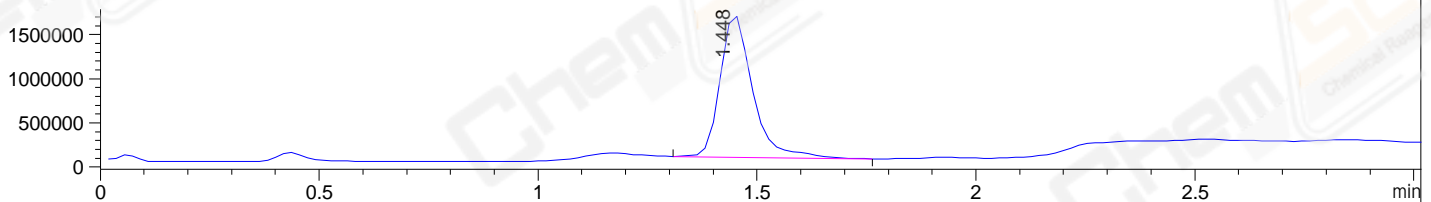
DAD1 A, Sig=214,4 Ref=off



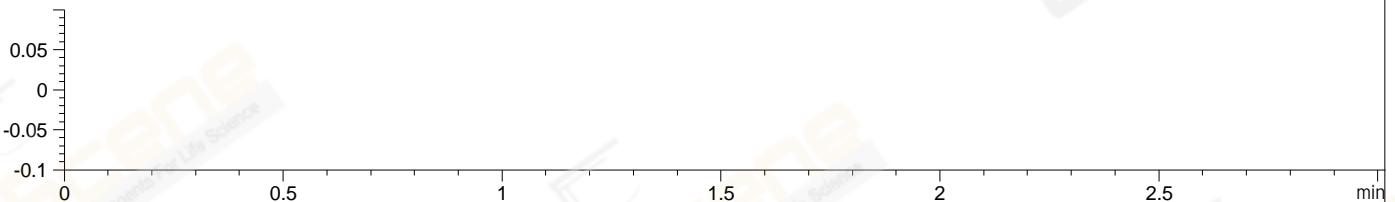
ELS1 A, ELSD Signal



MSD1 TIC, MS File ES-API, Pos, Scan, Frag: 70



Ion 1, MSD1 1, Target Mass 0 +H Positive, EIC=0.7:1.7



Integration Results for DAD1 A, Sig=214,4 Ref=off

RetTim	Width	Area	Height	Area%	MS (+)
1.41	0.03	2378.95	1087.47	99.79	548
1.56	0.02	5.04	3.67	0.21	548

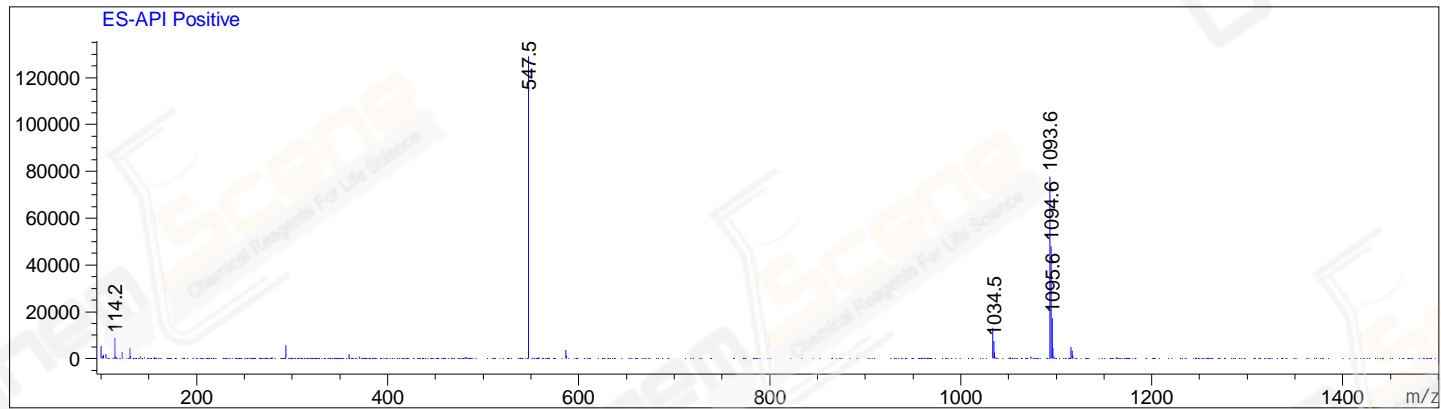
Integration Results for ELS1 A, ELSD Signal

RetTim	Width	Area	Height	Area%	MS (+)
1.53	0.08	100.45	18.68	100.00	548

Integration Results for MSD1 TIC, MS File

RetTim	Width	Area	Height	Area%	MS (+)
1.45	0.08	8331130.00	1622098.38	100.00	548

Ret. Time: 1.45 <<<< POSITIVE SPECTRA >>>>



*** End of Report ***