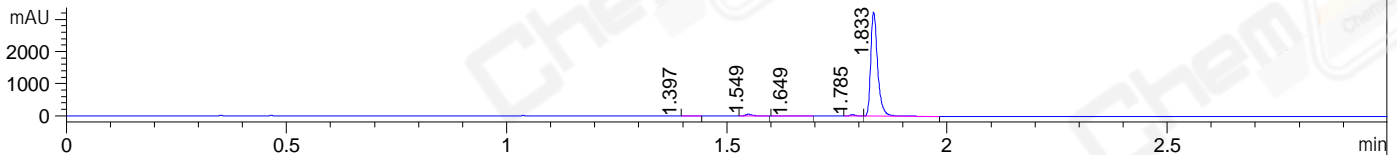
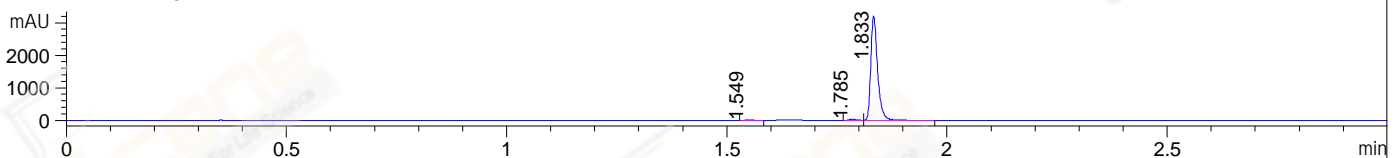


File ..CMS03\Data\20190105\20190105\HP6326-003-1.D Tgt Mass (CHM):  
Injection Date : 5 Jan 19 4:32 pm +0800 Seq. Line : 83  
Sample Name : HP6326-003-1 Location : P2-A-03  
Acq. Operator : SYSTEM Inj : 1  
Spec. Reported : MS Integration Inj Volume : 1 ul  
Acq. Method : D:\LCMS03\Data\20190105\20190105\1-POS-3MIN.M  
Analysis Method : D:\LCMS03\Data\20190105\20190105\1-POS-3MIN.M  
Catalog No : CS-0081672 Batch#36497  
Method Info : Mobile Phase: A: water(0.01%TFA) B:ACN(0.01%TFA)  
Gradient: 5% to 95%B within 1.3 min  
Flow Rate :1.8ml/min  
Column :SunFire C18, 4.6\*50mm,3.5um A-RP-186  
Oven Temperature : 45C

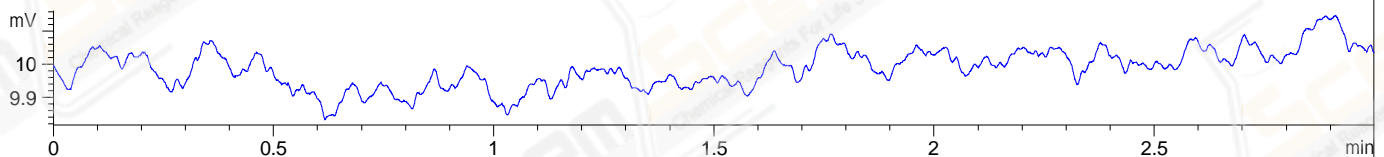
DAD1 A, Sig=214,4 Ref=off



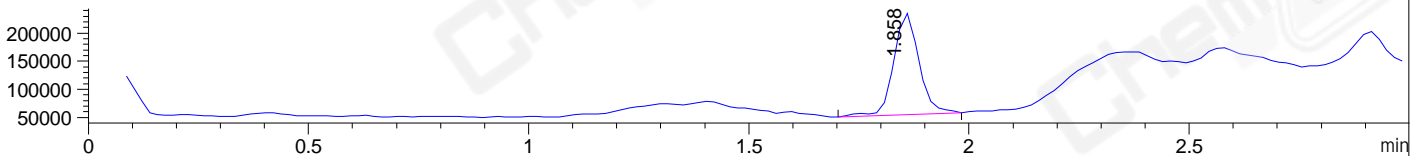
DAD1 B, Sig=254,4 Ref=off



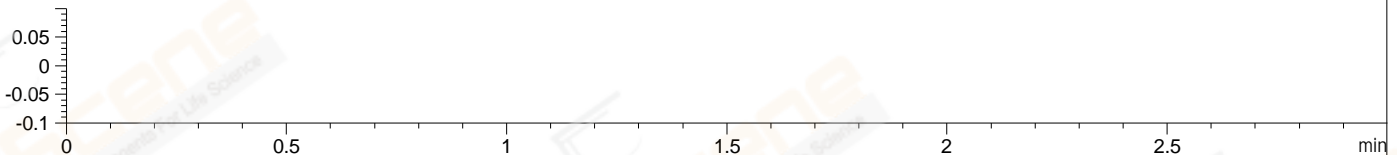
ELS1 A, ELSD Signal



MSD1 TIC, MS File ES-API, Pos, Scan, Frag: 70



Ion 1, MSD1 1, Target Mass 0 +H Positive, EIC=0.7:1.7



Integration Results for DAD1 A, Sig=214,4 Ref=off

RetTim	Width	Area	Height	Area%	MS (+)
1.40	0.02	3.60	-0.06	0.10	114
1.55	0.02	52.09	51.83	1.45	114
1.65	0.05	3.42	1.13	0.10	114
1.78	0.01	34.16	35.91	0.95	114
1.83	0.02	3499.37	3221.17	97.40	114

Integration Results for DAD1 B, Sig=254,4 Ref=off

RetTim	Width	Area	Height	Area%	MS (+)
1.55	0.02	10.67	10.76	0.31	114
1.78	0.02	36.21	36.61	1.04	114
1.83	0.02	3437.60	3196.87	98.65	114

Integration Results for ELS1 A, ELSD Signal

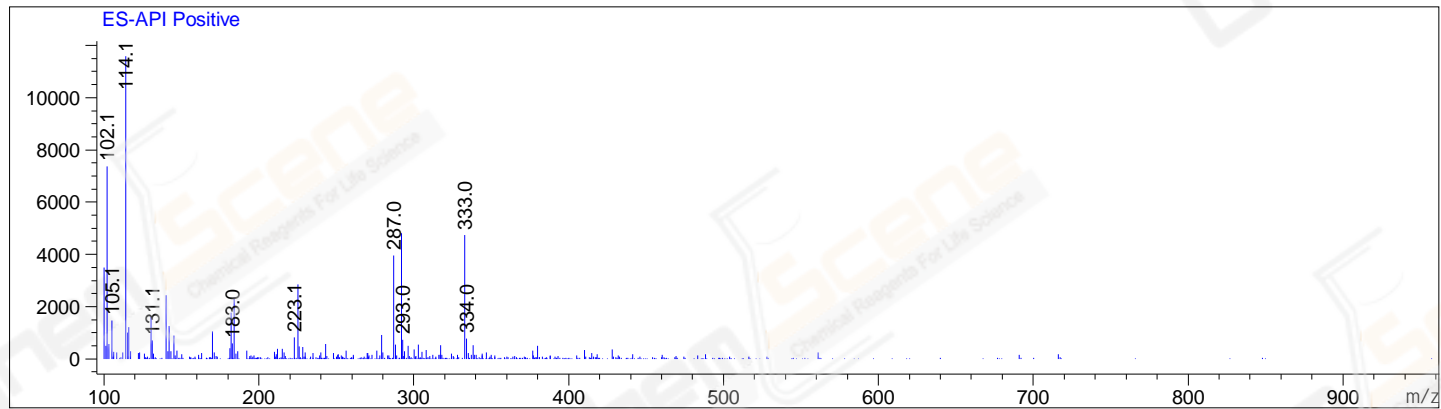
RetTim	Width	Area	Height	Area%	MS (+)
--------	-------	------	--------	-------	--------

## Integration Results for MSD1 TIC, MS File

RetTime	Width	Area	Height	Area%	MS (+)
1.86	0.06	709800.06	180415.75	100.00	114

Ret. Time: 1.86

<<<< POSITIVE SPECTRA >>>>



\*\*\* End of Report \*\*\*