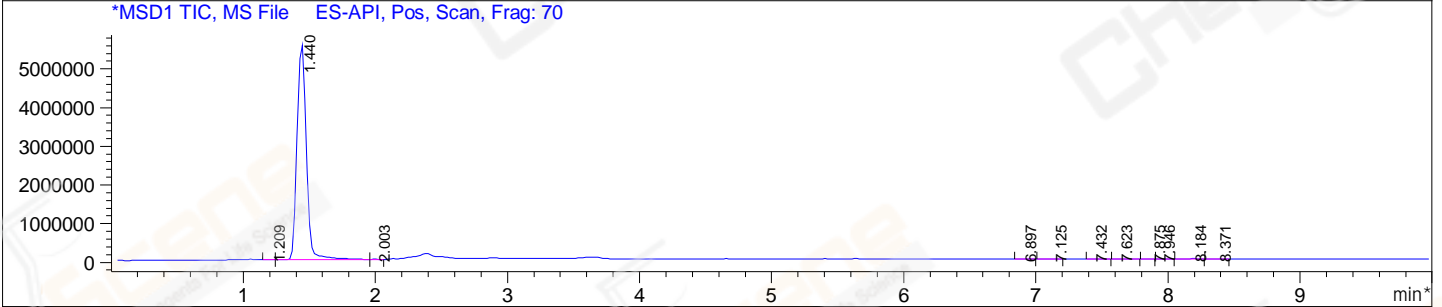
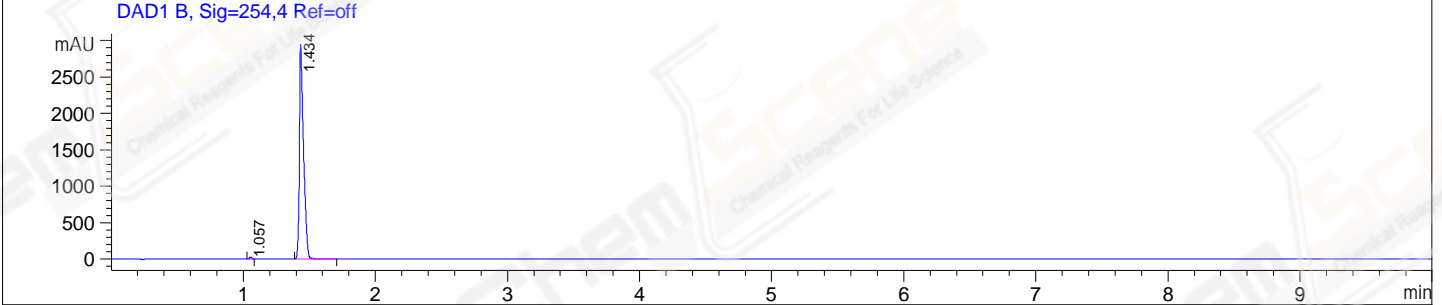
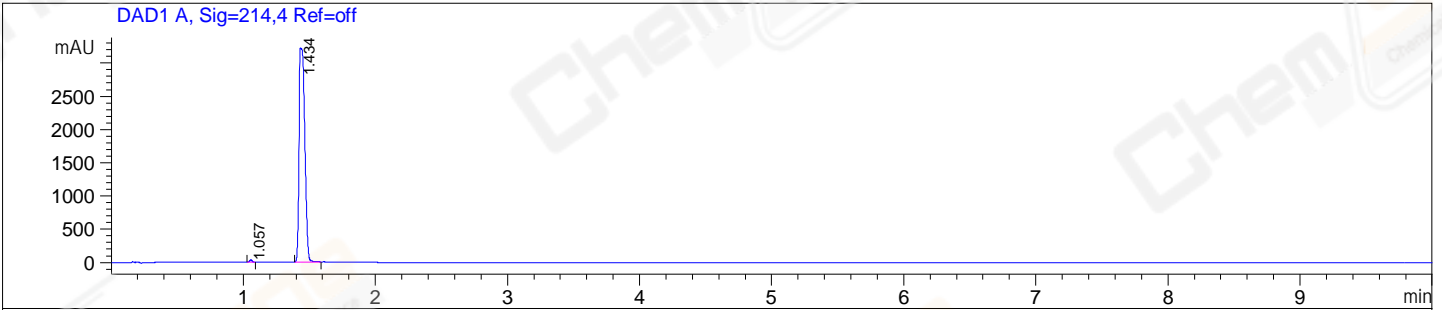


File E:\ChemStation\1\DATA\2024\2024-03\2024-03-13\BIZ2024-312-SCH11-UPLC-MS-10-028782.D
 Injection Date : 13-Mar-24, 13:53:08 Tgt Mass(EZX) :
 Sample Name : BIZ2024-312-SCH11 Location : P1-F-01
 Acq. Operator : LY_2278 Inj : 1
 Spec. Reported : MS Integration Inj Volume : 5 ul
 Acq. Method : E:\ChemStation\1\Methods\1-POS-UPLC10.0MIN(1.2)(150-2000)polar.M
 Analysis Method : E:\CHEMSTATION\1\METHODS\1-POS-UPLC10.0MIN(1.2)(150-2000)polar.M
 CAS NO. : 82626-01-5 WalkUp method: '1-POS-UPLC10.0MIN(1.2)(150-2000)polar' Project:
 Method Info : Mobile Phase: A: water(0.01%TFA) B:ACN(0.01%TFA)
 Gradient: 5% to 95%B within 2.0 min
 Flow Rate :1.2ml/min
 Column :Shim-pack Scepter C18-120, 3.0*33mm,3um
 Oven Temperature : 45C



Integration Results for DAD1 A, Sig=214,4 Ref=off

RetTim	Width	Area	Height	Area%
1.06	0.02	49.56	35.46	0.51
1.43	0.04	9696.58	3218.75	99.49

Integration Results for DAD1 B, Sig=254,4 Ref=off

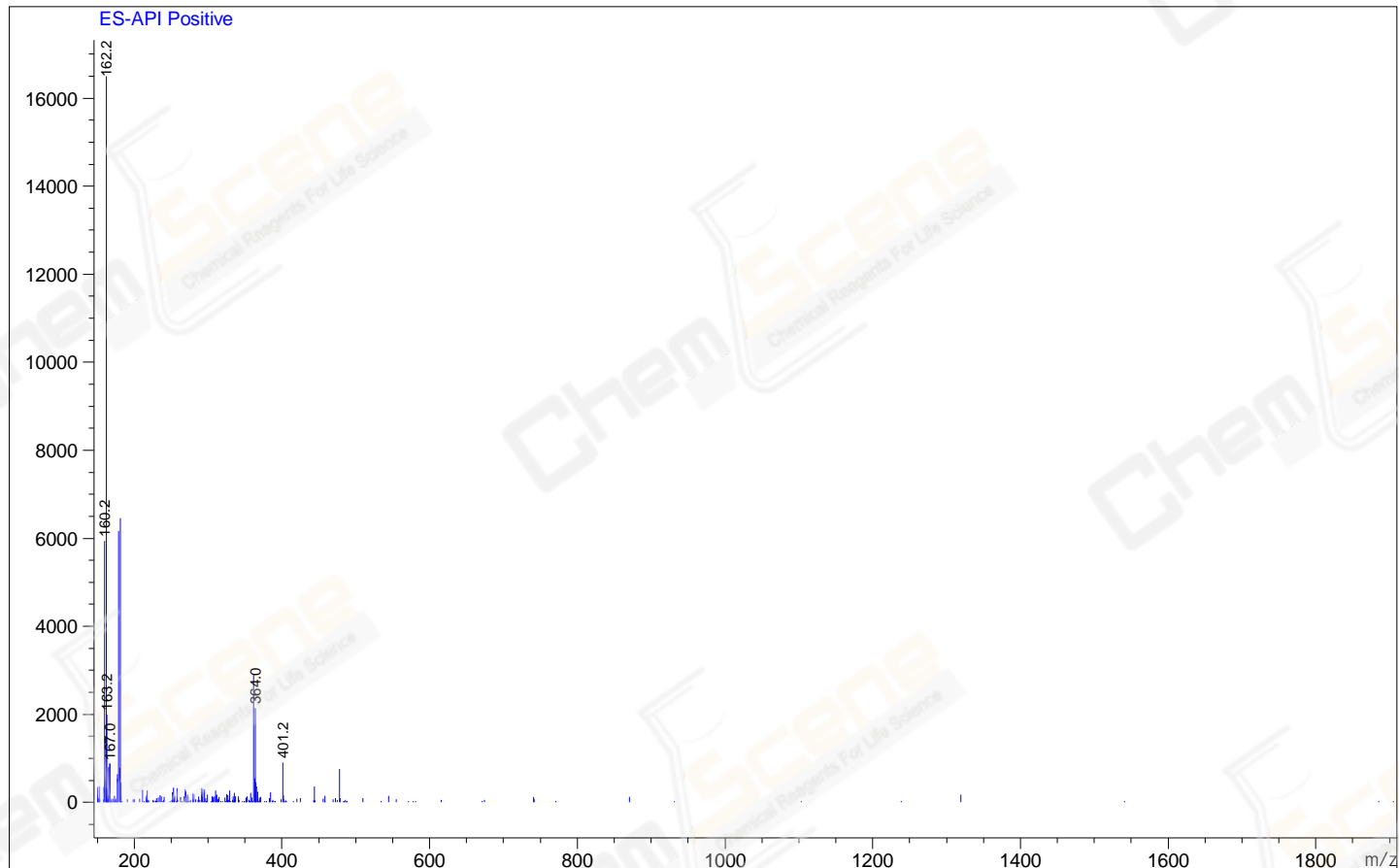
RetTim	Width	Area	Height	Area%
1.06	0.02	33.08	25.16	0.51
1.43	0.03	6403.91	2945.69	99.49

Integration Results for MSD1 TIC, MS File

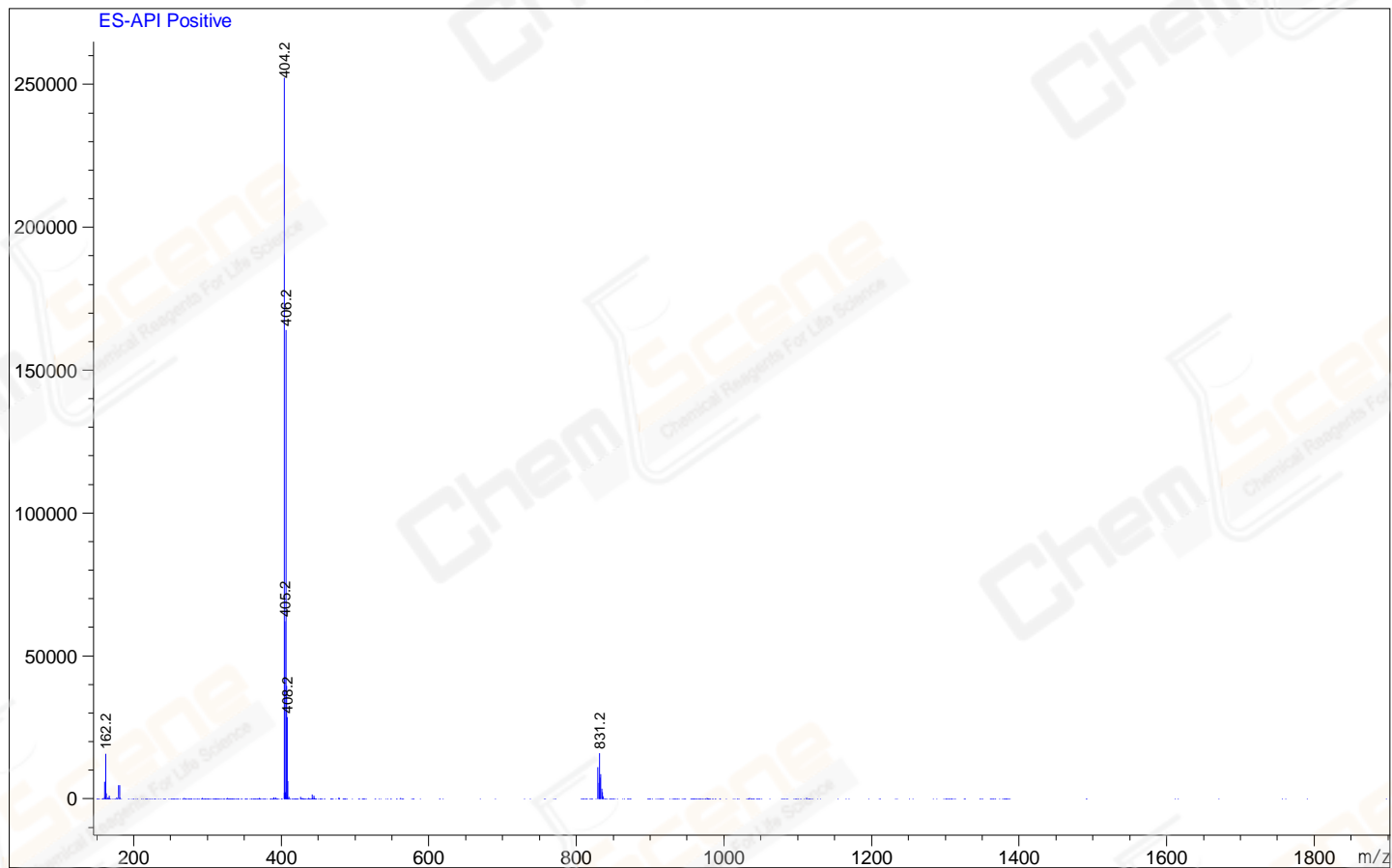
RetTim	Width	Area	Height	Area%
1.21	0.06	20769.90	6267.63	0.08
1.44	0.08	26760758.00	5613532.00	99.04
2.00	0.05	16031.46	5816.40	0.06
6.90	0.08	21951.46	4248.91	0.08
7.13	0.10	33555.15	4835.51	0.12

7.43	0.09	42881.20	6575.47	0.16
7.62	0.09	19429.75	3056.70	0.07
7.87	0.06	8842.59	2608.70	0.03
7.95	0.07	12836.80	2931.22	0.05
8.18	0.09	54142.87	8239.46	0.20
8.37	0.08	30277.15	5455.45	0.11

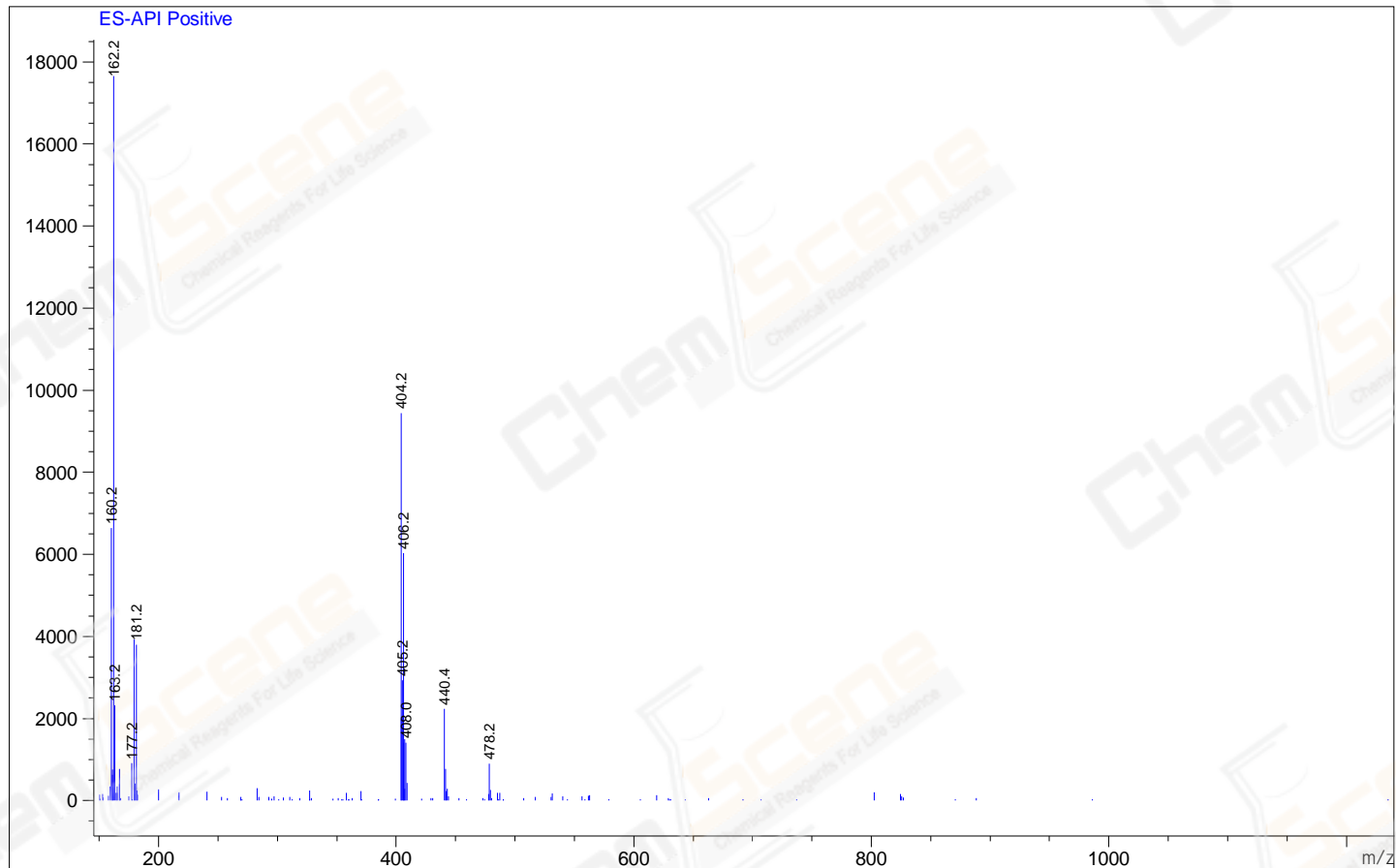
Ret. Time: 1.21 <<<< POSITIVE SPECTRA >>>>



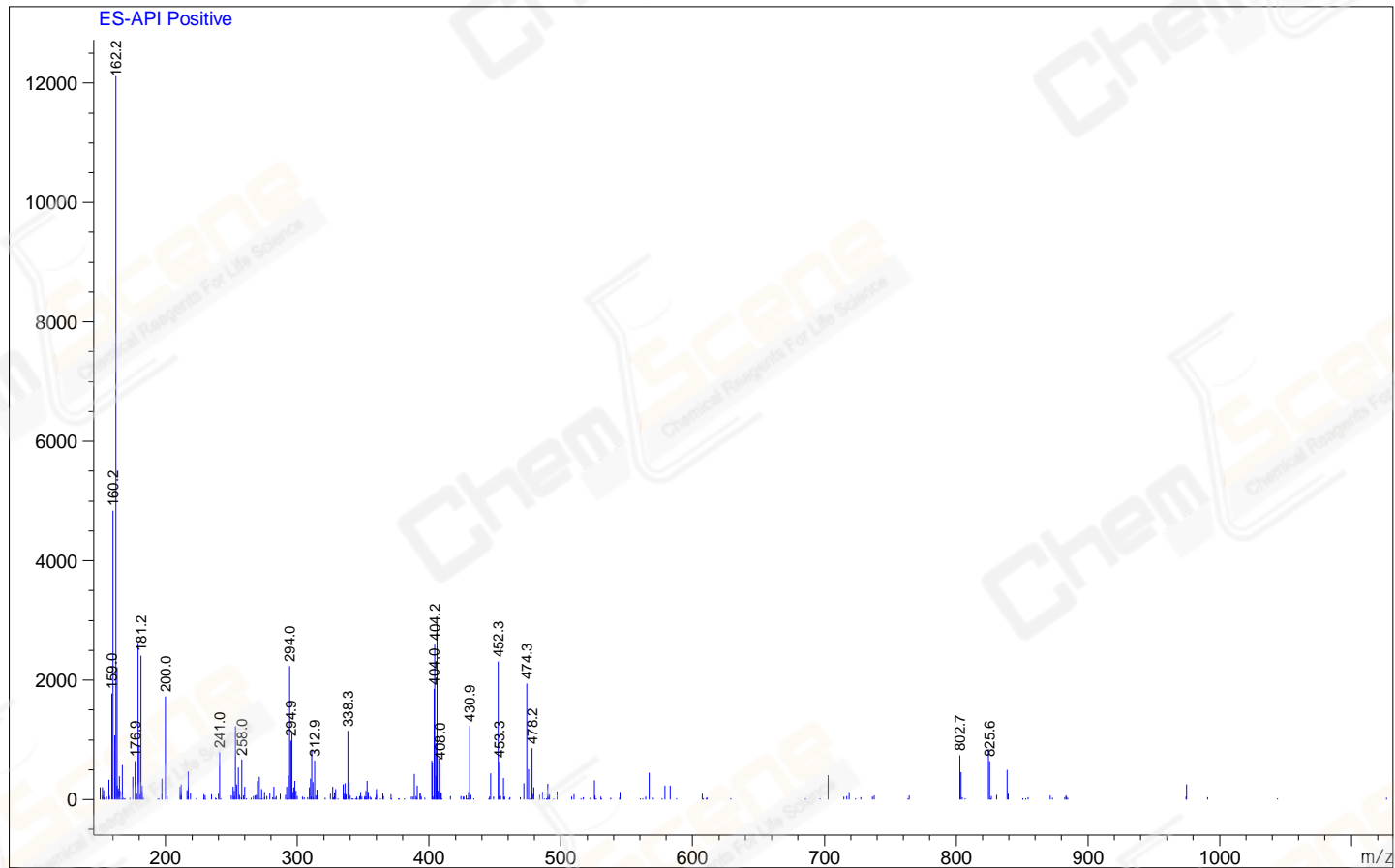
Ret. Time: 1.44



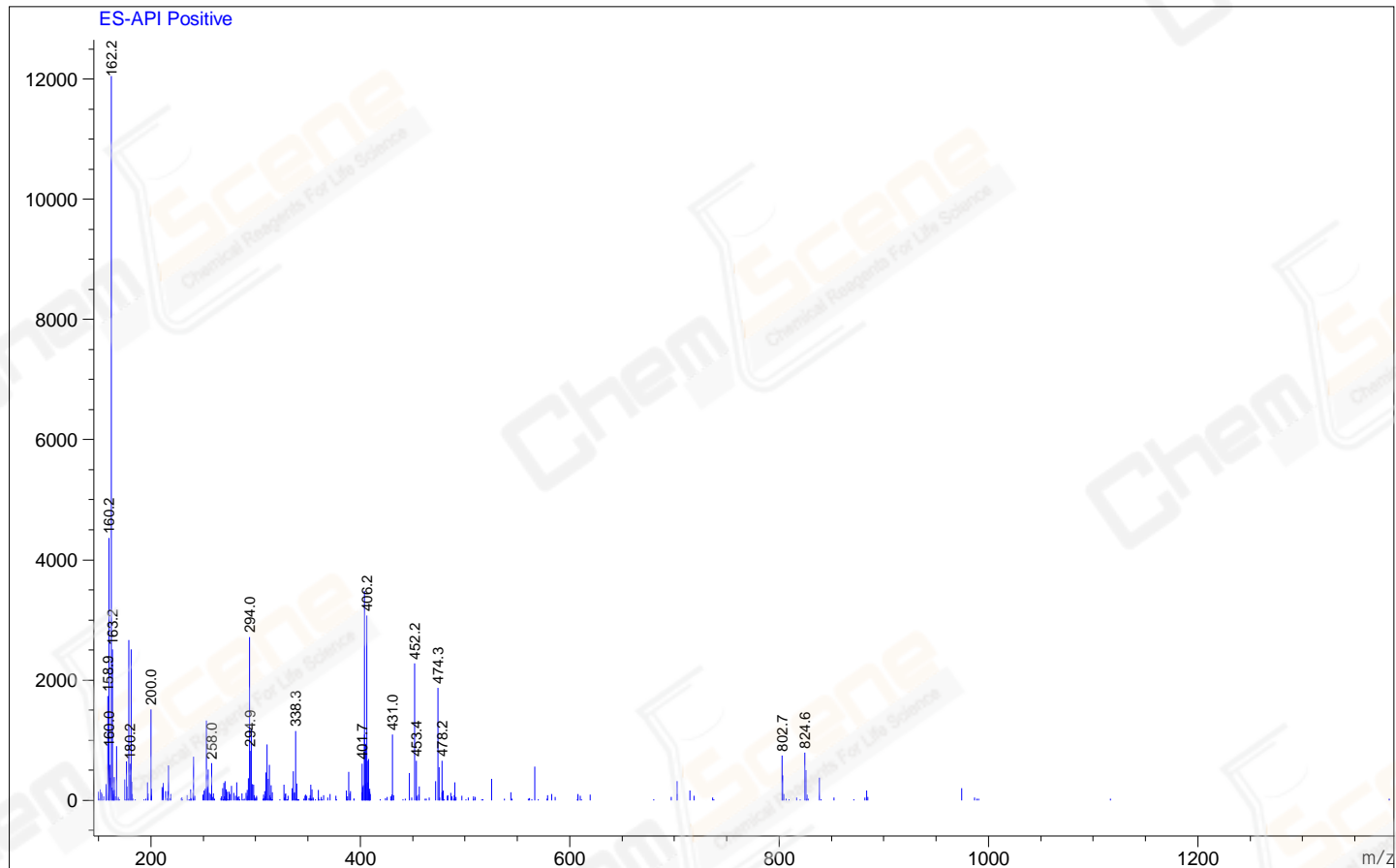
Ret. Time: 2.00



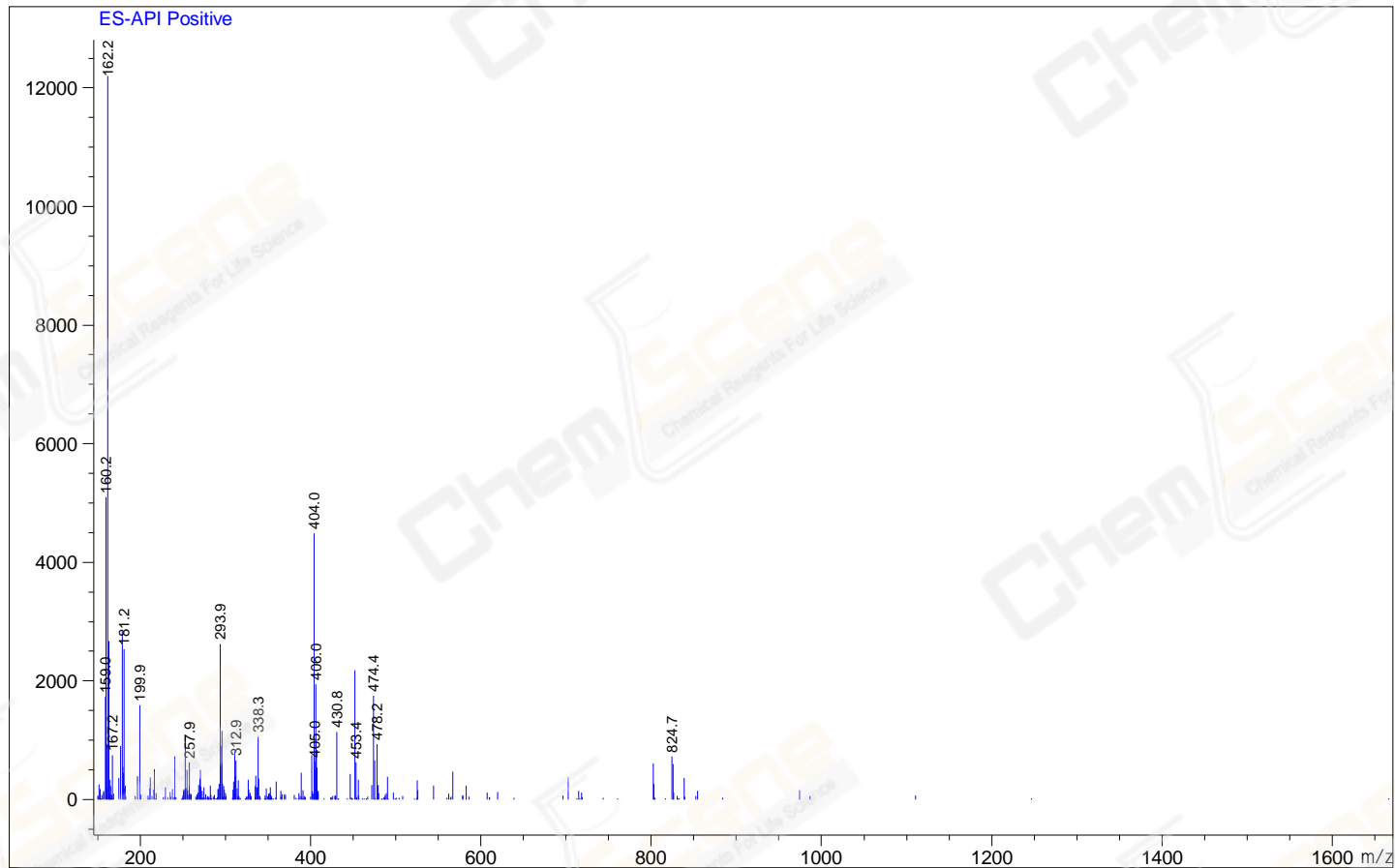
Ret. Time: 6.90



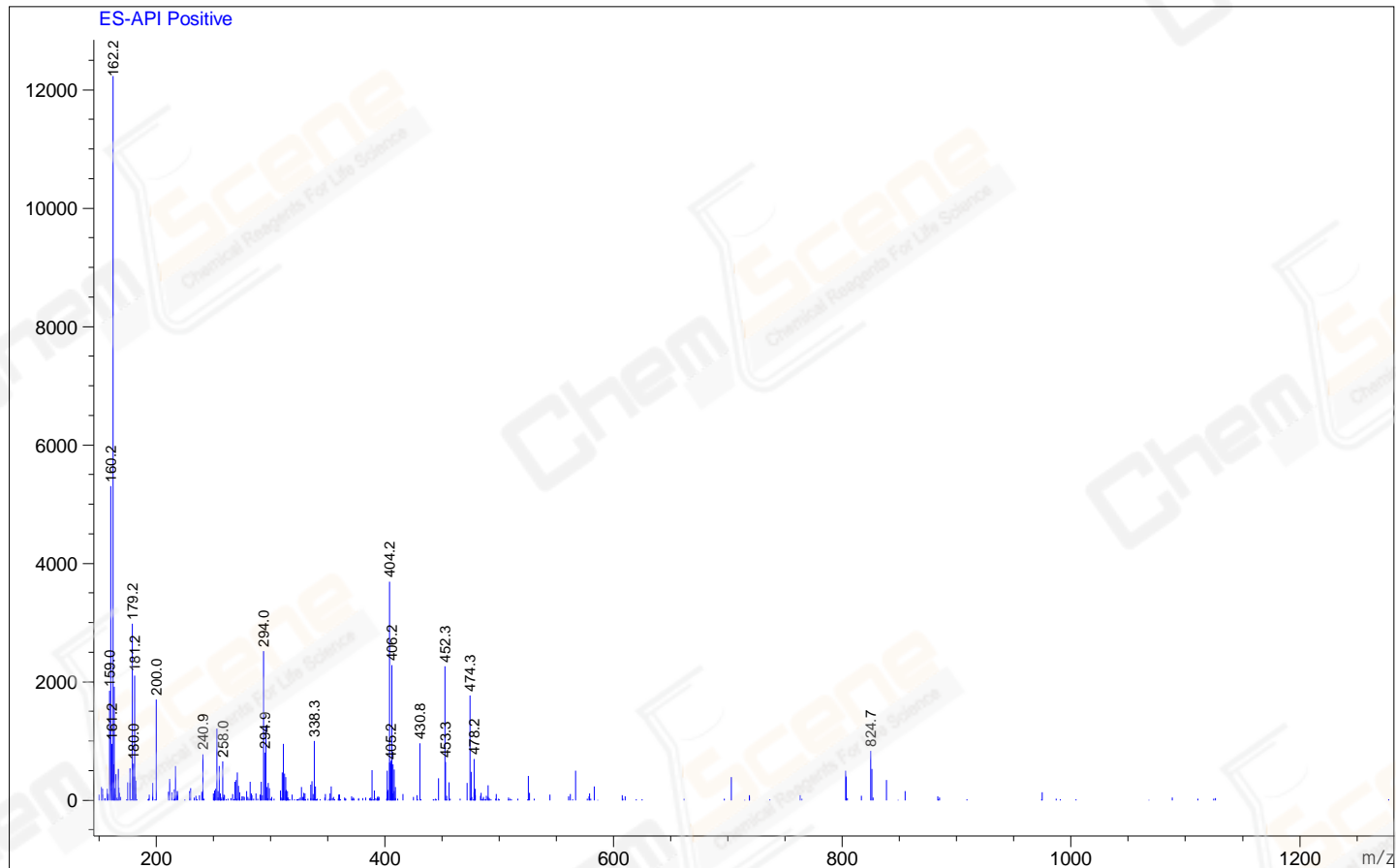
Ret. Time: 7.13



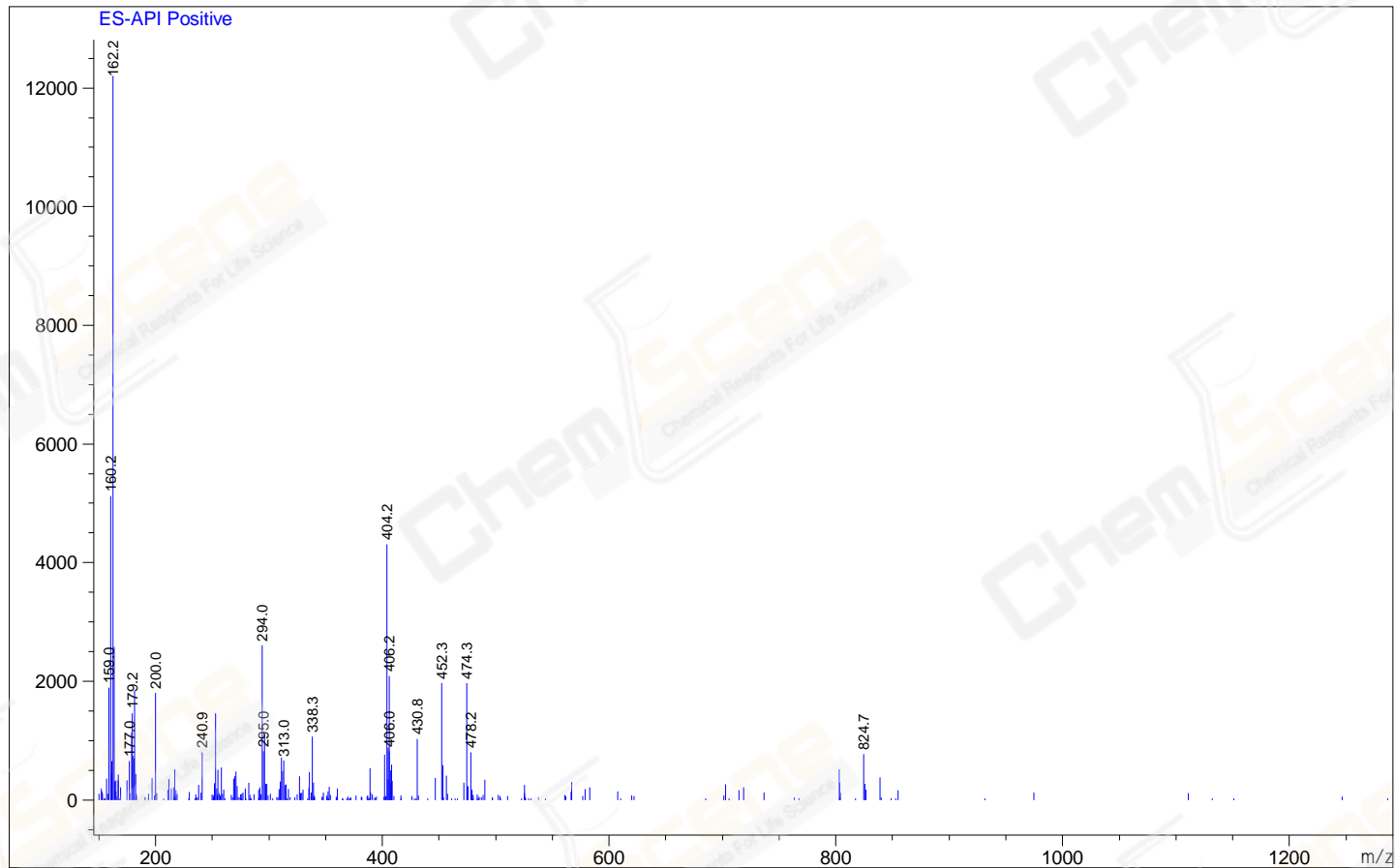
Ret. Time: 7.43



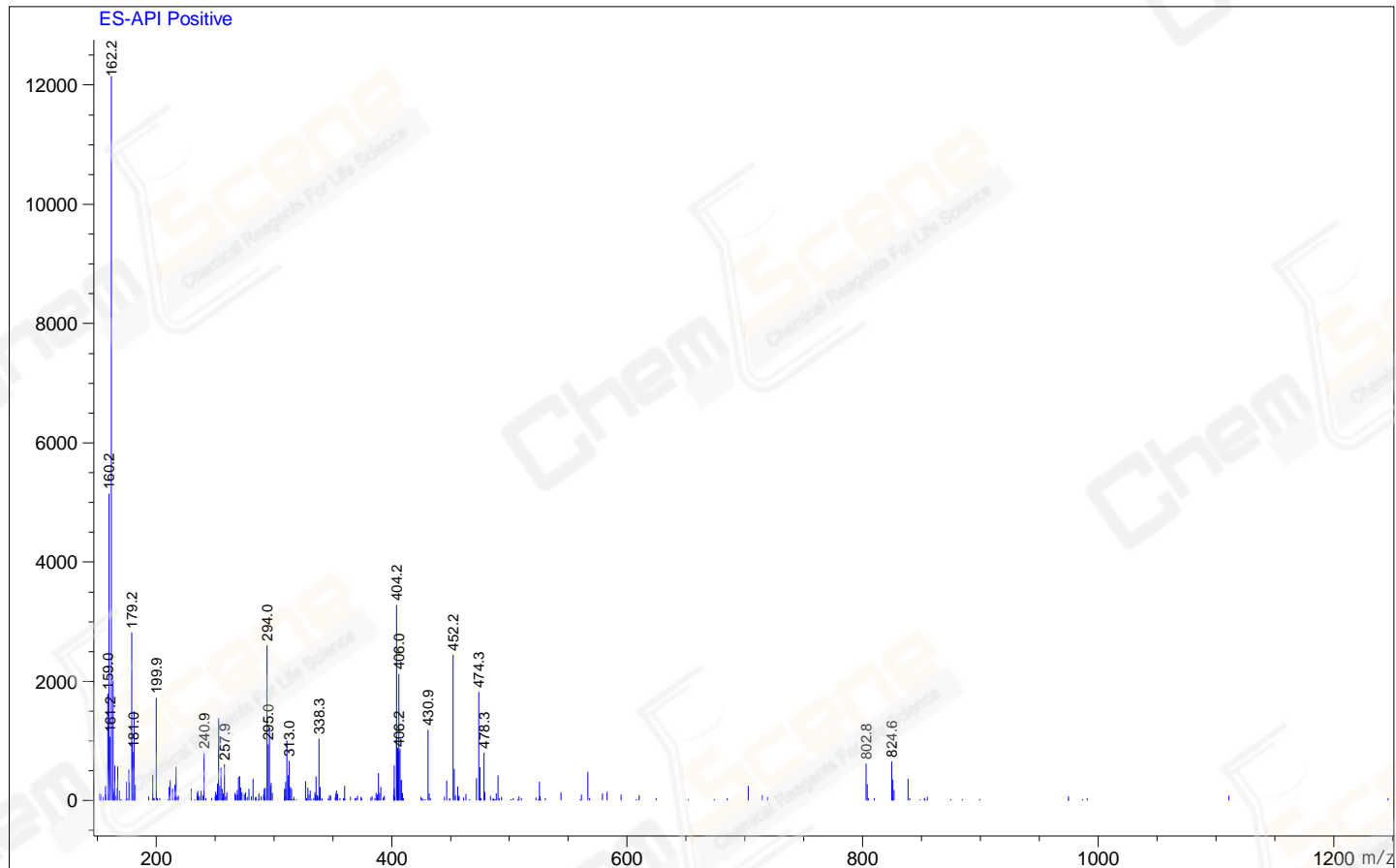
Ret. Time: 7.62



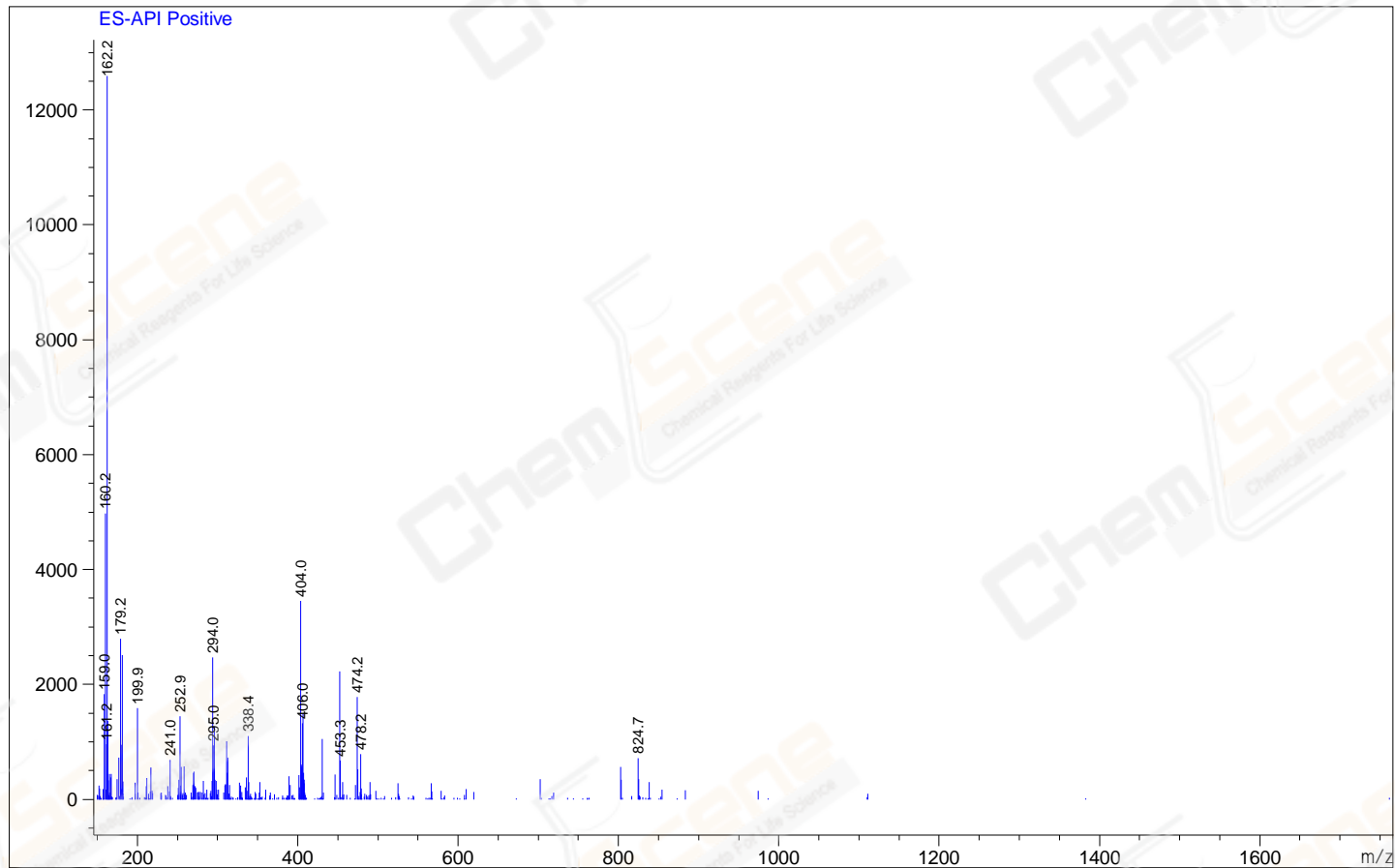
Ret. Time: 7.87



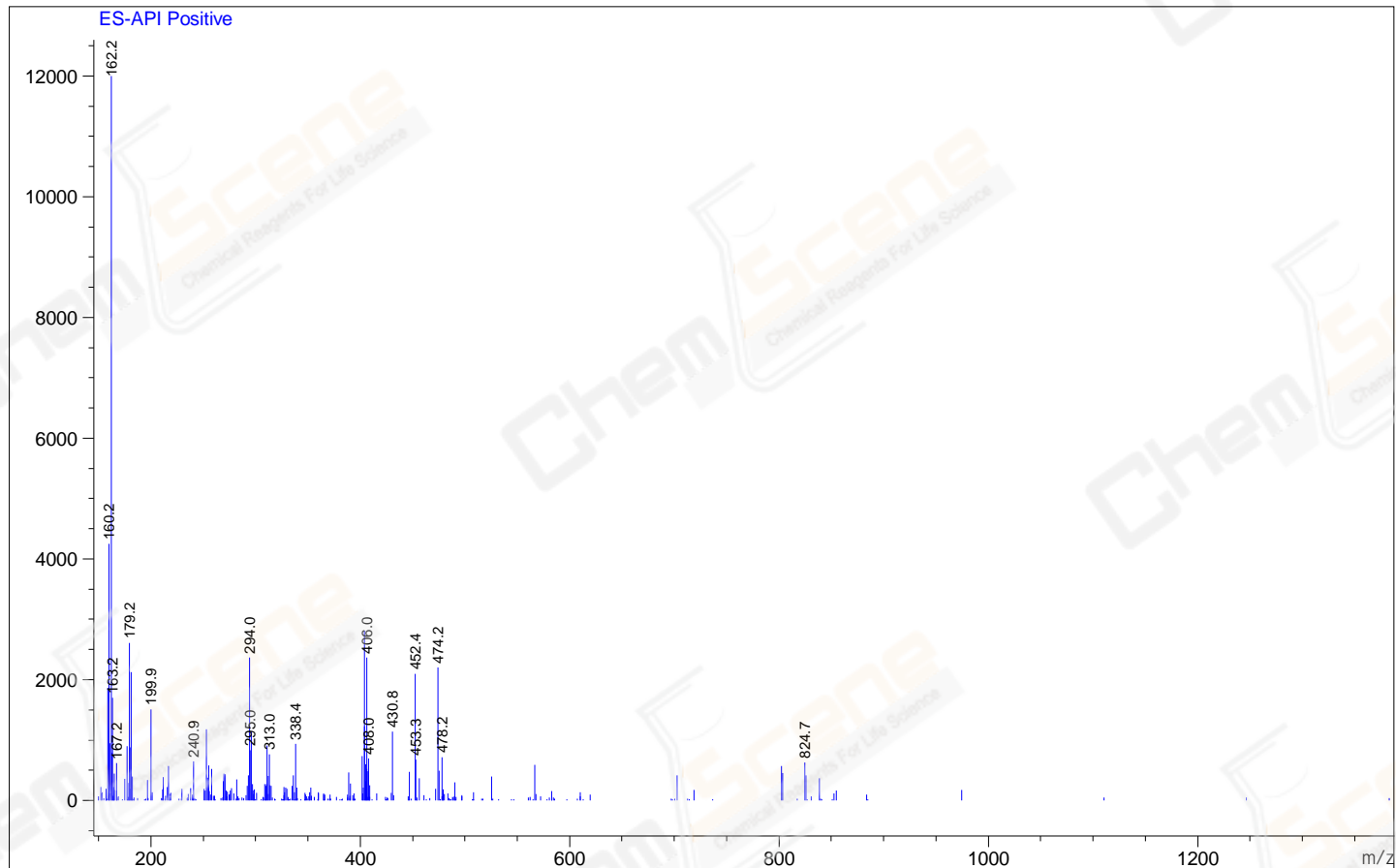
Ret. Time: 7.95



Ret. Time: 8.18



Ret. Time: 8.37



*** End of Report ***