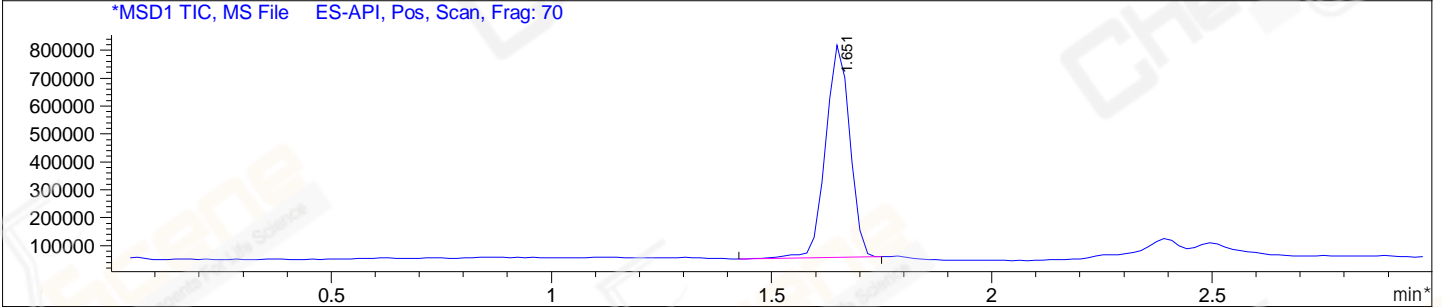
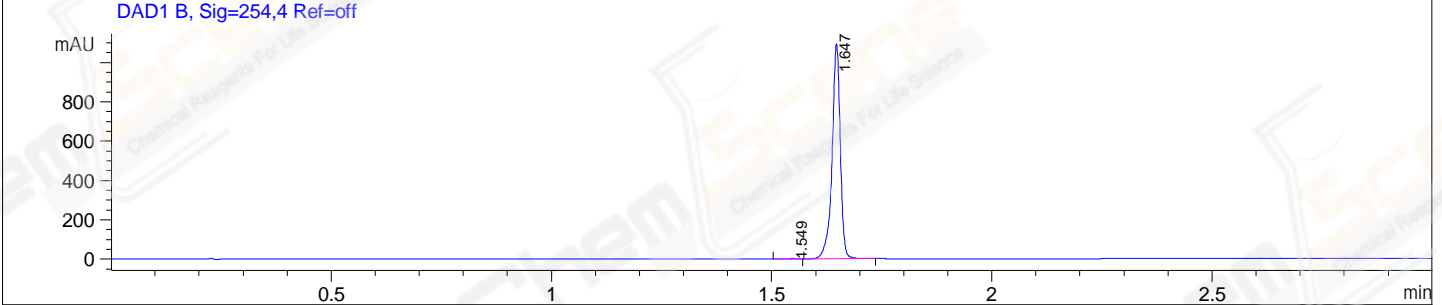
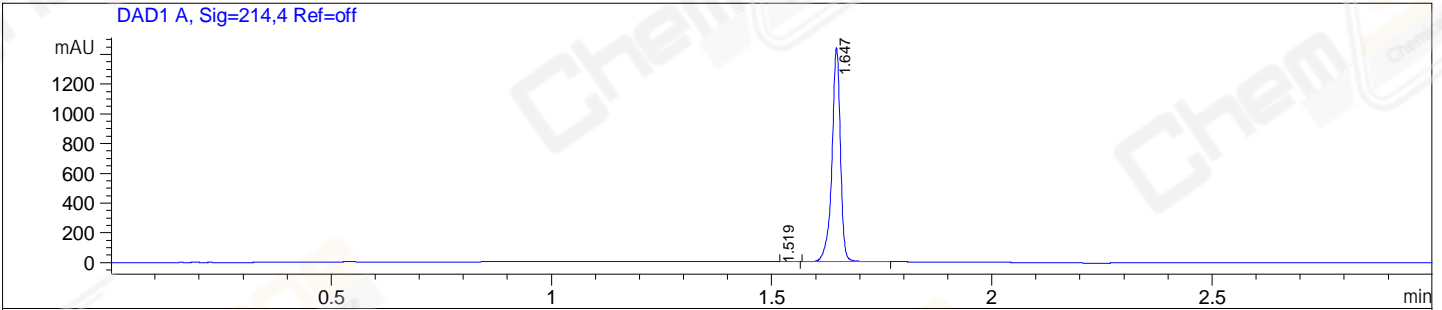


File E:\ChemStation\1\DATA\2024\2024-03\2024-03-13\BIZ2024-313-WLQ18-UPLC-MS-10-028825.D
 Injection Date : 13-Mar-24, 18:03:03 Tgt Mass(EZX) :
 Sample Name : BIZ2024-313-WLQ18 Location : P1-B-02
 Acq. Operator : LY_2278 Inj : 1
 Spec. Reported : MS Integration Inj Volume : 0.8 ul
 Acq. Method : E:\ChemStation\1\Methods\1-POS-UPLC3.0MIN(1.2)(150-1000).M
 Analysis Method : E:\CHEMSTATION\1\METHODS\1-POS-UPLC3.0MIN(1.2)(150-1000).M
 CAS NO. : 327613-57-0 WalkUp method: '1-POS-3MIN' Project: BIZ2024
 Method Info : Mobile Phase: A: water(0.01%TFA) B:ACN(0.01%TFA)
 Gradient: 5% to 95%B within 2.0 min
 Flow Rate :1.2ml/min
 Column :Shim-pack Scepter C18-120, 3.0*33mm,3um
 Oven Temperature : 45C



Integration Results for DAD1 A, Sig=214,4 Ref=off

RetTim	Width	Area	Height	Area%
1.52	0.02	0.81	-0.02	0.04
1.65	0.02	1931.64	1437.17	99.96

Integration Results for DAD1 B, Sig=254,4 Ref=off

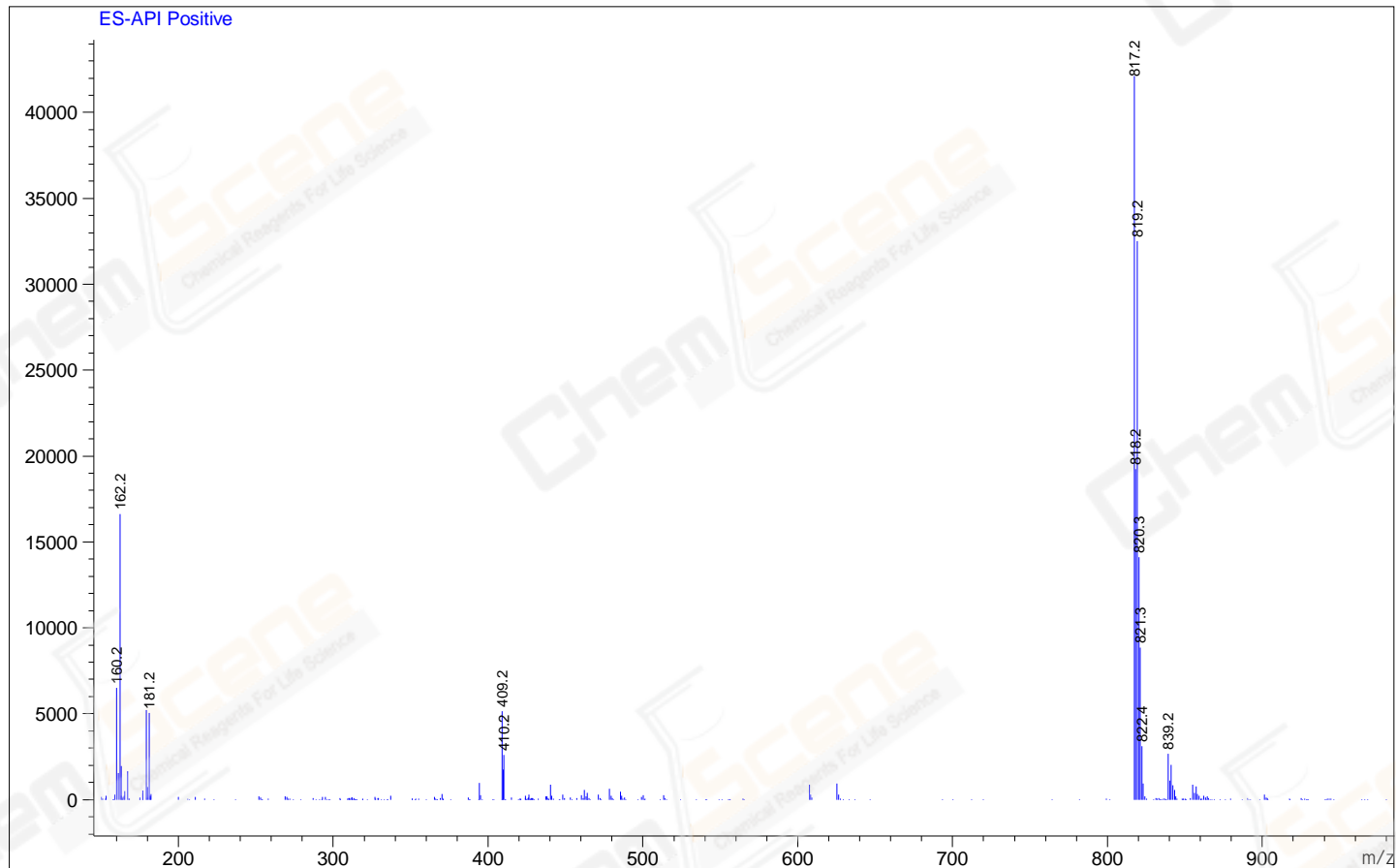
RetTim	Width	Area	Height	Area%
1.55	0.02	1.13	0.95	0.08
1.65	0.02	1423.61	1089.52	99.92

Integration Results for MSD1 TIC, MS File

RetTim	Width	Area	Height	Area%
1.65	0.06	2917564.75	760543.63	100.00

Ret. Time: 1.65

<<<< POSITIVE SPECTRA >>>>



*** End of Report ***