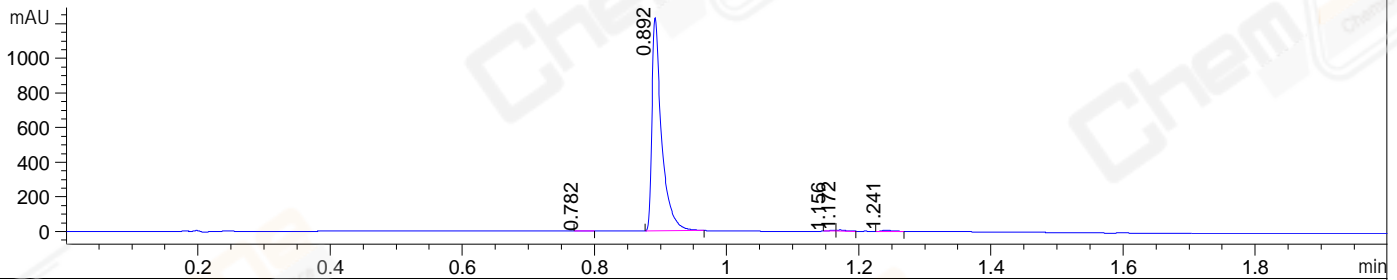
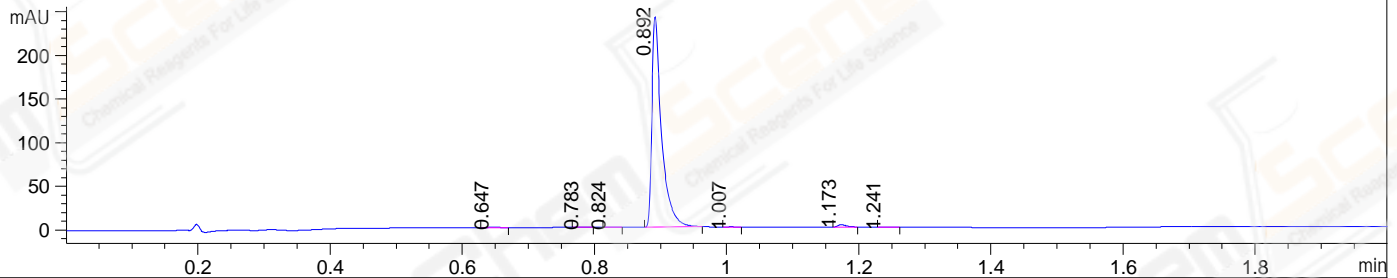


File ..\2022\2022-01-22\CPK2022-119-37066-007835.D Tgt Mass (EZX):  
 Injection Date : 22-Jan-22, 15:20:32 Seq. Line : 0  
 Sample Name : CPK2022-119-37066 Location : P1-E-03  
 Acq. Operator : LY\_2278 Inj : 1  
 Spec. Reported : MS Integration Inj Volume : 0.5 ul  
 Acq. Method : E:\Chem32\1\Methods\1-POS-UPLC2.0MIN(0.8)(150-1000).M  
 Analysis Method : E:\CHEM32\1\METHODS\1-POS-UPLC2.0MIN(0.8)(150-1000).M  
 CAS NO. : 32981-85-4 WalkUp method: '1-POS-2MIN' Target:  
 Method Info : Mobile Phase: A: water(0.01%TFA) B:ACN(0.01%TFA)  
 Gradient: 5% to 95%B within 1.3 min  
 Flow Rate : 0.8ml/min  
 Column :Poroshell 120 EC- C18, 2.1\*50mm,1.9um A-RP-750  
 Oven Temperature : 45C

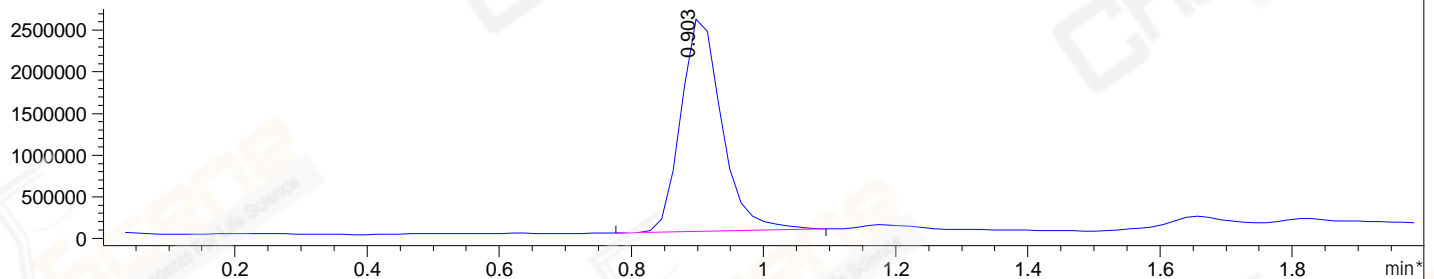
DAD1 A, Sig=214,4 Ref=off



DAD1 B, Sig=254,4 Ref=off



\*MSD1 TIC, MS File ES-API, Pos, Scan, Frag: 70



Integration Results for DAD1 A, Sig=214,4 Ref=off

| RetTim | Width | Area    | Height  | Area% | MS (+) |
|--------|-------|---------|---------|-------|--------|
| 0.78   | 0.02  | 1.68    | 1.77    | 0.13  | 300    |
| 0.89   | 0.02  | 1247.96 | 1235.60 | 98.62 | 300    |
| 1.16   | 0.01  | 3.38    | 4.68    | 0.27  | 300    |
| 1.17   | 0.01  | 6.43    | 7.34    | 0.51  | 300    |
| 1.24   | 0.02  | 5.96    | 6.25    | 0.47  | 300    |

Integration Results for DAD1 B, Sig=254,4 Ref=off

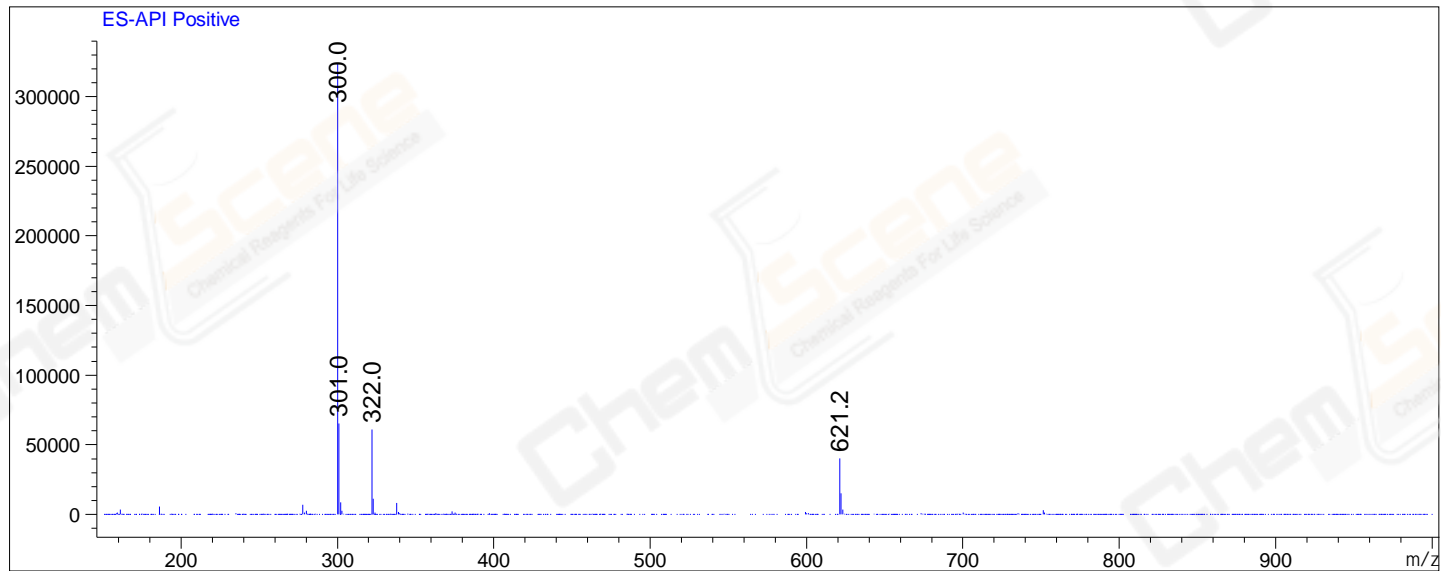
| RetTim | Width | Area   | Height | Area% | MS (+) |
|--------|-------|--------|--------|-------|--------|
| 0.65   | 0.02  | 0.46   | 0.40   | 0.18  | 278    |
| 0.78   | 0.01  | 0.26   | 0.30   | 0.10  | 300    |
| 0.82   | 0.01  | 0.37   | 0.42   | 0.15  | 300    |
| 0.89   | 0.02  | 244.04 | 242.51 | 98.29 | 300    |
| 1.01   | 0.01  | 0.32   | 0.37   | 0.13  | 300    |
| 1.17   | 0.01  | 2.54   | 2.90   | 1.02  | 300    |
| 1.24   | 0.02  | 0.30   | 0.29   | 0.12  | 300    |

Integration Results for MSD1 TIC, MS File



Ret. Time: 0.90

<<<< POSITIVE SPECTRA >>>>



\*\*\* End of Report \*\*\*