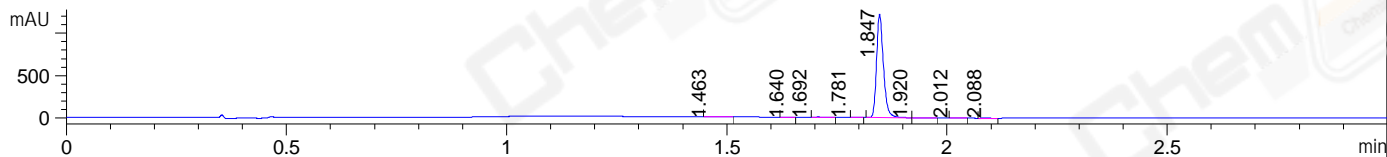
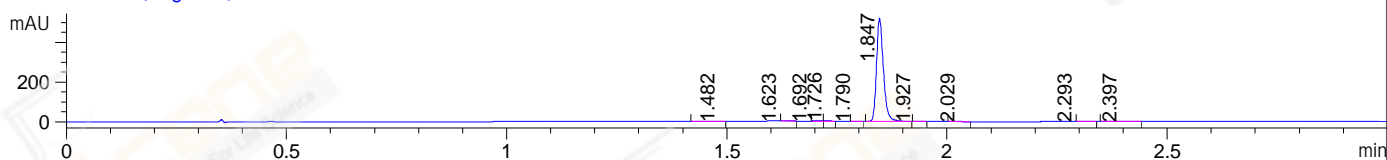


File ..ta\20171215\20171215-2 1\LJ2017-1214-0085.D Tgt Mass (CHM):  
 Injection Date : 15 Dec 17 8:28 pm +0800 Seq. Line : 35  
 Sample Name : LJ2017-1214-0085 Location : P1-F-06  
 Acq. Operator : ZLJ\_587 Inj : 1  
 Spec. Reported : MS Integration Inj Volume : 1 ul  
 Acq. Method : D:\LCMS03\Data\20171215\20171215-2 1\1-POS-3MIN.M  
 Analysis Method : D:\LCMS03\Data\20171215\20171215-2 1\1-POS-3MIN.M  
 Catalog No : CS-W008527 Batch#37176  
 Method Info : Mobile Phase: A: water(0.01%TFA) B:ACN(0.01%TFA)  
 Gradient: 5% to 95%B within 1.3 min  
 Flow Rate :1.8ml/min  
 Column :SunFire C18, 4.6\*50mm,3.5um A-RP-186  
 Oven Temperature : 45C

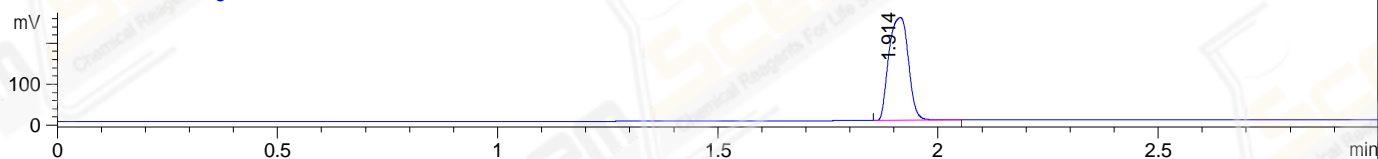
DAD1 A, Sig=214,4 Ref=off



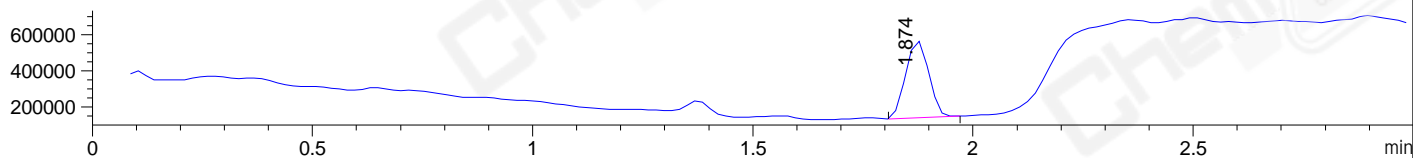
DAD1 B, Sig=254,4 Ref=off



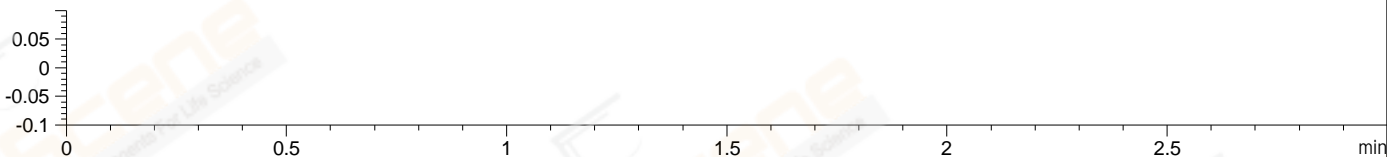
ELS1 A, ELSD Signal



MSD1 TIC, MS File ES-API, Pos, Scan, Frag: 70



Ion 1, MSD1 1, Target Mass 0 +H Positive, EIC=0.7:1.7



Integration Results for DAD1 A, Sig=214,4 Ref=off

RetTim	Width	Area	Height	Area%	MS (+)
1.46	0.02	3.23	2.10	0.24	157
1.64	0.02	1.13	0.92	0.08	130
1.69	0.03	5.16	0.12	0.38	130
1.78	0.02	0.87	0.47	0.06	130
1.85	0.02	1332.03	1221.95	99.10	435
1.92	0.02	1.23	1.00	0.09	130
2.01	0.02	0.35	0.29	0.03	130
2.09	0.02	0.16	0.11	0.01	105

Integration Results for DAD1 B, Sig=254,4 Ref=off

RetTim	Width	Area	Height	Area%	MS (+)
1.48	0.03	0.37	0.17	0.06	157
1.62	0.02	0.37	0.01	0.06	130
1.69	0.02	1.62	0.06	0.28	130
1.73	0.02	0.93	0.88	0.16	130
1.79	0.01	0.18	0.21	0.03	130
1.85	0.02	563.62	517.41	99.09	435

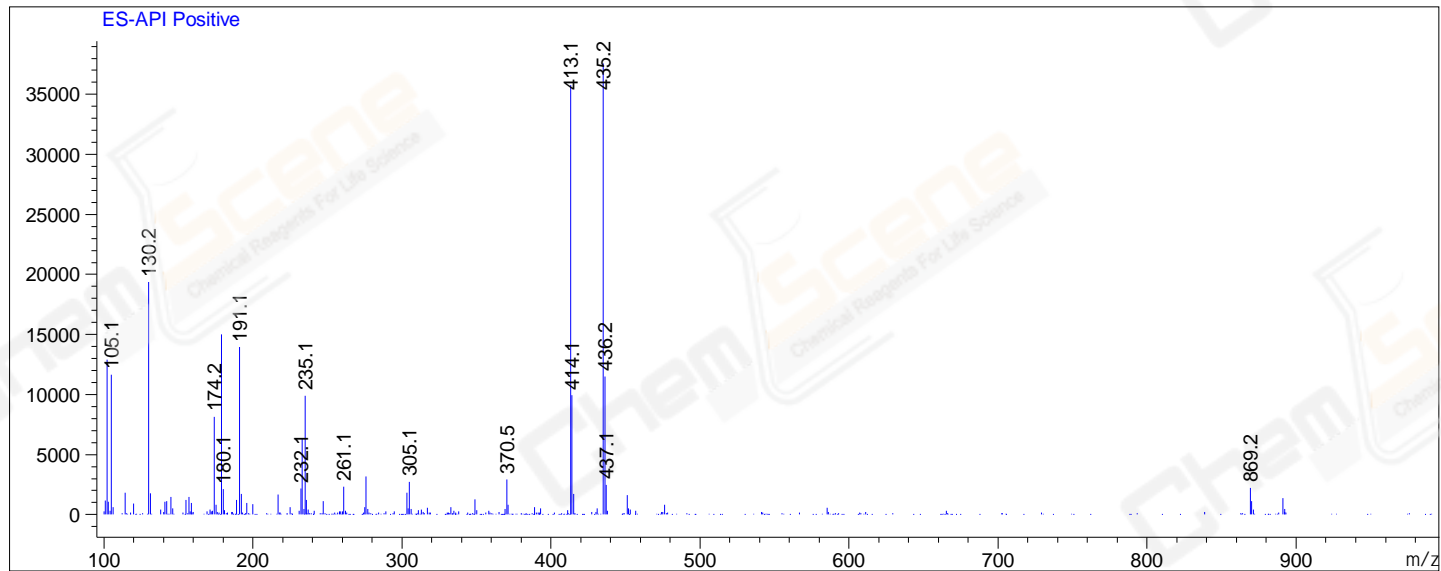
1.93	0.02	0.30	0.26	0.05	130
2.03	0.02	0.56	0.40	0.10	130
2.29	0.02	0.34	-0.02	0.06	105
2.40	0.03	0.51	0.23	0.09	105

## Integration Results for MSD1 TIC, MS File

RetTim	Width	Area	Height	Area%	MS (+)
1.87	0.06	1535403.50	426231.63	100.00	435

Ret. Time: 1.87

&lt;&lt;&lt;&lt; POSITIVE SPECTRA &gt;&gt;&gt;&gt;



\*\*\* End of Report \*\*\*