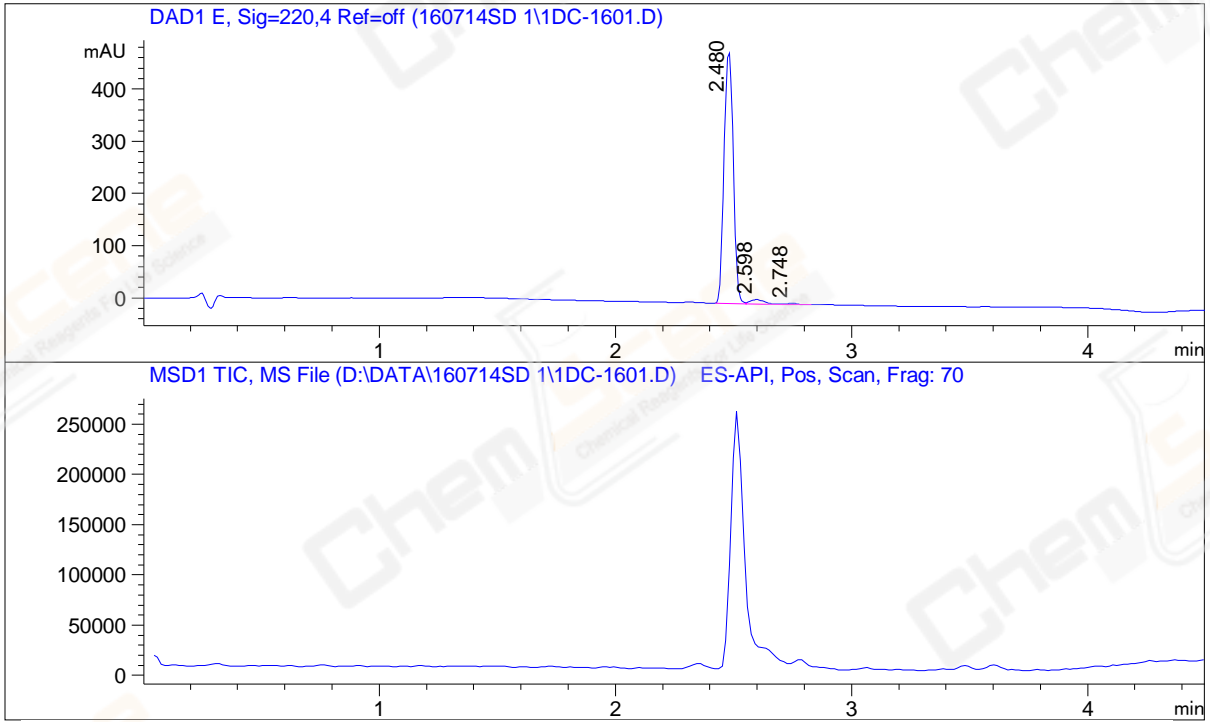


LCMS REPORT

Compound ID : CBR-HVAC-04203
 Sample ID : et9385-41-P1B
 Injection Date : 14. Jul. 2016
 Inj. Vol. : 2.0 ul
 Location : P1-D-03
 Acq Method : D:\DATA\160714SD 1\WUXIAB10.M
 Data Filename : D:\DATA\160714SD 1\1DC-1601.D
 Catalog No : CS-6836 Batch#37256

->



Integration Result

Signal 1 : DAD1 E, Sig=220,4 Ref=off

Peak #	RT [min]	Area	Height	Height %	Width [min]	Area %
1	2.480	1306.523	482.972	97.942	0.044	97.115
2	2.598	32.454	7.897	1.601	0.062	2.412
3	2.748	6.355	2.251	0.456	0.045	0.472

Operator: _____

Date: _____

