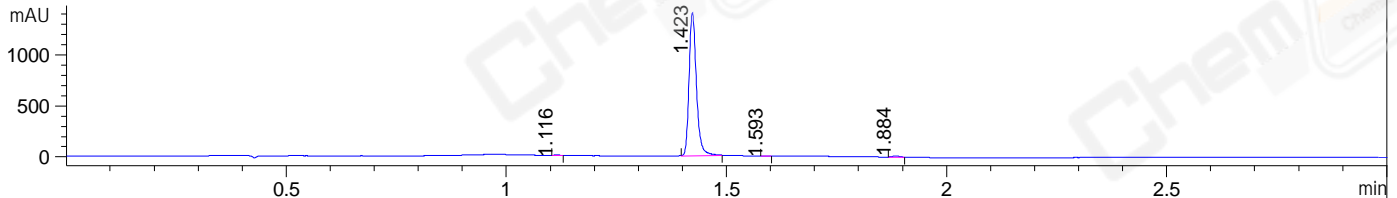
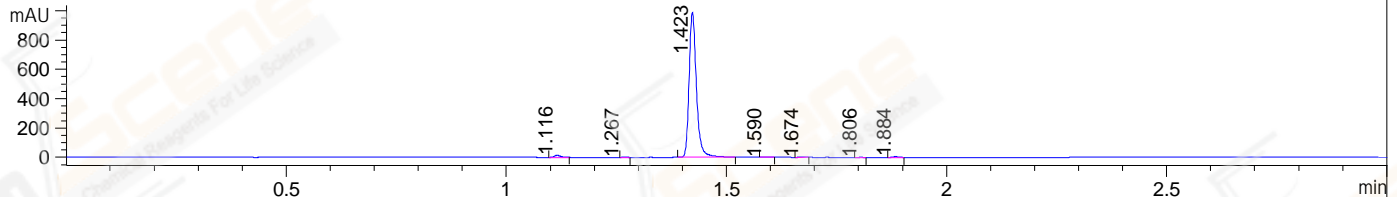


File ..1\DATA\2019\20190131\557\BIZ2019-130-CXL4.D Tgt Mass (CHM):
 Injection Date : 31 Jan 19 11:01 am +0800 Seq. Line : 8
 Sample Name : BIZ2019-130-CXL4 Location : P2-B-07
 Acq. Operator : LQ_1052 Inj : 1
 Spec. Reported : MS Integration Inj Volume : 1 ul
 Acq. Method : D:\Chem32\1\data\2019\20190131\557\1-POS-3MIN-1.M
 Analysis Method : D:\CHEM32\1\DATA\2019\20190131\557\1-POS-3MIN-1.M
 Catalog No : CS-7412 Batch#37652
 Method Info : Mobile Phase: A: water(0.01%TFA) B:ACN(0.01%TFA)
 Gradient: 5% to 95%B within 1.3 min
 Flow Rate :1.8ml/min
 Column :SunFire C18, 4.6*50mm,3.5um A-RP-314
 Oven Temperature : 45□

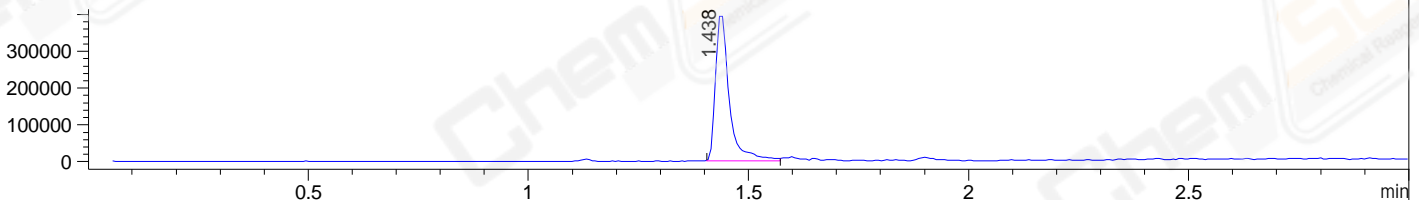
DAD1 B, Sig=214,4 Ref=off



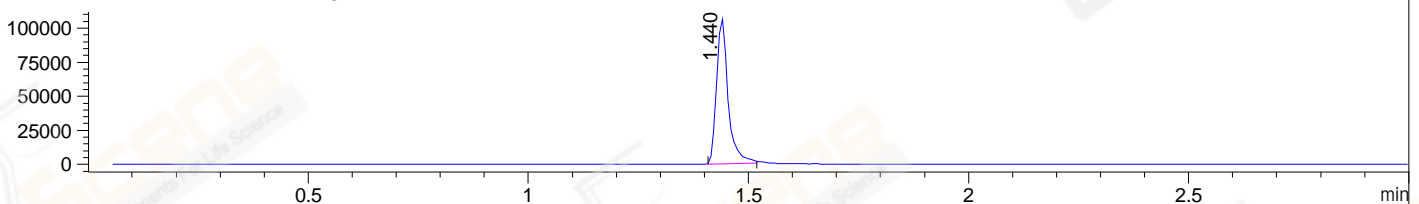
DAD1 C, Sig=254,4 Ref=off



MSD1 TIC, MS File ES-API, Pos, Scan, Frag: 70



Ion 499.2, MSD1 499.2, Target Mass 498.2 +H Positive, EIC=498.9:499.9



Integration Results for DAD1 B, Sig=214,4 Ref=off

RetTim	Width	Area	Height	Area%	MS (+)
1.12	0.01	3.69	4.28	0.22	ND
1.42	0.02	1632.06	1403.93	99.04	250
1.59	0.02	0.98	1.07	0.06	895
1.88	0.02	11.10	10.76	0.67	599

Integration Results for DAD1 C, Sig=254,4 Ref=off

RetTim	Width	Area	Height	Area%	MS (+)
1.12	0.02	13.50	13.23	1.16	ND
1.27	0.02	0.38	0.42	0.03	ND
1.42	0.02	1137.39	989.32	98.14	250
1.59	0.02	1.01	0.85	0.09	ND
1.67	0.01	0.43	0.49	0.04	ND
1.81	0.01	0.65	0.80	0.06	ND
1.88	0.02	5.60	5.51	0.48	599

Integration Results for MSD1 TIC, MS File



RetTim	Width	Area	Height	Area%	MS (+)
--------	-------	------	--------	-------	--------

Ret. Time: 1.44

<<<< POSITIVE SPECTRA >>>>

ES-API Positive

