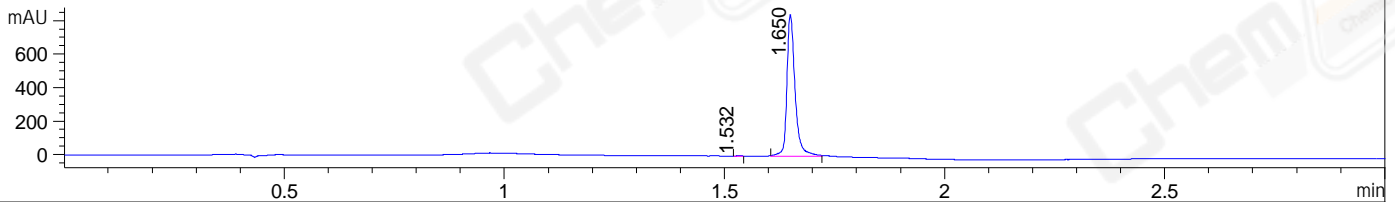
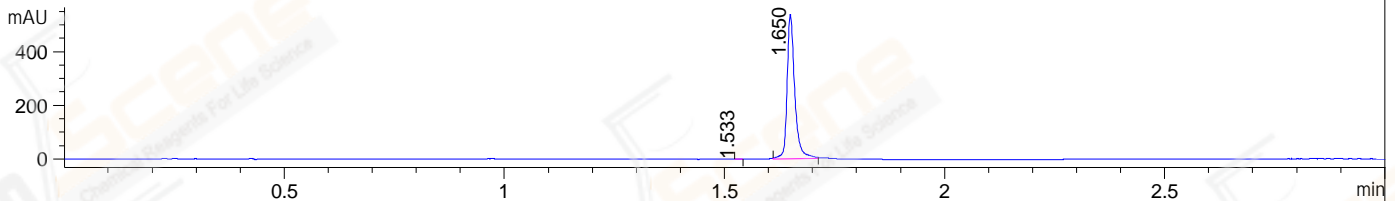


File ..1\DATA\2019\20190220\555\BIZ2019-219-WYQ9.D Tgt Mass (CHM):  
 Injection Date : 20 Feb 19 2:37 pm +0800 Seq. Line : 26  
 Sample Name : BIZ2019-219-WYQ9 Location : P2-F-01  
 Acq. Operator : LQ\_1052 Inj : 1  
 Spec. Reported : MS Integration Inj Volume : 1 ul  
 Acq. Method : D:\Chem32\1\data\2019\20190220\555\1-POS-3MIN-1.M  
 Analysis Method : D:\CHEM32\1\DATA\2019\20190220\555\1-POS-3MIN-1.M  
 CAS NO. : 871038-72-1  
 Method Info : Mobile Phase: A: water(0.01%TFA) B:ACN(0.01%TFA)  
 Gradient: 5% to 95%B within 1.3 min  
 Flow Rate :1.8ml/min  
 Column :SunFire C18, 4.6\*50mm,3.5um A-RP-314  
 Oven Temperature : 45□

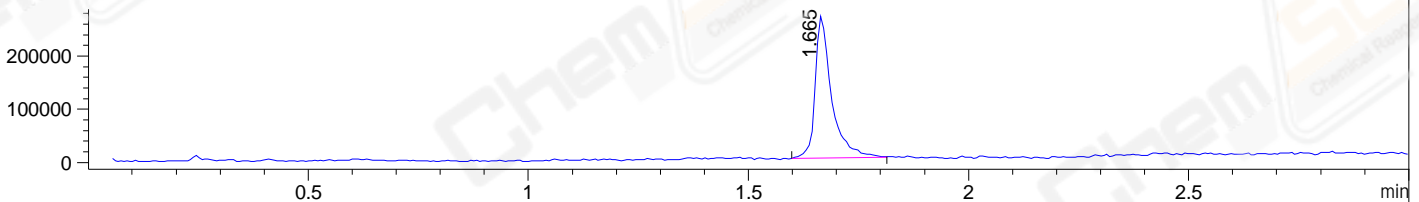
DAD1 B, Sig=214,4 Ref=off



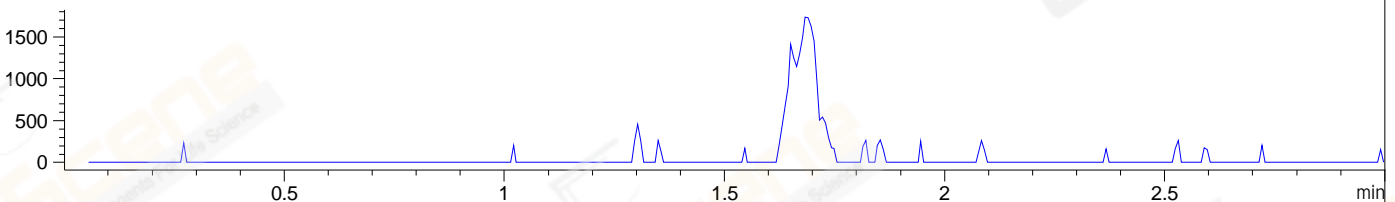
DAD1 C, Sig=254,4 Ref=off



MSD1 TIC, MS File ES-API, Pos, Scan, Frag: 70



Ion 483.1, MSD1 483.1, Target Mass 482.1 +H Positive, EIC=482.8:483.8



Integration Results for DAD1 B, Sig=214,4 Ref=off

RetTim	Width	Area	Height	Area%	MS (+)
1.53	0.01	0.90	1.27	0.08	ND
1.65	0.02	1094.30	847.18	99.92	445

Integration Results for DAD1 C, Sig=254,4 Ref=off

RetTim	Width	Area	Height	Area%	MS (+)
1.53	0.01	0.59	0.76	0.09	ND
1.65	0.02	648.14	538.53	99.91	445

Integration Results for MSD1 TIC, MS File

RetTim	Width	Area	Height	Area%	MS (+)
1.67	0.04	693185.88	268000.88	100.00	445

Ret. Time: 1.67

<<<< POSITIVE SPECTRA >>>>

ES-API Positive

