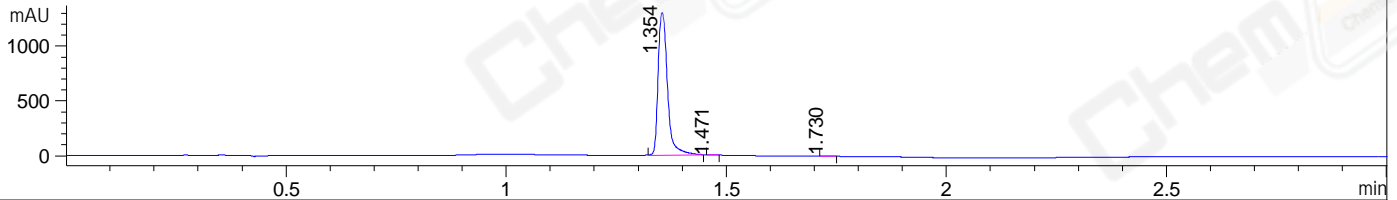
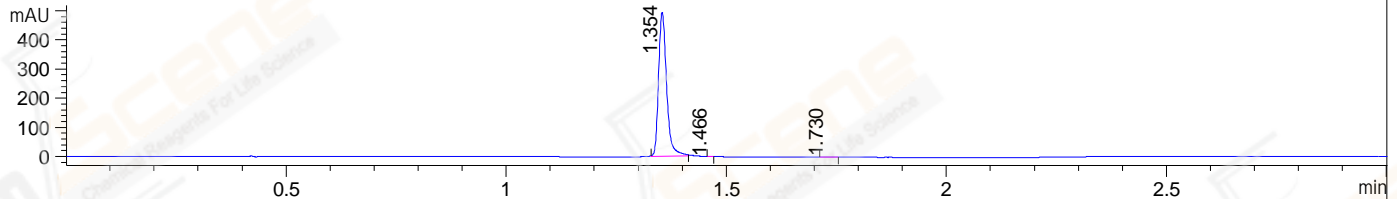


File ..\DATA\2019\20190328\559\CPK2019-327-38718.D Tgt Mass (CHM):
Injection Date : 28 Mar 19 10:04 am +0800 Seq. Line : 9
Sample Name : CPK2019-327-38718 Location : P2-D-06
Acq. Operator : LQ_1052 Inj : 1
Spec. Reported : MS Integration Inj Volume : 1 ul
Acq. Method : D:\Chem32\1\data\2019\20190328\559\1-POS-3MIN-1.M
Analysis Method : D:\CHEM32\1\DATA\2019\20190328\559\1-POS-3MIN-1.M
Catalog No : CS-0033435 Batch#38718
Method Info : Mobile Phase: A: water(0.01%TFA) B:ACN(0.01%TFA)
Gradient: 5% to 95%B within 1.3 min
Flow Rate :1.8ml/min
Column :SunFire C18, 4.6*50mm,3.5um A-RP-314
Oven Temperature : 45□

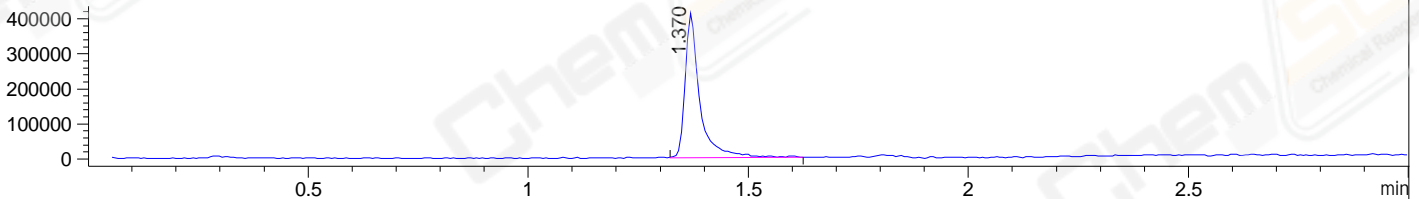
DAD1 B, Sig=214,4 Ref=off



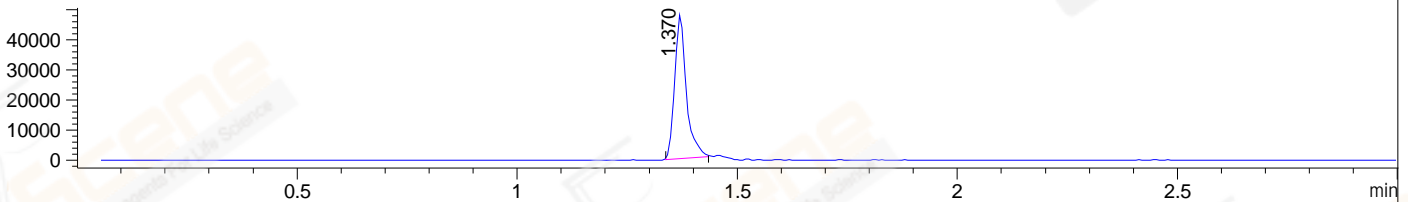
DAD1 C, Sig=254,4 Ref=off



MSD1 TIC, MS File ES-API, Pos, Scan, Frag: 70



Ion 433.9, MSD1 433.9, Target Mass 432.9 +H Positive, EIC=433.6:434.6



Integration Results for DAD1 B, Sig=214,4 Ref=off

RetTim	Width	Area	Height	Area%	MS(+)
1.35	0.02	1920.70	1300.94	99.67	433
1.47	0.02	3.38	3.20	0.18	433
1.73	0.02	2.94	2.36	0.15	ND

Integration Results for DAD1 C, Sig=254,4 Ref=off

RetTim	Width	Area	Height	Area%	MS(+)
1.35	0.02	630.27	494.71	99.74	433
1.47	0.01	0.17	0.26	0.03	433
1.73	0.02	1.48	1.18	0.23	ND

Integration Results for MSD1 TIC, MS File

RetTim	Width	Area	Height	Area%	MS(+)
1.37	0.03	962771.13	413689.41	100.00	433

Ret. Time: 1.37

<<<< POSITIVE SPECTRA >>>>

ES-API Positive

