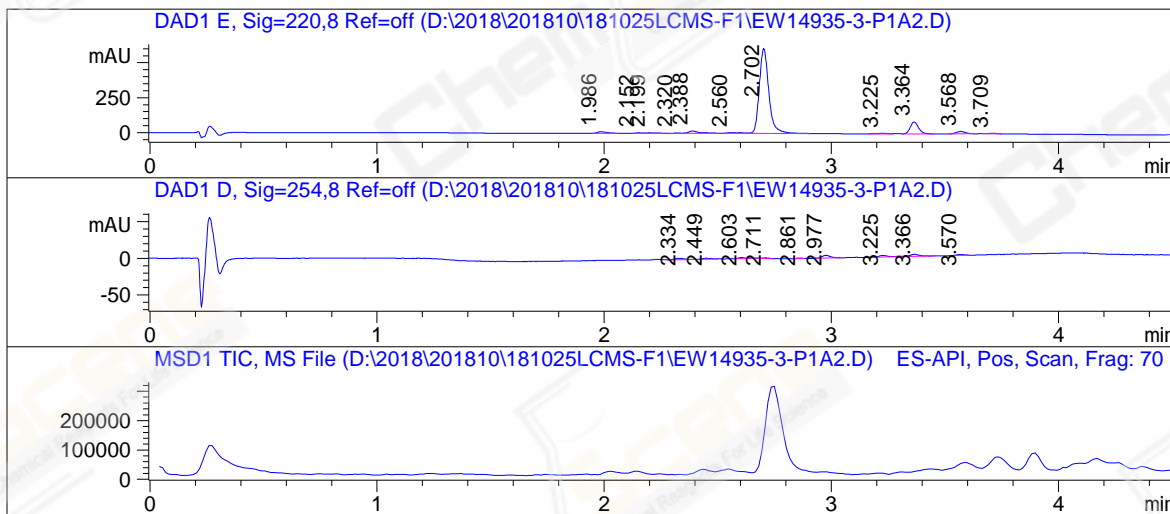


LCMS REPORT

Compound ID : 878143-03-4
 Catalog No : CS-7184 Batch# 38743
 Injection Date : Thu, 25. Oct. 2018
 Location : P2-A-04
 Inj. Vol. : 5.0 uL
 Acq Method : D:\METHODS\WUXIAB10.M
 Data Filename : D:\2018\201810\181025LCMS-F1\EW14935-3-P1A2.D
 Instrument : CAS-WH-LCMS-F

->



Report

Signal 1 : DAD1 E, Sig=220,8 Ref=off

#	Meas. Ret.	Height	Width	Area	Area %
1	1.986	11.363	0.045	30.9078	1.433
2	2.152	2.965	0.026	4.5386	0.210
3	2.199	2.933	0.054	9.5433	0.443
4	2.320	2.311	0.035	4.8918	0.227
5	2.388	15.622	0.054	50.2357	2.330
6	2.560	4.442	0.068	18.0612	0.838
7	2.702	606.940	0.048	1757.0963	81.485
8	3.225	4.860	0.047	13.6244	0.632
9	3.364	85.135	0.042	213.0988	9.882
10	3.568	16.642	0.046	46.0757	2.137
11	3.709	3.033	0.045	8.2728	0.384

Signal 2 : DAD1 D, Sig=254,8 Ref=off

#	Meas. Ret.	Height	Width	Area	Area %
1	2.334	1.914	0.049	6.2899	14.381
2	2.449	1.333	0.050	4.0214	9.195
3	2.603	1.347	0.034	2.7660	6.324
4	2.711	0.852	0.030	1.5325	3.504
5	2.861	0.456	0.032	0.8679	1.984
6	2.977	3.686	0.040	9.7700	22.338
7	3.225	2.132	0.052	7.7791	17.786
8	3.366	2.746	0.042	7.5550	17.274
9	3.570	1.268	0.041	3.1548	7.213

Operator: _____
 Date: _____

