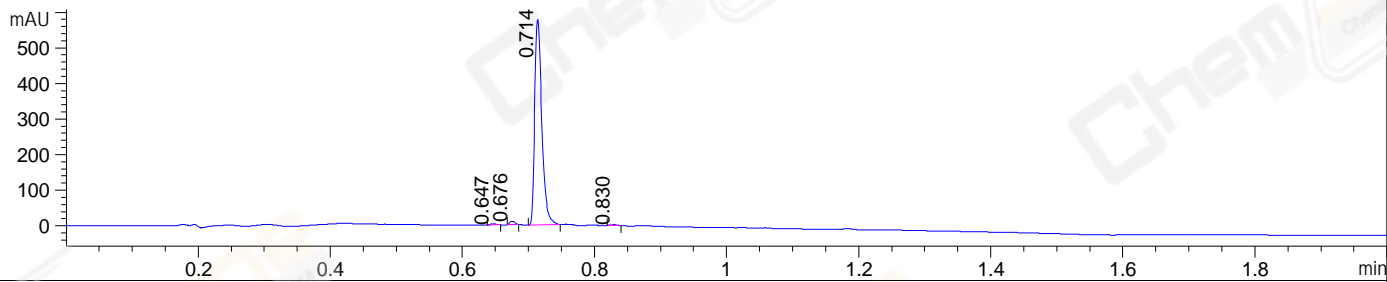
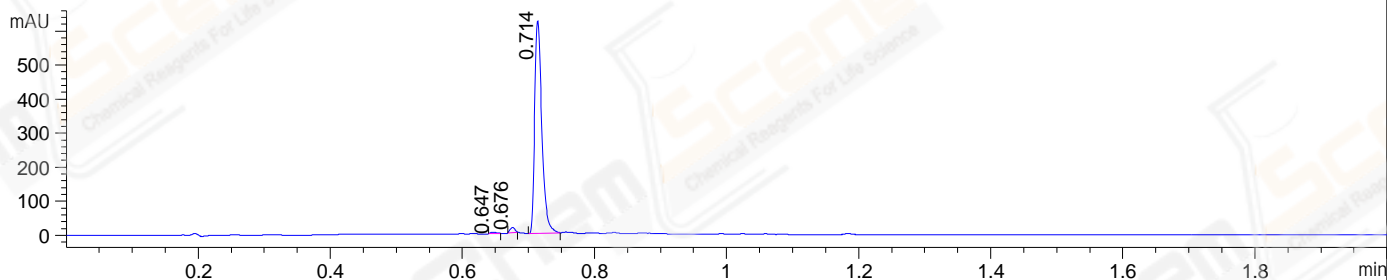


File ..MS-03\2021-10-08\CPK2021-008-39111-007147.D Tgt Mass (EZX):  
 Injection Date : 08-Oct-21, 19:47:07 Seq. Line : 0  
 Sample Name : CPK2021-008-39111 Location : P1-E-03  
 Acq. Operator : LiYong Inj : 1  
 Spec. Reported : MS Integration Inj Volume : 0.5 ul  
 Acq. Method : E:\Chem32\1-Methods\1-POS-UPLC2.0MIN(0.8)(150-1000).M  
 Analysis Method : E:\CHEM32\1\METHODS\1-POS-UPLC2.0MIN(0.8)-(0-2000).M  
 CAS NO. : 952021-60-2 WalkUp method: '1-POS-2MIN' Target:  
 Method Info : Mobile Phase: A: water(0.01%TFA) B:ACN(0.01%TFA)  
 Gradient: 5% to 95%B within 1.3 min  
 Flow Rate : 0.8ml/min  
 Column :Poroshell 120 EC- C18, 2.1\*50mm,1.9um A-RP-863  
 Oven Temperature : 45C

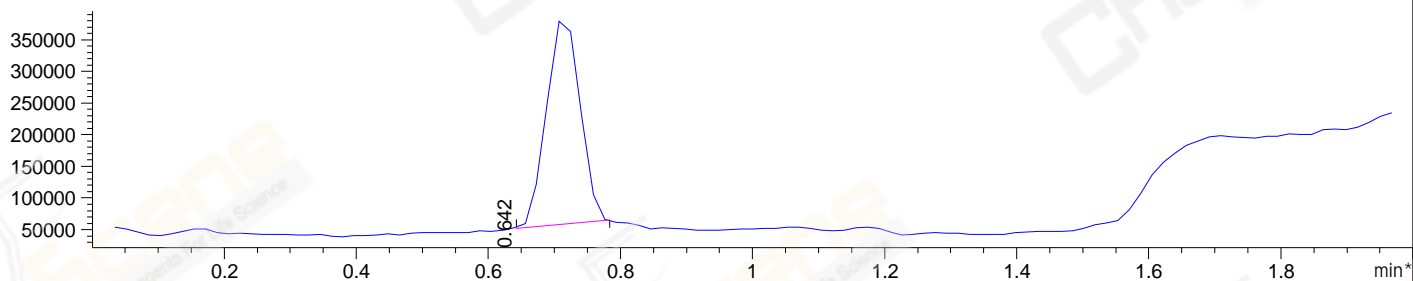
DAD1 A, Sig=214,4 Ref=off



DAD1 B, Sig=254,4 Ref=off



\*MSD1 TIC, MS File ES-API, Pos, Scan, Frag: 70



Integration Results for DAD1 A, Sig=214,4 Ref=off

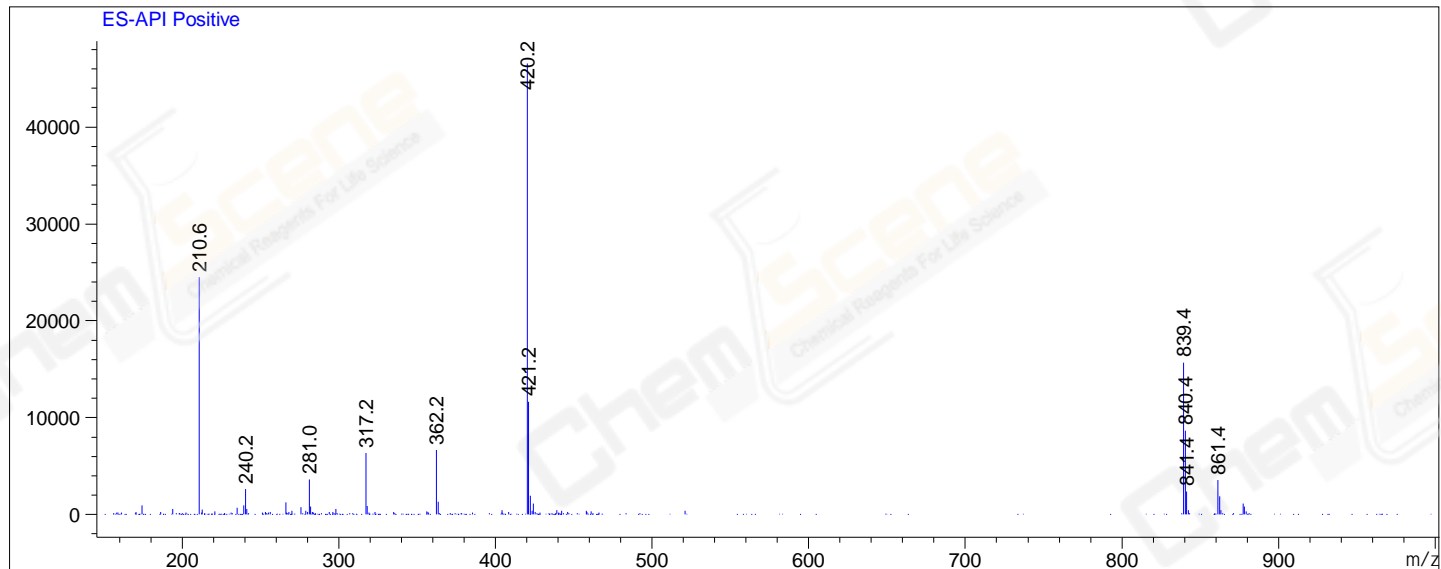
RetTim	Width	Area	Height	Area%	MS (+)
0.65	0.01	2.43	4.13	0.55	362
0.68	0.01	5.17	9.94	1.17	420
0.71	0.01	433.81	581.50	98.00	420
0.83	0.01	1.24	2.06	0.28	317

Integration Results for DAD1 B, Sig=254,4 Ref=off

RetTim	Width	Area	Height	Area%	MS (+)
0.65	0.01	2.28	4.11	0.47	362
0.68	0.01	7.16	14.87	1.49	362
0.71	0.01	469.60	628.93	98.03	420

Ret. Time: 0.64

<<<< POSITIVE SPECTRA >>>>



\*\*\* End of Report \*\*\*