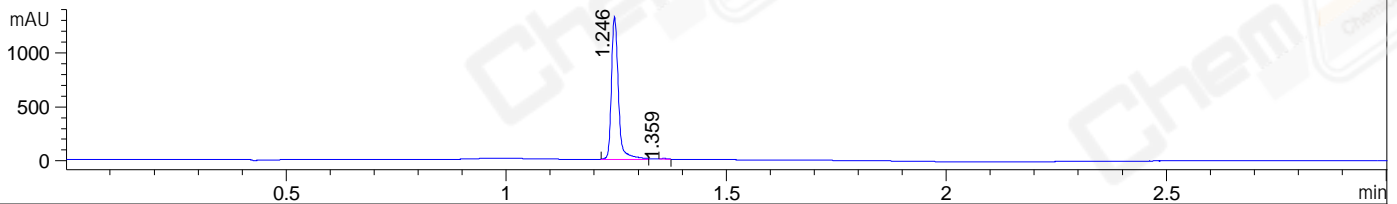
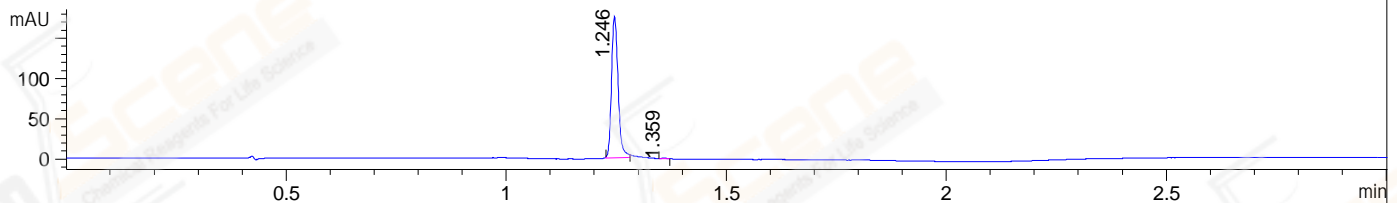


File ..1\DATA\2019\20190319\558\BIZ2019-318-WYQ6.D Tgt Mass (CHM):
 Injection Date : 19 Mar 19 1:30 pm +0800 Seq. Line : 52
 Sample Name : BIZ2019-318-WYQ6 Location : P2-D-08
 Acq. Operator : LQ_1052 Inj : 1
 Spec. Reported : MS Integration Inj Volume : 1 ul
 Acq. Method : D:\Chem32\1\data\2019\20190319\558\1-POS-3MIN-1.M
 Analysis Method : D:\CHEM32\1\DATA\2019\20190319\558\1-POS-3MIN-1.M
 Catalog No : CS-6150 Batch#39149
 Method Info : Mobile Phase: A: water(0.01%TFA) B:ACN(0.01%TFA)
 Gradient: 5% to 95%B within 1.3 min
 Flow Rate :1.8ml/min
 Column :SunFire C18, 4.6*50mm,3.5um A-RP-314
 Oven Temperature : 45□

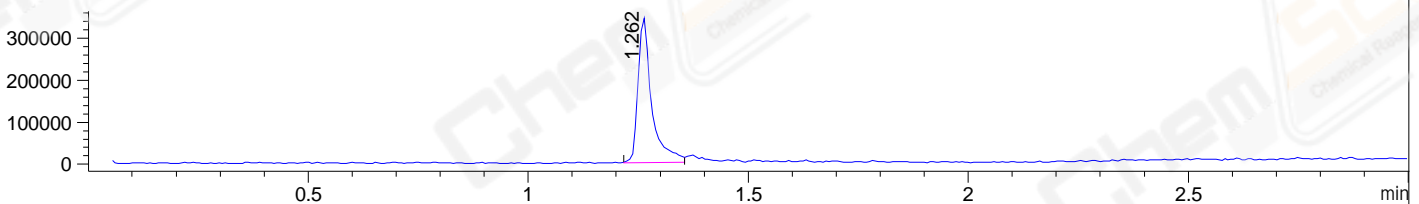
DAD1 B, Sig=214,4 Ref=off



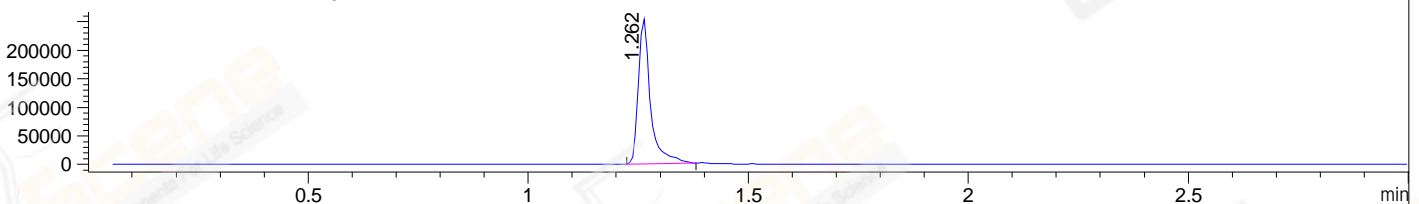
DAD1 C, Sig=254,4 Ref=off



MSD1 TIC, MS File ES-API, Pos, Scan, Frag: 70



Ion 381.1, MSD1 381.1, Target Mass 380.1 +H Positive, EIC=380.8:381.8



Integration Results for DAD1 B, Sig=214,4 Ref=off

RetTim	Width	Area	Height	Area%	MS (+)
1.25	0.02	1459.50	1323.90	99.66	381
1.36	0.01	5.00	5.76	0.34	381

Integration Results for DAD1 C, Sig=254,4 Ref=off

RetTim	Width	Area	Height	Area%	MS (+)
1.25	0.02	182.58	175.79	99.65	381
1.36	0.02	0.64	0.70	0.35	381

Integration Results for MSD1 TIC, MS File

RetTim	Width	Area	Height	Area%	MS (+)
1.26	0.03	740461.00	346046.63	100.00	381

Ret. Time: 1.26

<<<< POSITIVE SPECTRA >>>>

ES-API Positive

